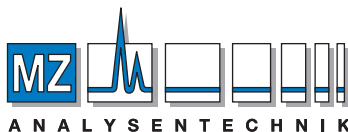
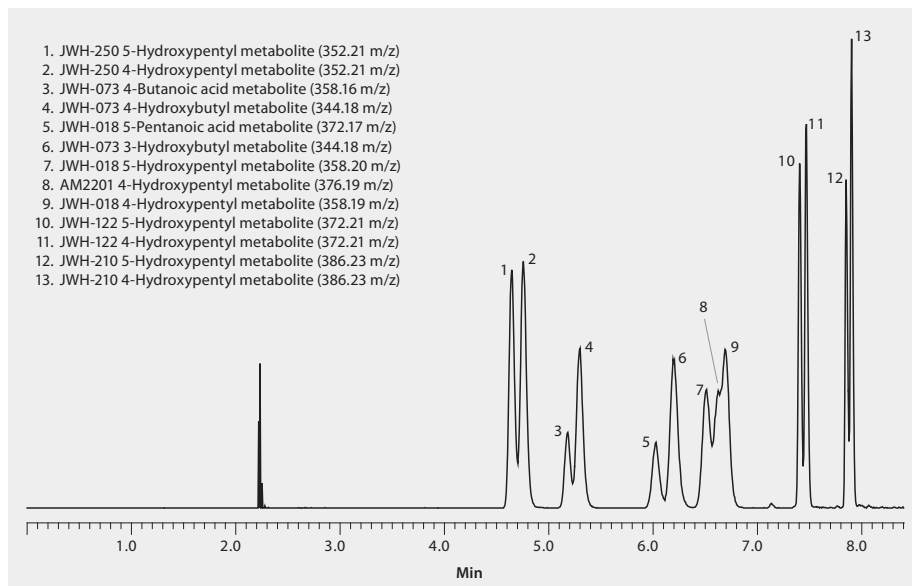


UHPLC-MS Analysis of Spice Cannabinoid Metabolites from Urine Using Titan™ C18

sample preparation	SPE (Solid Phase Extraction)
SPE well plate	SupelSelect HLB 96-Well Plate, 60mg/well (575662-U)
condition	1 mL methanol, then 1 mL water
sample addition	100 ng/mL in matrix
drying	none
washing	1 mL 20% methanol in water
elution	2 mL methanol
eluate post-treatment	none
column	Titan C18 10 cm x 2.1 mm, 1.9 µm particles (577124-U)
mobile phase	(A) 0.1% formic acid in 95:5, water:acetonitrile; (B) 0.1% formic acid in 5:95, water:acetonitrile;
gradient	25% B held for 1 min; to 45% B in 0.5 min; 45% B held for 4.5 min; to 80% B in 0.5 min; 80% B held for 4 min
flow rate	0.5 mL/min
pressure	8756 psi (604 bar)
temp.	35 °C
detector	MS-ESI+,100 - 1000 m/z scan, XIC
injection	2.0 µL
sample	100 ng/mL in methanol
Application No.	G006307



AUTHORIZED DISTRIBUTOR

MZ-Analysentechnik GmbH, Barcelona-Allee 17• D-55129 Mainz
 Tel +49 6131 880 96-0, Fax +49 6131 880 96-20
 e-mail: info@mz-at.de, www.mz-at.de