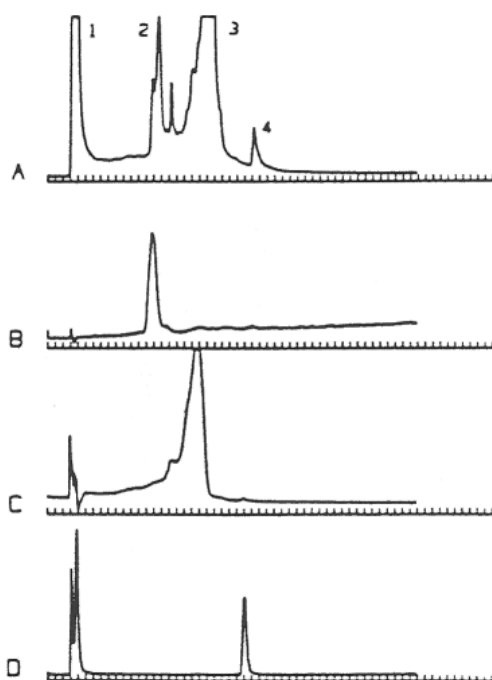


Application Number 107530
Method HPLC
Results



Legend:

Comparison of elution of recombinant yeast cell lysate with standards:

- A) recombinant yeast AB103.1 pYaEGF-25 lysate, not boiled
- B) yeast tRNA (R 0128, Sigma)
- C) E. coli rRNA (R 7628, Sigma)
- D) supercoiled cccDNA markers, 2000 - 16000 base pairs (5622SA, Bethesda Research Laboratories)

Peaks:

- 1 - unretained
- 2 - tRNA
- 3 - rRNA
- 4 - plasmid / chromosomal DNA

Substances	tRNA; rRNA; plasmid; chromosomal DNA						
Product(s)	<table border="0"> <thead> <tr> <th style="text-align: left;">Phase</th> <th style="text-align: left;">REF</th> <th style="text-align: left;">Webshop</th> </tr> </thead> <tbody> <tr> <td>NUCLEOGEN DEAE</td> <td>736601</td> <td>Shop now</td> </tr> </tbody> </table>	Phase	REF	Webshop	NUCLEOGEN DEAE	736601	Shop now
Phase	REF	Webshop					
NUCLEOGEN DEAE	736601	Shop now					
Matrix	cell lysate						
Sample(s)							
Conditions	<p>Eluent A: 5 mol/L urea, 20 mmol/L potassium phosphate, pH 6.9</p> <p>Eluent B: 5 mol/L urea, 20 mmol/L potassium phosphate, pH 6.9 + 1.5 mol/L KCl</p> <p>Gradient: 15 % B to 95 % B in 50 min</p> <p>Flow rate: 1 mL/min</p>						
Detection	UV, 260 nm						
Note							
Author	Coppella, S. et al.						
Source	J. Chromatogr. 402 (1987) 189 - 199						
Disclaimer	<p>Concerning questions to literature applications please contact the cited author/s. Chemicals mentioned in applications are not manufactured or sold by MACHEREY-NAGEL. Applications mentioned in MACHEREY-NAGEL literature or databases are provided for informational purposes only. MACHEREY-NAGEL does not warrant that all applications have been tested in MACHEREY-NAGEL laboratories using MACHEREY-NAGEL products. MACHEREY-NAGEL does not warrant the correctness of the applications.</p>						

Share via Mail

 Print View