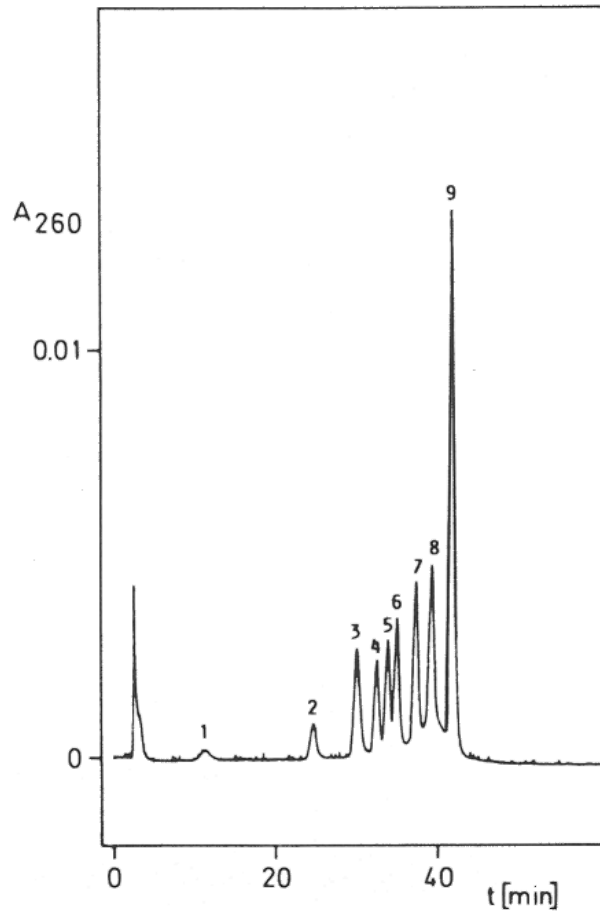


Application Number 107470  
 Method HPLC  
 Results



Legend:

HPLC of a set of restriction fragments from plasmid pBR 322 cleaved with restriction enzyme HinfI, total amount of DNA 10 µg. Peaks (lengths of restriction fragments): 1 - 75 bp, 2 - 154 bp, 3 - 220/221 bp, 4 - 298 bp, 5 - 344 bp, 6 - 396 bp, 7 - 506 bp, 8 - 517 bp, 9 - 1631 bp.

Substances  
 Product(s)

DNA restriction fragments

Phase	REF	Webshop
NUCLEOGEN DEAE	736601	<a href="#">Shop now</a>

Matrix	
Sample(s)	
Conditions	<p>Eluent A: KCl</p> <p>Eluent B: 6 mol/L urea + 30 mmol/L sodium phosphate pH 6.0</p> <p>Gradient (linear): 700 - 1200 mmol/L A in 100 min (5 mmol/min)</p> <p>Flow rate: 1 mL/min</p> <p>Pressure: 68 bar</p> <p>Temperature: 23 °C</p>
Detection	UV, 260 nm
Note	<p>In the cited literature can be also found:</p> <p>HPLC of DNA-RNA hybrids:</p> <ul style="list-style-type: none"> <li>- 1 µg PSTV, 2 µg 65 bp restriction fragment from PSTV-cDNA</li> <li>- hybridization of 1 µg PSTV with 4 µg 65 bp DNA</li> </ul> <p>Analytical HPLC of a set of restriction fragments from the cDNA of PSTV (10 µg) and preparative HPLC of the same set of DNA restriction fragments (2 mg)</p> <p>Analytical separation of a DNA insert from its vector by HPLC (total 5 µg DNA) and preparative separation (total 7 mg DNA)</p>
Author	Hecker, R. et al.
Source	J. Chromatogr. 326 (1985) 251 - 261
Disclaimer	<p>Concerning questions to literature applications please contact the cited author/s. Chemicals mentioned in applications are not manufactured or sold by MACHEREY-NAGEL. Applications mentioned in MACHEREY-NAGEL literature or databases are provided for informational purposes only. MACHEREY-NAGEL does not warrant that all applications have been tested in MACHEREY-NAGEL laboratories using MACHEREY-NAGEL products. MACHEREY-NAGEL does not warrant the correctness of the applications.</p>

Share via Mail

 Print View