

Separation of soft drink ingredients on NUCLEODUR® Phenyl-Hexyl

Method:
HPLC

Matrix

Application-No.:
125980

Substances: quinine; saccharin; caffeine; sorbic acid; benzoic acid

Column: EC 150/4.6 NUCLEODUR® Phenyl-Hexyl, 5 µm

Phase: NUCLEODUR® Phenyl-Hexyl

REF number: 760588.46

Sample: mix of compounds solved in eluent

Conditions:
Eluent A: methanol
Eluent B: 20 mmol/L KH₂PO₄, pH 2.5
Gradient: 20 % A for 6 min, in 6 min to 40 % A, hold for 3 min
Flow rate: 1.0 mL/min
Temperature: 25 °C
Injection volume: 2.0 µL

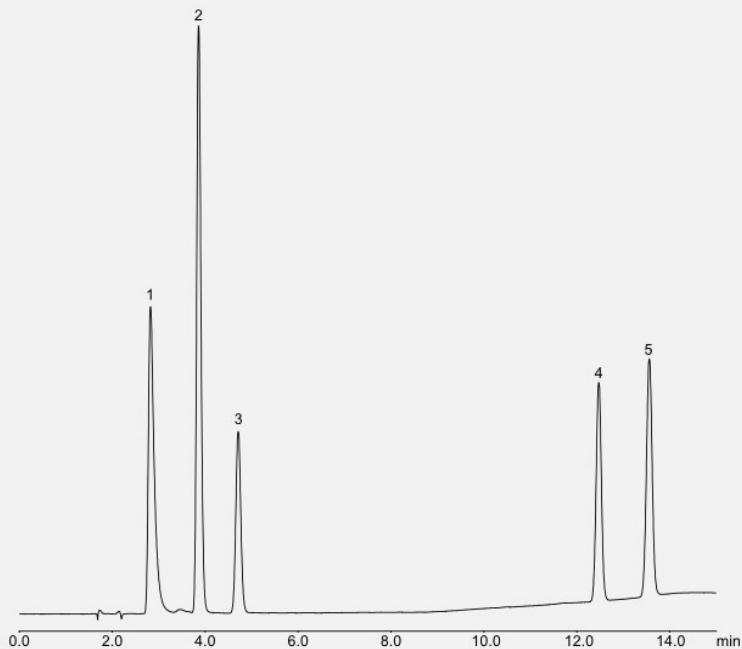
Detection: UV, 220 nm

Author(-s): HPLC department

Source: MACHEREY-NAGEL, Germany 2012

Keywords: soft drink

Chromatogram:



Legend:

- 1 - quinine
- 2 - saccharin
- 3 - caffeine
- 4 - sorbic acid
- 5 - benzoic acid

AUTHORIZED DISTRIBUTOR

MZ-Analyse-technik GmbH, Barcelona-Allee 17 • D-55129 Mainz
Tel +49 6131 880 96-0, Fax +49 6131 880 96-20
e-mail: info@mz-at.de, www.mz-at.de

