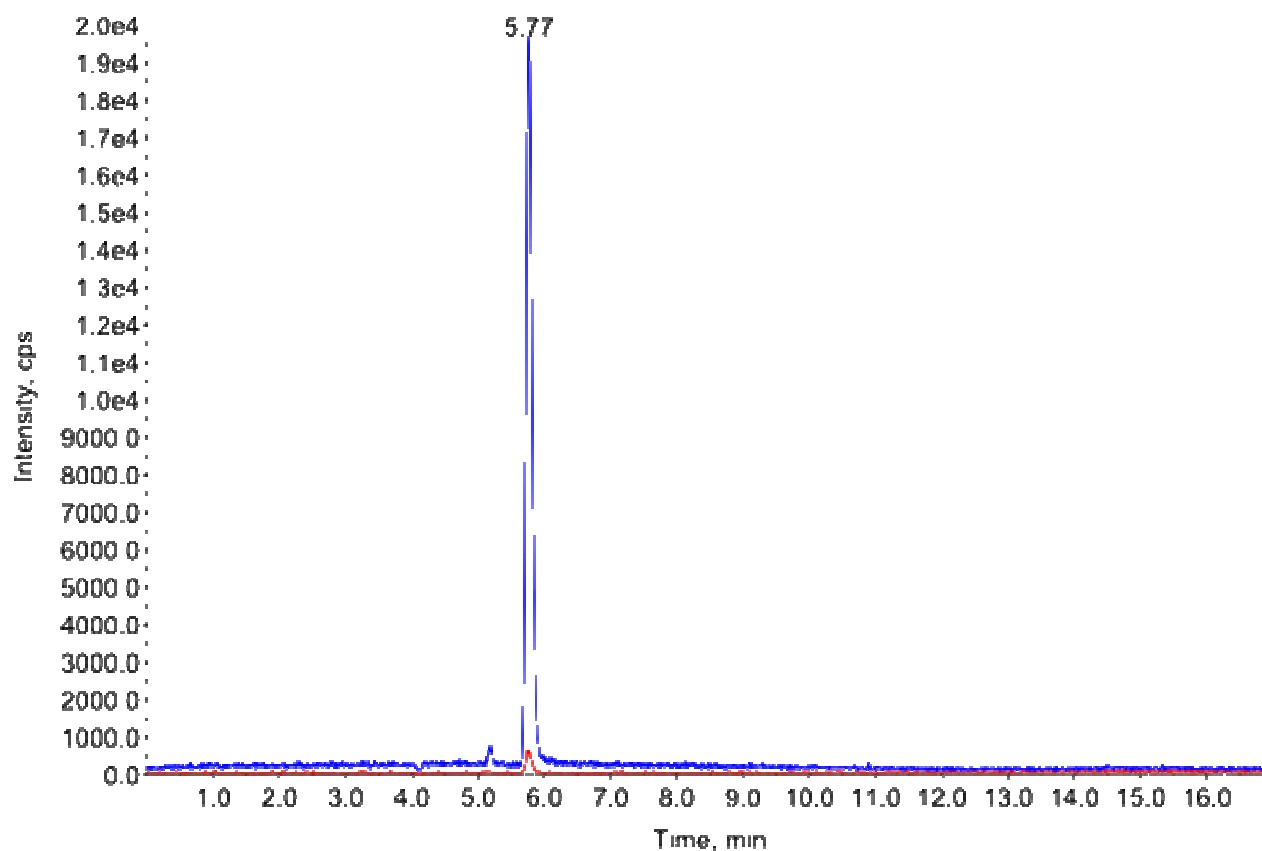


Determination of acrylamide

Application Number 127530



Retention time [min]	Substance	Quantitative transition [m/z]	Qualitative transition [m/z]
5.77	acrylamide	72.4/54.9	72.4/43.9

Column EC 150/3 NUCLEODUR C18 Gravity, 3 μ m
REF 760083.30
Sample(s) Concentrated eluate from SPE (see appl. no. 306140)
Conditions Eluent A: 0.001 % formic acid in water
 Eluent B: 0.001 % formic acid in methanol
 Gradient: 10 % B in 10 min to 100 % B, back to 10 % B in 2 min, hold for 5 min
Flow rate 0.25 mL/min
Temperature 60 °C
Injection volume 10 μ L
Detection MS/MS: AB Sciex API 3200

Ion source	Turbo Spray (ESI), polarity: positiv
Scan type	MRM
Curtain gas	15 psig
Ion spray voltage	5000V
Temperature	650 °C
Gas 1 (nebulizer)	60 psig
Gas 2 (turbo gas)	50 psig
CAD gas	6 psig
Note	Methanol content in sample must be 20 % or less.

Author	Application department
Source	MACHEREY-NAGEL, Germany 2016