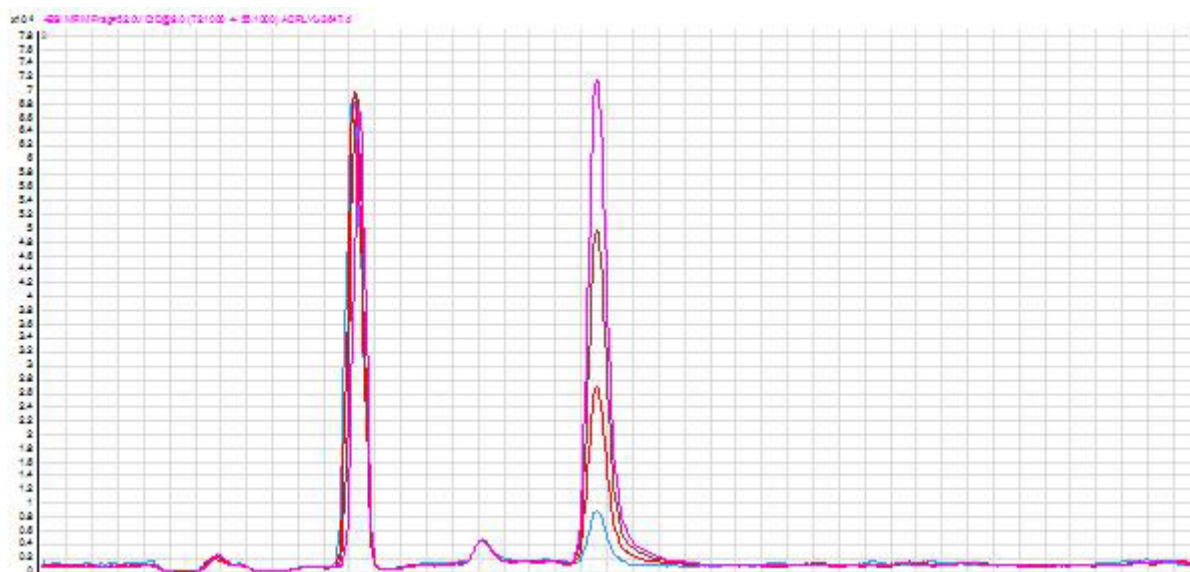


Determination of acrylamide in coffee

Application Number 127870



Column	EC 250/2 NUCLEODUR C18 HTec, 5µm
REF	760316.20
Sample	SPE with CHROMABOND ABC18 (REF 730533)
Note	In the case of coffee particularly the matrix in combination with the low molecular mass (which adversely affects the LC-MS response of subsequent HPLC-MS/MS) is a special problem. Therefore, meaningful results can be obtained only after purification via SPE and standard addition.
Conditions	Eluent A: 50 mmol/L formic acid Eluent B: acetonitril Gradient: 0 % B for 7 min, 0 - 80 % B in 3 min, 80 % B for 2 min, 80 - 0 % B in 0.1 min
Flow rate	0.2 mL/min
Temperature	25 °C
Injection volume	5.0 µL
Detection	MS/MS (ESI + Jetstream positive) MRM m/z [M+H] 72.1 → 55.1 and 72.1 → 44.1
Author	Helle, N.; Chmelka, F.; Matkovskaia, M.
Source	TeLA GmbH, Geestland, Germany 2016