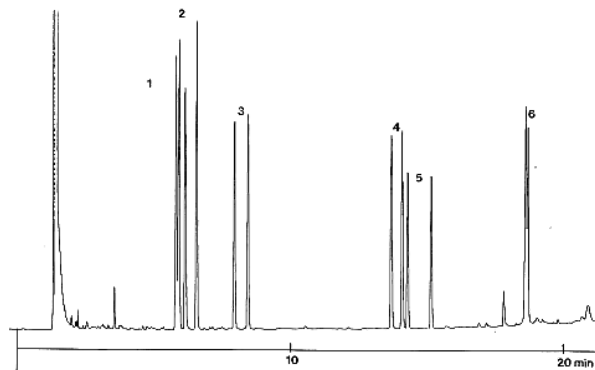


Application Number 202592

Method GC

Results



Legend:

- 1 - alanine
- 2 - valine
- 3 - leucine
- 4 - proline
- 5 - aspartic acid
- 6 - phenylalanine

D enantiomer is eluting first (except for proline)

Substances alanine; valine; leucine; proline; aspartic acid; phenylalanine

Product(s)

Phase	REF	Webshop
LIPODEX	723368.2	Shop now
E	5	

Matrix

Sample(s)	Derivatization with TFA
Conditions	Injection volume: 1 µL Carrier gas: 60 kPa hydrogen Split: 1:100 Temperature: 90 °C --> 190 °C, 4 °C/min
Detection	FID, 250 °C
Note	
Author	GC department
Source	MACHEREY-NAGEL
Disclaimer	Concerning questions to literature applications please contact the cited author/s. Chemicals mentioned in applications are not manufactured or sold by MACHEREY-NAGEL. Applications mentioned in MACHEREY-NAGEL literature or databases are provided for informational purposes only. MACHEREY-NAGEL does not warrant that all applications have been tested in MACHEREY-NAGEL laboratories using MACHEREY-NAGEL products. MACHEREY-NAGEL does not warrant the correctness of the applications.

[Share via Mail](#)[Print View](#)**AUTHORIZED DISTRIBUTOR**

MZ-Analysentechnik GmbH, Barcelona-Allee 17 • D-55129 Mainz
Tel +49 6131 880 96-0, Fax +49 6131 880 96-20
e-mail: info@mz-at.de, www.mz-at.de