

Affordable chiral purification is now a reality. **SureFlash** columns are packed with a variety of chiral stationary phases which match those used in analytical development.

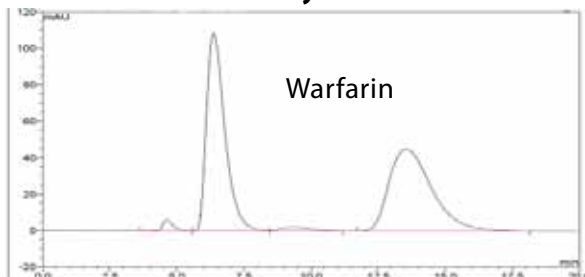
SureFlash columns are stable up to 80 bar/1160 PSI and use axial compression to compensate for voids at the inlet which may develop over time.



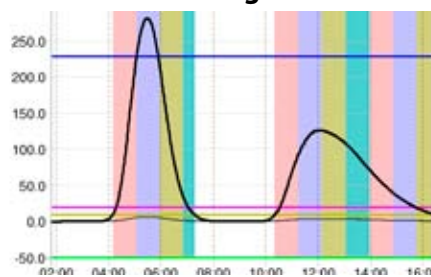
High Pressure Axial Compression Column Hardware.

Eliminate voids by rotating the end fitting.

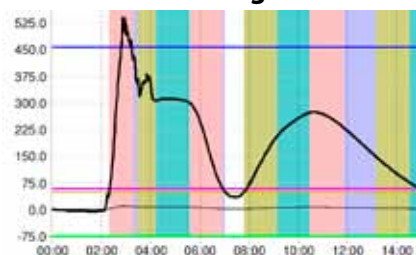
Analytical



40mg



120mg



Column Size	Scaling Factor	Sample Load
250 x 4.6 mm	1	<5 ug
250 x 10 mm	5	53 mg
250 x 15 mm	11	120 mg
250 x 25 mm	30	333 mg
250 x 50 mm	118	1333 mg

Phase	250 x 10 mm 80 bar/1160 PSI		250 x 15 mm 70 bar/1015 PSI		250 x 25 mm 50 bar/715 PSI		250 x 50 mm 30 bar/435 PSI	
	SF	Price \$	SF	Price \$	SF	Price \$	SF	Price \$
Chiralpak AD 20 µm	SF10101	2900	SF20101	3600	SF30101	5900	SF40101	Quote
Chiralpak OD 20 µm	SF10102	2900	SF20102	3600	SF30102	5900	SF40102	Quote
Chiralpak IA 20 µm	SF10103	3200	SF20103	3900	SF30103	6200	SF40103	Quote
Chiralpak IC 20 µm	SF10104	3200	SF20104	3900	SF30104	6200	SF40104	Quote

The analytical method was scaled up from a 250 x 4.6 mm to a 250 x 15 mm column.

100% purity was achieved on sample loads of 40 mg and 120 mg. The column was run on the puriFlash 430 at an average pressure of 7 bar.

Based on the scaling factors a 250 x 50 mm column would be suitable for sample loads in excess of 1 gram.

Test Conditions

Sample: Warfarin
 Chiral Phase: Chiralpak AD
 Mobile Phase: 80:20 Heptane:Ethanol + 0.2% TFA
 Analytical: 250 x 4.6 mm, 10 µm particle size
 1.0 ml/min, 450 PSI
 Preparative: 250 x 15 mm, 20 µm particle size
 11.0 ml/min 7 Bar / 100 PSI