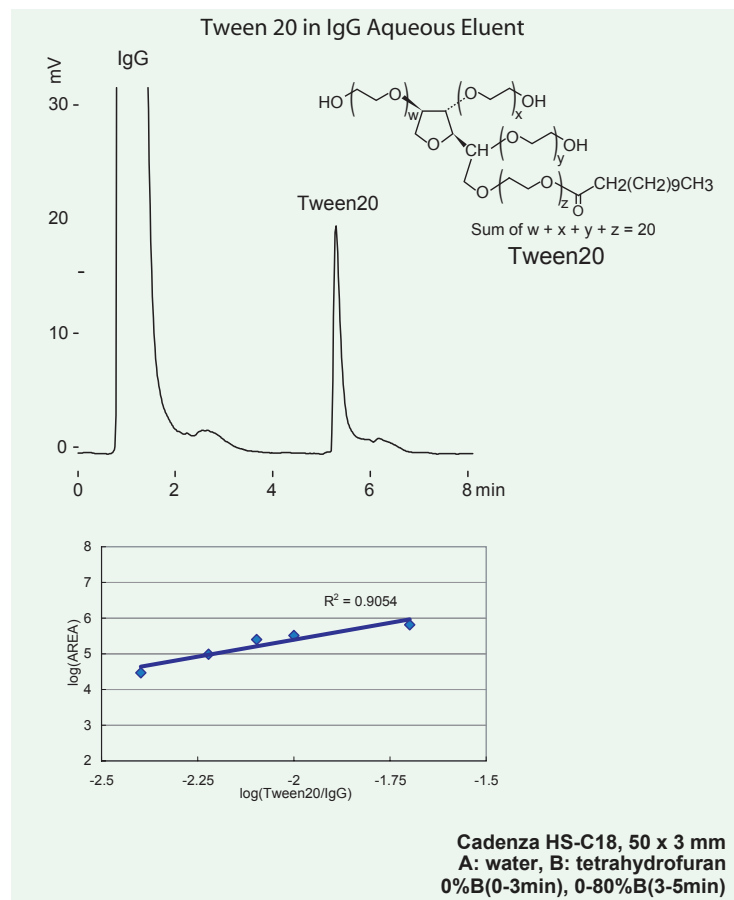
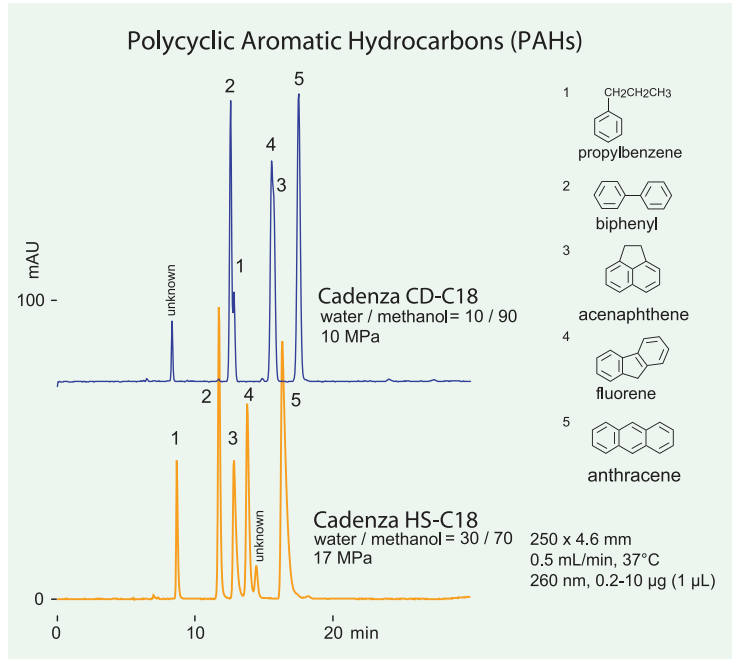
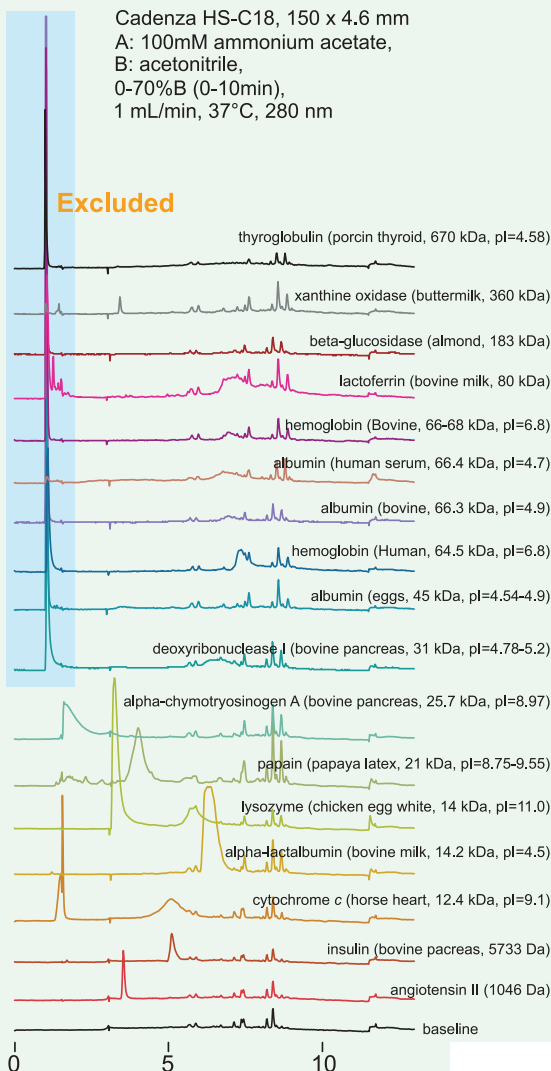
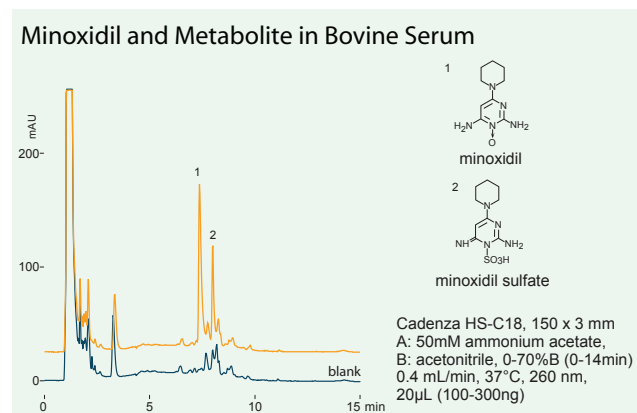
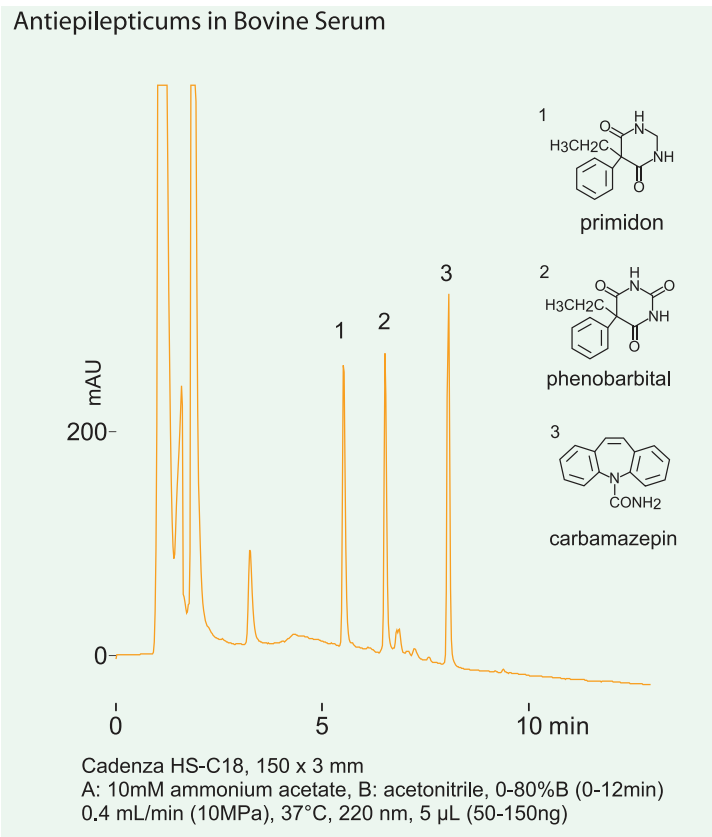
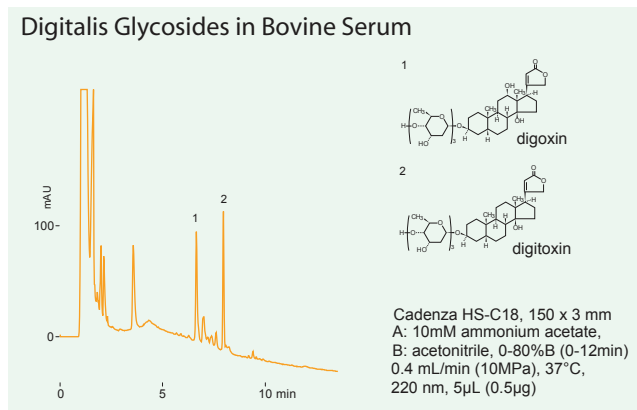


- Direct injection eliminates extraction and saves you time
- Elutes larger proteins (>30kDa) immediately and then separates smaller compounds
- Revolutionary technology provides excellent batch-to-batch reproducibility
- Works best with hydrophobic compounds

Relationship between molecular weight and protein exclusion in a hybrid ODS stationary phase



● Direct Injection of Bovine Serum



● Ordering Information for Cadenza HS-C18 Columns

3µm Column, Pressure limits of up to: 20MPa, 250 bar, 3,000 psi

| | Internal Diameter | | | | | | |
|---------------|-------------------|--------|--------|--------|--------|--------|---------|
| Column Length | 1.0 mm | 1.5 mm | 2.0 mm | 3.0 mm | 4.6 mm | 6.0 mm | 10.0 mm |
| 10 | | | HS020 | HS030 | HS000 | | |
| 20 | | | HS029 | HS039 | HS009 | | |
| 30 | HS011 | HS071 | HS021 | HS031 | HS001 | HS061 | HS0P1 |
| 50 | HS012 | HS072 | HS022 | HS032 | HS002 | HS062 | HS0P2 |
| 75 | HS013 | HS073 | HS023 | HS033 | HS003 | HS063 | HS0P3 |
| 100 | HS014 | HS074 | HS024 | HS034 | HS004 | HS064 | HS0P4 |
| 150 | HS015 | HS075 | HS025 | HS035 | HS005 | HS065 | HS0P5 |
| 250 | HS016 | HS076 | HS026 | HS036 | HS006 | HS066 | HS0P6 |
| 500 | | | | | HS007 | | |

Guard Column System for Cadenza HS-C18

| | Internal Diameter | | | | | | |
|----------------------------|-------------------|--------|--------|--------|--------|--------|---------|
| | 1.0 mm | 1.5 mm | 2.0 mm | 3.0 mm | 4.6 mm | 6.0 mm | 10.0 mm |
| Guard Holder | GCH01S | GCH01S | GCH01S | GCH01S | GCH01S | GCH01S | GCH02M |
| Guard Cartridge (Set of 3) | GCHS0C | GCHS0C | GCHS0S | GCHS0S | GCHS0S | GCHS0S | GCHS0M |

All of our stationary phases can also be made in the following internal diameters:

Nano: 0.05mm, 0.075mm **Capillary:** 0.1mm, 0.3mm, 0.5mm