



# BIOANALYSIS CATALOG

**GL Sciences Inc.**

**FROM SAMPLE PREPARATION TO  
ANALYTICAL SEPARATION**

# Table of Contents

## Proteomics

---

|   |   |
|---|---|
| Spin Column Trypsin Digestion.....              | <b>MonoSpin Trypsin</b>   |
| Market Leading Phosphopeptide Enrichment.....   | <b>Titansphere 5 µm Bulk Media</b><br><b>Titansphere 10 µm Bulk Media</b><br><b>Titansphere Phos-TiO 10 µm Bulk Media</b><br><b>NEW Titansphere Phos-TiO MP Kit</b><br><b>Titansphere Phos-TiO Kit</b><br><b>Titansphere Phos-TiO for Large Volume Sample</b> |
| Desalting Phosphopeptide-Enriched Samples.....  | <b>GL-Tip SDB and GC</b>  |
| Efficient Fractionation of Peptide Samples..... | <b>GL-Tip SCX and SDB-SCX</b>   |
| Identification of Peptides/Proteins.....        | <b>Meter Scale MonoCap HighResolution 2000 Series</b><br><b>Other MonoCap Standard Length Columns</b>   |
| Electrospray Emitter for ESI-LC/MS.....         | <b>MonoSpray</b>  |

## Sample Preparation for LC/MS

---

|  |  |
|--|--|
| Solid Phase Extraction Spin Columns.....             | <b>MonoSpin and MonoSpin Large Type Series</b> |
| Protein Removal and Phospholipid Removal Plates..... | <b>FastRemover Series</b>                      |
| Desalting Phosphopeptide-Enriched Samples.....       | <b>GL-Tip SDB and GC</b>                       |
| Efficient Fractionation of Peptide Samples.....      | <b>GL-Tip SCX and SDB-SCX</b>                  |

## Exosome

---

|  |                 |
|--|-----------------|
| High Purity Exosome Isolation Columns..... | <b>EVSecond</b> |
|--|-----------------|

## Antibody

---

|                                       |                               |
|---------------------------------------|-------------------------------|
| Rapid Purification of Antibodies..... | <b>MonoSpin ProA and ProG</b> |
|---------------------------------------|-------------------------------|

## DNA

---

|   |                       |
|---|-----------------------|
| Purification and Extraction of DNA..... | <b>MonoFas Series</b> |
|---|-----------------------|

## Proteins

Spin Column Trypsin Digestion

**MonoSpin Trypsin**



## Peptides

Market Leading Phosphopeptide Enrichment

**Titansphere 5  $\mu$ m Bulk Media**

**Titansphere 10  $\mu$ m Bulk Media**

**Titansphere Phos-TiO 10  $\mu$ m Bulk Media**

**NEW Titansphere Phos-TiO MP Kit**

**Titansphere Phos-TiO Kit**

**Titansphere Phos-TiO for Large Volume Sample**



## Phosphopeptide

Desalting Phosphopeptide-Enriched Samples

**GL-Tip SDB and GC**

Efficient Fractionation of Peptide Samples

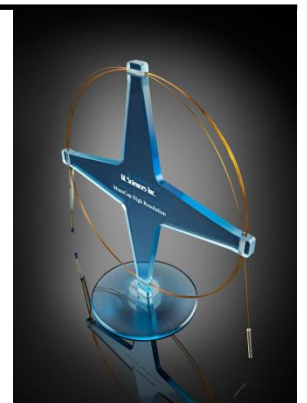
**GL-Tip SCX and SDB-SCX**



## LC/MS/MS

Identification of Peptides/Proteins

**Meter Scale MonoCap HighResolution 2000 Series**  
**Other MonoCap Standard Length Columns**



# Phosphorylation Purification & Enrichment

## Phosphorylated Protein Research

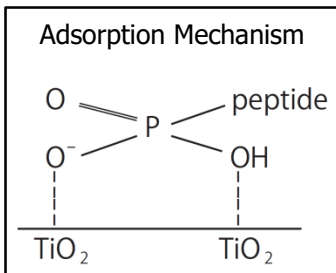
Protein phosphorylation is recognized as a fundamental process which regulates cell differentiation, growth, and migration. Analyzing protein phosphorylation is complicated by the low concentration of any given phosphoprotein and any one time, and the relatively low ionization efficiency of phosphopeptides in MS analysis. Therefore, enrichment of phosphopeptides and the relative reduction of non-phosphorylated peptides is critical to accurate analysis of protein digests by LC/MS.

GL Sciences' Titanium Dioxide (TiO<sub>2</sub> or Titania) products have emerged as the most effect means of phosphopeptide enrichment of protein digests prior to LC/MS analysis, replacing IMAC as the primary means of phosphopeptide sample pretreatment. Enrichment by titanium dioxide and IMAC, remain, however, complimentary techniques and are often used in combination to obtain optimal phosphopeptide analysis.

What Makes GL Sciences' Titanium Dioxide Products Unique and Superior?

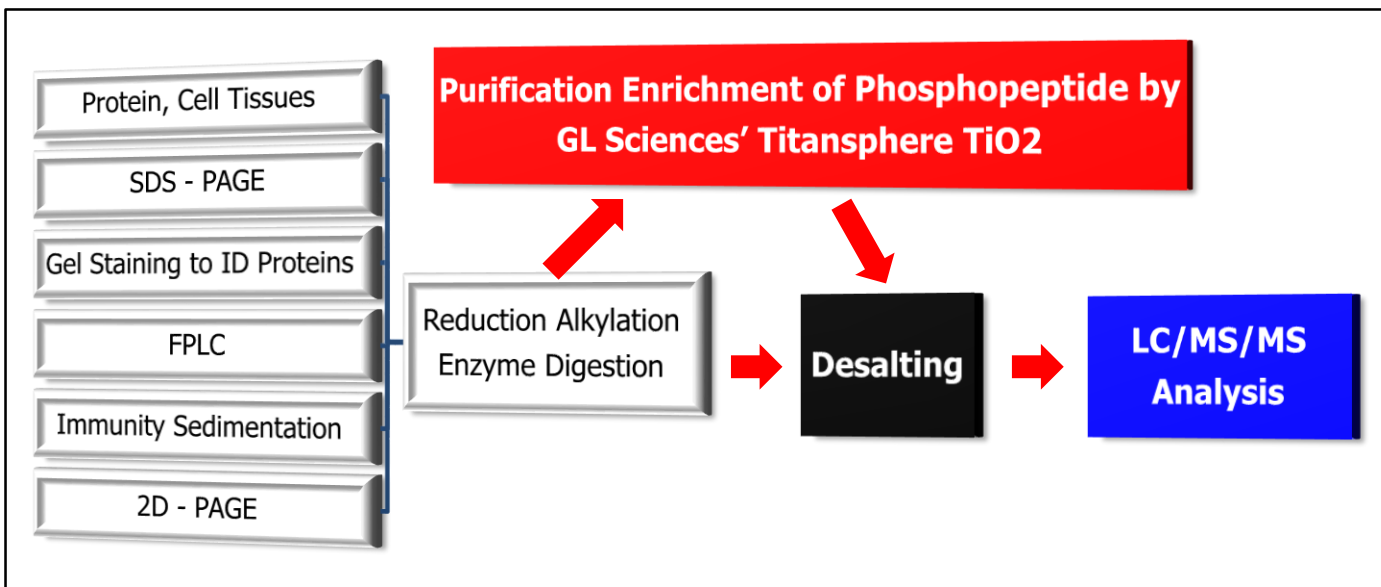
Titanium Dioxide exists in three crystalline forms, known as rutile, anatase, and brookite. Rutile and Anatase forms are the most common and most useful for phosphopeptide enrichment, and the ratio of rutile form to anatase form has significant implications for applicabililty to enrichment of phosphopeptides. GL Sciences' manufacturing technique for it's phosphopeptide enrichment products produces a highly spherical bead with the optimum ratio of crystal forms of TiO<sub>2</sub>. The primary reasons the GL Sciences' Pho-TiO products show superior performance is a direct result of the unique formulation of our titanium dioxide beads.

## Principal of Phosphopeptide Enrichment



Phosphate groups are preferentially adsorbed to the surface of titanium dioxide under acidic conditions and are eluted under basic condition. Non-phosphorylated acid peptides non-specifically bound to the TiO<sub>2</sub> can be reduced by adding acid modifiers to the loading and/or wash buffers.

## Basics of Phosphopeptide Analyses by LC/MS/MS



## Titansphere™ Bulk Materials

### Bulk Sorbent Materials for Purification & Enrichment of Phosphopeptides

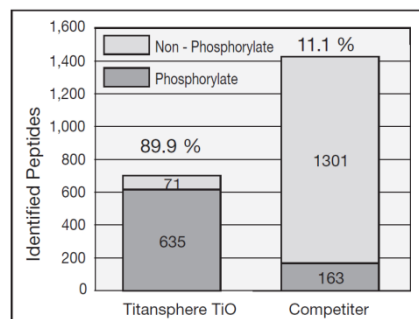
While GL Sciences' Phos-TiO spin columns based enrichment products are useful for most sample pretreatment applications, some investigators require bulk titanium dioxide media for specialized applications. Our market leading Titansphere Phos-TiO Kit is now available in bulk media which is Titansphere Phos-TiO 10 μm bulk media, and is optimized for purifying and enriching more phosphopeptide.

### Applications

#### Efficient Purification from HeLa Cell Lysate

The data at right shows the superior performance of Titansphere TiO using the HeLa Cell Lysate consisting mainly of non-phosphorylated peptides. Titansphere TiO shows exceptional selectivity - almost 90% of the bound peptides were phosphopeptides, and excellent capacity for total phosphopeptide binding. A competitive TiO product is shown, binding mainly non-phosphorylated peptides and a much lower total number of discreet phosphopeptide species.

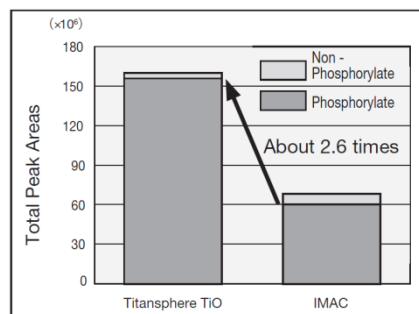
Sample: HeLa Cell Lysate, Sample volume: 50 μg,  
Titansphere TiO volume: 1 mg



#### Compare Titansphere TiO with IMAC

The graph at right shows how Titansphere TiO compares to an IMAC enrichment using Arabidopsis cell extract. Titansphere TiO provides substantially higher total capacity and a much higher number of discreet phosphopeptides isolated.

Sample: Arabidopsis Cell Extract, Sample volume: 100 μg,  
Titansphere TiO volume: 1 mg



### Specifications

| Description     | Titansphere TiO          |
|-----------------|--------------------------|
| Particle Size   | 5 μm, 10 μm              |
| Particle Shape  | Spherical                |
| Adsorption Spot | Titanium Dioxide Crystal |
| Pore Size       | 100 Å (10 μm)            |
| pH Range        | 2 ~ 12                   |
| Gravity         | 1.74                     |

### Ordering Information

#### Titansphere™ Bulk Materials (Previous Version)

| Description                   | Particle Size | Qty  | Cat. No.   |
|-------------------------------|---------------|------|------------|
| Titansphere TiO 5 μm, 500 mg  | 5 μm          | 1/pk | 5020-75000 |
| Titansphere TiO 10 μm, 500 mg | 10 μm         | 1/pk | 5020-75010 |

## Titansphere™ Phos-TiO Bulk Material

### Bulk Sorbent Materials for Purification & Enrichment of Phosphopeptides

---

While GL Sciences' Phos-TiO spin tips based enrichment products are useful for most sample pretreatment applications, some investigators require bulk titanium dioxide media for specialized applications. Our market leading Titansphere Phos-TiO Kit is now available in bulk media which is Titansphere Phos-TiO 10 µm bulk media, and is optimized for purifying and enriching more phosphopeptide.

### References

---

1. Phosphopeptide enrichment by aliphatic hydroxy acid-modified metal oxide chromatography for nano-LC-MS/MS in proteomics applications, Sugiyama N, Masuda T, Shinoda K, Nakamura A, Tomita M, Ishihama Y., Mol Cell Proteomics. 2007 Jun;6(6):1103-9.
2. Highly selective enrichment of phosphorylated peptides using titanium dioxide, Nature Protocols 1, 2006, 1929-1935
3. Global, in vivo, and site-specific phosphorylation dynamics in signaling networks, Olsen JV, Blagoev B, Gnäd F, Macek B, Kumar C, Mortensen P, Mann M., Cell. 2006 Nov 3;127(3):635-48.
4. Successive and selective release of phosphorylated Peptides captured by Hydroxy Acid-Modified Metal Oxide Chromatography, Yutaka kyono, Naoyuki Sugiyama, Koshi Imami, Masaru Tomita, and Yasushi Ishihama, J Proteome Res., 2008, 7(10), 4585-93
5. Extended coverage of singly and multiply phosphorylated peptides from a single Titanium Dioxide Microcolumn, Anal Chem., 2015, 87(20), 10213-21

### Ordering Information

---

#### Titansphere™ Phos-TiO Bulk Material (Same Bulk Media packed into Titansphere Phos-TiO Kit)

| Description                            | Particle Size | Qty  | Cat. No.   |
|--|---------------|------|------------|
| Titansphere Phos-TiO Bulk 10um, 500 mg | 10 µm         | 1/pk | 5010-21315 |

**NEW Titansphere™ Phos-TiO MP Kit****Efficiently Enrich BOTH Singly and Multiply Phosphorylated Peptides**

GL Sciences' is known as the best manufacturer for the enrichment/purification of phosphopeptide, which our Titansphere Phos-TiO kit and bulk resins are widely used throughout the world in major cancer research institutes and proteomics core facilities.

The new Titansphere Phos-TiO MP Kit employs a new protocol in the HAMMOC method, which enables highly efficient and selective recovery of not only singly, but also for multiply phosphorylated peptides. Specifically, the new kit fractions the singly and multiply phosphorylated peptides separately, which prevents ion suppression in LC-MS/MS detection and delivers higher recovery of multiply phosphorylated peptides.

**Features**

- High Recovery of not only Singly, but also for Multiply Phosphorylated Peptides.
- All Operation is done using an Easy-To-Use Centrifuge.

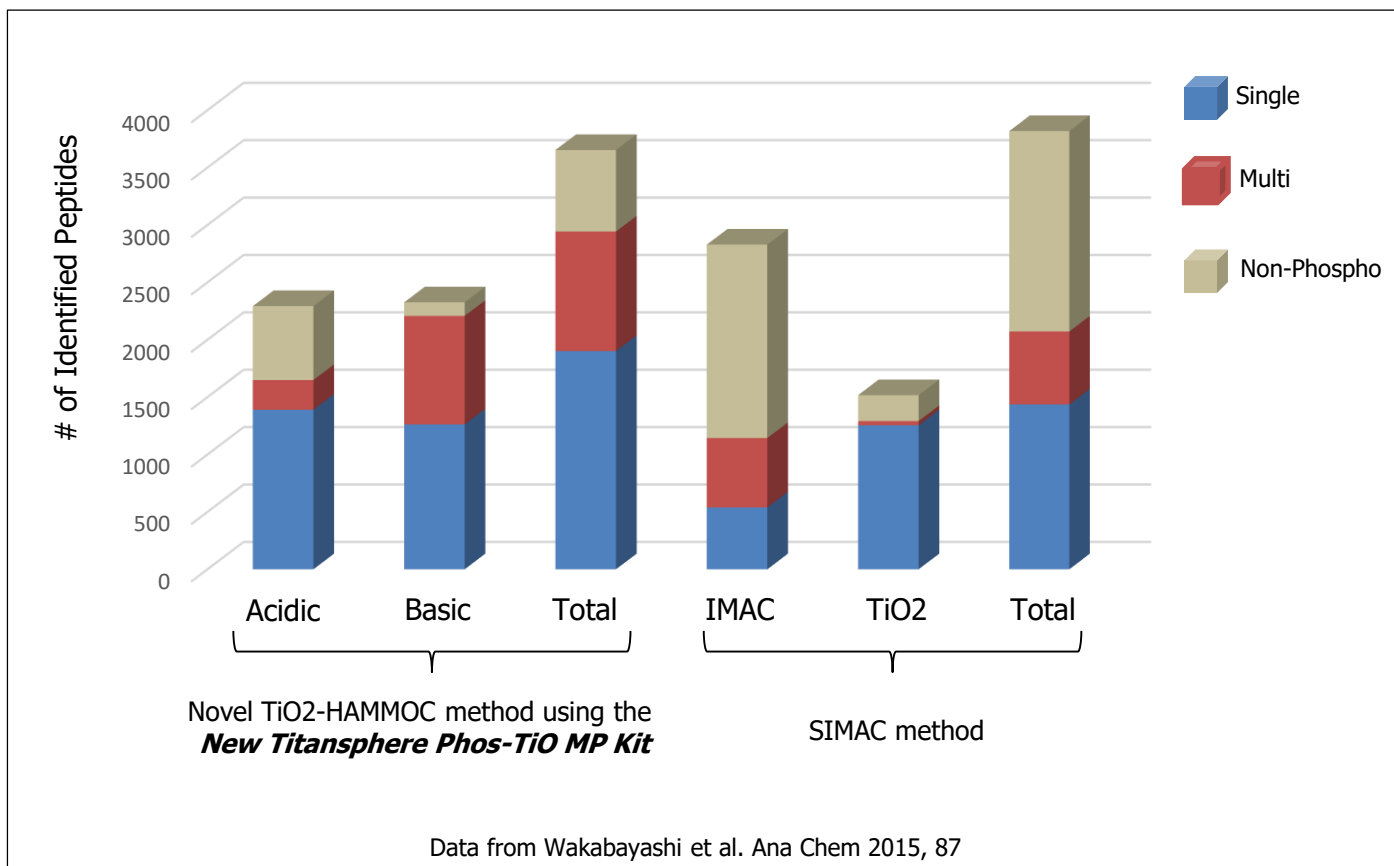
**Sample Loading Capacity**

| Description                      | Content   |             |
|----------------------------------|---|-------------|
| Sample                           | Tyr(PO <sub>3</sub> H <sub>2</sub> ) - Angiotensin II |             |
| Spin Tip Sorbent Mass/Tip Volume | 1 mg/ 200 µL  | 3 mg/200 µL |
| Sample Loading Capacity          | 1.2 µg  | 3.5 µg      |

**Titansphere Phos-TiO MP Kit Contents**

| Cat. No.                            | 5010-21282           | 5010-21283           |
|-------------------------------------|----------------------|----------------------|
| Titansphere Phos-TiO MP Kit         | 24 pcs               | 24 pcs               |
| Titansphere Sorbent Mass/Tip Volume | 1 mg / 200 µL        | 3 mg / 200 µL        |
| Spin Tip Quantity                   | 24 pcs (6 x 4 packs) | 24 pcs (6 x 4 packs) |
| Waste Fluid Tube Quantity           | 24 pcs               | 24 pcs               |
| Recovery Tube (2.0 mL) Quantity     | 24 pcs               | 48 pcs               |
| Recovery Tube (1.5 mL) Quantity     | 48 pcs               | 48 pcs               |
| Solution B (Lactic acid) Quantity   | 2 mL                 | 2 mL                 |
| Instruction Manual                  | 1/pk                 | 1/pk                 |

## Comparison of Recovery of **BOTH** Singly and Multiply Phosphorylated Peptides



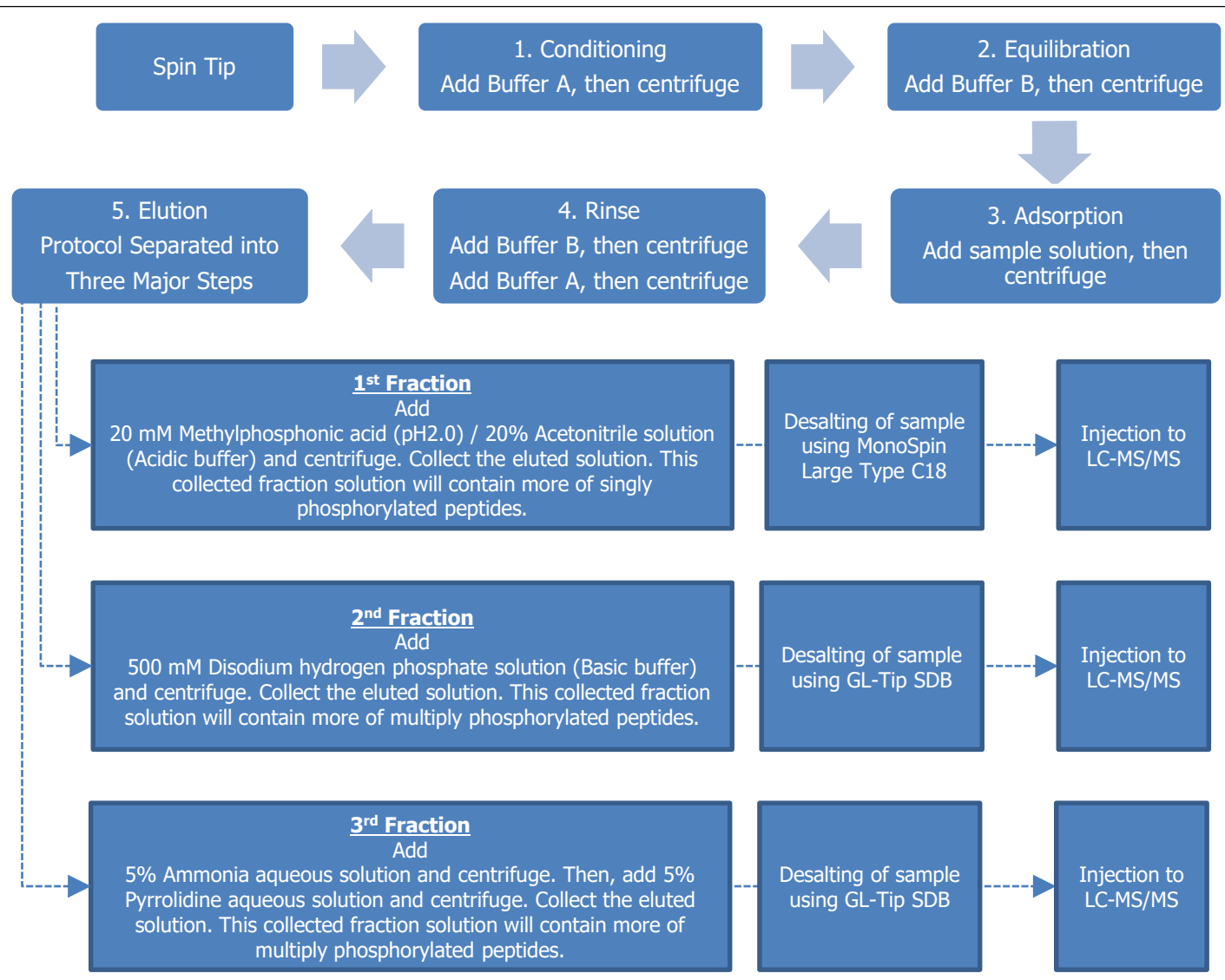
The above experiment was done using HeLa cells 100 µg to prove the new Titansphere Phos-TiO MP Kit show highly efficient recovery of both singly and multiply phosphorylated peptides compared to SIMAC (Sequential Elution from IMAC) method.

The SIMAC method is generally separated into two major protocols, which the initial enrichment and separation of mono- and multi-phosphorylated peptides uses an Immobilized Metal ion Affinity Chromatography and a subsequent enrichment of the mono-phosphorylated peptides using titanium dioxide chromatography. Finally, the two separated phosphopeptide fractions are then analyzed by LC-MS/MS.

In the new Titansphere Phos-TiO MP Kit, singly phosphorylated peptides were recovered more when using an acidic elution buffer, while the multiply phosphorylated peptides were recovered more when using a basic elution buffer. As proven above, in total, the new Titansphere Phos-TiO MP Kit recovered more of both singly and multiply phosphorylated peptides than the SIMAC method.



**Typical Enrichment Protocol using Titansphere Phos-TiO MP Kit**



**Remarks:**

- Buffer A, Buffer B, Methylphosphonic acid, Disodium hydrogen phosphate, Ammonia aqueous solution and 5% Pyrrolidine aqueous solution are not included in the kit due to their designation as hazardous materials for the purposes of air transportation. Therefore, the user must prepare these solutions in their lab, according to the procedure detailed in the instruction manual.
- Solution B is included in the kit, which is Lactic acid.
- The preparation procedure of Buffer A and B are as follows.

|          |                 |                                   |
|----------|-----------------|-----------------------------------|
| Buffer A | 2% TFA solution | 1mL                               |
|          | Acetonitrile    | 4mL                               |
|          | Total           | 5mL (Use 3mL for making Buffer B) |

|          |            |     |
|----------|------------|-----|
| Buffer B | Solution B | 1mL |
|          | Buffer A   | 3mL |
|          | Total      | 4mL |

## Ordering Information

### Titansphere™ Phos-TiO MP Kit

- Centrifuge Adapter, 24 pcs/pk (Cat. No. 5010-21514) must be purchased once to use the Titansphere Phos-TiO MP Kit.
- This centrifuge adapter is reusable.
- Lactic acid is Solution B, which is already included in the kit, however, can be purchased separately for future requirements.

| Description  | Sorbent Mass/Tip Volume | Quantity | Cat. No.   |
|--|-------------------------|----------|------------|
| Titansphere Phos-TiO MP Kit  | 1 mg / 200 mL           | 24 pcs   | 5010-21282 |
|  | 3 mg / 200 mL           | 24 pcs   | 5010-21283 |
| Centrifuge Adapter   | -                       | 24 pcs   | 5010-21514 |
| Lactic acid for Titansphere Phos-TiO<br>(This is Solution B included in the kit) | 15 mL                   | 1/pk     | 5010-21295 |

### Titansphere Phos-TiO MP Kit with Desalting Columns

- These special packages includes optimized desalting columns/spin tips to be used with Phos-TiO MP Kit.

| Package Contents   | Package Cat. No. |
|--|------------------|
| Titansphere Phos-TiO MP Kit, 1mg /200 mL, 24 pcs/pk<br>(Cat. No. 5010-21282) | 5010-21272       |
| MonoSpin Large type C18, 30 pcs/pk<br>(Cat. No. 7510-11320)                  |                  |
| GL-Tip SDB, 96 pcs/pk<br>(Cat. No. 7820-11200)                               |                  |

| Package Contents   | Package Cat. No. |
|--|------------------|
| Titansphere Phos-TiO MP Kit, 3mg /200 mL, 24 pcs/pk<br>(Cat. No. 5010-21283) | 5010-21273       |
| MonoSpin Large type C18, 30 pcs/pk<br>(Cat. No. 7510-11320)                  |                  |
| GL-Tip SDB, 96 pcs/pk<br>(Cat. No. 7820-11200)                               |                  |

### Titansphere Phos-TiO Spin Tips

- Spin tips are also available separately.

| Description                    | Sorbent Mass/Tip Volume | Quantity | Cat. No.   |
|--------------------------------|-------------------------|----------|------------|
| Titansphere Phos-TiO Spin Tips | 1 mg / 200 µL           | 24 pcs   | 5010-21316 |
|                                |                         | 96 pcs   | 5010-21317 |
|                                | 3 mg / 200 µL           | 24 pcs   | 5010-21307 |
|                                |                         | 96 pcs   | 5010-21308 |

## Titansphere™ Phos-TiO Kit (Previous Version)

### Enrichment of Phosphopeptide Using Spin Tips

This is the previous phosphopeptide enrichment kit that GL Sciences introduced to the market, which became the most popular kit worldwide. The titanium dioxide particles contained in the spin tips (available in 1 mg/10 µL and 3 mg/200 µL sizes) is specially treated to maximize selectivity for phosphorylated species, and the conditioning and washing buffers contain components to displace the few non-phosphorylated compounds which might originally adhere to the media.

### Features

- High Recovery of Singly Phosphorylated Peptides.
- All Operation is done using an Easy-To-Use Centrifuge.

### Sample Loading Capacity

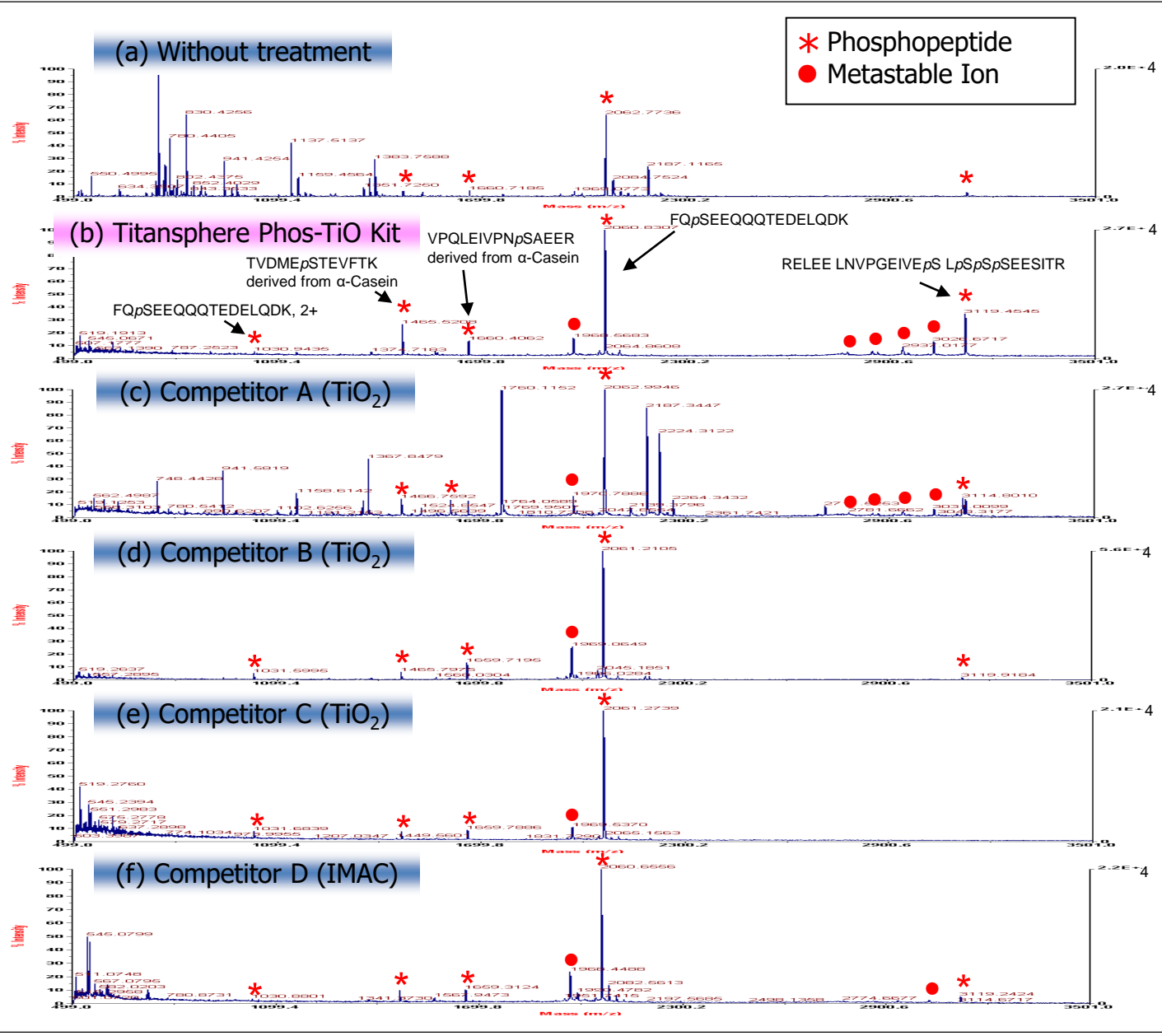
| Description                      | Content   |             |
|----------------------------------|---|-------------|
| Sample                           | Tyr(PO <sub>3</sub> H <sub>2</sub> ) - Angiotensin II |             |
| Spin Tip Sorbent Mass/Tip Volume | 1 mg/ 10 µL   | 3 mg/200 µL |
| Sample Loading Capacity          | 1.2 µg  | 3.5 µg      |

### Titansphere Phos-TiO Kit Contents

| Cat. No.                            | 5010-21309           | 5010-21310            | 5010-21311           | 5010-21312            |
|-------------------------------------|----------------------|-----------------------|----------------------|-----------------------|
| Titansphere Phos-TiO Kit for Export | 24 pcs               | 96 pcs                | 24 pcs               | 96 pcs                |
| Titansphere Sorbent mass/Tip Volume | 1 mg / 10 µL         |                       | 3 mg / 200 µL        |                       |
| Spin Tip Quantity                   | 24 pcs (6 x 4 packs) | 96 pcs (6 x 16 packs) | 24 pcs (6 x 4 packs) | 96 pcs (6 x 16 packs) |
| Waste Fluid Tube Quantity           | 24 pcs               | 96 pcs                | 24 pcs               | 96 pcs                |
| Recovery Tube Quantity              | 24 pcs               | 96 pcs                | 24 pcs               | 96 pcs                |
| Solution B (Lactic acid) Quantity   | 2 mL                 | 6 mL                  | 2 mL                 | 6 mL                  |
| Instruction Manual                  | 1/pk                 | 1/pk                  | 1/pk                 | 1/pk                  |

# Titansphere™ Phos-TiO Kit (Previous Version)

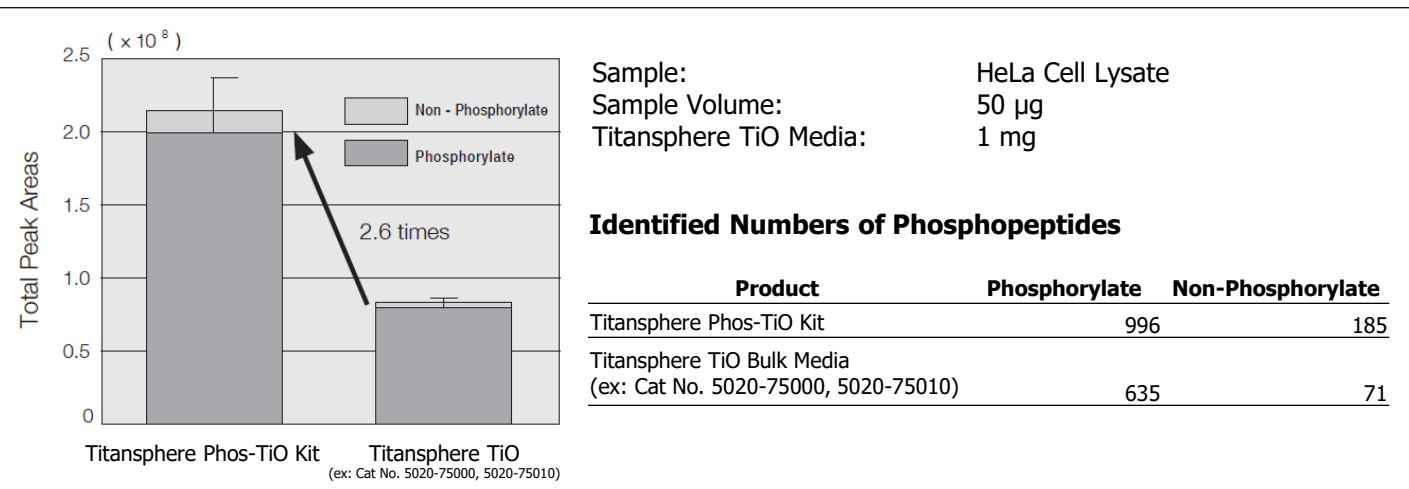
## Phos-TiO Kits Outperform 4 Competitive TiO Based Products (MALDI-TOF/MS)



The data above show the purification efficiency of various TiO based products with a 2.5 μg sample of B-casein digest using MALDI-TOF/MS. Compared to the untreated condition (a), phosphopeptides were selectively purified when using Titansphere Phos-TiO Kit. Compared to competitive products (c to e) Titansphere Phos-TiO Kit showed better selectivity. In general titanium dioxide is said to have the worst adsorption efficiency of multi-phosphopeptides than IMAC. However, Titansphere Phos-TiO Kit showed higher selectivity, sensitivity and number of individual phosphopeptides isolated for 4 – phosphopeptides than IMAC (f). Metastable ion is a dephosphorylated peak.

## Comparison between GL Sciences' Previous Version Bulk Media

Optimal TiO beads (Titansphere Phos-TiO Bulk 10um, Cat No. 5010-21315 ) are used for Titansphere Phos-TiO Kit. The existing Titansphere TiO bulk media were improved for better adsorption capacity of phosphopeptides. Compared to the existing Titansphere bulk media (ex: Cat No. 5020-75000, 5020-75010), Phos-TiO Kit showed 2.6 times more peak area and 1.6 times more identified phosphopeptides.



## Ordering Information

### Titansphere™ Phos-TiO Kit

- Centrifuge Adapter, 24 pcs/pk (Cat. No. 5010-21514) must be purchased once to use the Titansphere Phos-TiO Kit.
- This centrifuge adapter is reusable.
- Lactic acid is Solution B, which is already included in the kit, however, can be purchased separately for future requirements.

| Description   | Sorbent Mass/Tip Volume | Quantity | Cat. No.   |
|---|-------------------------|----------|------------|
| Titansphere Phos-TiO Kit  | 1 mg / 10 µL            | 24 pcs   | 5010-21309 |
|   |                         | 96 pcs   | 5010-21310 |
| Titansphere Phos-TiO Kit  | 3 mg / 200 µL           | 24 pcs   | 5010-21311 |
|   |                         | 96 pcs   | 5010-21312 |
| Centrifuge Adapter  | -                       | 24 pcs   | 5010-21514 |
| Lactic acid for Titansphere Phos-TiO (This is Solution B included in the kit) | 15 mL                   | 1/pk     | 5010-21295 |

### Titansphere Phos-TiO Spin Tips

- Spin tips are also available separately.

| Description                    | Sorbent Mass/Tip Volume | Quantity | Cat. No.   |
|--------------------------------|-------------------------|----------|------------|
| Titansphere Phos-TiO Spin Tips | 1 mg / 10 µL            | 24 pcs   | 5010-21302 |
|                                |                         | 96 pcs   | 5010-21303 |
|                                | 3 mg / 200 µL           | 24 pcs   | 5010-21307 |
|                                |                         | 96 pcs   | 5010-21308 |

# Titansphere™ Phos-TiO for Large Volume Samples



## Titansphere™ Phos-TiO for Large Volume Samples

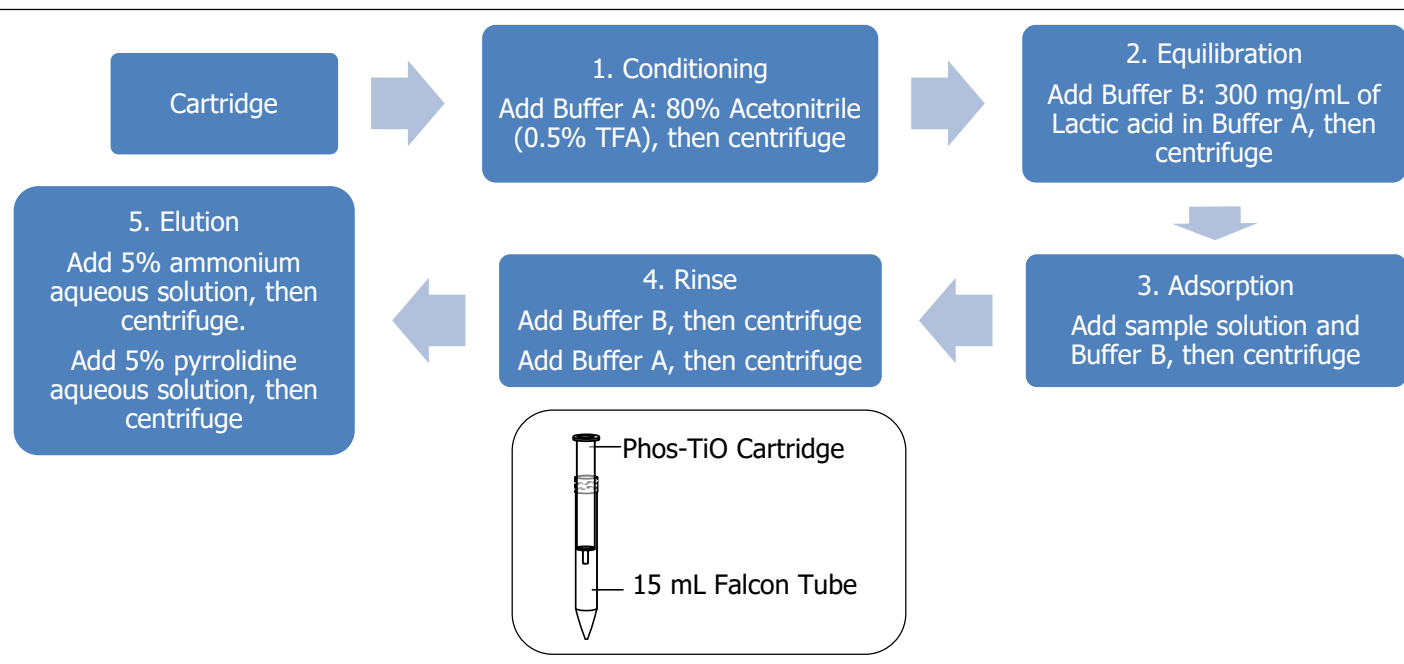
### Appropriate for Larger Scale/Volume Purifications

The same specialized bulk media used in our Phos-TiO Kit is available in 50 mg/3 mL and 100 mg/3 mL cartridges as an extension of the Phos-TiO product line.

### Sample Loading Capacity

| Description                      | Content   |              |
|----------------------------------|---|--------------|
| Sample                           | Tyr(PO <sub>3</sub> H <sub>2</sub> ) - Angiotensin II |              |
| Spin Tip Sorbent Mass/Tip Volume | 50 mg/3 mL  | 100 mg/ 3 mL |
| Sample Loading Capacity          | 50 µg   | 100 µg       |

### Typical Enrichment Protocol using Titansphere Phos-TiO for Large Volume Samples



Phos-TiO for Large Volume Samples Cartridges are intended for use with a desktop or other centrifuge. While some of the versions of Phos-TiO resemble pipette tips or SPE cartridges, these products are not intended for use with pipettes or SPE vacuum manifolds; the cartridge internal configuration and particle size of the TiO bulk media requires centrifugal elution of all solutions.

### Ordering Information

#### Titansphere™ Phos-TiO for Large Volume Samples

| Description              | Sorbent Mass/Tip Volume | Qty    | Cat. No.   |
|--------------------------|-------------------------|--------|------------|
| Titansphere Phos-TiO     | 50 mg/3 mL              | 25 pcs | 5010-21290 |
| for Large Volume Samples | 100 mg/3 mL             | 25 pcs | 5010-21291 |

## GL-Tip SDB and GL-Tip GC

### Desalting Phosphopeptide-Enriched Samples Prior to LC-MS/MS

Phosphopeptides isolated using TiO<sub>2</sub>-based medias are typically desalted prior to analysis by LC-MS/MS, typically using a C18 (hydrophobic) micropipette tip. GL Sciences' SDB (styrene divinylbenzene) and GC (graphite carbon) centrifuge-operated micropipette GL-Tip retain more hydrophobic and hydrophilic peptides, respectively, than C18-based tips.

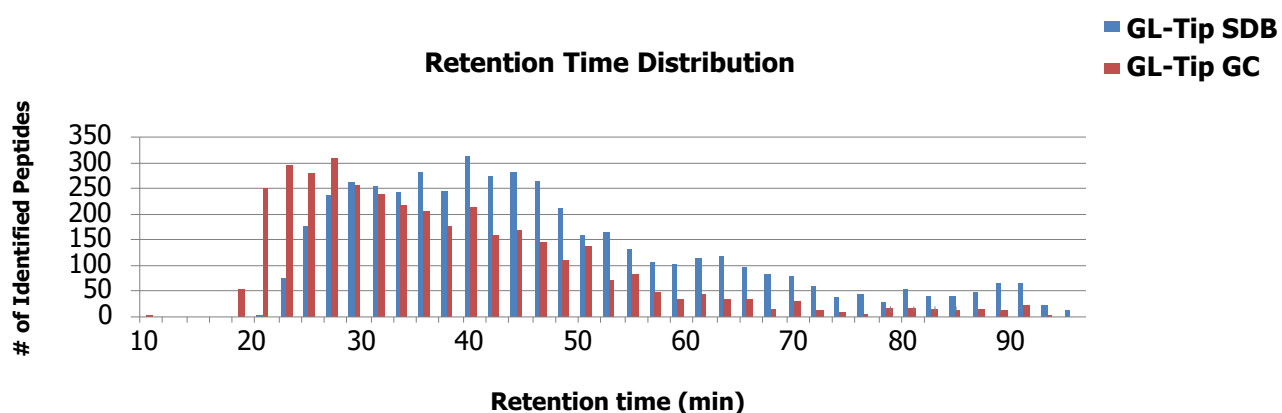
### Features

GL-Tip SDB are more hydrophobic than C18 medias and allow retention of a wider range of phosphopeptides with high yield, allowing more accurate analysis of phosphopeptides species present in the sample. GL-Tip GC retain many more hydrophilic phosphopeptides than does C18; by using a combination of GL-Tip SDB and GC, almost all peptide samples can be desalted without sample losses due to lack of retention. Another highlight of this product is, the operation is very easy-to-use. Phosphopeptide-enriched samples are easily loaded, washed, and eluted using the same centrifuge-based technique used with Phos-TiO spin tips.

### Sample Loading Capacity

| Description                      | GL-Tip SDB  | GL-Tip GC       |
|----------------------------------|---|-----------------|
| Sample                           | Tyr(PO <sub>3</sub> H <sub>2</sub> ) - Angiotensin II | Gly-Gly-Tyr-Arg |
| Spin Tip Sorbent Mass/Tip Volume | 200 µL  | 1 mg/200 µL     |
| Sample Loading Capacity          | 60 µg   | 30 µg           |

### Relative Retention of Peptides Collected using GL-Tip SDB and GC Desalting Tips

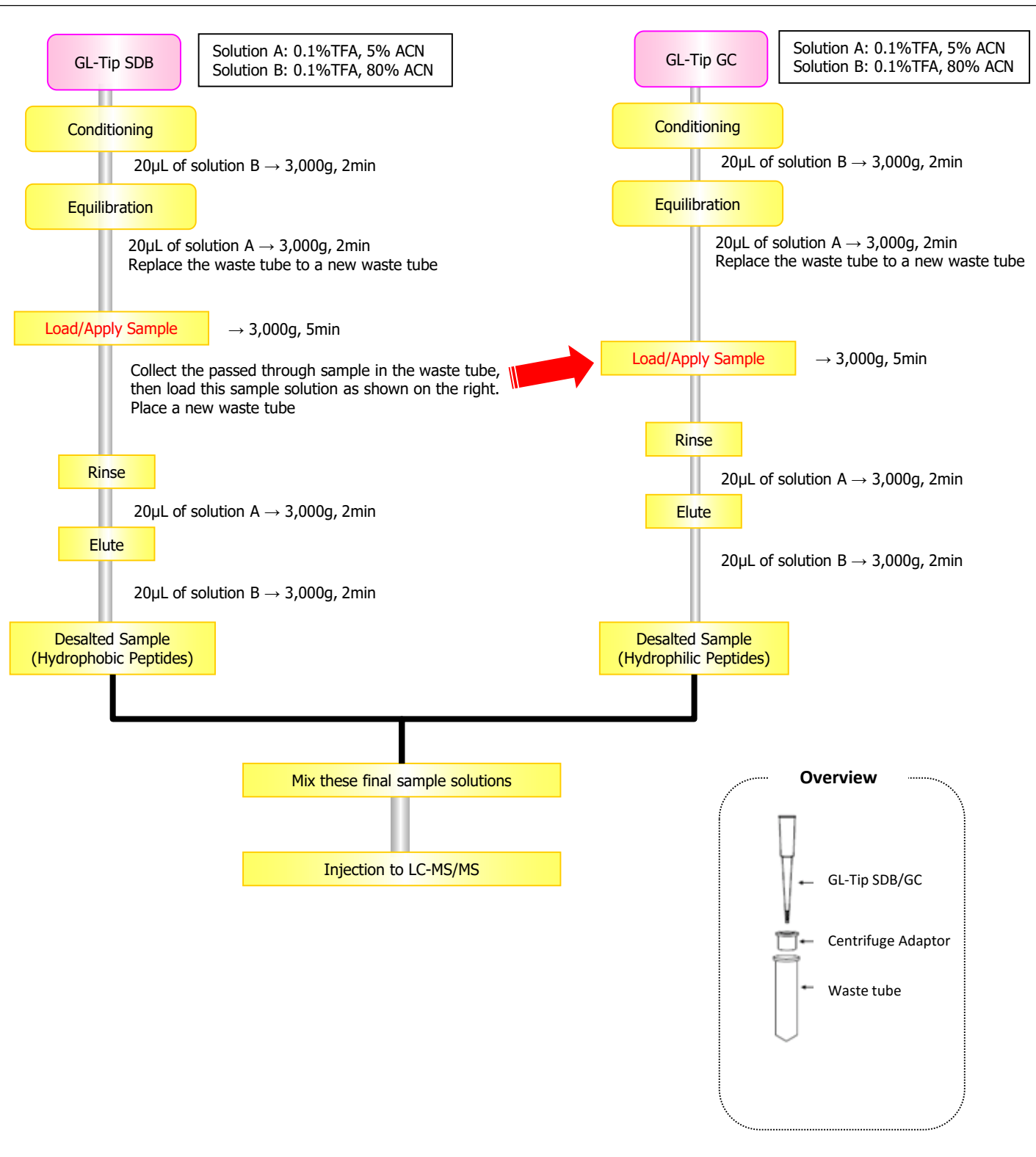


Data provided by Dr. Sugiyama, Keio University

As illustrated above, the data indicating that GL-Tip SDB preferentially binds hydrophobic peptides while GC preferentially binds hydrophilic peptides.

# GL-Tip SDB and GL-Tip GC

## Recommended Protocol using GL-Tip SDB and GL-Tip GC



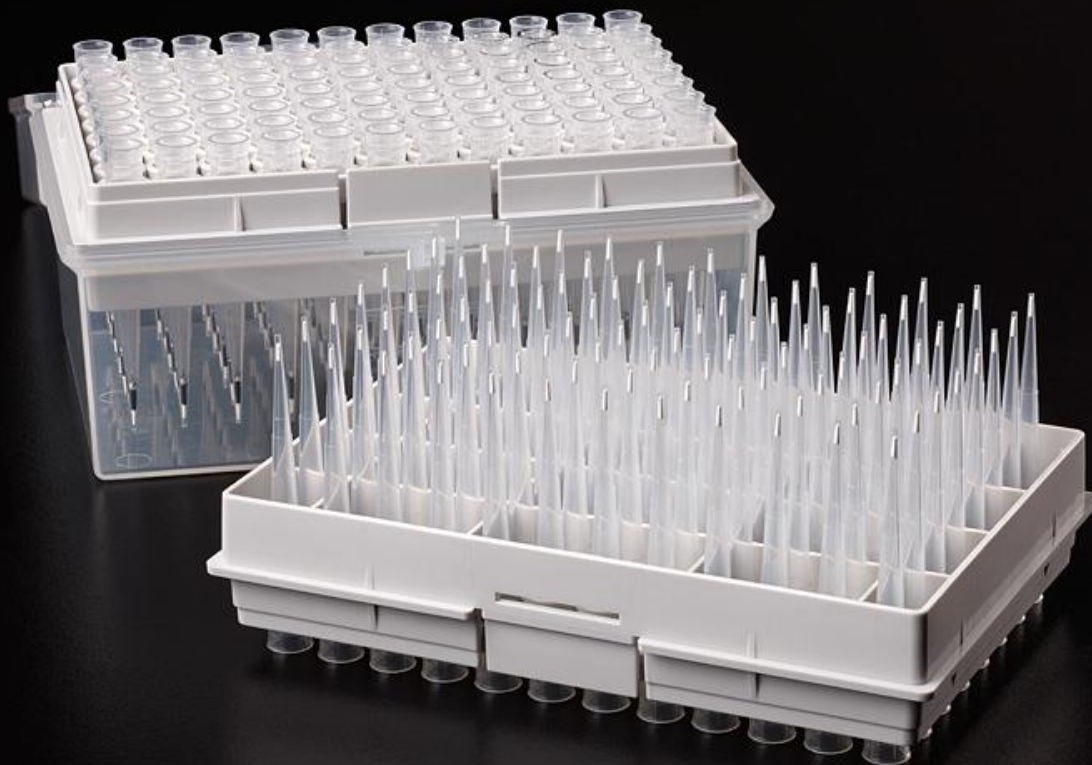


## Ordering Information

### GL-Tip SDB and GL-Tip GC

- Centrifuge Adapter, 24 pcs/pk (Cat. No. 5010-21514) must be purchased once to use the GL-Tip SDB and GL-Tip GC desalting spin tips.
- This centrifuge adapter is reusable.

| Description        | Tip Volume | Qty    | Cat. No.   |
|--------------------|------------|--------|------------|
| GL-Tip SDB         | 200 µL     | 96 pcs | 7820-11200 |
| GL-Tip GC          | 200 µL     | 96 pcs | 7820-11201 |
| Centrifuge Adapter | -          | 24 pcs | 5010-21514 |



## GL-Tip SCX and GL-Tip SDB-SCX

### Spin Tips for Peptide Fractionation

GL-Tip SCX is packed with strong cation polymer (SCX) and GL-Tip SDB-SCX are packed with styrene divinylbenzene polymer (SDB) and strong cation polymer (SCX). GL-Tip SDB-SCX is packed in a two layer format consisting an SDB and SCX media. Undesalted peptide samples can be used in GL-Tip SDB-SCX as the first SDB layer can desalt the sample.

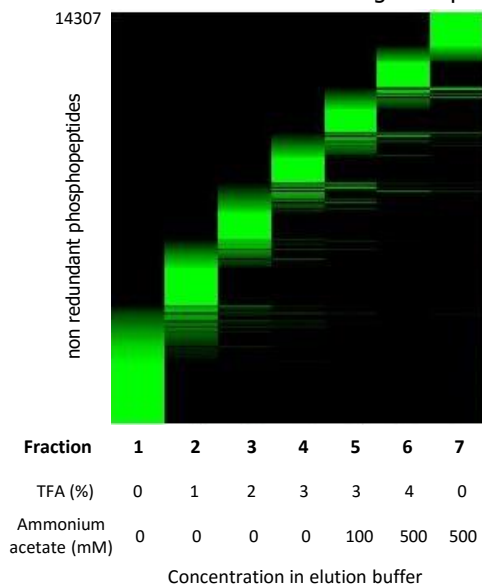
### Sample Loading Capacity

| Description             | GL-Tip SCX     | GL-Tip SDB-SCX |
|-------------------------|----------------|----------------|
| Sample                  | Angiotensin II | Angiotensin II |
| Tip Volume              | 200 µL         | 200 µL         |
| Sample Loading Capacity | 60 µg          | 60 µg          |

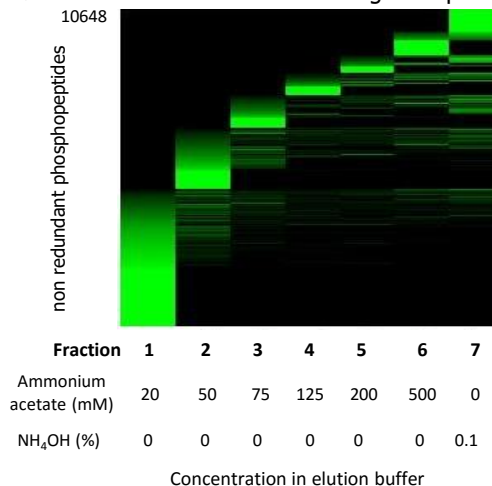
### Comparison of Traditional Gradient Elution vs TFA Gradient Elution

#### Comparison of Efficiency between Traditional Gradient Elution vs TFA Gradient Elution using DLD-1 Human Large Intestinal Cancer Cell derived Phosphopeptides

<NEW TFA Gradient Elution using GL-Tip SDB-SCX>



<Traditional Gradient Elution using GL-Tip SDB-SCX >



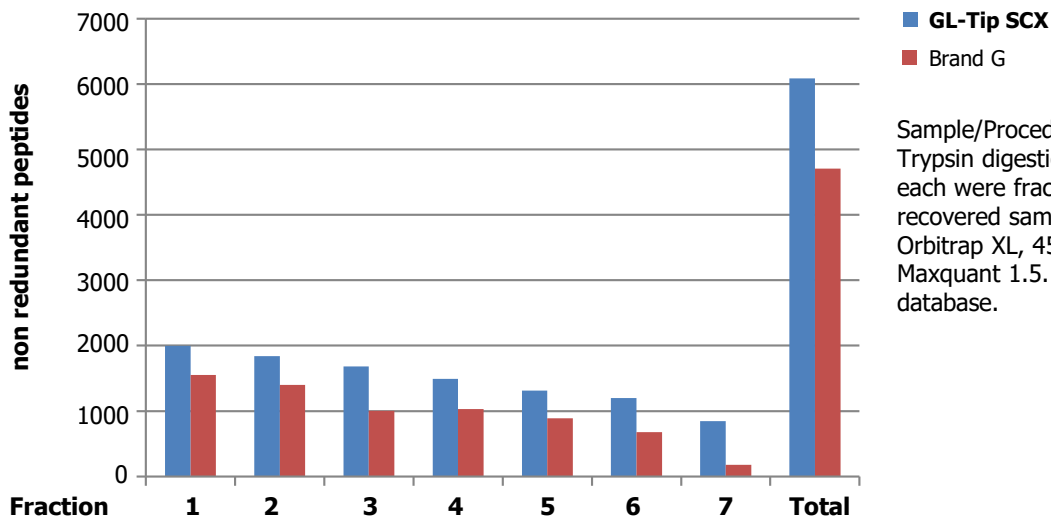
As proven above, the newly developed TFA gradient elution identified 14307 peptides promising higher efficiency than the traditional gradient elution method.

(Data provided from the National Institute of Biomedical Innovation, Dr. Jun Adachi)

A gradient elution using cation SCX media is commonly used in shotgun proteomics to fractionate peptide samples from complex samples such as cell or tissue extracts. The biggest challenge arises when identifying the same peptide from one fractionated peptide sample to another, which results in lowering efficiency. The newly developed TFA gradient elution method (patent applied) identifies more peptides without decreasing operation efficiency.

## Comparison of Number of Quantified Peptides

Compared results between commercially available brand G's tip column. GL-Tip SCX recovered more peptides. The usage of the newly developed TFA gradient elution method provide less chance of identifying the same peptide from one fractionated sample peptide to another resulting in higher efficiency.



Sample/Procedure:  
Trypsin digestion of HeLa cell lysate 25 µg each were fractionated and 40% of the recovered sample were identified via LTQ-Orbitrap XL, 45 minutes gradient using Maxquant 1.5.1.2, uniprot human database.

### Number of Identified Non Redundant Peptides

| Fractions         | 1    | 2    | 3    | 4    | 5    | 6    | 7   | total |
|-------------------|------|------|------|------|------|------|-----|-------|
| <b>GL-Tip SCX</b> | 1996 | 1839 | 1684 | 1491 | 1311 | 1196 | 847 | 6085  |
| Brand G           | 1552 | 1397 | 1004 | 1032 | 890  | 676  | 179 | 4704  |

(Data provided from the National Institute of Biomedical Innovation, Dr. Jun Adachi)

## Ordering Information

### GL-Tip SCX and GL-Tip SDB-SCX

- Centrifuge Adapter, 24 pcs/pk (Cat. No. 5010-21514) must be purchased once to use the GL-Tip SCX and GL-Tip SDB-SCX peptide fractionation spin tips.
- This centrifuge adapter is reusable.

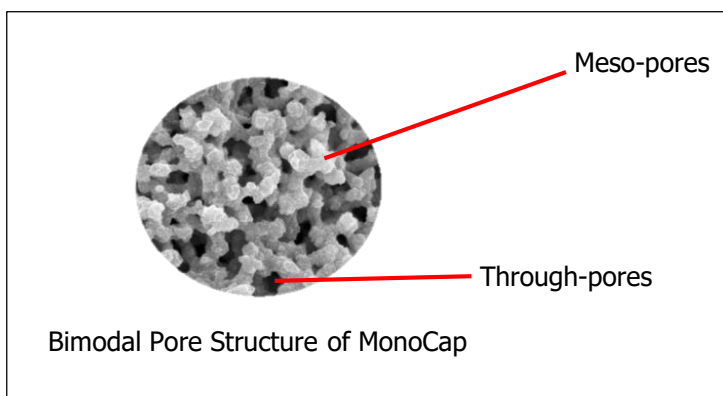
| Description                          | Tip Volume | Qty    | Cat. No.   |
|--------------------------------------|------------|--------|------------|
| GL-Tip SCX                           | 200 µL     | 96 pcs | 7510-11203 |
| GL-Tip SDB-SCX                       | 200 µL     | 96 pcs | 7510-11202 |
| Centrifuge Adapter                   | -          | 24 pcs | 5010-21514 |
| Centrifuge Adapter for 96-Well Plate | -          | 1/pk   | 5010-21341 |
| Centrifuge Adapter for 96-Well Plate | -          | 2 pcs  | 5010-21343 |



# MonoCap HighResolution 2000 Series

## MonoCap HighResolution 2000 Series

### Optimized for Identification of Peptides/Proteins for Proteome Research



MonoCap HighResolution 2000 is a 2 meter length monolithic silica capillary column which is designed for identifying extremely high number of peptides/proteins for proteome research via LC-MS/MS.

GL Sciences' MonoCap capillary columns, created synthetically via sol-gel method, and an octadecyl silane chemically bonded, has a very uniform three dimensional structure that shows excellent reproducibility from batch-to-batch. The solid structure of GL Sciences' monolithic silica eliminates the need for frits or filters at the ends of the column, thereby reducing dead volume that might otherwise lead to band broadening or sample recovery.

The high porosity of our monolithic silica allows high flow rates to be used without loss of resolution or creation of high operating pressure. An optimized balance of through-pores and meso-pores provides the critically important combination of efficiency, separation speed, large volume sample-loading, and small volume sample-recovery.

MonoCap HighResolution provide extremely high efficiency, delivering over 200,000 plates for a 2,000 mm length column. The MonoCap HighResolution Ultra type deliver over 300,000 plates.

## Physical Properties

| Product Description                   | Bonded Phase        | Meso-pore | End-capping | Max. Operating Pressure |
|---------------------------------------|---------------------|-----------|-------------|-------------------------|
| MonoCap C18 HighResolution 2000       | Octadecyl Groups    | 15 nm     | Yes         | 35 MPa                  |
| MonoCap C18 HighResolution Ultra 2000 | Octadecyl Groups    | 11 nm     | Yes         | 35 MPa                  |
| MonoCap HILIC-UP HighResolution 2000  | Ureidopropyl Groups | 12 nm     | None        | 35 MPa                  |

Based on monolithic technology, Merck KGaA, Darmstadt, Germany.



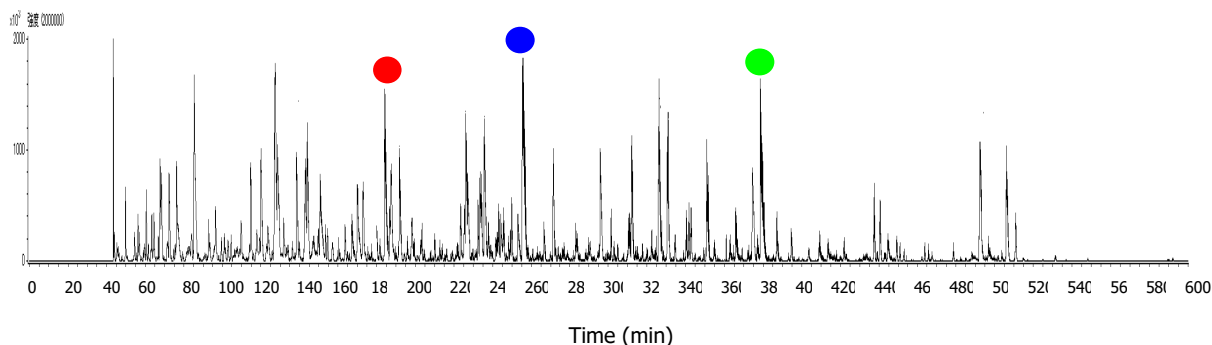
## Discover New Peptides/Proteins

As proven below, MonoCap C18 HighResolution 2000 mm length column identifies simply more peptides/proteins compared to those traditional particle packed capillary HPLC columns.

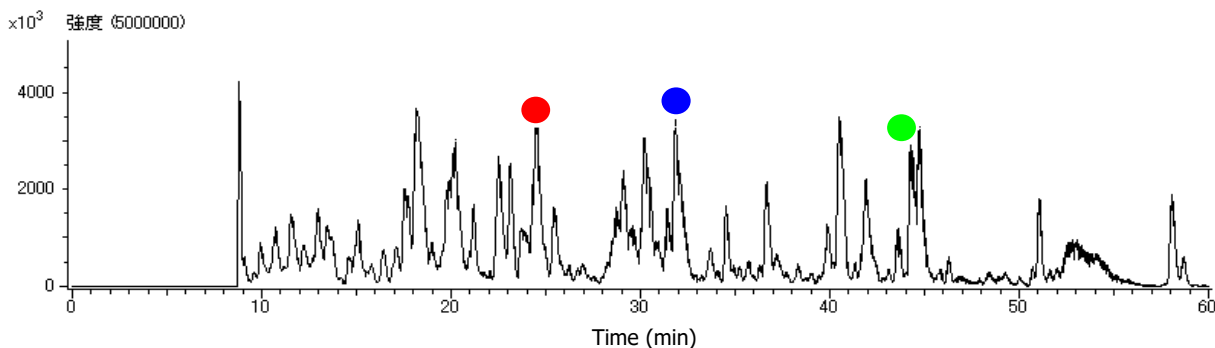
**MS:** LTQ-Orbitrap XL (Mascot Search)  
**Sample:** THP-1 Cell Lysate Tryptic Digest, 5 µg

| Column Name  | Number of Identified Proteins in average | Analysis Time   |
|--|--|-----------------|
| <b>MonoCap C18 HighResolution 2000<br/>0.1 mm I.D. x 2000 mm</b> | <b>2,087<br/>(2013, 2116, 2131)</b>      | <b>10 Hours</b> |
| Particle packed column<br>0.1 mm I.D. x 150 mm                   | 680<br>(685, 679, 675)                   | 2 Hours         |

### [1] MonoCap C18 HighResolution 2000 (2000 mm x 0.1 mm I.D.)



### [2] Particle Packed column (3 µm, 150 mm x 0.075 mm I.D.)



#### Conditions

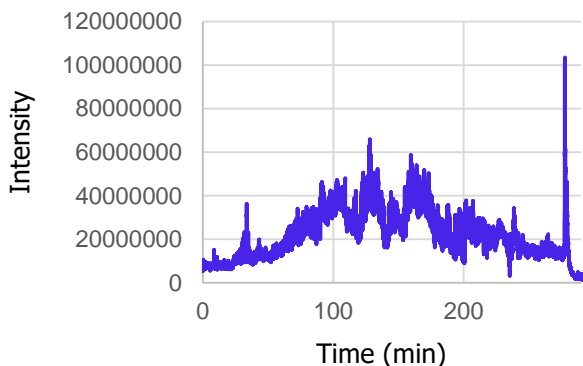
|             |  |                 |                                    |
|-------------|--|-----------------|------------------------------------|
| System      | : GLS Capillary HPLC system  | Flow Rate       | : [1] 0.5 µL/min<br>[2] 0.3 µL/min |
| Column      | : [1] MonoCap C18 High Resolution 2000 (2000 mm x 0.1 mm I.D.)<br>[2] Particle packed column (3 µm, 150 mm x 0.075 mm I.D.)                                      | Injection Vol.: | : 5 µL                             |
| Trap column | : MonoCap C18 Trap Column (50 mm x 0.075 mm I.D.)  | Detection       | : MS (TIC m / z 500-1500)          |
| Eluent      | : A) 0.1 %HCOOH in CH <sub>3</sub> CN<br>B) 0.1 %HCOOH in H <sub>2</sub> O<br>[1] A / B = 10 / 90 - 600 min - 45 / 55<br>[2] A / B = 10 / 90 - 180 min - 45 / 55 | Sample          | : Tryptic digest of proteins       |

● ● ● are analytes having the same molecular weight

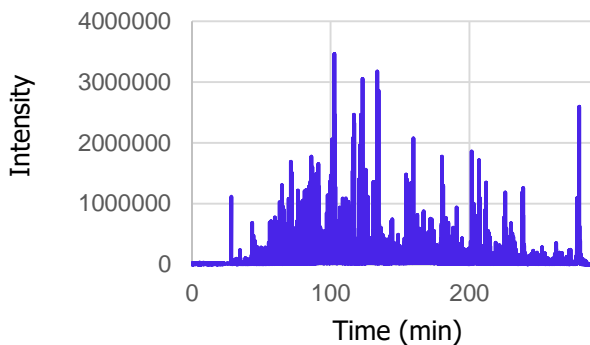
## For Identifying Highly Hydrophilic, Hydrophobic Peptides/Proteins

MonoCap HILIC-UP is an important addition to the MonoCap C18 HighResolution 2000 column series. MonoCap HILIC-UP can retain highly hydrophilic peptides/proteins which may lead to discovering new peptides/proteins where a C18 phase couldn't identify.

In HILIC, the higher the organic concentration, the greater the retention of more polar analytes. One of the biggest benefit of HILIC mode is, a high organic solvent concentration of the mobile phase will lead to a high sensitivity LC-MS/MS analysis.



Total Ion Chromatogram



Base Peak Chromatogram

### Remarks:

**Results of MonoCap C18 HighResolution 2000**

**Number of Identified Peptides: 8,358**

**Number of Identified Proteins: 1,992**

**Gradient Program: 4 hrs**

**Results of MonoCap HILIC-UP HighResolution 2000**

**Number of Identified Peptides: 7,194 (14,736 PSM\*)**

**Number of Identified Proteins: 2,201**

**\* Peptide Spectrum Match**

### Conditions

Column : MonoCap HILIC-UP High Resolution 2000  
Eluent : A) CH<sub>3</sub>CN : H<sub>2</sub>O=10/90 (0.5% CH<sub>3</sub>COOH)  
B) CH<sub>3</sub>CN : H<sub>2</sub>O=95/5 (0.5% CH<sub>3</sub>COOH)  
A/B=0/100-(240 min)-20/80-(10 min)-100/0-(10 min)-100/0  
Flow Rate : 0.5  $\mu$ L  
Injection Vol. : 1  $\mu$ L (1 mg/mL)  
Detection : TIC MS (m/z 300-1500)  
Sample : Tryptic Digest of Hela Cell Lysate, 5  $\mu$ g

### Reference:

**Hydrophilic Interaction Chromatography Using a Meter-Scale Monolithic silica capillary Column for Proteomics LC-MS,**  
**K Horie et al. *Anal. Chem.* 2014, 86, 3817-3824**

## References

---

1. M.H.M. van de Meent et al.  
Improvement of the liquid-chromatographic analysis of protein tryptic digests by the use of long-capillary monolithic columns with UV and MS detection, *Anal Bioanal Chem*, 2007,388, 195-200
2. Mio Iwasaki et al.  
One-Dimensional Capillary Liquid Chromatographic Separation Coupled with Tandem Mass Spectrometry Unveils the Escherichia coli Proteome on a Microarray Scale, *Anal. Chem.* 2010, 82, 2616-2620
3. Mio Iwasaki et al.  
Human Proteome analysis by using reversed phase monolithic silica capillary columns with enhanced sensitivity, *J Chromatogr A* 2012, 1228, 292-297
4. Ryota Yamana et al.  
Rapid and deep profiling of human induced pluripotent stem cell proteome by one-shot NanoLC-MS/MS analysis with meter-scale monolithic silica columns, *J Proteome Res.* 2013, 12, 214-21
5. Mari Ogawa-Ohnishi et al.  
Identification of three hydroxyproline O-arabinosyltransferases in *Arabidopsis thaliana*, *Nature Chem. Biol.* 2013, 9, 726-730
6. Satoru Okamoto et al.  
Root-derived CLE glycopeptides control nodulation by direct binding to HAR1 receptor kinase, *Nature Commun.* 2013,4, 2191
7. Kanta Horie et al.  
Hydrophilic interaction chromatography using a meter-scale monolithic silica capillary column for proteomics LC-MS, *Anal. Chem.* 2014, 86, 3817-3824

# MonoCap HighResolution 2000 Series

## Ordering Information

### MonoCap C18 HighResolution Ultra 2000

- End-fittings are not included.
- A column connection kit is available separately to ensure proper connections.
- Please refer to the below ordering information.

| Description                           | I.D. (mm) | Length (mm) | Qty  | Cat. No.   |
|---------------------------------------|-----------|-------------|------|------------|
| MonoCap C18 HighResolution Ultra 2000 | 10 µm     | 2000        | 1/pk | 5020-10018 |

### MonoCap C18 HighResolution 2000

- End-fittings are not included.
- A column connection kit is available separately to ensure proper connections.
- Please refer to the below ordering information.

| Description                     | I.D. (mm) | Length (mm) | Qty  | Cat. No.   |
|---------------------------------|-----------|-------------|------|------------|
| MonoCap C18 HighResolution 2000 | 10 µm     | 2000        | 1/pk | 5020-10015 |

### MonoCap HILIC-UP HighResolution 2000

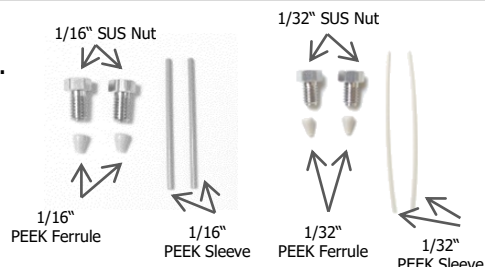
- End-fittings are not included.
- A column connection kit is available separately to ensure proper connections.
- Please refer to the below ordering information.

| Description                          | I.D. (mm) | Length (mm) | Qty  | Cat. No.   |
|--------------------------------------|-----------|-------------|------|------------|
| MonoCap HILIC-UP HighResolution 2000 | 10 µm     | 2000        | 1/pk | 5020-10019 |

### Connection Kit for MonoCap HighResolution 2000

- A dedicated connection kit for MonoCap C18 High Resolution 2000.
- Use this connection kit when connecting the column directly to the system.

| Description                                      | Qty  | Cat. No.   |
|--|------|------------|
| 1/16" PEEK Ferrule, SUS Nut, Sleeve, 2 pcs each. | 1/pk | 5020-10017 |
| 1/32" PEEK Ferrule, SUS Nut, Sleeve, 2 pcs each. |      |            |



### Zero Dead Volume Union

- Connect the tubing from the system to this union and install the column to achieve zero dead volume.

| Description | Orifice Size | Qty  | Cat. No.   |
|-------------|--------------|------|------------|
| U-435       | 0.25 mm      | 1/pk | 6010-72352 |
| U-411       | 178 µm       | 1/pk | 6010-72351 |





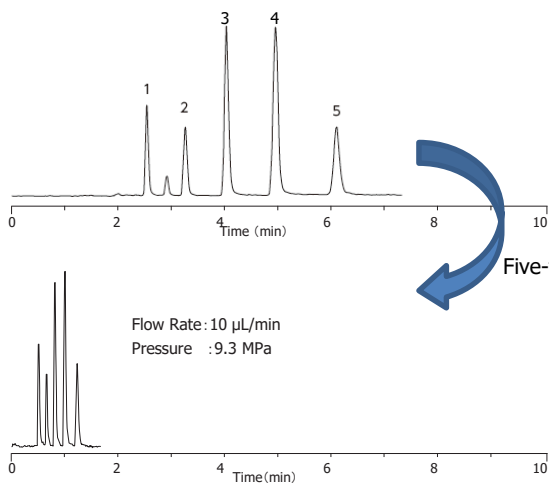
# MonoCap C18 Fast-Flow

## Physical Properties

| Product Description   | Bonded Phase     | Meso-pore | End-capping | Max. Operating Pressure |
|-----------------------|------------------|-----------|-------------|-------------------------|
| MonoCap C18 Fast-flow | Octadecyl Groups | 15 nm     | Yes         | 22 MPa                  |

Workable at a broad range of linear velocity from 0.5 to 5 mm/s without sacrificing efficiency and separation at high speed. The number of theoretical plates produced by MonoCap C18 Fast-Flow is nearly equivalent to a totally porous particle type capillary column packed with a 5  $\mu\text{m}$  packing material. Columns are protected by either metal or PEEK hardware.

### Workable at High Flow Rates without Sacrificing Efficiency



#### Conditions

Column : MonoCap C18 for Fast-flow  
(150  $\times$  0.2 mm I.D.)  
Eluent : A)  $\text{CH}_3\text{CN}$  B)  $\text{H}_2\text{O}$   
A/B=50/50 ,v/v  
Col.Temp. : Ambient  
Detection : UV 210 nm (MU701, Cell Volume 18 nL)  
Injection Vol. : 0.5  $\mu\text{L}$   
Sample : 1. Thiourea  
2. Acetophenone  
3. Benzene  
4. Toluene  
5. Naphthalene



## MonoCap C18 Nano-flow



### Physical Properties

| Product Description   | Bonded Phase     | Meso-pore | End-capping | Max. Operating Pressure |
|-----------------------|------------------|-----------|-------------|-------------------------|
| MonoCap C18 Nano-flow | Octadecyl Groups | 11 nm     | Yes         | 22 MPa                  |

MonoCap C18 Nano-flow produces higher number of theoretical plates compared to a totally porous particle type capillary column packed with a 3  $\mu\text{m}$  packing material. It can be operated at a wide range of flow rate with low back pressure and achieve very high sensitive results in Nano-LC-ESI/MS applications. Columns are protected by either metal or PEEK hardware.

## MonoCap C18 WideBore



### Physical Properties

| Product Description  | Bonded Phase     | Meso-pore | End-capping | Max. Operating Pressure |
|----------------------|------------------|-----------|-------------|-------------------------|
| MonoCap C18 WideBore | Octadecyl Groups | 11 nm     | Yes         | 22 MPa                  |

The MonoCap C18 Fast-flow is also available in 0.5 mm I.D. size, which can be used at a wide range of flow rate from 6 to 100  $\mu\text{L}/\text{min}$  without sacrificing efficiency. The number of theoretical plates produced by MonoCap C18 WideBore is nearly equivalent to a totally porous particle type capillary column packed with a 5  $\mu\text{m}$  packing material. Columns are protected by a metal hardware.

## MonoCap C18 Trap Column

### Physical Properties

| Product Description     | Bonded Phase     | Meso-pore | End-capping | Max. Operating Pressure |
|-------------------------|------------------|-----------|-------------|-------------------------|
| MonoCap C18 Trap Column | Octadecyl Groups | 11 nm     | Yes         | 20 MPa                  |

MonoCap C18 Trap columns have a relatively big throughpore and workable at a high flow rate such as 10  $\mu\text{L}/\text{min}$ . This benefit makes MonoCap C18 Trap columns to be appropriate for on-line preconcentration or desalting of protein and peptide samples prior to HPLC separation with mass spectrometry detection. End-fittings are 1/16" (10-32 UNF), 1/32" end-fittings are also available upon request.



## MonoCap Amide



### Physical Properties

| Product Description | Bonded Phase     | Meso-pore | End-capping | Max. Operating Pressure |
|---------------------|------------------|-----------|-------------|-------------------------|
| MonoCap Amide       | Carbamoyl Groups | 15 nm     | None        | 22 MPa                  |

Amide groups are chemically bonded to the monolithic silica and makes it suitable for the analysis of sugars via HILIC mode. As the back pressure is significantly low, a 500 mm length MonoCap Amide column deliver over 40,000 plates offering high efficiency. Generally, HILIC mode uses acetonitrile at a concentration between 65-95 % in an aqueous buffer such as ammonium acetate or ammonium formate, which have high solubility in organic solvents. Columns are protected by either metal or PEEK hardware.

## MonoCap SCX

### Physical Properties

| Product Description | Bonded Phase           | Meso-pore | End-capping | Max. Operating Pressure |
|---------------------|------------------------|-----------|-------------|-------------------------|
| MonoCap SCX         | Benzenesulfonyl Groups | 11 nm     | None        | 20 MPa                  |

MonoCap SCX is bonded with benzene sulfonic acid groups (strong cation exchange) and appropriate for 2D LC applications for the separation of biomolecules such as peptides and proteins.



## Ordering Information

### MonoCap C18 Fast-Flow

- For end-fittings information, please refer to page 30.
- All 50 mm length PEEK columns does not come with a hardware and will be supplied with 3 pcs of columns only.

| Description           | I.D. (mm) | Length (mm) | Hardware | Qty  | Cat. No.   |
|-----------------------|-----------|-------------|----------|------|------------|
| MonoCap C18 Fast-Flow | 0.05      | 50          | Metal    | 1/pk | 5020-10102 |
|                       |           | 150         |          | 1/pk | 5020-10101 |
|                       |           | 250         |          | 1/pk | 5020-10100 |
|                       |           | 50          | PEEK     | 3/pk | 5020-10002 |
|                       |           | 150         |          | 1/pk | 5020-10001 |
|                       |           | 250         |          | 1/pk | 5020-10000 |
|                       | 0.075     | 50          | Metal    | 1/pk | 5020-10211 |
|                       |           | 150         |          | 1/pk | 5020-10212 |
|                       |           | 250         |          | 1/pk | 5020-10213 |
|                       |           | 50          | PEEK     | 3/pk | 5020-10221 |
|                       |           | 150         |          | 1/pk | 5020-10222 |
|                       |           | 250         |          | 1/pk | 5020-10223 |
|                       | 0.1       | 50          | Metal    | 1/pk | 5020-10112 |
|                       |           | 150         |          | 1/pk | 5020-10111 |
|                       |           | 250         |          | 1/pk | 5020-10110 |
|                       |           | 50          | PEEK     | 3/pk | 5020-10012 |
|                       |           | 150         |          | 1/pk | 5020-10011 |
|                       |           | 250         |          | 1/pk | 5020-10010 |
|                       | 0.2       | 50          | Metal    | 1/pk | 5020-10122 |
|                       |           | 150         |          | 1/pk | 5020-10121 |
|                       |           | 250         |          | 1/pk | 5020-10120 |
|                       |           | 50          | PEEK     | 3/pk | 5020-10022 |
|                       |           | 150         |          | 1/pk | 5020-10021 |
|                       |           | 250         |          | 1/pk | 5020-10020 |

## Ordering Information

### MonoCap C18 Nano-Flow

- For end-fittings information, please refer to page 30.
- All 50 mm length PEEK columns does not come with a hardware and will be supplied with 3 pcs of columns only.

| Description           | I.D. (mm) | Length (mm) | Hardware | Qty        | Cat. No.   |
|-----------------------|-----------|-------------|----------|------------|------------|
| MonoCap C18 Nano-Flow | 0.05      | 50          | Metal    | 1/pk       | 5020-10143 |
|                       |           | 150         |          | 1/pk       | 5020-10141 |
|                       |           | 50          | PEEK     | 3/pk       | 5020-10043 |
|                       |           | 150         |          | 1/pk       | 5020-10041 |
|                       | 0.075     | 50          | Metal    | 1/pk       | 5020-10231 |
|                       |           | 150         |          | 1/pk       | 5020-10232 |
|                       |           | 50          | PEEK     | 3/pk       | 5020-10241 |
|                       |           | 150         |          | 1/pk       | 5020-10242 |
|                       | 0.1       | 50          | Metal    | 1/pk       | 5020-10153 |
|                       |           | 150         |          | 1/pk       | 5020-10151 |
|                       |           | 50          | PEEK     | 3/pk       | 5020-10053 |
|                       |           | 150         |          | 1/pk       | 5020-10051 |
|                       | 0.2       | 50          | Metal    | 1/pk       | 5020-10163 |
|                       |           | 150         |          | 1/pk       | 5020-10161 |
|                       |           | 50          | PEEK     | 3/pk       | 5020-10063 |
| 150                   |           | 1/pk        |          | 5020-10061 |            |

### MonoCap C18 WideBore

- For end-fittings information, please refer to page 30.

| Description          | I.D. (mm) | Length (mm) | Hardware      | Qty  | Cat. No.   |
|----------------------|-----------|-------------|---------------|------|------------|
| MonoCap C18 WideBore | 0.5       | 50          | Metal<br>only | 1/pk | 5020-10202 |
|                      |           | 150         |               | 1/pk | 5020-10201 |
|                      |           | 250         |               | 1/pk | 5020-10200 |

## Ordering Information

### MonoCap C18 Trap Column

- For end-fittings information, please refer to page 30.

| Description             | I.D. (mm) | Length (mm)      | Hardware         | Qty        | Cat. No.   |
|-------------------------|-----------|------------------|------------------|------------|------------|
| MonoCap C18 Trap Column | 0.05      | 50               | With Hardware    | 1/pk       | 5020-10026 |
|                         |           | 100              |                  | 1/pk       | 5020-10038 |
|                         |           | 150              |                  | 1/pk       | NA         |
|                         |           | 50               | Without Hardware | 1/pk       | 5020-10027 |
|                         |           | 100              |                  | 1/pk       | 5020-10039 |
|                         |           | 150              |                  | 1/pk       | NA         |
|                         | 0.075     | 50               | With Hardware    | 1/pk       | 5020-10028 |
|                         |           | 100              |                  | 1/pk       | 5020-10036 |
|                         |           | 150              |                  | 1/pk       | NA         |
|                         |           | 50               | Without Hardware | 1/pk       | 5020-10029 |
|                         |           | 100              |                  | 1/pk       | 5020-10037 |
|                         |           | 150              |                  | 1/pk       | NA         |
|                         | 0.2       | 50               | With Hardware    | 1/pk       | 5020-10033 |
|                         |           | 100              |                  | 1/pk       | NA         |
|                         |           | 150              |                  | 1/pk       | NA         |
| 50                      |           | Without Hardware | 1/pk             | 5020-10034 |            |
| 100                     |           |                  | 1/pk             | NA         |            |
| 150                     |           |                  | 1/pk             | 5020-10031 |            |

### MonoCap Amide

- For end-fittings information, please refer to page 30.

| Description   | I.D. (mm) | Length (mm) | Hardware | Qty        | Cat. No.   |
|---------------|-----------|-------------|----------|------------|------------|
| MonoCap Amide | 0.075     | 150         | Metal    | 1/pk       | 5020-10191 |
|               |           | 250         |          | 1/pk       | 5020-10192 |
|               |           | 500         |          | 1/pk       | 5020-10193 |
|               |           | 150         | PEEK     | 1/pk       | 5020-10091 |
|               |           | 250         |          | 1/pk       | 5020-10092 |
|               |           | 500         |          | 1/pk       | 5020-10093 |
|               | 0.1       | 150         | Metal    | 1/pk       | 5020-10181 |
|               |           | 250         |          | 1/pk       | 5020-10182 |
|               |           | 500         |          | 1/pk       | 5020-10183 |
|               |           | 150         | PEEK     | 1/pk       | 5020-10081 |
|               |           | 250         |          | 1/pk       | 5020-10082 |
|               |           | 500         |          | 1/pk       | 5020-10083 |
|               | 0.2       | 150         | Metal    | 1/pk       | 5020-10171 |
|               |           | 250         |          | 1/pk       | 5020-10172 |
|               |           | 500         |          | 1/pk       | 5020-10173 |
| 150           |           | PEEK        | 1/pk     | 5020-10071 |            |
| 250           |           |             | 1/pk     | 5020-10072 |            |
| 500           |           |             | 1/pk     | 5020-10073 |            |

## Ordering Information

### MonoCap SCX

- For end-fittings information, please refer to the following information.

| Description | I.D. (mm) | Length (mm) | Hardware | Qty  | Cat. No.   |
|-------------|-----------|-------------|----------|------|------------|
| MonoCap SCX | 0.2       | 50          | Metal    | 1/pk | 5020-10174 |
|             |           | 150         |          | 1/pk | 5020-10175 |
|             |           | 250         |          | 1/pk | 5020-10176 |
|             |           | 500         |          | 1/pk | 5020-10177 |
|             |           | 50          | PEEK     | 1/pk | 5020-10074 |
|             |           | 150         |          | 1/pk | 5020-10075 |
|             |           | 250         |          | 1/pk | 5020-10076 |
|             |           | 500         |          | 1/pk | 5020-10077 |

### End-fittings of MonoCap Monolithic Capillary HPLC Columns

| Description  | End-fittings Details   |
|--|--|
| MonoCap C18 Fast-flow<br>MonoCap C18 Nano-flow<br>MonoCap C18 WideBore<br>MonoCap Amide<br>MonoCap SCX | 1. Metal Hardware Type<br>End-fittings are Valco 1/16" (10-32 UNF).<br>Valco 1/32" (6-40 UNF) end-fittings can also be arranged upon request, indicate "1/32" when ordering. |
|  | 2. PEEK Hardware Type<br>1/16" male nut, ferrule and PTFE sleeve are included.   |

### Connection Kit for MonoCap C18 Trap Column

| Description  | Cat. No.   |
|--|------------|
| MonoCap C18 Trap Column Connection Kit 1/16"<br>(Union·Sleeve·Capillary Tubing 2 pcs each, Nut·Ferrule 4 pcs each) | 5020-10044 |
| MonoCap C18 Trap Column Connection Kit 1/32"<br>(Union·Sleeve·Capillary Tubing 2 pcs each, Nut·Ferrule 4 pcs each) | 5020-10045 |
| MonoCap C18 Trap Column Assembly Parts 1/16"<br>(Nut·Ferrule 4 pcs each)   | 5020-10046 |
| MonoCap C18 Trap Column Assembly Parts 1/32"<br>(Nut·Ferrule 4 pcs each)   | 5020-10047 |



## MonoSpray

### Monolithic Electrospray Emitter for ESI-LC/MS

MonoSpray is an electrospray emitter for ESI-LC/MS which a monolithic packing is packed into a fused silica sprayer offering numbers of benefits compared to those traditional sprayers packed with particle based packings. Frits are not installed in MonoSpray to keep the monolithic packing in place, which results in offering simply longer lifetime and avoiding bed splitting problems compared to those traditional sprayers packed with particle based packings. The very high porosity of monolithic packing allows a wide range of operational flow rates, even at high flow rates.

### Features

- High Sensitivity Analysis
- High Chemical Stability
- High Physical Stability
- Wide Range of Operational Flow Rates

### Ordering Information

#### MonoSpray FS

- For online Nano-ESI-LC/MS.

| Description  | Length (mm) | O.D. (µm) | I.D. (µm) | Qty    | Optimum Flow Rate | Cat. No.   |
|--------------|-------------|-----------|-----------|--------|-------------------|------------|
| MonoSpray FS | 50          | 370       | 50        | 5 pcs  | 0.1 - 1.0 µL/min  | 5010-20001 |
|              |             |           |           | 20 pcs |                   | 5010-20006 |
|              |             |           | 75        | 5 pcs  | 0.2 - 2.0 µL/min  | 5010-20002 |
|              |             |           |           | 20 pcs |                   | 5010-20007 |
|              |             |           | 100       | 5 pcs  | 1.0 - 5.0 µL/min  | 5010-20003 |
|              |             |           |           | 20 pcs |                   | 5010-20008 |

Please inquire for other sizes.

#### MonoSpray C18 Nano

- Nano sprayer packed with octadecylated silica monolith offering reversed phased separation.

| Description        | Length (mm) | O.D. (µm) | I.D. (µm) | Qty   | Optimum Flow Rate | Cat. No.   |
|--------------------|-------------|-----------|-----------|-------|-------------------|------------|
| MonoSpray C18 Nano | 50          | 370       | 50        | 1 pcs | 0.1 - 0.5 µL/min  | 5010-20011 |
|                    |             |           |           | 4 pcs |                   | 5010-20016 |
|                    |             |           | 75        | 1 pcs | 0.1 - 1.0 µL/min  | 5010-20012 |
|                    |             |           |           | 4 pcs |                   | 5010-20017 |
|                    |             |           | 100       | 1 pcs | 0.3 - 2.0 µL/min  | 5010-20013 |
|                    |             |           |           | 4 pcs |                   | 5010-20018 |

Please inquire for other sizes.

Based on monolithic technology, Merck KGaA, Darmstadt, Germany.



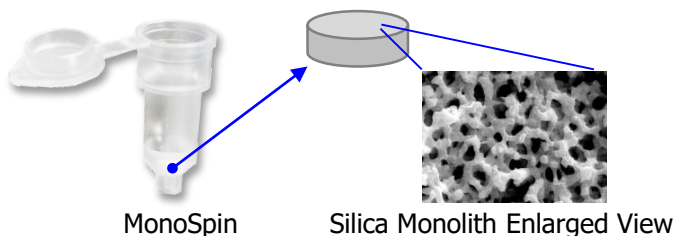
# MonoSpin Series

## Low-Molecular Compounds Extraction and Purification

The low-pressure, high-flow, and low-liquid-retention properties of GL Sciences' monolith silica technology make it uniquely suited for handling of small samples. MonoSpin SPE centrifugal spin columns have been developed to improve concentration and yields in low-volume sample preparation.

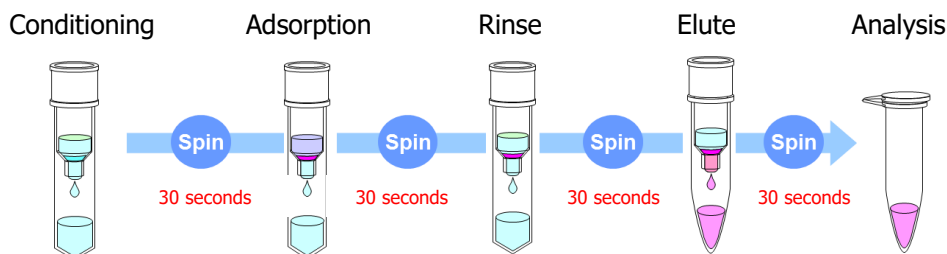
### Features

- Easy-to-Operate
- Ideal for Small Sample Volumes
- Wide Variety of Functional Groups
- Rapid Operation Time

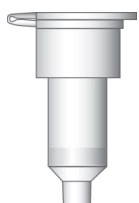


### How to Operate

Centrifuge elution allows loss-free and efficient processing of many samples simultaneously, with little or no liquid retained by the separation matrix. And, excellent mass transfer and rapid sample binding on MonoSpin's monolith silica allows extremely rapid sample preparation compared with other methods.



### Formats



#### S Type (Small)

- Disc Size :  $\phi$  4.2 x 1.5 mm
- Sample Volume : 50 ~ 800  $\mu$ L
- Elution Volume : 50 ~ 800  $\mu$ L
- Centrifugation Speed : 2,000 ~ 10,000 x *g*



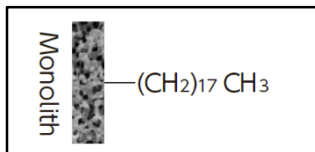
#### L Type (Large)

- Disc Size :  $\phi$  9 x 3 mm
- Sample Volume : 0.5 ~ 8 mL
- Elution Volume : 0.5 ~ 8 mL
- Centrifugation Speed : 1,000 x *g*

## Product Lineup

### MonoSpin C18/C18 FF

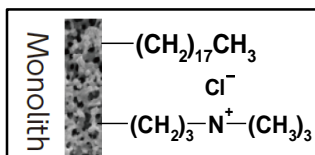
Formats: S L



Octadecyl functional group. Optimal for drug extraction in biological samples, and desalting & enrichment of peptide samples C18 FF type employs large through-pore monolith silica for high viscosity samples.

### MonoSpin C18-AX

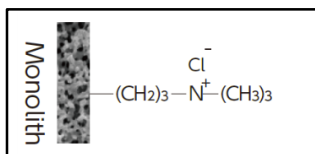
Formats: S



Bonded with octadecyl and trimethylaminopropyl, a mix mode type. Delivers great retention for high salt concentrated serum samples. Optimal for the recovery of acidic drugs.

### MonoSpin SAX

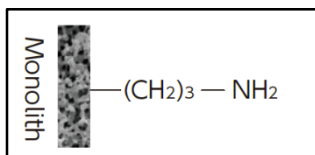
Formats: S L



Bonded with trimethylaminopropyl combining both strong anion exchange & weak hydrophobic interaction. Optimal for the extraction of acidic drugs.

### MonoSpin NH2

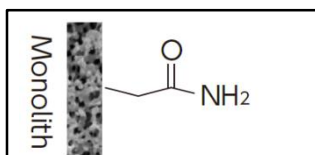
Formats: S L



Bonded with aminopropyl. Optimal for the enrichment of sugar chain and/or hydrophilic compounds by HILIC mode.

### MonoSpin Amide

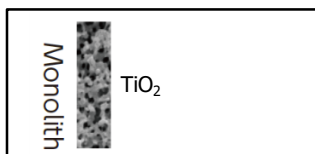
Formats: S



Bonded with amide. Optimal for the extraction of sugar chains and various hydrophilic acidic and basic compounds by HILIC mode.

### MonoSpin TiO

Formats: S



Monolith skeleton coated with titanium dioxide. Excellent for the enrichment of phosphopeptides.

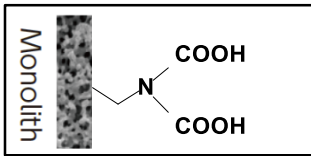
S: Small Type    L: Large Type

Product Lineup

MonoSpin ME

Formats: S L

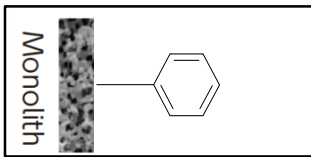
Bonded with iminodiacetic acid. Optimal for the recovery of trace metals.



MonoSpin Ph

Formats: S

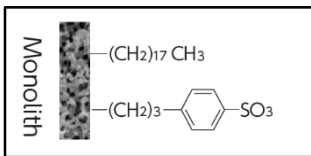
Phenyl functional group. Optimal for the recovery of hydrophobic drugs in biological samples due to its weak retentivity and different selectivity compared to a C18 phase.



MonoSpin C18-CX

Formats: S

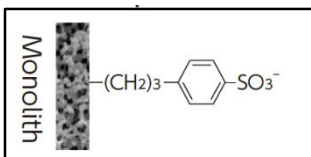
Bonded with octadecyl and benzene sulfonic acid combining both ion exchange & hydrophobic interaction. Optimal for dissociated basic drug in biological samples. Delivers higher cleanup efficiency compared to C18 or SCX.



MonoSpin SCX

Formats: S L

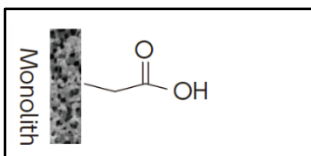
Bonded with benzenesulfonic acid combining both strong cation exchange & hydrophobic interaction. Optimal for the extraction of basic drugs.



MonoSpin CBA

Formats: S L

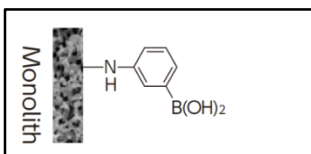
Bonded with carboxyl acid combining both weak cation exchange. Optimal for the extraction of basic drugs.



MonoSpin PBA

Formats: S

Specific column combined with phenyl boric acid. Excellent for the selective extraction of cis diol compounds, such as catechol amines.



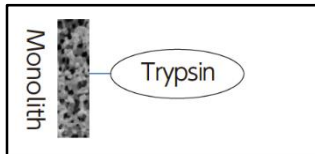
S: Small Type    L: Large Type

## Product Lineup

---

### MonoSpin Trypsin

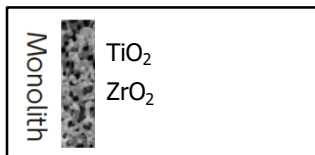
Formats: **S**



Immobilized trypsin is available for performing rapid and efficient tryptic digests of proteins.

### MonoSpin Phospholipid

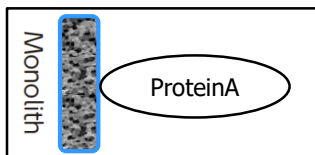
Formats: **S** **L**



Monolith skeleton coated with TiO<sub>2</sub> and ZrO<sub>2</sub>. Excellent for the adsorption and removal of phospholipids.

### MonoSpin ProA

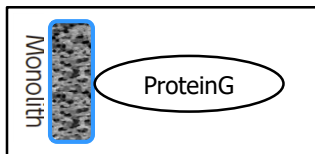
Formats: **S** **96**



Protein A immobilized affinity spin column for the rapid purification of antibodies.

### MonoSpin ProG

Formats: **S** **96**



Protein G immobilized affinity spin column for the rapid purification of antibodies.

**S**: Small Type    **L**: Large Type    **96**: 96-well plate

**Physical Properties**

| Product                   | Stationary Phases                   | S Type (Small)    |                | L Type (Large)    |                | Surface Area (m <sup>2</sup> /g) | Sample Loading Capacity (Small Type) | Filter |
|---------------------------|-------------------------------------|-------------------|----------------|-------------------|----------------|----------------------------------|--------------------------------------|--------|
|                           |                                     | Through-pore (μm) | Meso-pore (nm) | Through-pore (μm) | Meso-pore (nm) |                                  |                                      |        |
| MonoSpin C18              | Octadecyl                           | 5                 | 10             | 10                | 10             | 350                              | 100 μg (Amitriptyline)               | None   |
| MonoSpin C18 FF           | Octadecyl                           | 20                | 15             | -                 | -              | 300                              | 50 μg (Amitriptyline)                |        |
| MonoSpin Ph               | Phenyl                              | 5                 | 10             | -                 | -              | 350                              | 100 μg (Amitriptyline)               |        |
| MonoSpin C18-AX           | Octadecyl, Trimethylaminopropyl     | 5                 | 10             | -                 | -              | 350                              | 100 μg (Ibuprofen)                   |        |
| MonoSpin C18-CX           | Octadecyl, Benzenesulfonic acid     | 5                 | 10             | -                 | -              | 350                              | 100 μg (Amitriptyline)               |        |
| MonoSpin SAX              | Trimethylaminopropyl                | 5                 | 10             | 10                | 10             | 350                              | 100 μg (Ibuprofen)                   |        |
| MonoSpin SCX              | Benzenesulfonic acid                | 5                 | 10             | 10                | 10             | 350                              | 100 μg (Amitriptyline)               |        |
| MonoSpin NH <sub>2</sub>  | Aminopropyl                         | 5                 | 10             | 10                | 10             | 350                              | 100 μg (Maltopentaose)               |        |
| MonoSpin CBA              | Carboxyl                            | 5                 | 10             | 10                | 10             | 350                              | 100 μg (Amitriptyline)               |        |
| MonoSpin Amide            | Amide                               | 5                 | 10             | -                 | -              | 350                              | 100 μg (Angiotensin II)              |        |
| MonoSpin PBA              | Phenyl boric acid                   | 5                 | 10             | -                 | -              | 350                              | 100 μg (Dopamine)                    |        |
| MonoSpin TiO <sub>2</sub> | Titanium dioxide                    | 20                | 15             | -                 | -              | 350                              | 40 μg (Adenosine monophosphate)      |        |
| MonoSpin Trypsin          | TPCK treated Trypsin                | 5                 | 10             | -                 | -              | 350                              | -                                    |        |
| MonoSpin ME               | Iminodiacetic acid                  | 5                 | 10             | 10                | 10             | 350                              | 25 μg (Cu ion)                       |        |
| MonoSpin Phospholipid     | TiO <sub>2</sub> + ZrO <sub>2</sub> | 5                 | 10             | 10                | 10             | 350                              | 10 μL (Human serum)                  |        |
| MonoSpin ProA             | Protein A                           | 2                 | 60             | -                 | -              | -                                | 400 μg (Human IgG)                   |        |
| MonoSpin ProG             | Protein G                           | 2                 | 60             | -                 | -              | -                                | 400 μg (Human IgG)                   |        |

**Specifications**

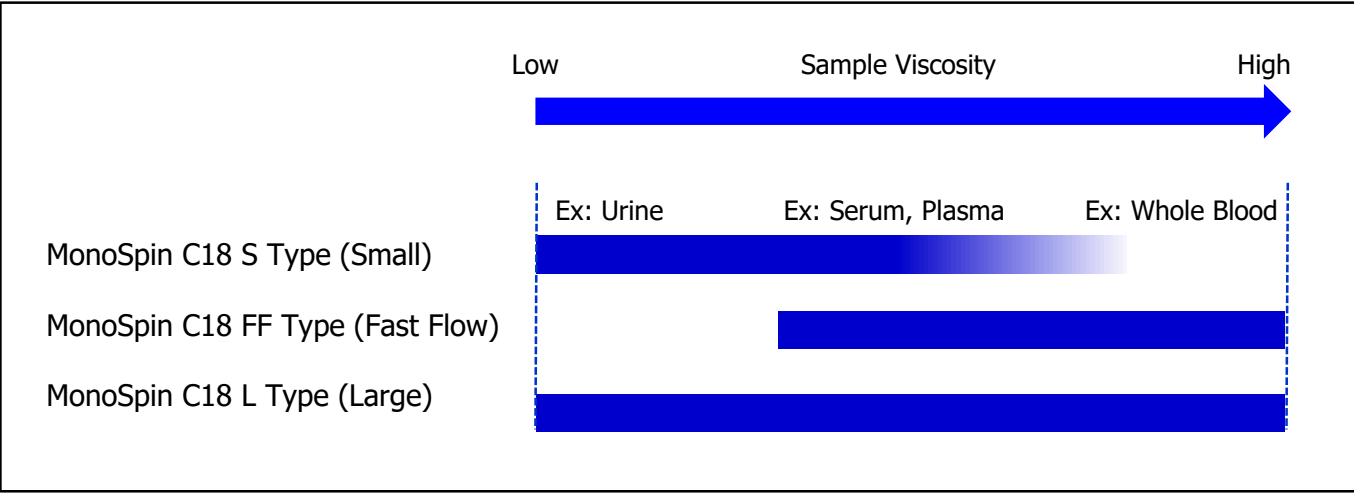
| Description             | MonoSpin S Type* <sup>1</sup> | MonoSpin FF* <sup>2</sup> | MonoSpin L Type  |
|-------------------------|-------------------------------|---------------------------|------------------|
| Disc Size               | Φ 4.2 x 1.5 mm                | Φ4.2 x 1.5 mm             | Φ9 x 3 mm        |
| Sample Volume           | 50 ~ 800 μL                   | 50 ~ 800 μL               | 0.5 ~ 8 mL       |
| Elution Volume          | 50 ~ 800 μL                   | 50 ~ 800 μL               | 0.5 ~ 8 mL       |
| Centrifugation Speed    | 2,000~10,000 x <i>g</i>       | 1,000 x <i>g</i>          | 1,000 x <i>g</i> |
| Sample Loading Capacity | 100 μg                        | 50 μg                     | 1 mg             |



# MonoSpin Series

## Appropriate for Various Viscosity Samples

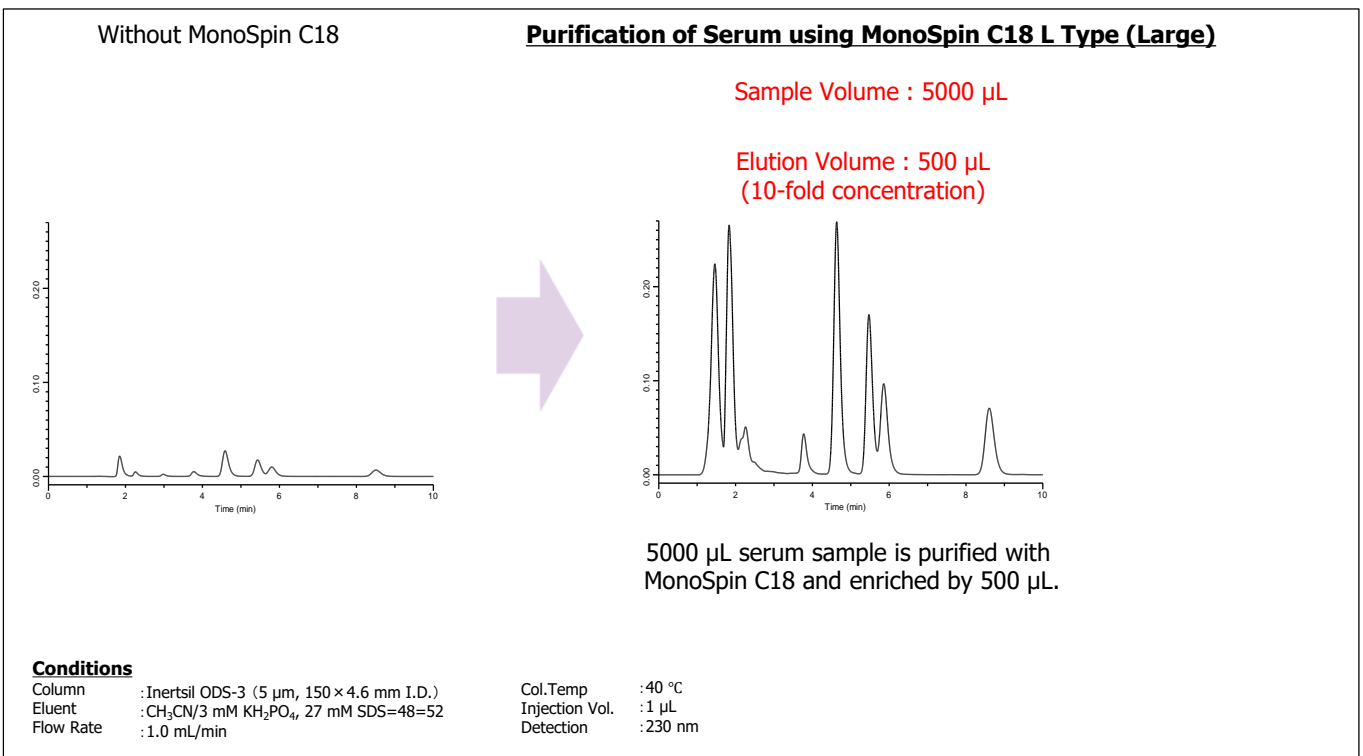
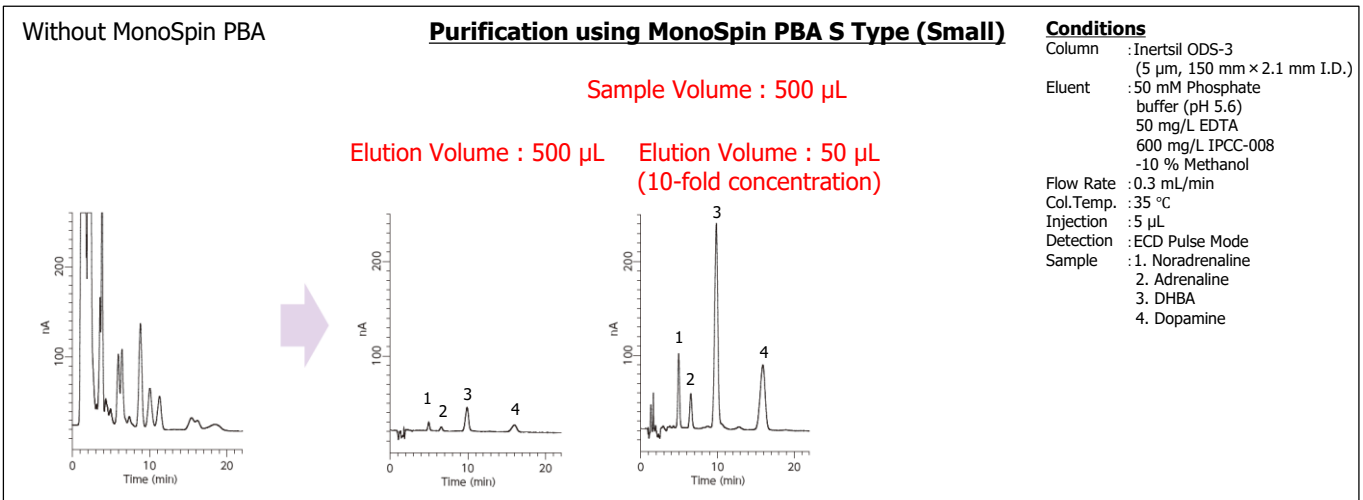
MonoSpin series are ideal for the sample preparation of biological samples. MonoSpin C18 Fast Flow (FF) type is excellent for high viscosity biological samples. Select the appropriate MonoSpin column type depending on the viscosity of sample and volume.



## MonoSpin Applications

The low-pressure, high-flow, and low-liquid-retention properties of GL Sciences' monolith silica technology make it uniquely suited for handling of small samples. MonoSpin SPE centrifugal spin columns have been developed to improve concentration and yields in low-volume sample preparation without requiring evaporation or reconstitution.

## Purification and Enrichment of Trace Samples

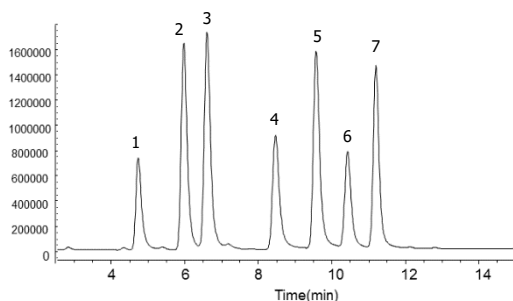
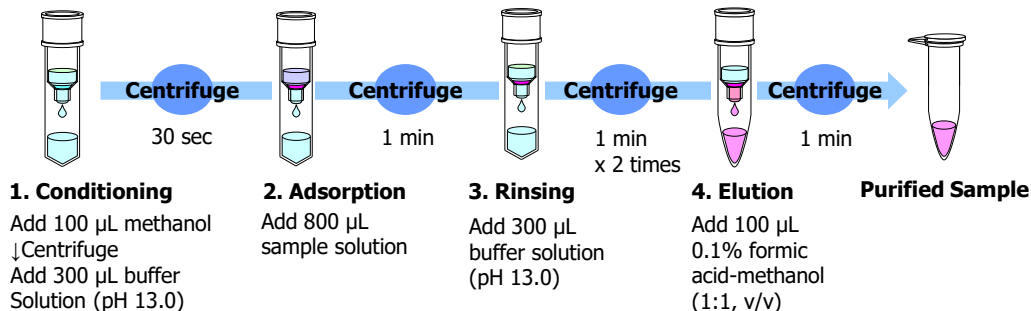


## Purification of Amphetamine in Urine using MonoSpin C18

### Sample Preparation

800  $\mu$ L sample solution mixed with 400  $\mu$ L urine and 400  $\mu$ L buffer solution (pH 13.0).

Centrifugation Speed: 5,000 x g



### Conditions

Column : InertSustainSwift C18 (3  $\mu$ m, 150  $\times$  2.1 mm I.D.)  
 Eluent : A) 10 mM Ammonium acetate-Formic acid (pH 3.3)  
 B) CH<sub>3</sub>OH  
 A/B = 90/10 - 2 min - 90/10 - 13 min - 70/30, v/v  
 Flow Rate : 0.3 mL/min  
 Col. Temp. : 40  $^{\circ}$ C  
 Detection : LC/MS  
 Sample : 1. Norephedrine  
 2. Ephedrine  
 3. Methylephedrine  
 4. Amphetamine  
 5. Methamphetamine  
 6. 3,4-methylenedioxyamphetamine  
 7. 3,4-methylenedioxymethamphetamine

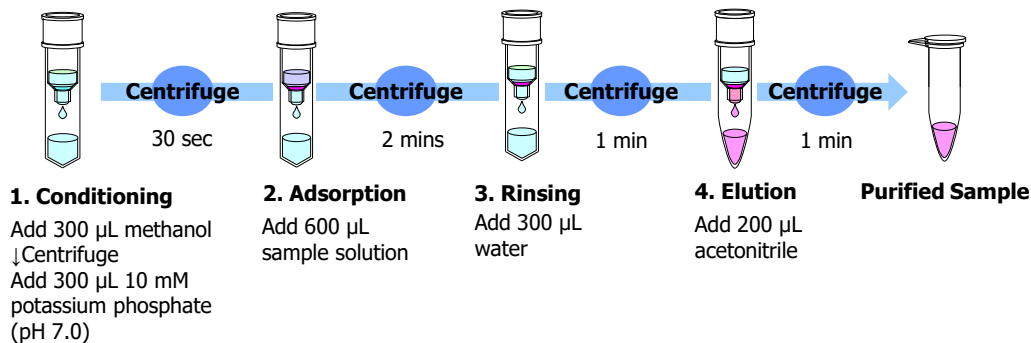
※ Data provided from Hiroshima University, Dr. Namera

## Recovery of Drugs in Serum using MonoSpin C18

### Sample Preparation

600  $\mu$ L sample solution mixed with 200  $\mu$ L serum and 400  $\mu$ L 10 mM potassium phosphate buffer solution (pH 7.0).

Centrifugation Speed: 2,300 x g



### Reproducibility study for drugs in serum sample for three days using MonoSpin C18 (n=10) MonoSpin demonstrated high reproducibility for purification of drugs.

| Sample      | Con. (ng/mL) | Rec. (%) | RSD (%) |
|-------------|--------------|----------|---------|
| Desipramine | 5            | 91.2     | 4.8     |
|             | 10           | 86.1     | 3.3     |
|             | 50           | 85.2     | 5.9     |
|             | 250          | 88.4     | 6.5     |
| Imipramine  | 5            | 96.3     | 9.5     |
|             | 10           | 95.8     | 1.5     |
|             | 50           | 94.5     | 0.9     |
|             | 250          | 95.9     | 0.9     |
| Fluvoxamine | 5            | 96.8     | 11.6    |
|             | 10           | 87.1     | 5.0     |
|             | 50           | 86.8     | 8.1     |
|             | 250          | 87.5     | 9.7     |

| Sample      | Con. (ng/mL) | Rec. (%) | RSD (%) |
|-------------|--------------|----------|---------|
| Paroxetine  | 5            | 83.7     | 3.9     |
|             | 10           | 84.1     | 7.8     |
|             | 50           | 83.9     | 8.2     |
|             | 250          | 86.7     | 7.5     |
| Maprotiline | 5            | 85.7     | 8.1     |
|             | 10           | 84.7     | 3.2     |
|             | 50           | 88.6     | 5.4     |
|             | 250          | 87.5     | 7.7     |
| Duloxetine  | 5            | 106.3    | 9.9     |
|             | 10           | 104.8    | 6.7     |
|             | 50           | 99.8     | 8.7     |
|             | 250          | 99.8     | 6.0     |

| Sample        | Con. (ng/mL) | Rec. (%) | RSD (%) |
|---------------|--------------|----------|---------|
| Amitriptyline | 5            | 83.7     | 7.0     |
|               | 10           | 81.8     | 2.8     |
|               | 50           | 83.8     | 3.0     |
|               | 250          | 88.4     | 2.7     |
| Sulpiride     | 5            | 97.9     | 9.0     |
|               | 10           | 95.5     | 8.5     |
|               | 50           | 90.8     | 2.6     |
|               | 250          | 92.6     | 3.0     |

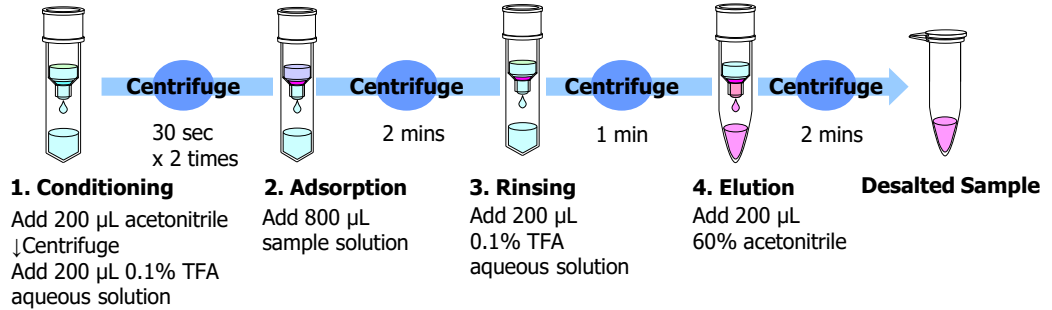


## Desalting of Protein Digests using MonoSpin C18

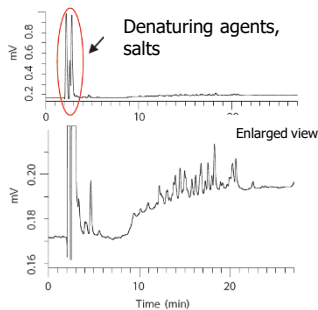
### Sample Preparation

800  $\mu$ L sample solution:  
Add TFA to tryptic digest  
sample and adjust the TFA  
final concentration to 0.1%.

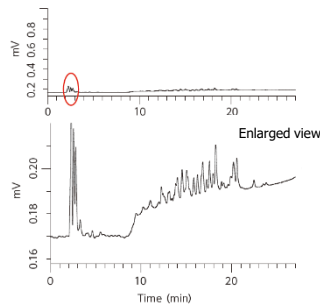
Centrifugation  
Speed: 2,300 x g



Without MonoSpin C18



Desalting using MonoSpin C18



### Conditions

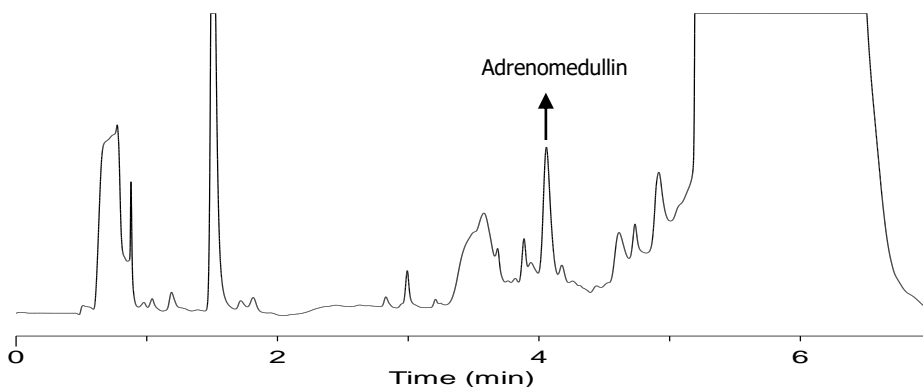
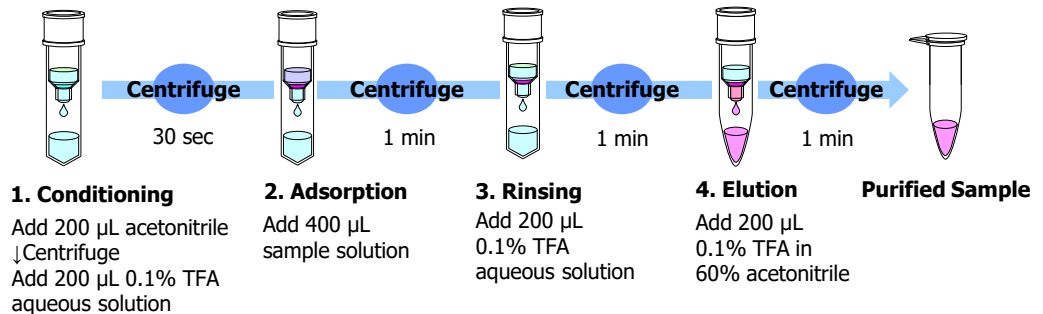
Column : Inertsil ODS-3  
(3  $\mu$ m, 150  $\times$  2.1 mm I.D.)  
Eluent : A) H<sub>2</sub>O (0.1 % TFA)  
B) Acetonitrile (0.1 % TFA)  
A/B = 90/10 - 20 min - 50/50  
Flow Rate : UV 210 nm  
Col. Temp. : 0.2 mL/min  
Detection : 40  $^{\circ}$ C  
Sample : Digested BSA 2  $\mu$ L

## Recovery of Hormone in Serum using MonoSpin C18

### Sample Preparation

Add 20  $\mu$ L of 1 mg/mL of  
Adrenomedullin to 190  $\mu$ L  
of serum. Add 0.1% TFA to  
the serum solution and  
centrifuged at 10,000 x g  
for 1 min. Take the  
supernatant.

Centrifugation  
Speed: 2,300 x g



### Conditions

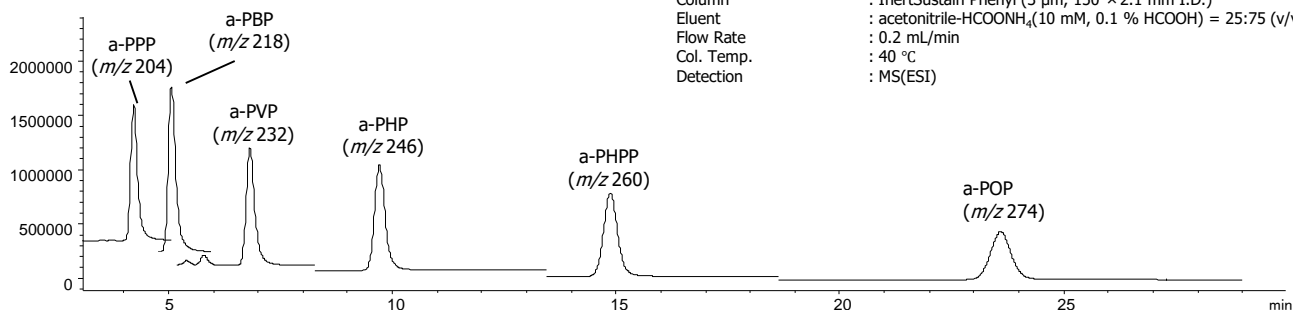
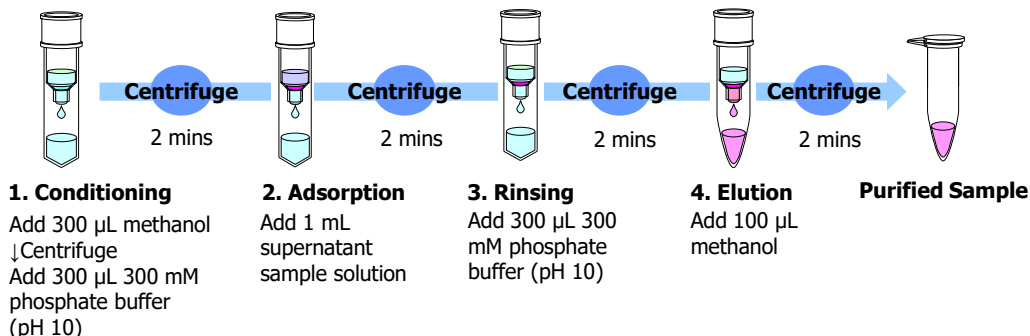
Column : InertSustain C18  
(2  $\mu$ m, 50  $\times$  2.1 mm I.D.)  
Eluent : A) 0.1 % TFA in H<sub>2</sub>O  
B) 0.1 % TFA in Acetonitrile  
A/B = 85/15 - 5 min - 50/50  
- 2 min - 50/50  
Flow Rate : 200  $\mu$ L/min  
Col. Temp. : 40  $^{\circ}$ C  
Detection : UV 210 nm  
Injection Vol. : 10  $\mu$ L

## Purification of Whole Blood using MonoSpin C18 FF (Fast Flow)

### Sample Preparation

Mix 0.3 mL whole blood and 1.2 mL 300 mM phosphate buffer (pH 10). Centrifuge at 12,100 x g for 5 mins and take the supernatant.

Centrifugation  
Speed: 1,000 x g



## Features of MonoSpin C18 FF (Fast Flow)

MonoSpin C18 FF is ideal for high viscosity samples, such as whole blood and complex matrix samples.

### Specification

|                         |                            |
|-------------------------|----------------------------|
| Through-pore            | 20 $\mu$ m                 |
| Meso-pore               | 15 nm                      |
| Disc Size               | $\phi$ 4.2 x 1.5 mm        |
| Sample Volume           | 50 ~ 800 $\mu$ L           |
| Elution Volume          | 50 ~ 800 $\mu$ L           |
| Centrifugation Speed    | Under 1,000 x g            |
| Sample Loading Capacity | 50 $\mu$ g (Amitriptyline) |

MonoSpin C18 FF offer fast flow of viscosity samples at a low centrifugation speed (1,000 x g). The following is a comparison of flow of solvents between MonoSpin C18 and MonoSpin C18 FF.

| Solvents | Volume      | MonoSpin C18 | MonoSpin C18 FF |
|----------|-------------|--------------|-----------------|
| Methanol | 500 $\mu$ L | ○            | ○               |
| Water    | 500 $\mu$ L | 400 $\mu$ L  | ○               |
| Serum*   | 500 $\mu$ L | 300 $\mu$ L  | ○               |

**Testing Conditions**  
1,000 x g 30 sec

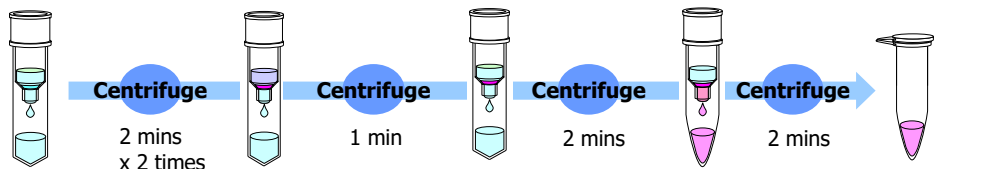
\* A supernatant from serum sample was used, which was centrifuged at 10,000 x g for 1 min.

## Purification of Pyridylaminated (PA) Sugar Chain using MonoSpin NH2

### Sample Preparation

800  $\mu$ L sample solution:  
Add acetonitrile to PA sugar chain sample solution and adjust the acetonitrile final concentration from 90 to 95%.

Centrifugation  
Speed: 2,300 x g



### 1. Conditioning

Add 500  $\mu$ L solution mixed with 250  $\mu$ L 0.1% formic acid\* in water and 250  $\mu$ L 0.1% formic acid in acetonitrile  
↓ Centrifuge  
Add 500  $\mu$ L solution mixed with 50  $\mu$ L 0.1% formic acid\* in water and 450  $\mu$ L 0.1% formic acid in acetonitrile

### 2. Adsorption

Add 800  $\mu$ L sample solution

### 3. Rinsing

Add 500  $\mu$ L solution mixed with 50  $\mu$ L 0.1% formic acid\* in water and 450  $\mu$ L 0.1% formic acid in acetonitrile

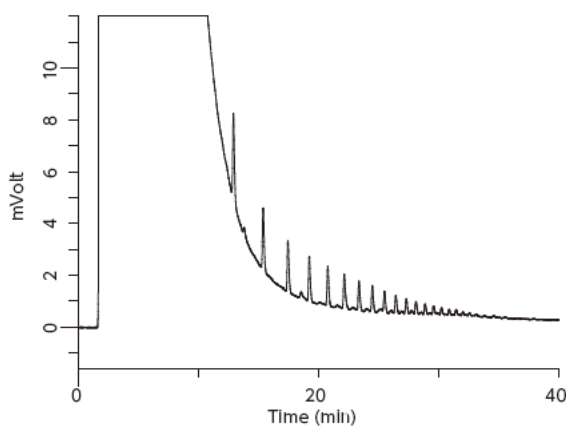
### 4. Elution

Add 50-800  $\mu$ L 0.1% formic acid in 50% acetonitrile

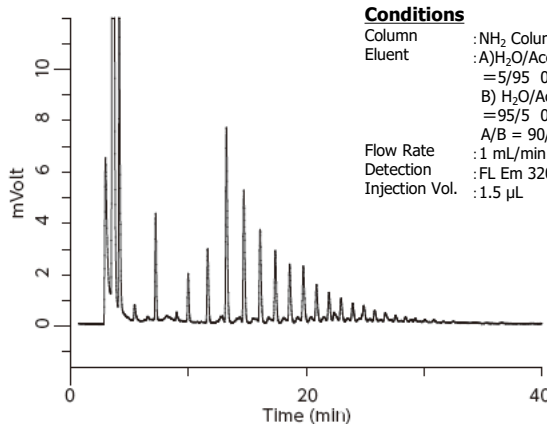
### Purified Sample

\* Acetic acid or TFA can also be used as an alternative to formic acid.

Without MonoSpin NH2



Purification of PA using MonoSpin NH2



### Conditions

Column :NH<sub>2</sub> Column (5  $\mu$ m, 250  $\times$  4.6 mm I.D.)  
Eluent :A)H<sub>2</sub>O/Acetonitrile =5/95 0.1 % Formic acid  
B) H<sub>2</sub>O/Acetonitrile =95/5 0.1 % Formic acid  
A/B = 90/10-10 min-90/10-40 min-60/40  
Flow Rate :1 mL/min  
Detection :FL Em 320 nm, Ex 400 nm  
Injection Vol. :1.5  $\mu$ L

**Purified PA sugar chain by HILIC mode.  
MonoSpin NH2 additionally removes residual fluorescent labeling reagents.**

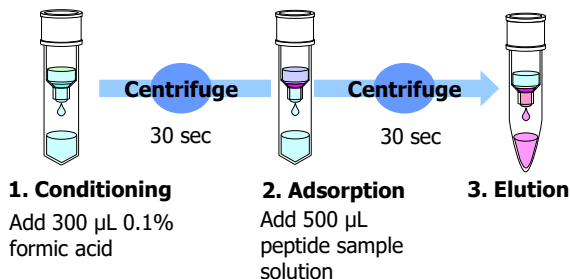
## Fractionation of Protein Digests using MonoSpin SCX

MonoSpin SCX provide a rapid and easy fractionation of peptides by stepwise elution using buffers with various salt concentration.

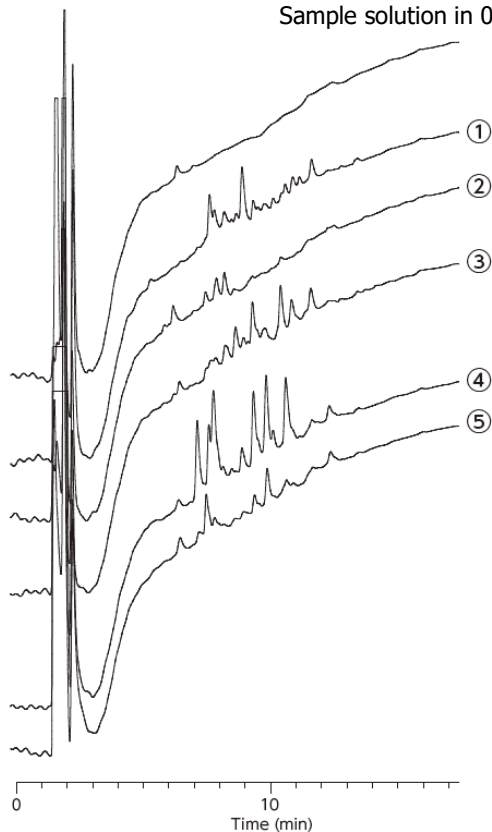
### Sample Preparation

500  $\mu$ L sample solution:  
First, desalt the peptide solution using MonoSpin C18. Then, dissolve the desalted sample solution with 0.1% formic acid.

Centrifugation  
Speed: 10,000 x g



Sample solution in 0.1% formic acid



Always replace and attach a new recovery tube whenever adding a new elution buffer

### Details of each elution buffer

- |                              |             |
|------------------------------|-------------|
| ① 25 mM HCOONH <sub>4</sub>  | 200 $\mu$ L |
| ② 50 mM HCOONH <sub>4</sub>  | 200 $\mu$ L |
| ③ 100 mM HCOONH <sub>4</sub> | 200 $\mu$ L |
| ④ 500 mM HCOONH <sub>4</sub> | 200 $\mu$ L |
| ⑤ 1 M HCOONH <sub>4</sub>    | 200 $\mu$ L |

\* Each elution buffer contains 10% acetonitrile

### Conditions

Column : Inertsil ODS-3 (3  $\mu$ m, 2.1  $\times$  150 mm)  
Eluent : A) H<sub>2</sub>O (0.1 % HCOOH)  
          B) Acetonitrile (0.1 % HCOOH)  
A/B = 90/10 - 20 min - 50/50

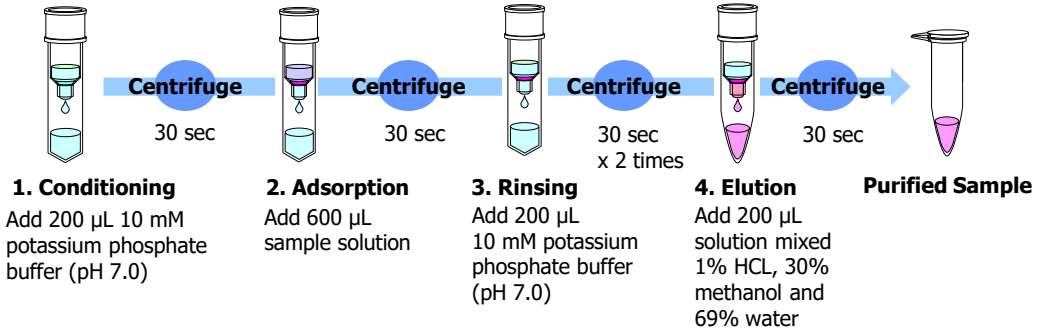
Detection : UV 210 nm  
Flow Rate : 0.2 mL/min  
Col. Temp. : 40  $^{\circ}$ C  
Injection Vol. : 2  $\mu$ L

## Purification of Paraquat and Diquat using MonoSpin CBA

### Sample Preparation

600  $\mu$ L sample solution:  
Add 200  $\mu$ L urine and and  
400  $\mu$ L 10 mM potassium  
phosphate buffer (pH 7.0)

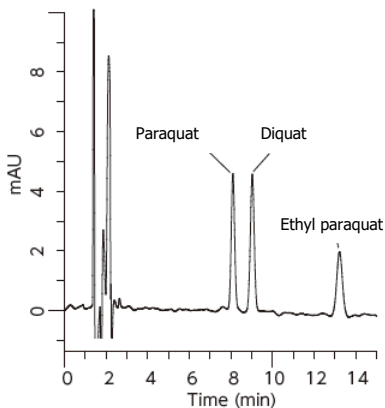
Centrifugation  
Speed: 10,000 x g



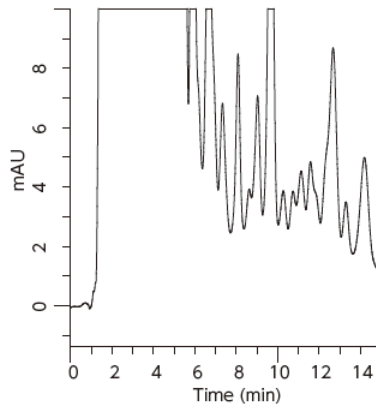
### Conditions

Column : Inertsil ODS-3 (5  $\mu$ m,  
150 mm x 4.6 mm I.D.)  
Eluent : 0.2 M phosphoric acid,  
0.1 M diethyl amine,  
7.5 mM IPCC08(IPCC-0.8,  
Sodium 1-Octanesulfonate)  
/Acetonitrile=89/11  
Flow Rate : 1 mL/min  
Col.Temp. : 40  $^{\circ}$ C  
Detection : PDA 290 nm  
Injection Vol. : 50  $\mu$ L

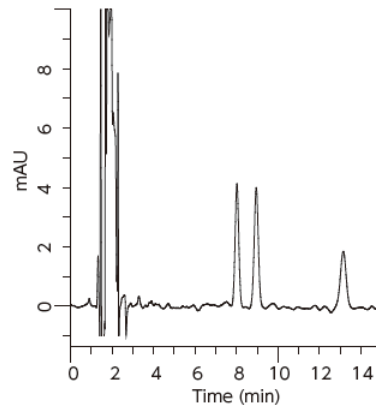
Standard Solution (1  $\mu$ g/mL)



Urine + Pesticide (1  $\mu$ g/mL)



Purification using MonoSpin CBA



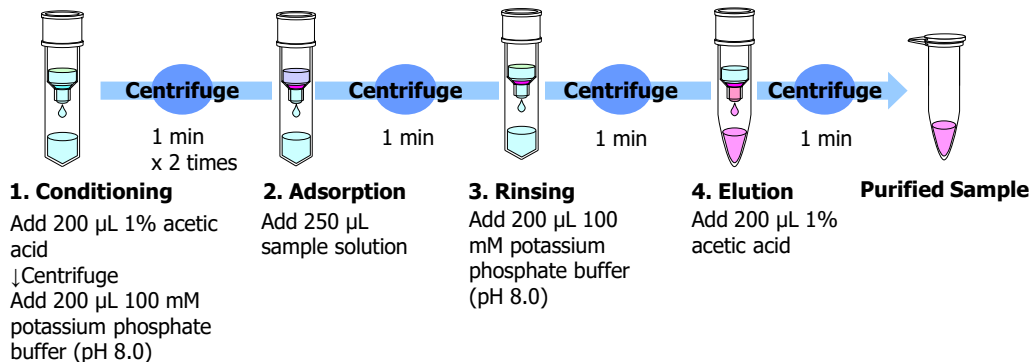
**MonoSpin CBA deliver highly efficient purification of strong basic pesticides such as Paraquat and Diquat.**

## Purification of Catecholamines using MonoSpin PBA

### Sample Preparation

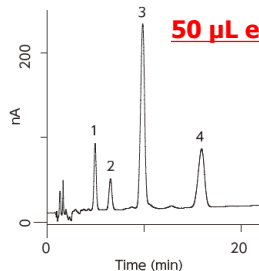
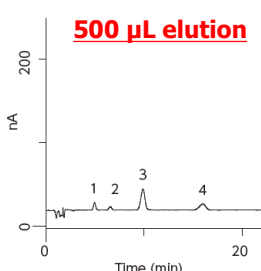
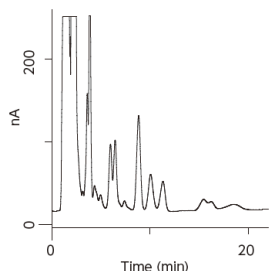
250  $\mu$ L sample solution:  
Add 200  $\mu$ L urine or serum  
and 50  $\mu$ L 1 M potassium  
phosphate buffer (pH 8.0  
adjust using phosphoric  
acid)

Centrifugation  
Speed: 10,000 x g



Without MonoSpin PBA

**Purification using MonoSpin PBA**



### Conditions

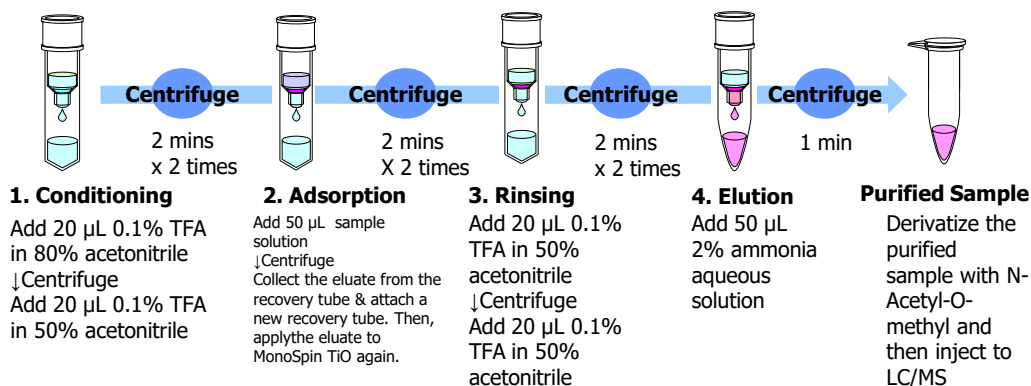
Column : Inertsil ODS-3  
(5  $\mu$ m, 150 mm  $\times$  2.1 mm I.D.)  
Eluent : 50 mM Phosphate buffer (pH 5.6)  
50 mg/L EDTA  
600 mg/L IPCC-008  
-10 % Methanol  
Flow Rate : 0.3 mL/min  
Col.Temp. : 35  $^{\circ}$ C  
Injection : 5  $\mu$ L  
Detection : ECD Pulse Mode  
Sample : 1. Noradrenaline  
2. Adrenaline  
3. DHBA  
4. Dopamine

## Purification of Organic Phosphorous Pesticides in Serum using MonoSpin TiO

### Sample Preparation

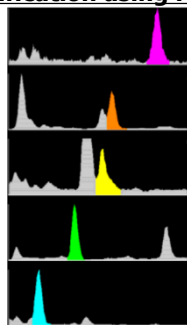
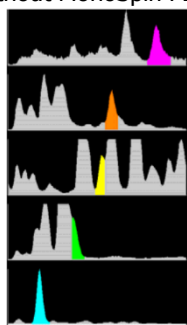
50  $\mu$ L sample solution:  
Add 10  $\mu$ L serum sample  
and 40  $\mu$ L water

Centrifugation  
Speed: 5,200 x g



Without MonoSpin PBA

**Purification using MonoSpin TiO**



Bialaphos

Glyphosate

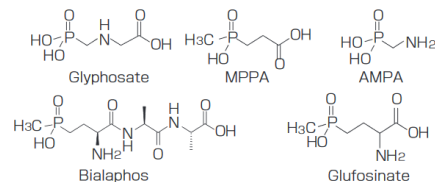
MPPA

Glufosinate

AMPA

### Conditions

Column : ODS (150 mm  $\times$  2.1 mm I.D.)  
Eluent : CH<sub>3</sub>OH/20 mM HCO<sub>2</sub>NH<sub>4</sub>  
(pH 3.0) = 15/85  
Flow Rate : 200  $\mu$ L/min  
Injection : 5  $\mu$ L  
Detection : SIM  
Sample : 1. Bialaphos  
2. Glyphosate  
3. MPPA  
4. Glufosinate  
5. AMPA  
(1 ppm each)



## Rapid Digestion of BSA using MonoSpin Trypsin

### Example of Reduction and Alkylation Protocol

1 mg Bovine serum albumin

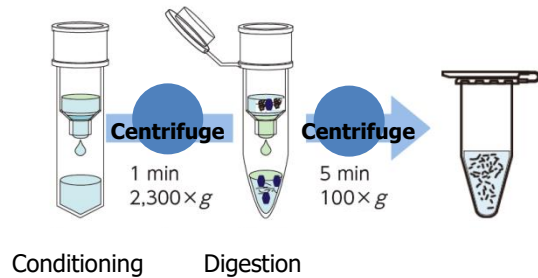
- Add 175  $\mu$ L 500 mM Tris-HCL (pH 8.0) and 8 M urea (Solution 1).
- Add 25  $\mu$ L 40 mg/mL dithiothreitol in Solution 1.
- Incubation at 37  $^{\circ}$ C for 90 mins
- Add 50  $\mu$ L 40 mg/mL iodoacetoamide in Solution 1.
- Incubation at 37  $^{\circ}$ C for 30 mins without exposure to light.

250  $\mu$ L Reduced and alkylated protein

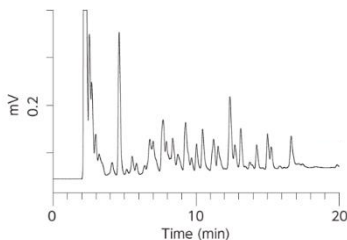
- Add 50 mM ammonium bicarbonate to make the urea final concentration to 2 M and dilute it to 750  $\mu$ L

### MonoSpin Trypsin

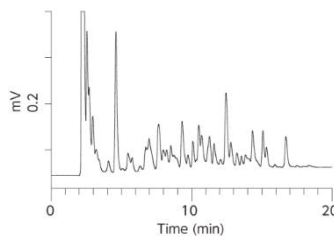
The protocol above is just an example. Optimize the protocol of preparation of reduced and Alkylated sample depending on the types of proteins.



Incubation at 37  $^{\circ}$ C for 10 hours



### Protein Digestion at 25 $^{\circ}$ C for 10 minutes using MonoSpin Trypsin



#### Conditions

|            |   |
|------------|---|
| Column     | :Inertsil ODS-3<br>(3 $\mu$ m, 150 $\times$ 2.1 mm I.D.)          |
| Eluent     | :A)H <sub>2</sub> O (0.1 % HCOOH)<br>B)Acetonitrile (0.1 % HCOOH) |
| Flow Rate  | :UV 210 nm<br>A/B = 90/10 - 20 min - 50/50                        |
| Col. Temp. | :0.2 mL/min   |
| Detection  | :40 $^{\circ}$ C  |
| Sample     | :Digested BSA 2 $\mu$ L   |

**MonoSpin Trypsin provide rapid and efficient protein digestion at room temperature in 10 mins.**

## List of References

| Products         | Target Analytes                         | Sample Matrix         | Concentration            | Recovery Rate                   | Detection | Reference No. |
|------------------|---|-----------------------|--------------------------|---------------------------------|-----------|---------------|
| MonoSpin® C18    | amitraz, metabolites                    | serum                 | 5 ng/mL                  | 95.5, 92.2 %                    | LC-MS     | [1]           |
|                  | dibudcaine, naphazoline                 | serum                 | 5 - 10 ng/mL             | 70.2 - 78.6 %                   | LC-MS     | [2]           |
|                  | MA, AP, MDA, MDMA                       | urine                 | 100 ng/mL                | 96 - 111 %                      | LC-UV     | [3]           |
|                  | 9 cold medicines                        | serum                 | 5 - 50 ng/mL             | 2.5 - 73.8 %                    | GC-MS     | [4]           |
|                  | amphetamines (AP, MA, MDA, MDMA)        | urine                 | 5 - 10 ng/mL             | 84 - 94 %                       | GC-MS     | [5]           |
|                  | eperison                                | serum                 | 0.5 ng/mL                | 92.8 - 96.0 %                   | GC-MS     | [6]           |
|                  | paraquat, diquat, fenitrothion          | serum, urine          | 25 - 100 ng/mL           | 51.3 - 106.1 %                  | GC-MS     | [7]           |
|                  | arsenics                                | urine                 | 1 ng/mL                  | 91.9 - 106.5 %                  | GC-MS     | [8]           |
|                  | MAM-2201                                | blood                 | 1 ng/mL                  | -                               | LC-MS/MS  | [9]           |
|                  | a-PVP, a-PBP                            | urine                 | 1 ng/mL                  | 82 - 100 %                      | GC-MS     | [10]          |
|                  | a-PVP, a-PBP                            | hair                  | 0.2 ng/mL                | 75.5 - 101.5 %                  | LC-MS     | [11]          |
|                  | Phthalic acid esters                    | physiological saline  | 0.2 - 50 µg/L            | 71.2 - 107.3 %                  | -         | [12]          |
|                  | <desalting>                             | digested peptides     | -                        | -                               | -         | [13]          |
|                  | <desalting>                             | iTRAQ labeled samples | -                        | -                               | -         | [14]          |
|                  | MAM-2201                                | blood                 | 2.5 - 100 ng/mL          | 1 ng/mL                         | -         | [15]          |
|                  | Naringin                                | grapefruit juice      | 10 - 500 µM              | 10 µM                           | -         | [16]          |
| MonoSpin® SCX    | opiates<br>benzodiazepines, metabolites | urine<br>serum        | 10 ng/mL<br>1 - 10 ng/mL | 69.2 - 98.9 %<br>83.3 - 112.3 % | LC-MS     | [17]          |
|                  | <Pre-column fluorecence derivatization> | -                     | -                        | -                               | -         | [18]          |
|                  | <desalting of amino acid>               | -                     | -                        | -                               | -         | [19]          |
| MonoSpin® C18-CX | acidic and basic drugs                  | urine                 | 1 - 25 ng/mL             | 65 - 123 %                      | GC-MS     | [20]          |
|                  | <halogenated compounds>                 | cells                 | -                        | -                               | -         | [21]          |
| MonoSpin® C18-AX | amphetamines (AP, MA), opiates, THC     | urine                 | 2 - 10 ng/mL             | 93.1 - 108.1 %                  | GC-MS     | [22]          |
| MonoSpin® PBA    | Adenosine                               | urine                 | 6 µM                     | 80 - 113 %                      | -         | [23]          |

- [1] J. Chromatogr., B 867 (2008) 99-104.  
 [2] J. Chromatogr., B 872 (2008) 186-190.  
 [3] J. Chromatogr., A 1208 (2008) 71-75.  
 [4] Chromatographia., 70 (2009) 519-526.  
 [5] Anal. Chim. Acta., 661 (2010) 42-46.  
 [6] J. Health Sci., 56 (2010) 598-605.  
 [7] Anal. Bioanal. Chem., 400 (2011) 25-31.  
 [8] J. Sep. Sci., 35 (2012) 2506-2513.  
 [9] Forensic Toxicol., 31 (2013) 333-337.  
 [10] Forensic Toxicol., 32 (2014) 68-74  
 [11] J. Chromatogr., B 942-943 (2013) 15-20.  
 [12] J Pharm Anal., 1 (2011) 92-99

- [13] Proteomics., 13 (2013) 751-755  
 [14] Journal of proteomics., 84 (2013) 40-51  
 [15] Forensic Toxicol., 31 (2013) 333-337  
 [16] The Journal of Clinical Pharmacology., 54 (2013)  
 [17] J. AOAC Int., 94 (2011) 765-774.  
 [18] Biomed. Chromatogr., 26 (2012) 147-151.  
 [19] Orig Life Evol Biosph., 43 (2013) 99-108  
 [20] J. Sep. Sci., 34 (2011) 2232-2239.  
 [21] Toxicology., 314 (2013) 22-29  
 [22] Forensic Toxicol., 31 (2013) 312-321.  
 [23] Biosensors and Bioelectronics., 41 (2013) 379-385



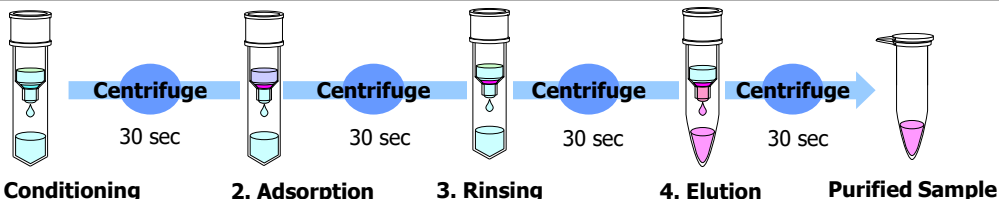
## Recovery of Metal Ions using MonoSpin ME

MonoSpin ME is bonded with iminodiacetic acid and optimal for the recovery and purification of metal ions. Specifically, it is excellent for the extraction and purification of trace Pb in blood or urine. Additionally, it is appropriate for removing inorganic divalent cations from sample to prevent ion suppression for LC-MS/MS applications.

### Sample Preparation

500  $\mu$ L 25  $\mu$ g/mL  $\text{Cu}^{2+}$

Centrifugation  
Speed: 3,000 x g



#### 1. Conditioning

Add 200  $\mu$ L water  
↓ Centrifuge  
Add 200  $\mu$ L 2N- $\text{HNO}_3$   
↓ Centrifuge  
Add 400  $\mu$ L  
100 mM  $\text{CH}_3\text{COONH}_4$   
(pH 5.5)

#### 2. Adsorption

Add 500  $\mu$ L  
25  $\mu$ g/mL  $\text{Cu}^{2+}$

#### 3. Rinsing

Add 100 mM  
 $\text{CH}_3\text{COONH}_4$   
(pH 5.5)

#### 4. Elution

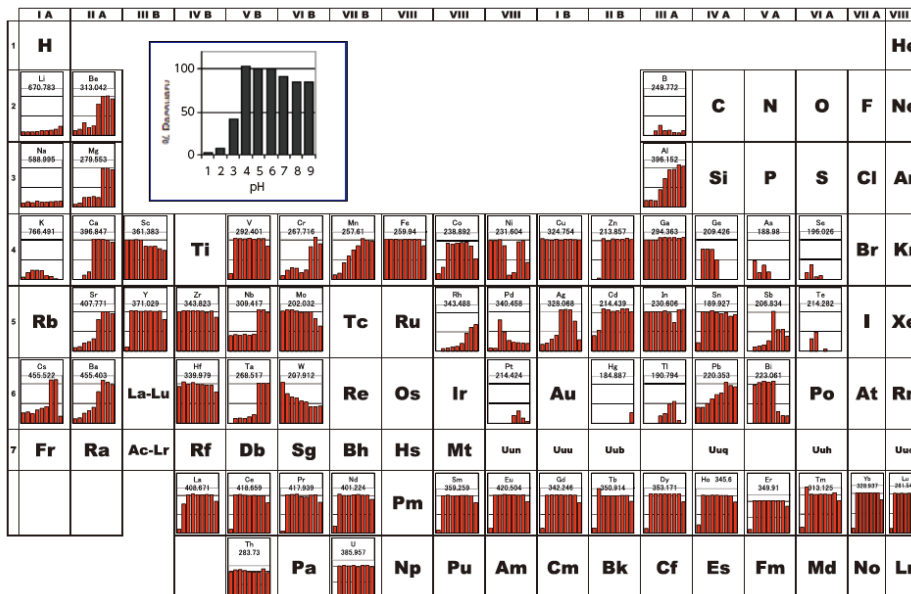
Add 500  $\mu$ L  
2N- $\text{HNO}_3$

#### Purified Sample

### Recovery rate of $\text{Cu}^{2+}$ using Zeeman GF-A-AF system

| Number of Injections | Volume of solvent introduced (mL) | Recovery rate (%) |
|----------------------|-----------------------------------|-------------------|
| 1                    | 0.8                               | 98 ± 4            |
| 2                    | 1.6                               | 97 ± 5            |
| 3                    | 2.4                               | 95 ± 5            |
| 4                    | 3.2                               | 95 ± 5            |
| 5                    | 4                                 | 94 ± 3            |

### Retention Characteristics of Metal Element using Iminodiacetic Acid Functional Groups with Various pH



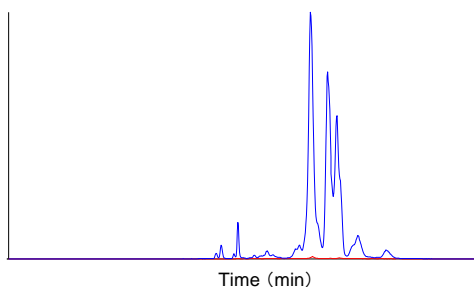
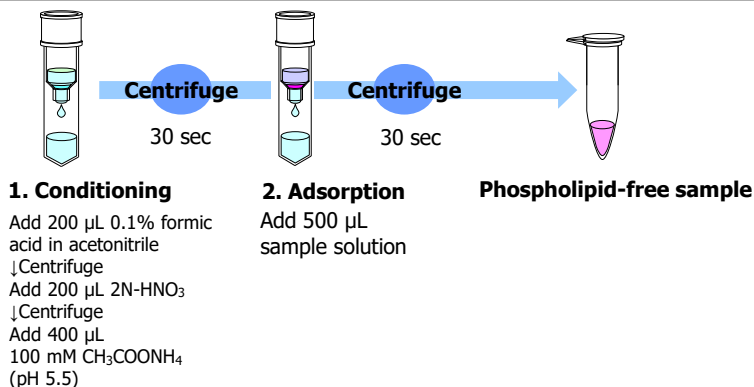
## Removal of Phospholipids using MonoSpin Phospholipid

MonoSpin Phospholipid removes more than 90% of phospholipids from biological samples resulting in eliminating ion suppression in LC-MS/MS analysis. The MonoSpin Phospholipid also removes phospholipids from a serum sample volume of 50  $\mu\text{L}$ .

### Sample Preparation

Mix 0.1% formic acid in acetonitrile with serum (4:1) in 2 mL tube. Centrifuge at 10,000 x g for 30 sec. Take the supernatant.

Centrifugation Speed: 3,000 x g



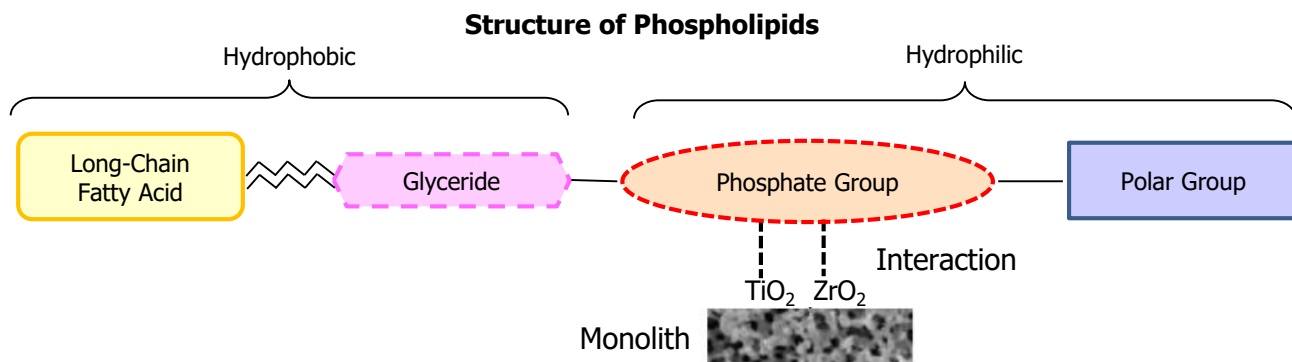
— Deproteinized and centrifuged supernatant

— Sample clean up by MonoSpin Phospholipid (Removes more than 90% of phospholipids)

### Phospholipid Removal Efficiency of MonoSpin Phospholipid

### Retention Mechanism of Phospholipids

Monolith skeletal structure coated with  $\text{TiO}_2$  and  $\text{ZrO}_2$  selectively interacts with metal oxides and phosphorylated compounds, resulting in removing more than 90 % of phospholipids.

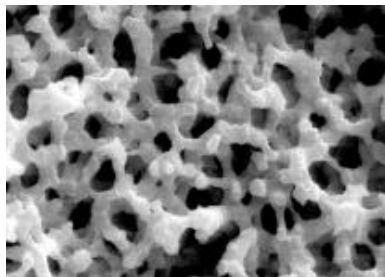


**Rapid Purification of Antibodies using MonoSpin ProA and ProG**

MonoSpin ProA and MonoSpin ProG are immobilized with protein A or protein G onto a silica monolith offering rapid purification of antibodies. A 96-well plate format is also available for high throughput purification.

**Features**

The silica is modified with a hydrophilic polymer and then immobilized with either Protein A or Protein G to prevent the adsorption of proteins, resulting in rapid purification and high recovery of antibodies.

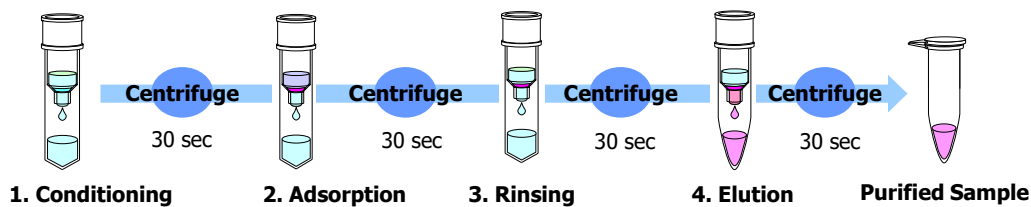


| Specification        |   |
|----------------------|---|
| Bonded Phase         | Protein A or Protein G                    |
| Through-pore         | 2 μm                                      |
| Meso-pore Size       | 60 nm                                     |
| Disc Size            | Φ4.6 x 1.5 mm                             |
| Sample Volume        | 50 - 500 μL                               |
| Recovery Rate        | MonoSpin ProA: IgG 90 % (With 400 mg IgG) |
|                      | MonoSpin ProG: IgG 90 % (With 300 mg IgG) |
| Elution Volume       | 50 μL                                     |
| Centrifugation speed | 2,300 × g                                 |

**Antibody Compatibility Table**

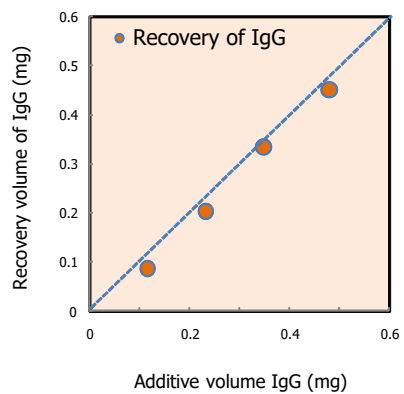
| Species | Antibody Class | Protein A | Protein G |
|---------|----------------|-----------|-----------|
| Human   | IgG            | ⊙         | ⊙         |
|         | IgG1           | ⊙         | ⊙         |
|         | IgG2           | ⊙         | ⊙         |
|         | <b>IgG3</b>    | —         | ⊙         |
|         | IgG4           | ⊙         | ⊙         |
|         | IgM            | —         | —         |
|         | <b>IgA</b>     | —         | —         |
|         | IgE            | —         | —         |
|         | IgD            | —         | —         |
|         | Fab            | ○         | ○         |
|         | ScFv           | ○         | —         |

## Purification of IgG only in Five Minutes using MonoSpin ProA and ProG

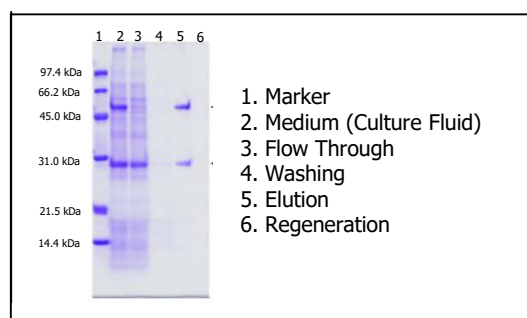


As shown below, the antibody concentrations were determined quantitatively from medium of CHO cells. The purified antibodies show very less impurities by the results from electrophoresis.

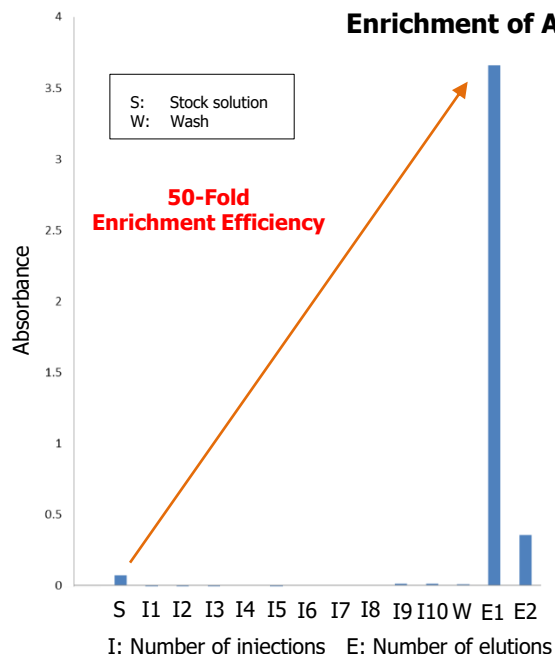
**Calibration Curve of IgG Concentration**



**Results of Recovery by Electrophoresis**



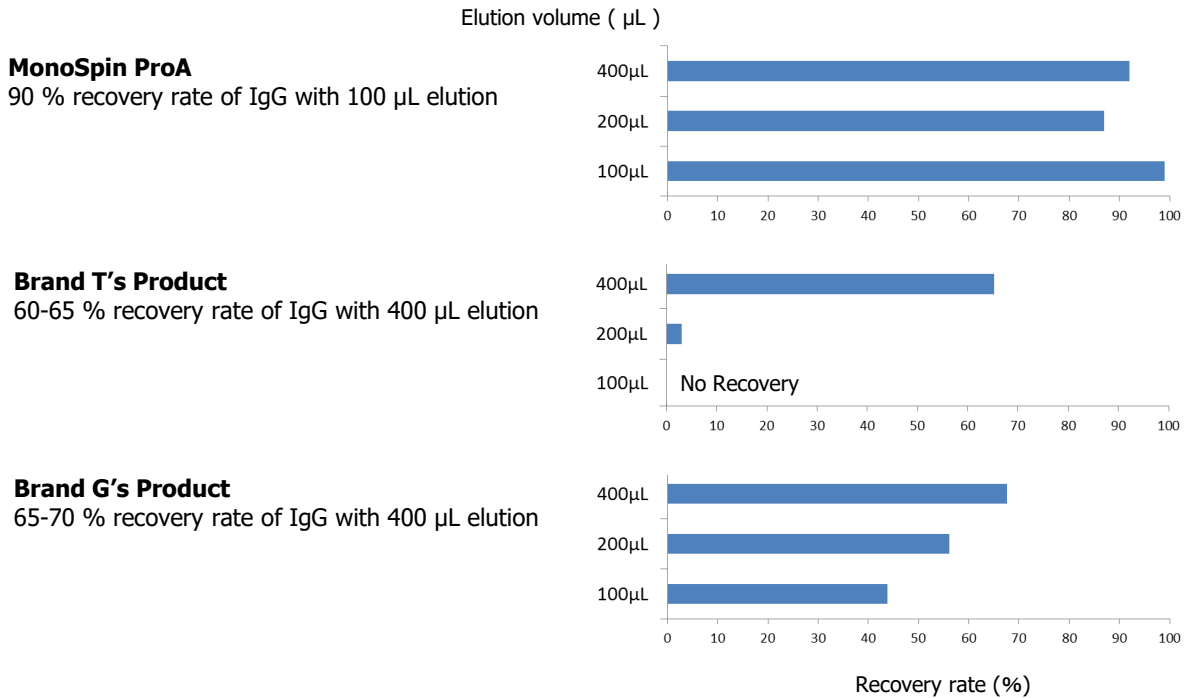
**Enrichment of Antibody Solution using MonoSpin ProA**



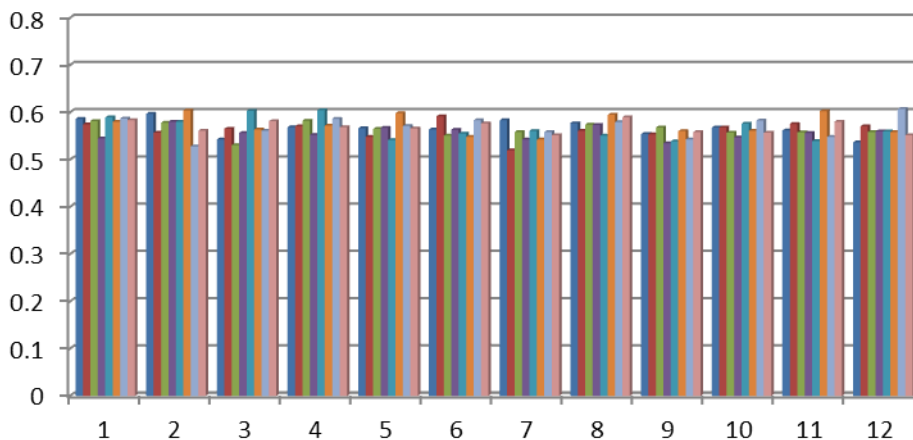
500  $\mu$ L volume of 0.025 mg / mL of human IgG solution was applied to MonoSpin ProA spin column (ten consecutive times). Then, the elution of IgG concentration was measured with 100  $\mu$ L elution buffer twice (E1 and E2). The first IgG elution (E1) was 50-fold concentration of the stock solution and showed 90 % recovery of IgG without the loss of IgG.

**Comparison of Elution Volume & Recovery Rate with other Brands' Products**

MonoSpin ProA only requires 100  $\mu$ L elution buffer, providing a recovery rate of at least 90% IgG. On the other hand, other brands' products requires 400  $\mu$ L of elution buffer with a recovery rate of 70% IgG.



**Recovery Rate and Reproducibility of IgG from medium cultured CHO cells with MonoSpin ProA 96-Well Plate**



Sample volume: 150 mL  
 Elution volume: 150 mL  
 Recovery rate: 90 % (CV 3.1 %)  
 IgG concentration: 1.3 mg/mL

## Ordering Information

### MonoSpin S Type (Small) Columns

- Each MonoSpin S Type (Small) columns are attached with 1.7 mL recovery tubes and 2.0 mL waste tubes.

| Description           | Qty     | Cat. No.   |
|-----------------------|---------|------------|
| MonoSpin C18          | 50 pcs  | 5010-21700 |
|                       | 100 pcs | 5010-21701 |
| MonoSpin C18 FF       | 50 pcs  | 5010-21670 |
|                       | 100 pcs | 5010-21671 |
| MonoSpin Ph           | 50 pcs  | 5010-21733 |
|                       | 100 pcs | 5010-21734 |
| MonoSpin C18-AX       | 50 pcs  | 5010-21735 |
|                       | 100 pcs | 5010-21736 |
| MonoSpin C18-CX       | 50 pcs  | 5010-21731 |
|                       | 100 pcs | 5010-21732 |
| MonoSpin SAX          | 50 pcs  | 5010-21720 |
|                       | 100 pcs | 5010-21721 |
| MonoSpin SCX          | 50 pcs  | 5010-21725 |
|                       | 100 pcs | 5010-21726 |
| MonoSpin NH2          | 50 pcs  | 5010-21710 |
|                       | 100 pcs | 5010-21711 |
| MonoSpin CBA          | 50 pcs  | 5010-21729 |
|                       | 100 pcs | 5010-21730 |
| MonoSpin Amide        | 50 pcs  | 5010-21727 |
|                       | 100 pcs | 5010-21728 |
| MonoSpin PBA          | 50 pcs  | 5010-21715 |
|                       | 100 pcs | 5010-21716 |
| MonoSpin TiO          | 50 pcs  | 5010-21705 |
|                       | 100 pcs | 5010-21706 |
| + MonoSpin Trypsin    | 50 pcs  | 7820-11300 |
|                       | 100 pcs | 7820-11301 |
| MonoSpin ME           | 50 pcs  | 5010-21737 |
|                       | 100 pcs | 5010-21738 |
| MonoSpin Phospholipid | 50 pcs  | 5010-21698 |
|                       | 100 pcs | 5010-21699 |

\* MonoSpin Trypsin must be refrigerated when not in use.



MonoSpin S Type (Small)



Recovery Tube  
(1.7 mL)



Waste Tube  
(2 mL)

## Ordering Information

### MonoSpin L Type (Large) Columns

| Description             | Qty    | Cat. No.   |
|-------------------------|--------|------------|
| MonoSpin L C18          | 30 pcs | 7510-11320 |
| MonoSpin L SAX          | 30 pcs | 7510-11321 |
| MonoSpin L SCX          | 30 pcs | 7510-11322 |
| MonoSpin L NH2          | 30 pcs | 7510-11323 |
| MonoSpin L CBA          | 30 pcs | 7510-11324 |
| MonoSpin L ME           | 30 pcs | 7510-11325 |
| MonoSpin L Phospholipid | 30 pcs | 7510-11326 |



MonoSpin L Type (Large)

- \* Each MonoSpin L Type (Large) columns does not come with any recovery and waste tubes.
- \* Please prepare a 50 mL centrifuge tube separately (Ex: Falcon tube).

### MonoSpin ProA, MonoSpin ProG

| Description                 | Qty    | Cat. No.   |
|-----------------------------|--------|------------|
| MonoSpin ProA               | 10 pcs | 7510-11310 |
| MonoSpin ProG               | 10 pcs | 7510-11311 |
| MonoSpin ProA 96-Well Plate | 1/pk   | 7510-11312 |
| MonoSpin ProG 96-Well Plate | 1/pk   | 7510-11313 |

- \* MonoSpin ProA, ProG must be refrigerated when not in use.

### MonoSpin S Type (Small) Trial Kits

- The following trial kits are available for purchase to test a whole range of MonoSpin columns to make the best decision on which MonoSpin to use.

| Description          | Available Phases                   | Qty         | Cat. No.   |
|----------------------|------------------------------------|-------------|------------|
| MonoSpin Trial Kit 1 | C18, TiO, SCX, SAX, 10 pcs each.   | 10 pcs/4 pk | 5010-21740 |
| MonoSpin Trial Kit 2 | C18, Amide, CBA, NH2, 10 pcs each. | 10 pcs/4 pk | 5010-21741 |
| MonoSpin Trial Kit 3 | SCX, SAX, CBA, NH2, 10 pcs each.   | 10 pcs/4 pk | 5010-21742 |

- MonoSpin Trial Kit 1: Optimal for drug extraction in biological samples & purification of pesticides.
- MonoSpin Trial Kit 2: Compatible with both hydrophilic/hydrophobic applications. Optimal for purification of peptide and sugar chains.
- MonoSpin Trial Kit 3: Optimal for purification of ionic analytes.

## FastRemover for Protein

### Maximizes Sample Yield

FastRemover is a 96-well type filter plate ideal for preparing precipitated protein samples. High-throughput processing of plasma samples is performed simply, accurately, and reproducibly.

### Features

- Easy filtration of biological samples.
- Trace analytes can be processed with minimal sample loss owing to the low volume design of the elution tip and filter.
- Perfect for processing with automated vacuum instruments.
- High sensitivity analysis is unaffected by contamination from plasticizers or other impurities found in other 96-well plates.
- Removal of microparticle contaminants enables injection to LC/MS/MS directly from the collection plate.

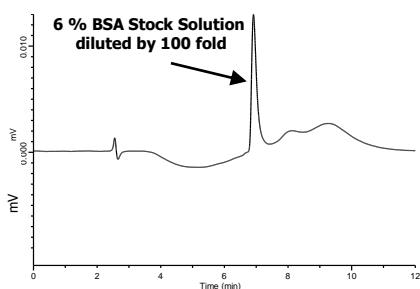
### Typical Protocol using FastRemover for Protein

To demonstrate the performance of FastRemover for Protein, a BSA solution was prepared as follows:

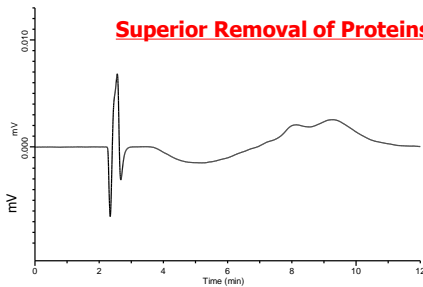
#### Performance of Removal of Proteins

1. 200  $\mu$ L of plasma is thoroughly mixed in a test tube containing 800  $\mu$ L of acetonitrile.
  2. The FastRemover and collection plate are attached to a vacuum manifold.
  3. The BSA sample mixture is loaded into the 96-well plate and vacuum applied above 0.02 Mpa (0.2 Bar) for 2 minutes.
- \* Methanol can be used as well as a replacement of acetonitrile.

#### [Standard Sample]



#### [After filtrated with FastRemover]



#### Conditions

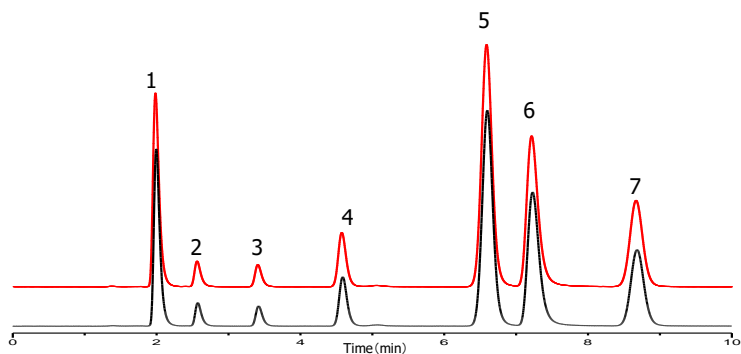
|                |   |
|----------------|---|
| Column         | :Inertsil WP300 C8<br>(5 $\mu$ m, 150 x 2.1 mm I.D.)  |
| Eluent:        | :A) 0.1% TFA in $\text{CH}_3\text{CN}$<br>:B) 0.1 % TFA in $\text{H}_2\text{O}$<br>:A/B=10/90 – 5 min - 50/50 |
| Flow Rate      | :0.2 mL/min   |
| Col.Temp.      | :40 C   |
| Detection      | :280 nm   |
| Injection Vol. | :2 $\mu$ L  |



## Adsorption Test

A standard mixture containing 7 compounds were analyzed to evaluate potential non-specific adsorption to the plate. As shown in the following chromatograms, FastRemover for Protein provides minimal loss of target samples.

**Black:** Before treatment with FastRemover  
**Red:** After treatment with FastRemover



### Conditions

Column :Inertsil ODS-3  
 (3  $\mu$ m, 150 x 2.1 mm I.D.)  
 Eluent: :48% CH<sub>3</sub>CN  
 (0.7 % KH<sub>2</sub>PO<sub>4</sub> + 0.17% SDS, pH 4.5)  
 Flow Rate :0.2 mL/min  
 Col.Temp. :40 C  
 Detection :230 nm  
 Injection Vol. :1  $\mu$ L

Samples

1. Acetaminophen
2. Pyridine
3. Phenol
4. Hexobarbital
5. Propranolol
6. Berberine
7. Doxepin

**Excellent Non-Specific Adsorption to the Plate**

## Ordering Information

### FastRemover for Protein

| Description                                    | Qty  | Cat. No.   |
|--|------|------------|
| FastRemover for Protein (0.45 $\mu$ m) 96-well | 1/pk | 7820-11001 |
|  | 5/pk | 7820-11005 |
| FastRemover for Protein (0.20 $\mu$ m) 96-well | 1/pk | 7820-11011 |
|  | 5/pk | 7820-11015 |

### Related Accessories

| Description                                       | Qty    | Cat. No.   |
|---|--------|------------|
| Vacuum Manifold with shims                        | 1 Set  | 5010-33101 |
| Sealing Mat for Microplate, WSM-3SX (PTFE/SILCON) | 5/pk   | 1030-43831 |
| Sealing Tape for Microplate, (Polyolefin)         | 100/pk | 1065-70002 |

## FastRemover for Phospholipid

### Rapid and Efficient Removal of Proteins and Phospholipids

The FastRemover for Phospholipid 96-well plate deliver a rapid and effective removal of proteins and phospholipids in plasma and serum samples without sacrificing the recovery of your target analytes.

### Features

- Simple & easy protocol to remove proteins and phospholipids.
- High sensitivity analysis is unaffected by contamination from plasticizers or other impurities found in other 96-well plates.
- Removal of microparticle contaminants enables injection to LC/MS/MS directly from the collection plate.
- Removes more than 90% of phospholipids resulting in eliminating ion-suppression.
- Prolong HPLC/UHPLC column lifetime by removing proteins and phospholipids that can damage your column.

### Typical Protocol using FastRemover for Phospholipid

The presence of phospholipids in plasma or serum samples is one of the major problems in LC/MS-(MS) analysis. Phospholipids can build up on your MS system and bleed off the HPLC/UHPLC column, causing ion suppression, shifts in retention time and peak shape and necessitating time consuming column and system maintenance. Use of FastRemover for Phospholipid 96-well plate will eliminate these effects and extend the lifetime of your HPLC/UHPLC column and deliver more predictable/accurate mass spectrometry results.

#### Easy Protocol by FastRemover for Phospholipid

##### Step 1: Solvent Loading

Add 400  $\mu$ L of 1% Formic Acid in Acetonitrile into the wells

##### Step 2: Sample Loading

Add 100  $\mu$ L of serum sample into the wells

##### Step 3: Mixing

Aspirate the samples up & down couple of times by a manual pipette or an automated pipetting system may be used to ensure complete mixing

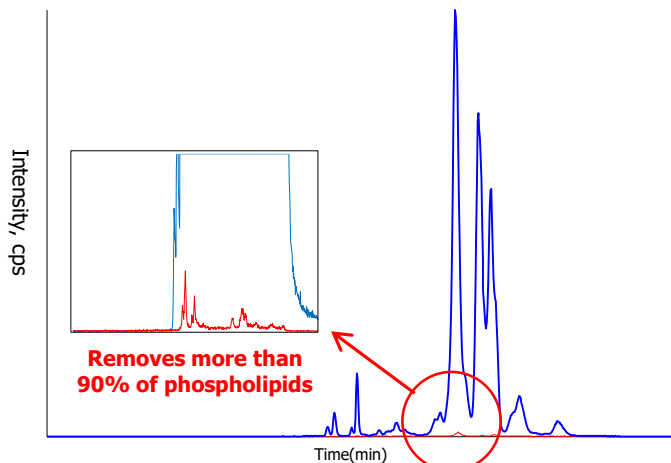
##### Step 4: Analysis

Collect the extracted sample from the 96-well plate & inject to LC/MS(MS)

\* **Traditional Protein Precipitation method:**  
Adding acetonitrile to sample and collecting the supernatant layer

**RED:** FastRemover for Phospholipid

**BLUE:** \* Traditional Protein Precipitation

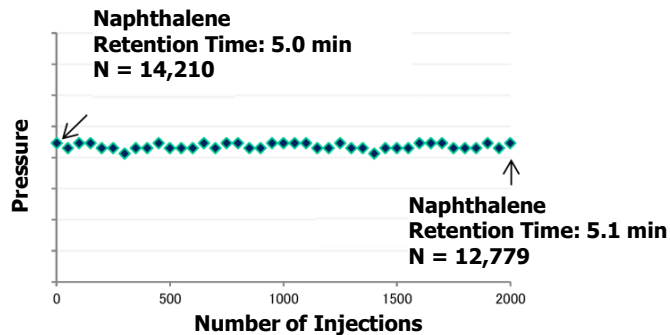


#### Comparison of Phospholipid Removal between

\* Traditional Protein Precipitation method and FastRemover for Phospholipid

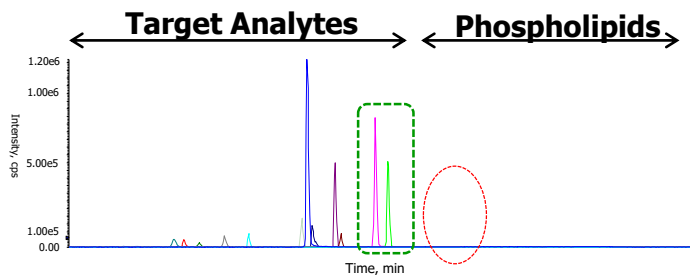
## Extend HPLC/UHPLC Column Lifetime

Over the course of multiple injections, phospholipids build up and can lead to reduced column lifetime, showing increase in column back pressure, decrease in column sensitivity and efficiency. The figure on the right illustrates the removal efficiency of phospholipids, proteins and microparticles by FastRemover for Phospholipid.



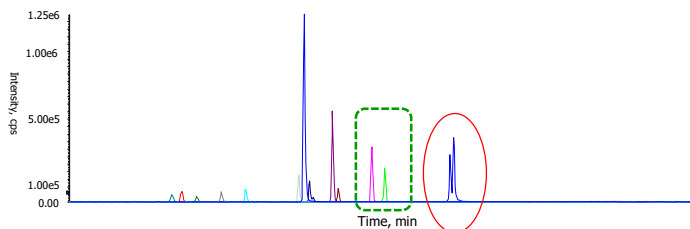
## Industry Leading High Recovery for Bioanalysis

As shown below, the FastRemover for Phospholipid 96-well plate deliver a rapid and effective removal of proteins and phospholipids in plasma and serum samples without sacrificing the recovery of your target analytes.



### FastRemover for Phospholipid

As shown on the left, not only FastRemover for Phospholipid completely removes phospholipids, but also provide high recovery even for those highly hydrophobic analytes.



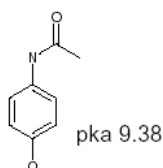
### Brand A Phospholipid Removal Plate

Brand A show adsorption of hydrophobic analytes resulting in poor recovery and elution of phospholipids.

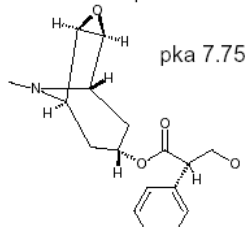
## Comparison of Recovery Rate using Various Solvents for Deproteinization

The following seven solvents were used to deproteinate a serum sample. As a result, 0.1% formic acid in 100% acetonitrile showed the best recovery for not only basic, but also for acidic compounds.

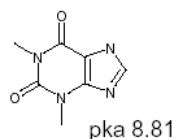
1. Acetaminophen



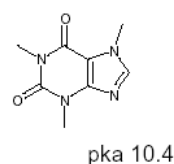
2. Scopolamine



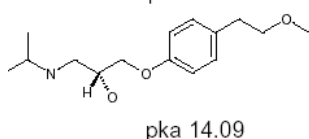
3. Theophylline



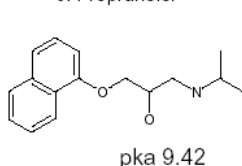
4. Caffeine



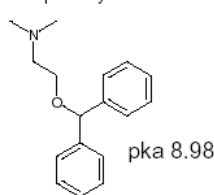
5. Metoprolol



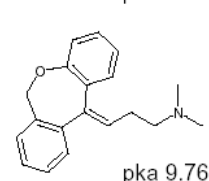
6. Propranolol



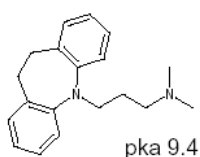
7. Diphenhydramine



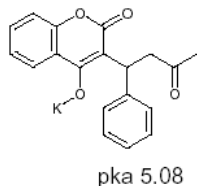
8. Doxepin



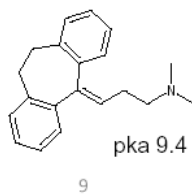
9. Imipramine



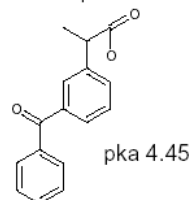
10. Warfarin



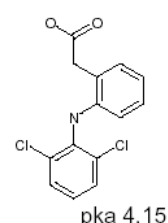
11. Amitriptyline



12. Ketoprofen



13. Diclofenac



The Best Results

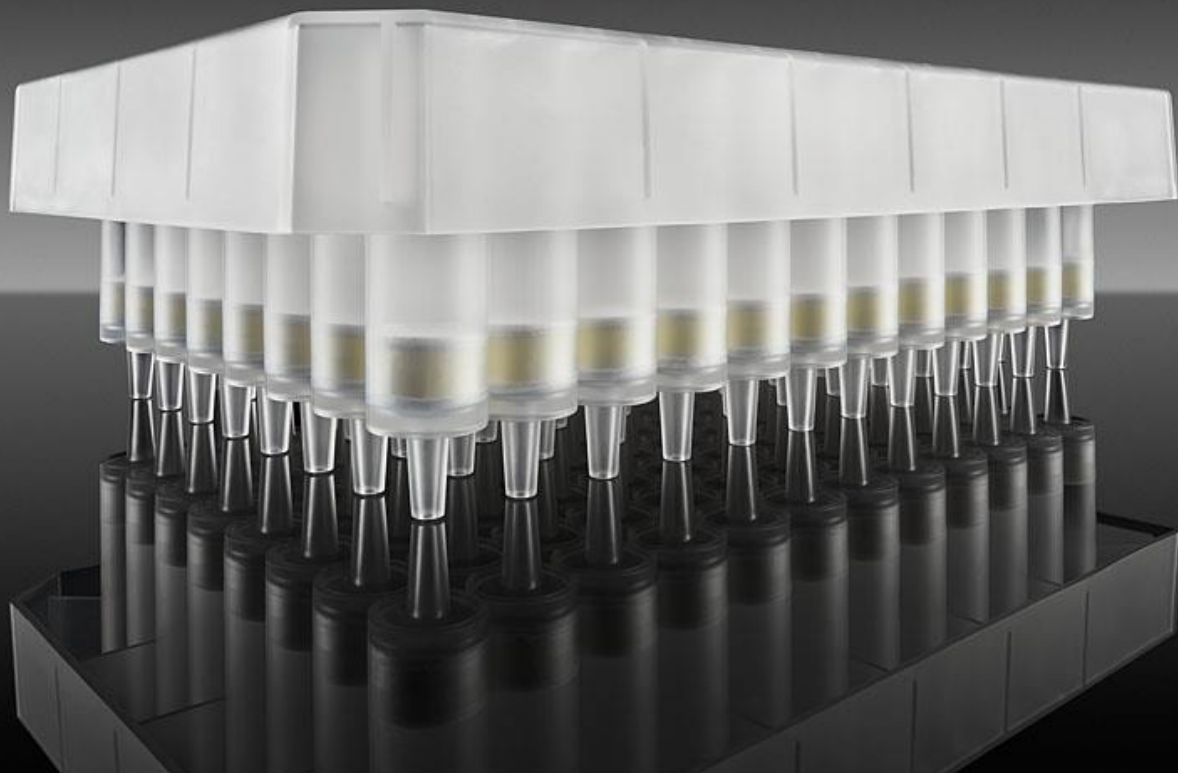
| Analyte            | CH <sub>3</sub> OH | CH <sub>3</sub> CN | 0.1% HCOOH<br>-CH <sub>3</sub> OH | 0.1% HCOOH<br>-CH <sub>3</sub> CN | 1% HCOOH<br>-CH <sub>3</sub> CN | 0.1% HCOONH <sub>4</sub><br>-CH <sub>3</sub> OH | 1% HCOONH <sub>4</sub><br>-CH <sub>3</sub> OH |
|--------------------|--------------------|--------------------|-----------------------------------|-----------------------------------|---------------------------------|---|---|
| 1. Acetaminophen   | 116.2              | 92.3               | 106.9                             | 103.5                             | 102.2                           | 2.7   | 92.2  |
| 2. Scopolamine     | 75.2               | 87.4               | 86.0                              | 87.8                              | 83.6                            | 0.9   | 68.9  |
| 3. Theophylline    | 104.2              | 95.7               | 107.2                             | 96.3                              | 94.1                            | 5.1   | 94.9  |
| 4. Caffeine        | 97.1               | 98.2               | 106.4                             | 97.7                              | 90.6                            | 6.0   | 98.3  |
| 5. Metoprolol      | 90.7               | 98.4               | 89.3                              | 90.8                              | 95.5                            | 1.0   | 76.8  |
| 6. Propranolol     | 88.2               | 97.4               | 92.6                              | 106.4                             | 102.9                           | 1.5   | 78.3  |
| 7. Diphenhydramine | 89.1               | 106.6              | 92.8                              | 106.3                             | 102.5                           | 2.7   | 75.7  |
| 8. Doxepin         | 76.9               | 101.6              | 86.1                              | 107.2                             | 97.7                            | 1.0   | 64.7  |
| 9. Imipramine      | 80.9               | 105.8              | 82.1                              | 99.9                              | 99.7                            | 1.0   | 72.8  |
| 10. Warfarin       | 85.4               | 98.6               | 84.5                              | 103.1                             | 108.4                           | 1.1   | 80.6  |
| 11. Amitriptyline  | 60.6               | 103.9              | 54.8                              | 86.9                              | 90.9                            | 0.9   | 73.2  |
| 12. Ketoprofen     | N.D.               | 39.3               | 1.4                               | 98.1                              | 108.6                           | 1.9   | 39.2  |
| 13. Diclofenac     | 8.4                | 89.2               | 4.4                               | 102.9                             | 104.9                           | 1.1   | 67.9  |

## Ordering Information

---

### FastRemover for Phospholipid

| Description                                       | Qty   | Cat. No.   |
|---|-------|------------|
| FastRemover for Phospholipid (0.2 $\mu\text{m}$ ) | 1 pcs | 7510-11021 |



## EVSecond

### Exosome Purification Columns

Recent studies have reported significant roles of extracellular vesicle "Exosome" in development and progression of various diseases including cancer metastasis. Therefore exosomes are considered as attractive targets for biomarkers and drug development. However, it remains difficult to isolate high-purity exosomes from biological fluids such as serum. EVSecond is a size exclusion chromatography open column optimized for effective purification of exosomes. Highly-purified exosomes can be easily collected from serum, plasma, or cell culture supernatant.

### Features

- Simple gravity-flow handling without ultracentrifugation.
- EVSecond-purified exosomes possess efficient purity for comprehensive miRNA, proteome, and metabolome analysis.
- Exosomes are gently eluted in PBS without structural damage, allowing re-administration experiments of collected exosomes to cells or animals.

### Advantages Over Traditional Procedures

- Much higher-purity exosomes can be obtained compared to ultracentrifugation or polymer precipitation methods.
- Unlike immuno-affinity purification using anti-tetraspanin antibodies, whole exosomes can be collected regardless of surface antigen profiles.

### Typical Protocol using EVSecond

Gravity-flow is applied to each step.

1. Set columns on GL-SPE EXO fraction rack after mixing beads gently and thoroughly.



2. Block beads with 0.22 µm filter-purified FBS.



3. Equilibrate columns with PBS.



4. Load 50-700 µL 0.22 µm filter-purified samples (serum, plasma, or cell culture supernatant).

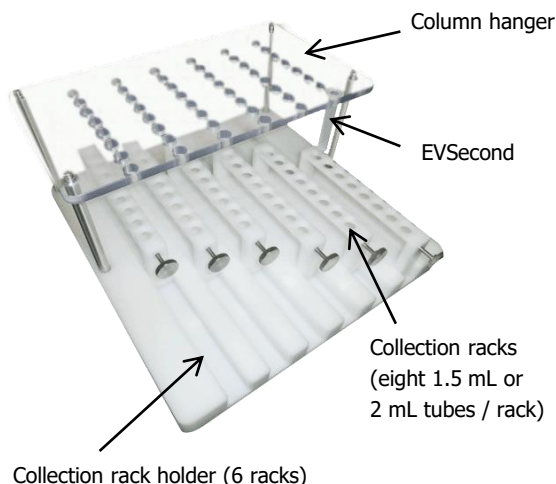


5. Load PBS and collect appropriate fractions including exosomes.

\* Exosome-containing fractions can be identified by western blotting or ELISA experiments detecting tetraspanins (CD9, CD63, CD81, etc.)

#### GL-SPE EXO Fraction Rack

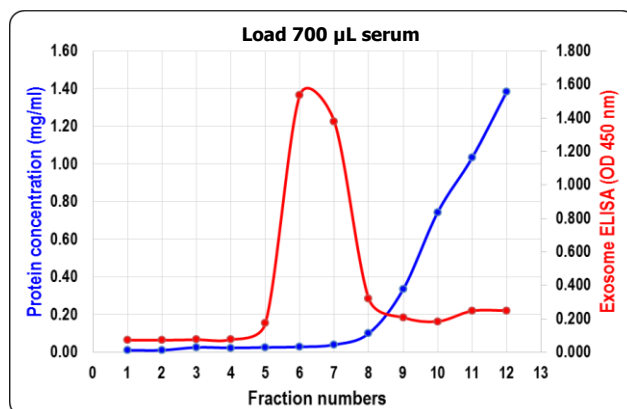
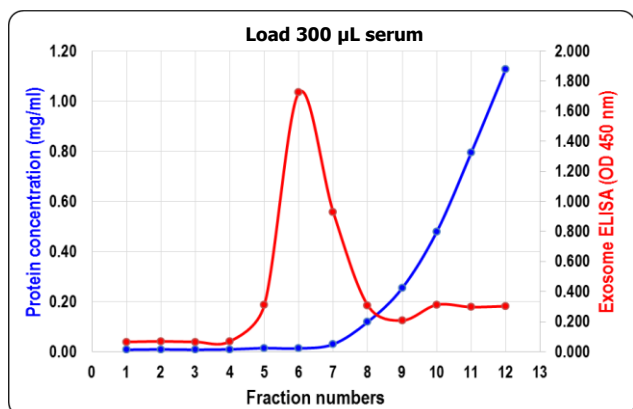
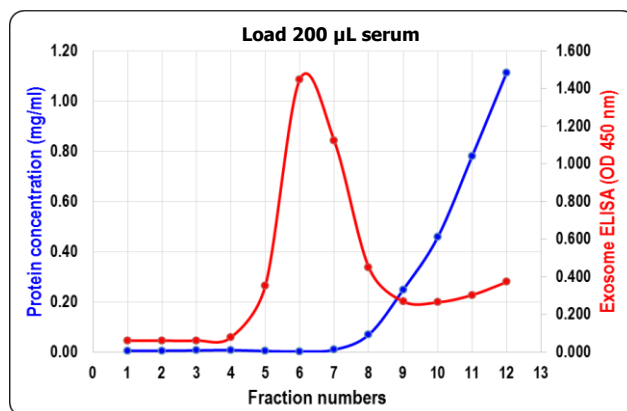
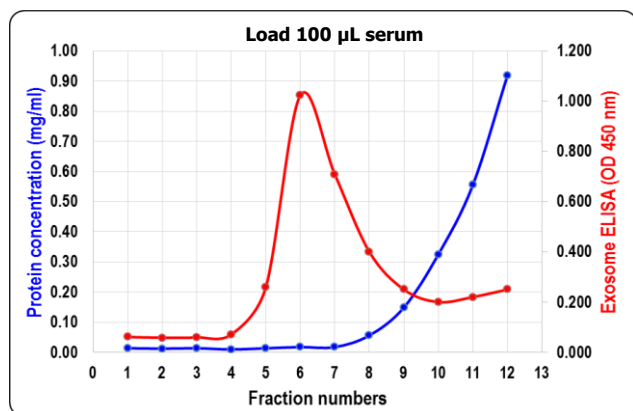
Open column rack optimized for EVSecond. It helps smooth column handling and fractionation.



Dimensions: 300(W) × 300(D) × 150(H) mm

## Purification of Exosomes from Human Serum

A large amount of free proteins, metabolites, and nucleotides are involved in serum samples. Insufficient purification of exosomes often causes co-detection of non-exosomal components, leading to incorrect quantification results in omics studies. Exosomes were isolated from 100, 200, 300, or 700  $\mu\text{L}$  of human serum using EVSecond method. Exosomes were clearly separated from serum free proteins such as albumin or immunoglobulins.



(100  $\mu\text{L}$  / fraction)

Red line: CD9-CD9 exosome sandwich ELISA (detecting exosomes)

Blue line: Bradford assay (detecting serum free proteins)

Data provided by Dr. Koji Ueda from Graduate School of Frontier Sciences, The University of Tokyo

## Ordering Information

### EVSecond

| Description              | Qty    | Cat. No.   |
|--------------------------|--------|------------|
| EVSecond                 | 10 pcs | 5010-21390 |
|                          | 25 pcs | 5010-21392 |
| GL-SPE EXO Fraction Rack | 1 set  | 5010-50450 |

EVSecond was developed based on the cooperation from Dr. Koji Ueda from Graduate School of Frontier Sciences, The University of Tokyo.

## MonoFas DNA Purification Kit I

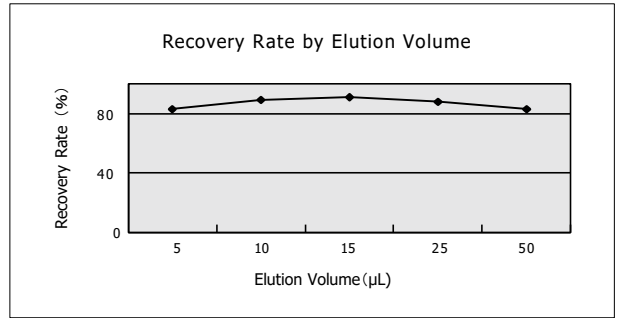
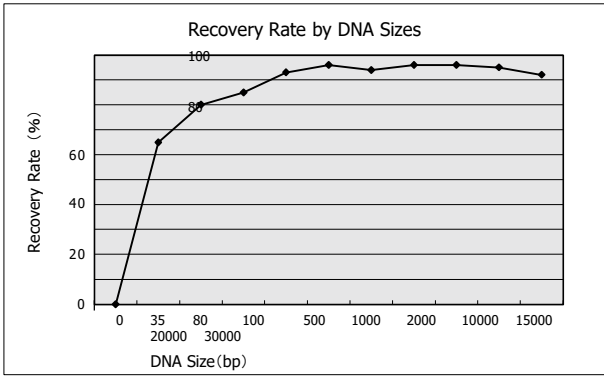
### DNA Extraction & Purification

MonoFas DNA Purification Kit I purifies DNA from PCR products and agarose gels. Purified DNA can be used for sequencing, cloning/ligation, restriction digests, etc.

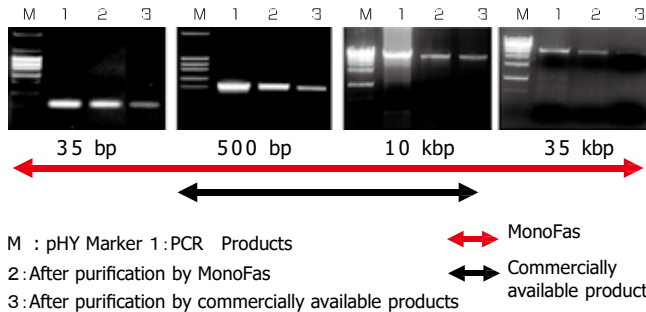
### Features

- Multiple Roles – Purifies DNA from PCR matrices or agarose gels.
- Rapid purification in about 4 minutes.
- High recovery rates even from sample volumes as low as 10  $\mu$ L.
- Purify DNA fragments from 35 bp to 35 kbp.

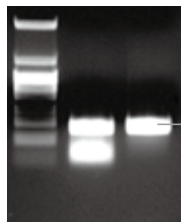
#### High Recovery from Trace Volume Samples



#### Purify DNA fragments from 35bp up to 35kbp



#### Large Quantities of Agarose Gels can be Processed



MonoFas routinely extracts DNA from up to 1 g of agarose gel at once.

400 bp  
 M : pHY Marker  
 1 : Unpurified PCR products 2 :  
 Purified from agarose gel  
 (MonoFas DNA Purification Kit I)



## Specifications

| Description                    | Purification from PCR products | Extraction from agarose gel |
|--------------------------------|--------------------------------|-----------------------------|
| Time                           | 4 mins                         | 9 mins                      |
| Maximum DNA Binding Amount     | <10 µg                         | <10 µg                      |
| Maximum Agarose Gel Throughput | —                              | <1 g                        |
| Minimum Elution Amount         | 10 µL                          | 10 µL                       |
| Column Volume                  | 1 mL                           | 1 mL                        |
| Processable DNA Range          | 35 bp - 35 kbp                 | 35 bp - 35 kbp              |
| Recovery Rate                  | >85 % (100 bp - 5 kbp)         | >80 % (100 bp - 5 kbp)      |
|                                | >60 % (5 kbp - 35 kbp)         | >50 % (5 kbp - 35 kbp)      |
| Primer Removal Percentage      | 95 %                           | —                           |

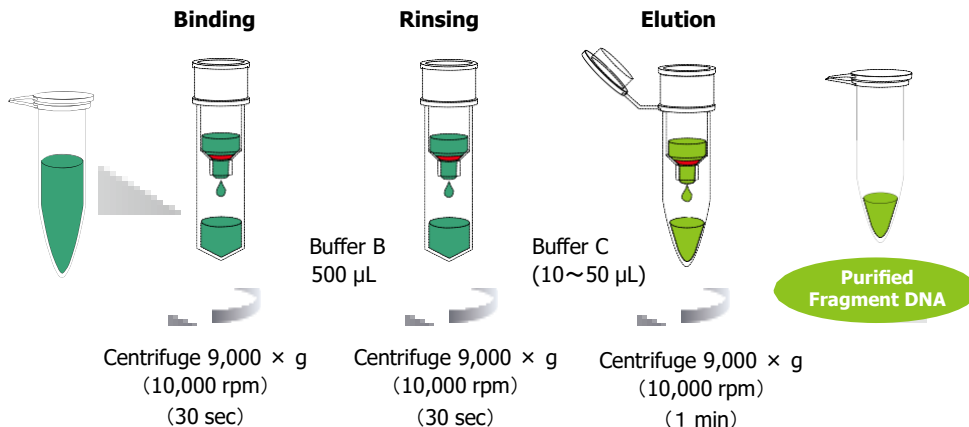
## Typical Protocol using MonoFas DNA Purification Kit I

### 1. Purification of PCR products

Load the PCR products and Buffer A (10 times the volume of PCR products) into the spin column.

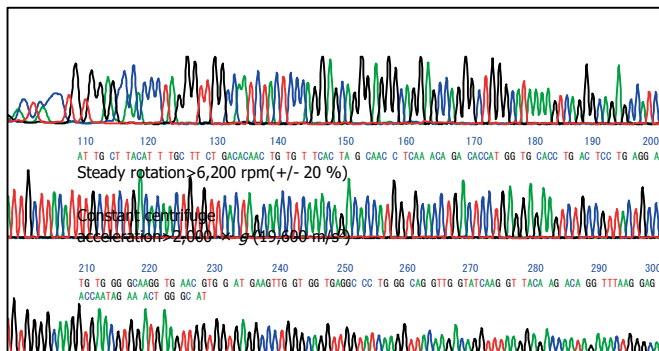
### 2. Extraction from agarose gel

Add the Buffer A (same volume as the agarose gel), dissolve for 5 mins at 60 °C then load it into the spin column.



## Accurate Sequence Analysis

Greater than 98 % precision by fluorescent sequence method and more than 500 bases can be analyzed.



Condition: Cycle sequencing method with Big Dye Terminator v3.1 manufactured by ABI  
Model: ABI 3730 Genetic Analyzer

## Easy Centrifuge Operation



2 mins : DNA purification from PCR products  
7 mins : DNA purification from agarose gel

## Ordering Information

---

### MonoFas DNA Purification Kit I

| Description                           | Qty     | Cat. No.   |
|---------------------------------------|---------|------------|
|                                       | 50 pcs  | 5010-21530 |
| MonoFas DNA Purification Kit1, EXPORT | 100 pcs | 5010-21531 |
|                                       | 250 pcs | 5010-21532 |



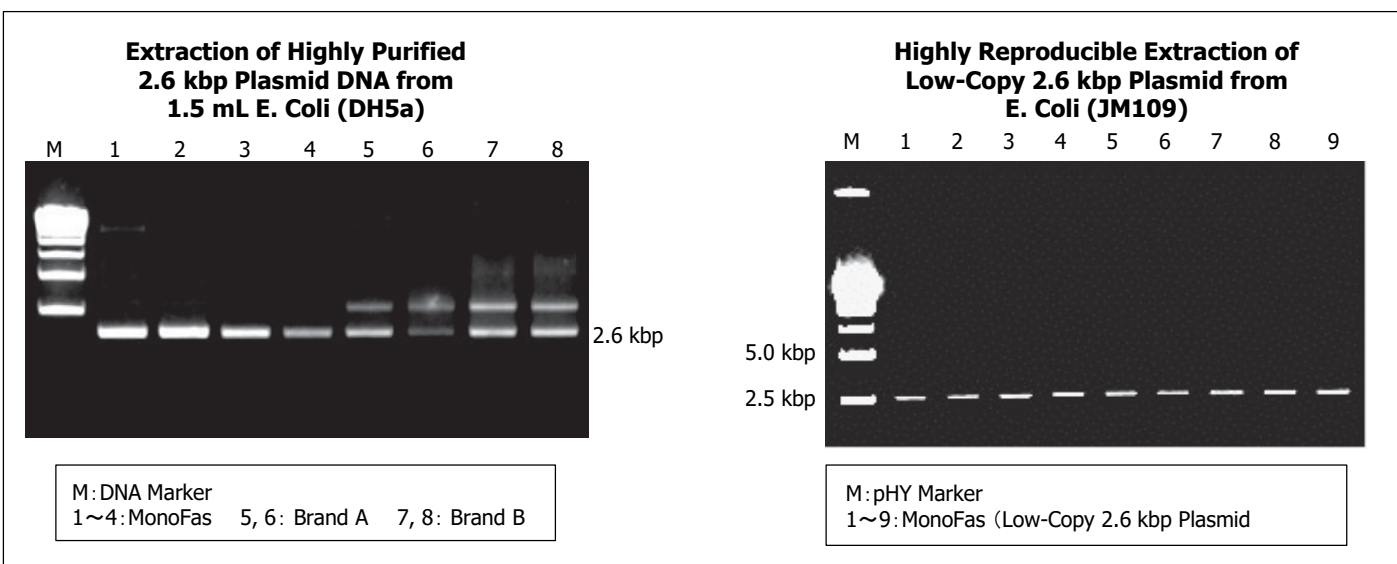
## MonoFas DNA Purification Kit III

### Plasmid DNA Extraction from E.coli

MonoFas Plasmid Extraction Kit III is designed to purify plasmid DNA from E. Coli cultures. The extracted plasmid DNA can be used without further purification for sequence analysis, restriction digestion, cloning/ligation, etc.

### Features

- Rapid Plasma Purification in 8 minutes.
- Highly Purified Plasmid DNA.
- Wide Variety of Functional Groups
- BAC Clone Purification can also be performed.
- Stable Recovery Rate



### Ordering Information

#### MonoFas DNA Purification Kit III

| Description                           | Qty     | Cat. No.   |
|---------------------------------------|---------|------------|
| MonoFas DNA Purification Kit3, EXPORT | 50 pcs  | 5010-21533 |
|                                       | 100 pcs | 5010-21534 |
|                                       | 250 pcs | 5010-21535 |

## **Other MonoFas Series**

### **MonoFas BAC Extraction Kit V**

**Efficient Isolation of BAC, Cosmid DNA**

---

### **MonoFas Cultured Cell DNA Extraction Kit VI**

**Isolation of High Yields of Pure DNA in 5 mins without Desalting & Damaging DNA**

---

### **MonoFas DNA Bacteria Extraction Kit VII**

**DNA Extraction from Gram Positive & Negative Bacteria**

---

### **MonoFas DNA Buccal Swabs Extraction Kit VIII**

**DNA Extraction from Buccal Swabs without Desalting**

---

### **MonoFas DNA Mouse and Rat Tail Extraction Kit IX**

**Rapid Extraction of DNA from Mouse & Rat Tails**

---

### **MonoFas DNA Stool Extraction Kit X**

**Stool Extraction Kit Designed to Extract Bacteria & Epithelial Tissues in Intestine**

---

### **MonoFas DNA Processed Food Extraction Kit XI**

**Rapid Extraction of DNA from Processed Food**

---

### **MonoFas Plant DNA Extraction Kit XII**

**Rapid Extraction of DNA from Processed Food**

---

For products details, please inquire.

## InertSearch Application Notes

Access to the latest pharmaceutical, life science,  
environmental and food applications at

[www.glsciences.com/tech/inertsearch](http://www.glsciences.com/tech/inertsearch)



# Worldwide Ordering Information

## GL Sciences, Inc. USA

4733 Torrance Blvd. Suite 255  
Torrance, CA 90503  
Phone: 310-265-4424  
Fax: 310-265-4425  
Email: [info@glsciencesinc.com](mailto:info@glsciencesinc.com)  
Web: [www.glsciencesinc.com](http://www.glsciencesinc.com)

## GL Sciences B.V.

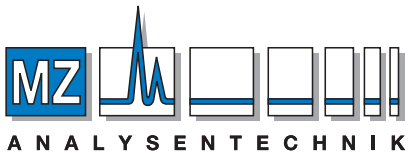
De Sleutel 9  
5652 AS Eindhoven  
The Netherlands  
Phone: +31 (0)40 254 95 31  
Email: [info@glsciences.eu](mailto:info@glsciences.eu)  
Web: [www.glsciences.eu](http://www.glsciences.eu)

## International Distributors

Visit our Website at  
[www.glsciences.com/distributors](http://www.glsciences.com/distributors)

## GL Sciences, Inc. Japan

22-1 Nishishinjuku 6-Chome  
Shinjuku-ku, Tokyo,  
163-1130, Japan  
Phone: +81-3-5323-6620  
Fax: +81-3-5323-6621  
Email: [world@gl.co.jp](mailto:world@gl.co.jp)  
Web: [www.glsciences.com](http://www.glsciences.com)



**AUTHORIZED DISTRIBUTOR**

MZ-Analysentechnik GmbH  
Barcelona-Allee 17 • D-55129 Mainz

Tel +49 6131 880 96-0  
Fax +49 6131 880 96-20

e-mail: [info@mz-at.de](mailto:info@mz-at.de)

[www.mz-at.de](http://www.mz-at.de)

The specification are subject to change without notice due to continual improvements.