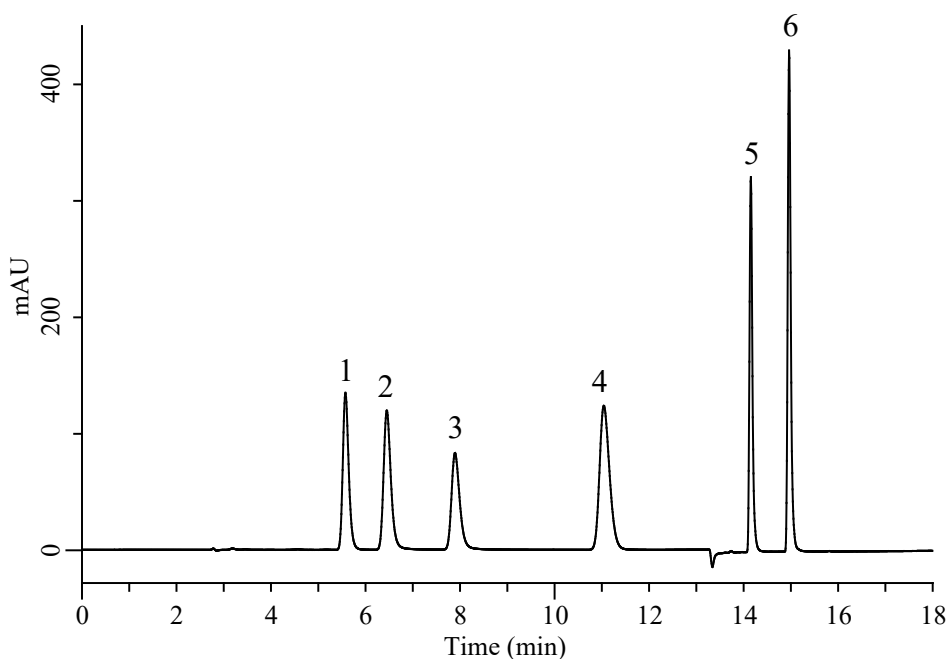


# InertSearch for LC

Inertsil Applications

## Analysis of ATP related compounds and Cyclic nucleotides (InertSustain C30)

Data No. LB820- 7111



### Conditions

**System** : Chromaster HPLC system (HITACHI)  
**Column** : InertSustain C30 (GL Sciences Inc.)  
(5  $\mu$  m, 250 x 4.6 mm I.D.)  
**Column Cat. No.** : 5020-17145  
**Eluent** : A) CH<sub>3</sub>CN  
B) 20 mM K<sub>2</sub>HPO<sub>4</sub> in H<sub>2</sub>O (pH7.0, H<sub>3</sub>PO<sub>4</sub>)

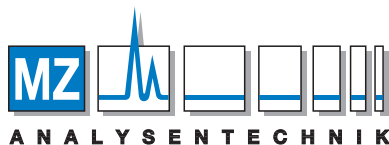
### Analyte:

1. GMP
2. 5'-ATP
3. 5'-ADP
4. 5'-AMP
5. cGMP
6. cAMP

(100 mg/L each)

Time (min)	A (vol%)	B (vol%)
0.0	0	100
7.0	0	100
18.0	40	60

**Flow Rate** : 1.0 mL/min  
**Col. Temp.** : 40 °C  
**Detection** : UV 260 nm  
**Injection Vol.** : 10  $\mu$  L  
**Sample** : Standard



AUTHORIZED DISTRIBUTOR

MZ-Analysentechnik GmbH  
Barcelona-Allee 17 • D-55129 Mainz  
Tel +49 6131 880 96-0  
Fax +49 6131 880 96-20  
e-mail: info@mz-at.de  
www.mz-at.de

GL Sciences