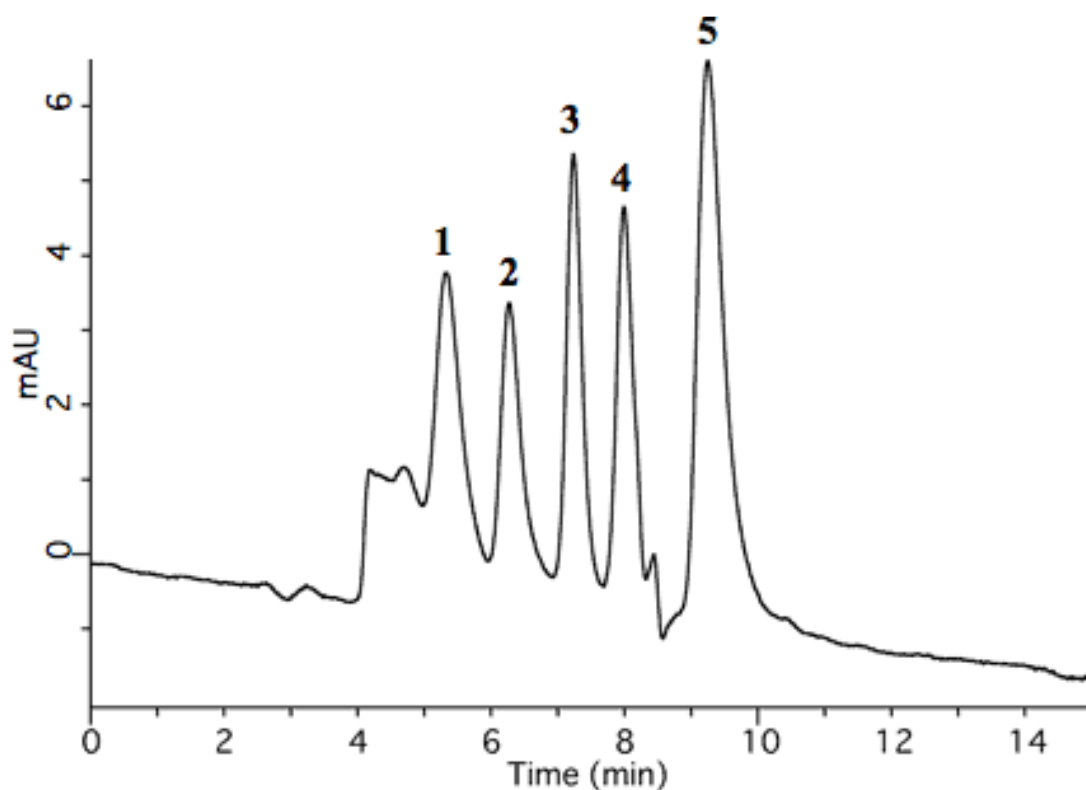


Analysis of Protein (SEC mode)

Data No. LA592-0000



System : GL-7400 system

Column : Inertsil WP300 Diol (5 µm, 250 x 7.6 mm I.D.)

Column Cat. No. : 5020-05792

Eluent : 0.2 M NaCl, 0.1 M NaH₂PO₄ (pH 6.7; Na₂HPO₄)

Flow rate : 1.0 mL/min.

Col. Temp. : 35 °C

Detection : UV 280 nm (GL-7450 UV Detector)?

Injection Vol. : 10 µL

Sample : Proteins

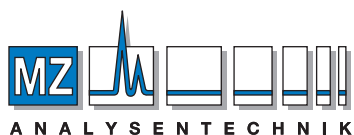
Solutes : 1. Ferritin M.W. 440,000 (40µg/mL)

2. Transferrin, human M.W. 80,000 (260µg/mL)

3. Trypsinogen M.W. 25,000 (160µg/mL)

4. Lysozyme M.W. 14,300 (80µg/mL)

5. Insulin M.W. 6,000 (460µg/mL)



AUTHORIZED DISTRIBUTOR

MZ-Analysentechnik GmbH, Barcelona-Allee 17• D-55129 Mainz

Tel +49 6131 880 96-0, Fax +49 6131 880 96-20

e-mail: info@mz-at.de, www.mz-at.de