

InertSearch™ for LC

Inertsil® Applications

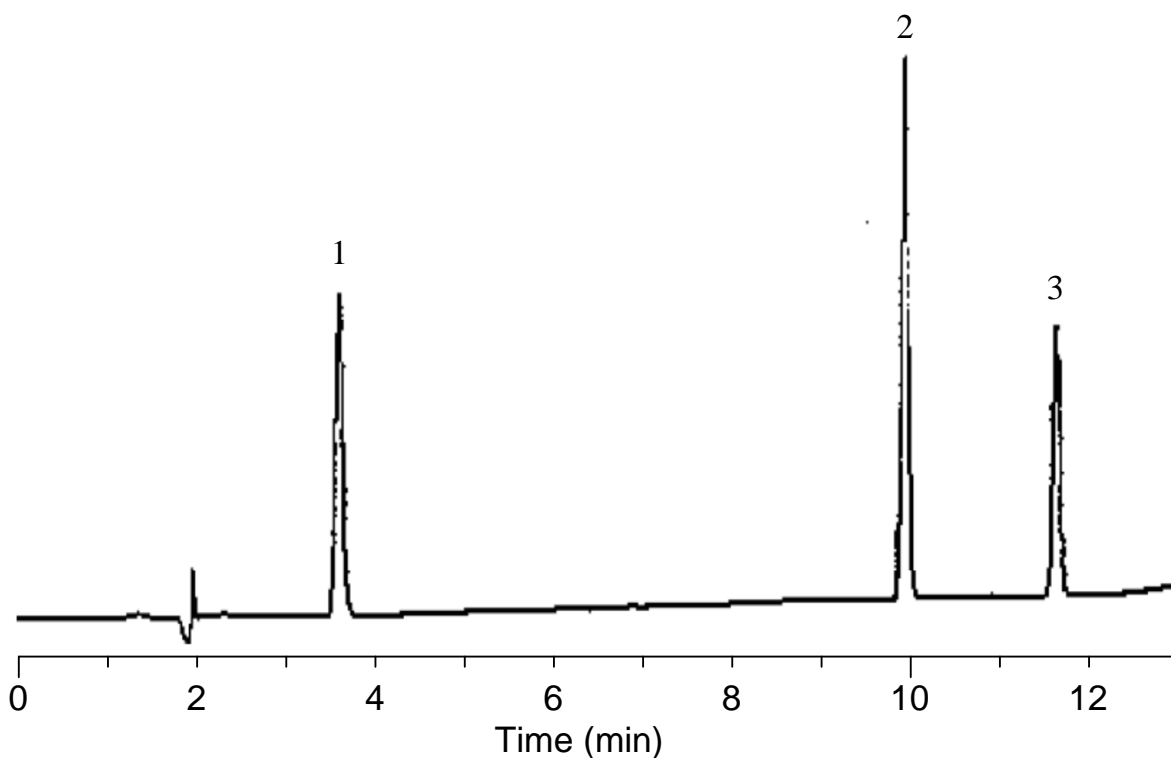
Analysis of Dipeptide type sweeteners

Data No. LL009-000

The original paper was published in Japanese Journal of Food Chemistry and Safety, Vol. 21(2), 115-120(2014)

Provided by Dr. Yoshimi Kitada, Graduate School of Health Science, Kio University, Japan

Author name : Noriri Kitano; Hanayo Tomioka; Yoshimi Kitada
Data source : Japanese Journal of Food Chemistry and Safety, Vol. 21(2), 115-120(2014)
Year : 2014

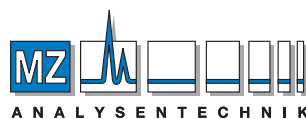


Conditions

Column : Inertsil ODS-4
(5 μ m, 150 x 4.0 mm I.D.)
Column Cat. No. : 5020-03935
Eluent : A) CH₃CN
B) 10 mM NaH₂PO₄ (pH 3.5, H₃PO₄)
A/B = 20/80 – 15min – 50/50
Flow Rate : 1.0 mL/min
Col. Temp. : 40 °C
Detection : UV 210 nm
Injection Vol. : 20 μ L

Analyte :

1. Aspartame
2. Advantame
3. Neotame
(10 mg/L each)



AUTHORIZED DISTRIBUTOR

MZ-Analysentechnik GmbH
Barcelona-Allee 17 • D-55129 Mainz
Tel +49 6131 880 96-0
Fax +49 6131 880 96-20
e-mail: info@mz-at.de
www.mz-at.de