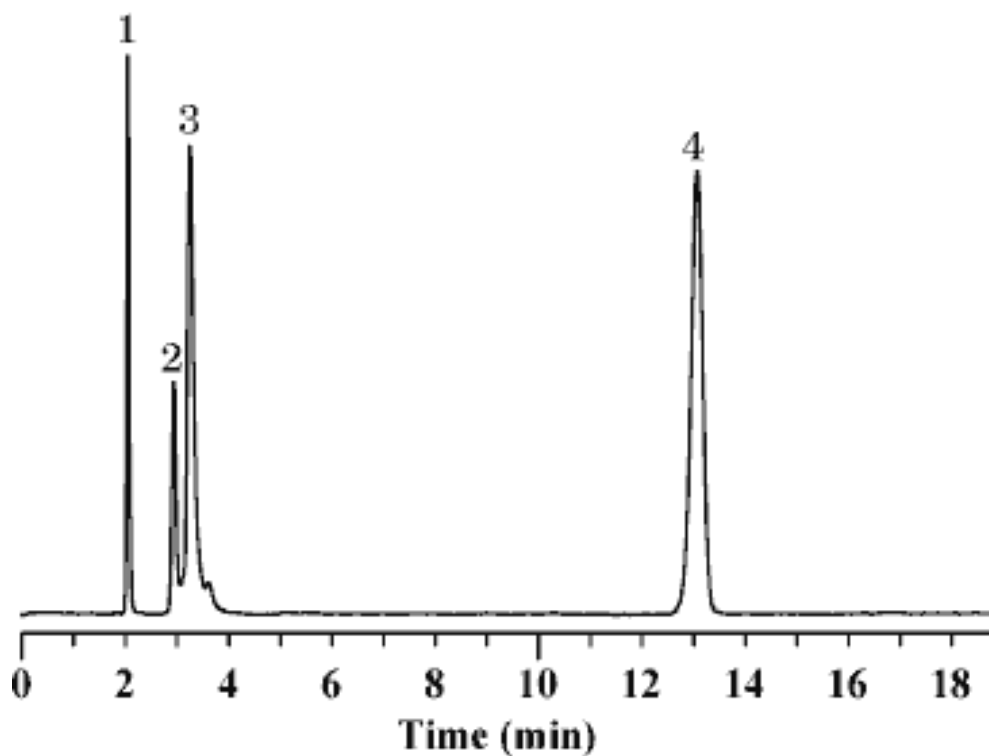


InertSearch™ for LC

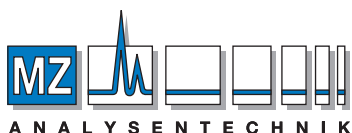
Inertsil® Applications

42. Saccharin

Data No. LA096-0000



Column	: Inertsil NH2 5µm 250 × 4.6 mm I.D.	Solutes	: 1. Aspartame (0.125 mg/mL) 2. Stevioside (0.125 mg/mL) 3. Glycyrrhizic acid (0.125 mg/mL) 4. Saccharin (0.125 mg/mL)
Column Cat. No.	: 5020-05546		
Eluent	: 1.0 % H ₃ PO ₄ /CH ₃ OH = 60/40		
Flow rate	: 1.0 mL/min.		
Col. Temp.	: 40°C		
Detection	: UV 210 nm		
Injection Vol.	: 1 µL		
Sample	: Food Additives		



AUTHORIZED DISTRIBUTOR

MZ-Analysentechnik GmbH, Barcelona-Allee 17 • D-55129 Mainz
Tel +49 6131 880 96-0, Fax +49 6131 880 96-20
e-mail: info@mz-at.de, www.mz-at.de