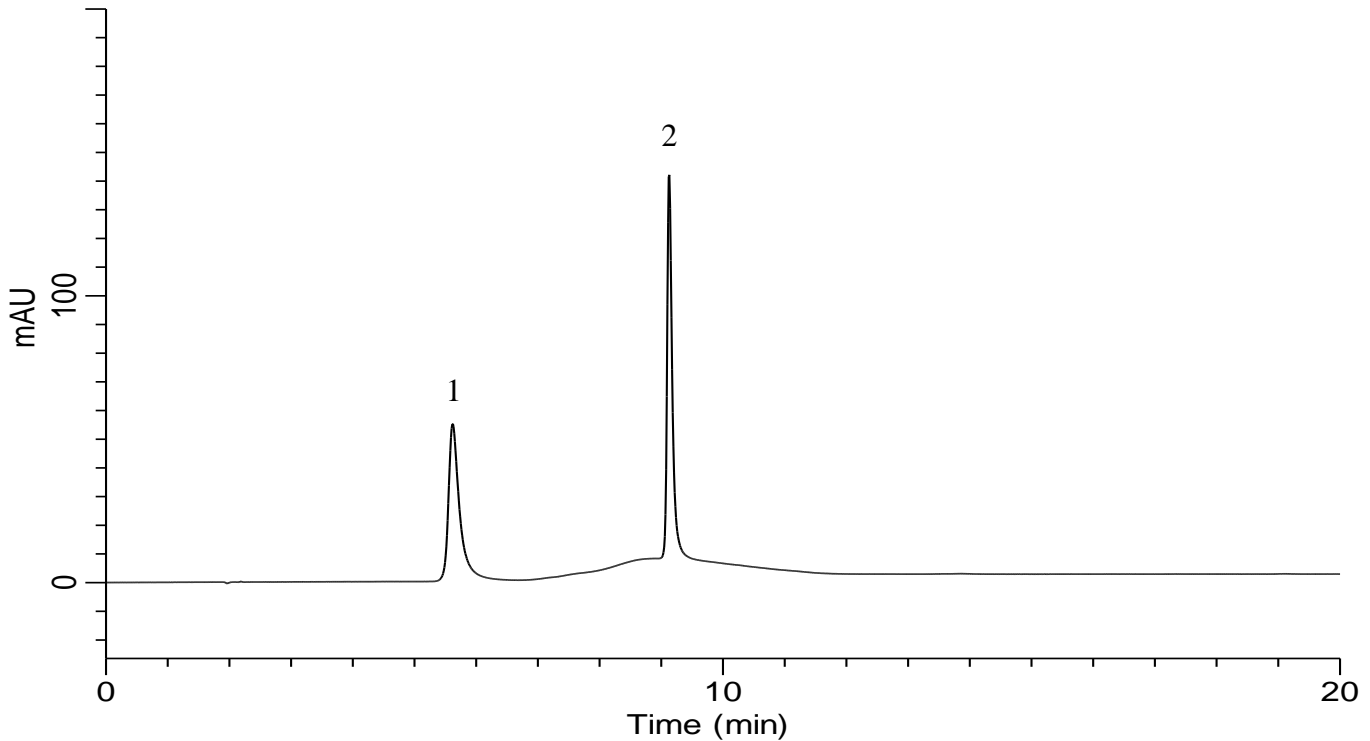


# InertSearch for LC

Inertsil Applications

## Analysis of Nitrosoamines (NDMA, NDEA)

Data No. LB668-0952



### Conditions

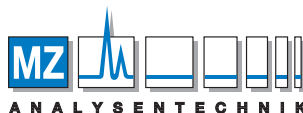
**System** : GL7700 HPLC system  
**Column** : InertSustain PFP (3  $\mu$  m HP, 150 x 4.6 mm I.D.)  
**Column Cat. No.** : 5020-87933  
**Eluent** : A) 0.1 % HCOOH, 10 mM HCOONH<sub>4</sub> in CH<sub>3</sub>OH  
B) 0.1 % HCOOH, 10 mM HCOONH<sub>4</sub> in H<sub>2</sub>O

Time(min)	A (vol%)	B (vol%)
0.0	5	95
3.0	5	95
5.0	50	50
20	50	50
20.1	5	95
35	5	95

### Analyte:

1. NDMA (N-Nitrosodimethylamine)  
2. NDEA (N-Nitrosodiethylamine)  
100 mg/L each

**Flow rate** : 1.00 mL/min  
**Col. Temp.** : 40 °C  
**Detection** : UV 254 nm (UV7751 UV Detector)  
**Injection Vol.** : 5  $\mu$  L  
**Sample** : Standard



### AUTHORIZED DISTRIBUTOR

MZ-Analysentechnik GmbH, Barcelona-Allee 17 • D-55129 Mainz  
Tel +49 6131 880 96-0, Fax +49 6131 880 96-20  
e-mail: info@mz-at.de, www.mz-at.de

GL Sciences