

DURAN®



EVO LUTION ARY BOTTLE SYSTEM



DRIVEN BY YOUR NEEDS



DURAN
WHEATON
KIMBLE

Excellence in your hands

DURAN® EVOLUTIONARY BOTTLE SYSTEM



TRADITIONAL
DURAN® REAGENT BOTTLE

THE EVOLUTION STARTS HERE

The DURAN® ORIGINAL GL 45 laboratory bottle evolved from the **DURAN® REAGENT BOTTLE**. It was made of borosilicate glass 3.3, a special glass invented by Otto Schott in 1887 and registered in 1938 under the trade name DURAN®.

The evolution continued ... using high-quality DURAN® borosilicate glass 3.3 we have developed an extensive bottle system with 12 different bottle types, which cover almost all our customers' needs.

The bottles come with a comprehensive range of caps, connection systems and accessories that allow you to put together your own individual system for high-precision applications.



ORIGINAL
DURAN® ORIGINAL GL 45

The gold standard of multi-functional laboratory bottles made of a high-purity borosilicate glass 3.3. A combination of high-performance materials and robust design provides a long usable working life.



SMART
DURAN® YOUTILITY®

Retaining the best features of the original bottle, this next-generation of laboratory bottles offers improved ergonomic features, user safety, and a dedicated system of useful components.



UV-PROTECTED
DURAN® AMBER

The additional of a fused, external amber layer ensures the contents are protected from the effects of photodegradation. The protection meets international standards and lasts the lifetime of the bottle.



TILTING
DURAN® TILT

The smart, reusable bottle for cell culture media preparation. The unique design offers two positions: upright for filter sterilization or storage, and tilted at 45° for pipetting in biosafety cabinets.



PURE
DURAN® PURE

A range of high-quality bottles and closures developed for the needs of the pharmaceutical industry. The bottles meet the requirements of the international pharmacopeias and are available with the certificates required by the regulatory authorities.



EFFICIENT
DURAN® HPLC

The optimized conical design allows the most efficient delivery of mobile phase to HPLC analyzers. Graduated for easier volume determination. The virtually inert glass prevents leaching of extractables.



PROTECTIVE
DURAN® PROTECT

Combining the best of both worlds, the virtually inert glass protects the contents from contamination, while the external plastic safety coating protects both the user and contents from accidents.



SPACE-SAVING
DURAN® SQUARE

Close and efficient packing is the benefit of the space saving shape. Ideal for the shipping and storage of high-demand materials. For reagent supply to instruments where bench space is at a premium.



STRONGER
DURAN® PRESSURE PLUS+

A stronger-built bottle that offers a safer option for laboratory applications involving vacuum or moderate pressure. Safely extends the range of possible applications for glass laboratory bottles.



EXTENDED
DURAN® GLS 80®

All the features of the ORIGINAL GL 45 DURAN® bottles, with the added benefits of a larger mouth. Hassle-free filling, emptying, and cleaning, are just some of the benefits of having easier access.



SWIRLED
DURAN® BAFFLED

The ultimate bottle for high-efficiency mixing combined with the benefits of the wider GLS 80® mouth. The built-in glass baffles improve top-to-bottom circulation and radial mixing.



ISOLATED
DURAN® DOUBLE WALLED

The additional of an external glass jacket to the wide mouth GLS 80® bottle, allows the contents to be conveniently heated or cooled without risk of cross contamination.

THE VARIETY OF DURAN®

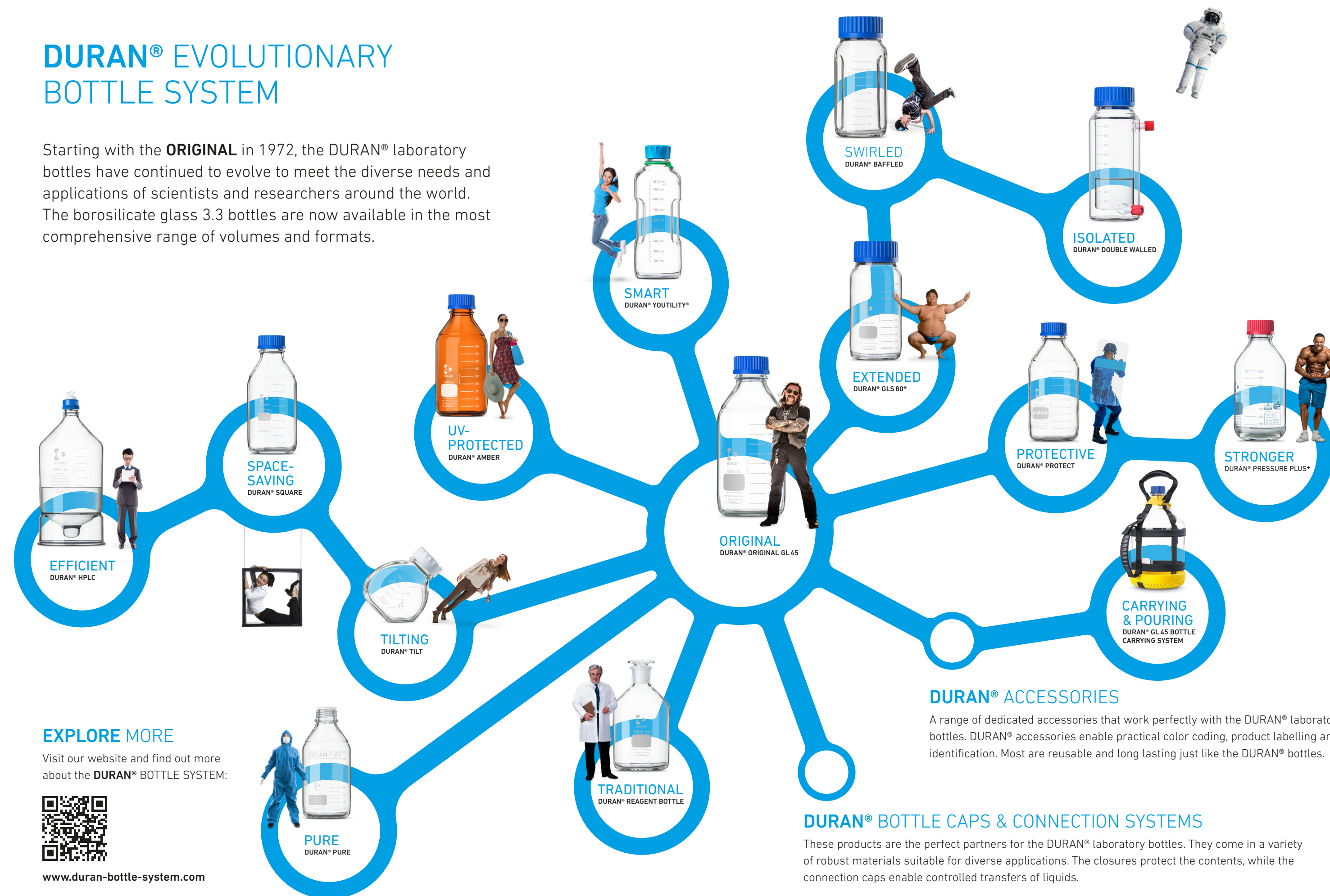
The **DURAN®** evolutionary process is, like all others, characterized by diversification and branching. At its core is the ORIGINAL GL 45 laboratory bottle, made of borosilicate glass 3.3 with easy-to-read scale and large labelling field for easy marking, in fired-on, highly durable white ceramic.

Borosilicate glass 3.3 is an attractive material that offers inexhaustible design possibilities. Very high chemical resistance, virtually inert behaviour, transparency, a high usage temperature, minimal thermal expansion and the resulting high resistance to thermal shock are its most significant properties.

Since the introduction of the GL 45 laboratory bottle in 1972, DURAN® bottles have been consistently developed and improved. A broad range of high-quality products and systems is now available. The numerous variants and the comprehensive original equipment from DURAN® allow almost unlimited applications.

DURAN® EVOLUTIONARY BOTTLE SYSTEM

Starting with the **ORIGINAL** in 1972, the DURAN® laboratory bottles have continued to evolve to meet the diverse needs and applications of scientists and researchers around the world. The borosilicate glass 3.3 bottles are now available in the most comprehensive range of volumes and formats.



DURAN® ACCESSORIES

A range of dedicated accessories that work perfectly with the DURAN® laboratory bottles. DURAN® accessories enable practical color coding, product labelling and identification. Most are reusable and long lasting just like the DURAN® bottles.

DURAN® BOTTLE CAPS & CONNECTION SYSTEMS

These products are the perfect partners for the DURAN® laboratory bottles. They come in a variety of robust materials suitable for diverse applications. The closures protect the contents, while the connection caps enable controlled transfers of liquids.

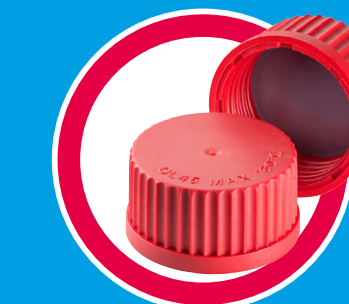
DURAN® BOTTLE CAPS & CONNECTION SYSTEMS

STANDARD



These reliable components are made of food-grade polypropylene (PP) and are suitable for many laboratory applications. Our screw caps and pouring rings are fully compatible with DIN GL bottle threads.

HIGH PERFORMANCE



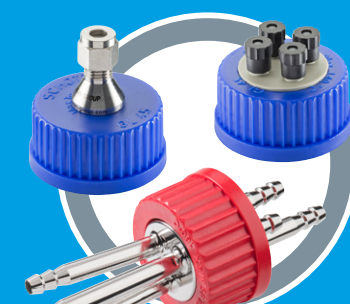
For more demanding processing conditions, or when the product requires a higher level of protection from the environment or contamination. Ideal for demanding applications in the pharmaceutical industry.

STEAM STERILIZATION



Membrane caps are recommended when sterilising media. These components improve the safety and ease-of-use of the laboratory bottles during autoclaving or hot-air sterilization, and protect the contents from contamination.

CONNECTION



The robust and durable DURAN® tubing connection systems allow the easy transfer of liquids under controlled conditions, reducing the risk of contamination. Connector elements are also available for probes and stirrers.

SECURITY AND TRANSPORTATION



When extra protection is required to ensure the safety of the contents and users during storage or transport. For example, by blocking ultraviolet light, ensuring contents aren't tampered with or making transport easier and safer.

IDENTIFICATION



The accurate identification of samples and reagents is integral to the scientific process. These components provide simple color coding or labelling of laboratory bottles.



DURAN® GL 45 BOTTLE CARRYING SYSTEM

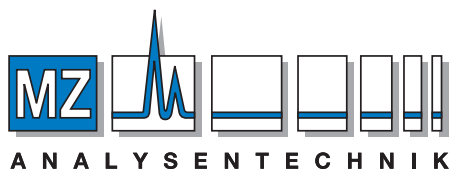
The **new** modular Bottle Carrying System fits standard laboratory bottles that have a GL 45 neck finish and is compatible with four bottle sizes 2, 5, 10 and 20 litres. It is ergonomically designed, offers health & safety benefits to the user and allows easy and safe transport of bottles around the laboratory or production facility. It makes pouring liquids from the larger bottles more comfortable and safer. All materials are fully autoclavable.

EXPLORE MORE

Visit our website and find out more about the **DURAN® BOTTLE SYSTEM**:



www.duran-bottle-system.com



AUTHORIZED DISTRIBUTOR

MZ-Analysentechnik GmbH, Barcelona-Allee 17 • D-55129 Mainz
Tel +49 6131 880 96-0, Fax +49 6131 880 96-20
e-mail: info@mz-at.de, www.mz-at.de

DWK Life Sciences GmbH
Hattenbergstraße 10
55122 Mainz
Germany

Phone: +49 6131 - 1445 4131
Fax: +49 6131 - 1445 4016
sales@DWK-LifeSciences.com
www.DWK-LifeSciences.com

