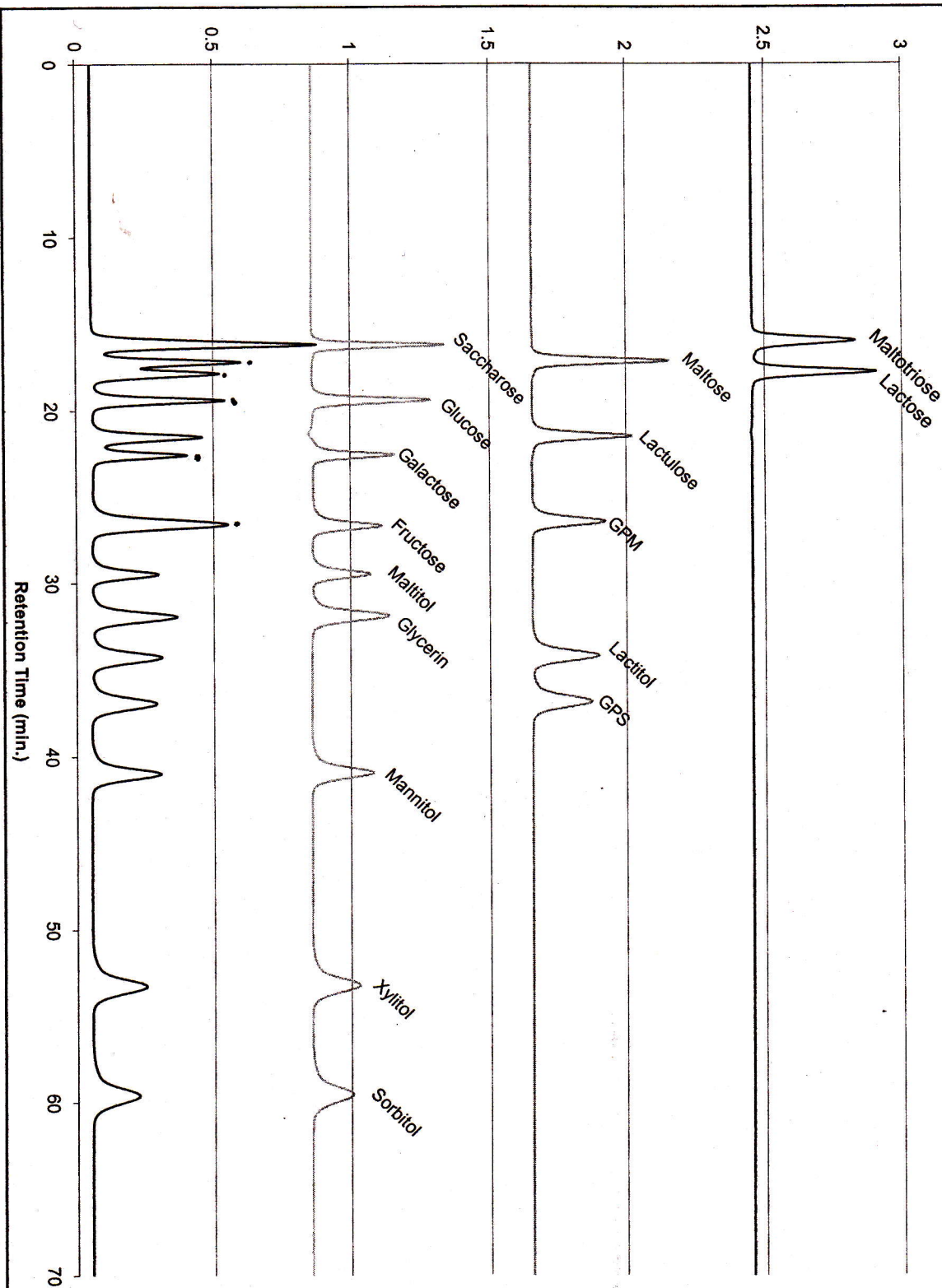


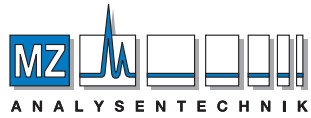
Separation of Sugars & Sugar-alcohols on CHO682 Column

Running conditions: Mobile phase is water; temperature is 80°C; and Flow rate is 0.4 mL/min.



— All 16s
 — Stand. White
 — Stand. Green
 — Stand. Red

Handwritten note:
 HPLC plate 9
 in CHO682 column
 on column HPLC



AUTHORIZED DISTRIBUTOR

MZ-Analysentechnik GmbH
 Barcelona-Allee 17 • D-55129 Mainz
 Tel +49 6131 880 96-0
 Fax +49 6131 880 96-20
 e-mail: info@mz-at.de
 www.mz-at.de