

# Transgenomic Carbohydrate Separations

Transgenomic offers USP and semi-prep columns with over of 29 different carbohydrate columns to best suit your lab's needs.

With a wide variety of cross linkages, metal ligands, bead sizes and column dimensions...Let us help you choose the perfect column(s) for your simplest as well as most complicated separations.

## CARBOsep CHO 682 Column:

Lead Moiety, Best Selectivity

- ✓ Good for Complicated Samples, Excellent for Unknowns

## CARBOsep CHO 87C Column:

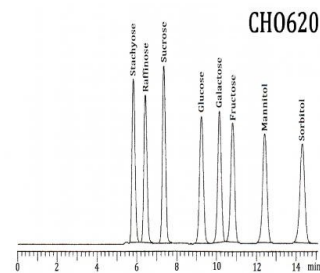
Calcium Moiety, Rugged, Long Lasting,

- ✓ Excellent Selectivity
- ✓ Fast Elution
- ✓ Typical Use: Manufacturing QC and R&D

## CARBOsep CHO 620 Column:

Calcium Moiety, Rugged, Long Lasting,

- ✓ Excellent Selectivity
- ✓ Fast Elution
- ✓ Typical Use: Mono and Oligosaccharides separation and Sugar Alcohols



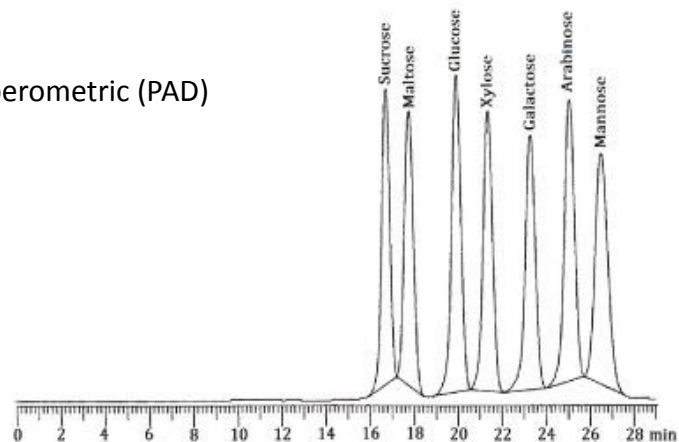
**ANALYTES:** Sugar Alcohols, Mono-, Di-, Tri- and Oligo Saccharides

**SAMPLES:** Beer, Cookies, Fruit Drinks, Manufacturing QC, BioFuel Research & Manufacturing, Dairy Products

**ELUENT:** De-ionized Water & Sodium Hydroxide  
No Solvents Needed  
No Gradients Needed

**DETECTION:** Refractive Index (RI) & Pulse Amperometric (PAD)

## CHO682



Corporate Headquarters  
Transgenomic, Inc.  
12325 Emmet Street, Omaha, NE 68164  
Phone: +1(402) 452.5400 Fax: (402) 452 5401  
Email: [info@transgenomic.com](mailto:info@transgenomic.com)  
On the web at: [www.transgenomic.com](http://www.transgenomic.com)