

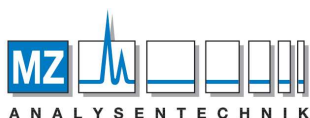


Amino acids analysis in Tilapia sperm

Amino acids plays a valuable role in spermatogenesis, fertilization success and impacts on survival of juvenile fish. This application shows amino acids profile in Tilapia sperm tested by LC-MS MetAmino® kit. The data give better understanding of adjustment in feeding ration needed to increase reproductive function and population of food fish species.

The sample preparation: Precipitation medium (PM; 80 µL) was added to 20 µL of the Tilapia sperm sample and the sample was placed in an ultrasonic bath for 5 minutes at room temperature. The sample was centrifuged at 7000 rpm, 5 min, 4 °C. The supernatant (25 µL) was added to a new tube for the Metamino derivatization. IS (10 µL) was added and the sample preparation protocol was continued with the addition of CTS and RDS according to the general protocol scheme [1].

The chromatographic conditions: LC-MS method according to the general protocol scheme [1].



AUTHORIZED DISTRIBUTOR

MZ-Analysentechnik GmbH, Barcelona-Allee 17 • D-55129 Mainz
Tel +49 6131 880 96-0, Fax +49 6131 880 96-20
e-mail: info@mz-at.de, www.mz-at.de

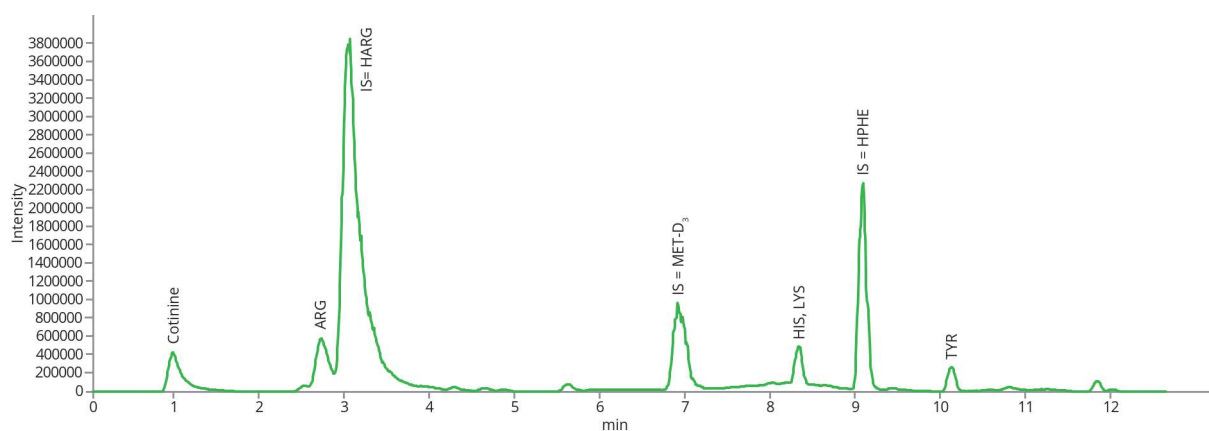
This application was developed by the Biology Centre CAS, České Budějovice, The Czech Republic.



Amino acids analysis in Tilapia sperm



Standard mixture – LC-MetAmino® kit; mass extracted chromatogram; 5 nmol SD1 and SD2 according to the manual [1].



Test mixture Tilapia sperm – LC-MetAmino® kit; mass extracted chromatogram; (25 µL of sample)

References:

[1] Chromservis: <https://www.chromservis.eu/en/metamino-kit-400139>