

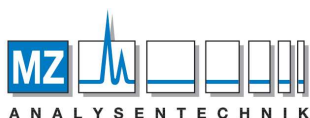


Amino acids analysis in human urine

Amino acids analysis in urine is excellent tool for identification of gastrointestinal and renal dysfunctions. It also may provide supportive information towards nutritional deficiencies of vitamins and minerals. MetAmino® kit provides a rapid, simple and precise method for the quantitative determination of wide panel of amino acids in urine. The test reflects recent diet and may be used to assess the impact of dietary changes.

The sample preparation: 10 µL of IS was added to 25 µL of unprecipitated fresh urine sample and the sample preparation protocol was continued with the addition of CTS and RDS according to the general protocol scheme [1].

The chromatographic conditions: LC-MS method according to the general protocol scheme [1].



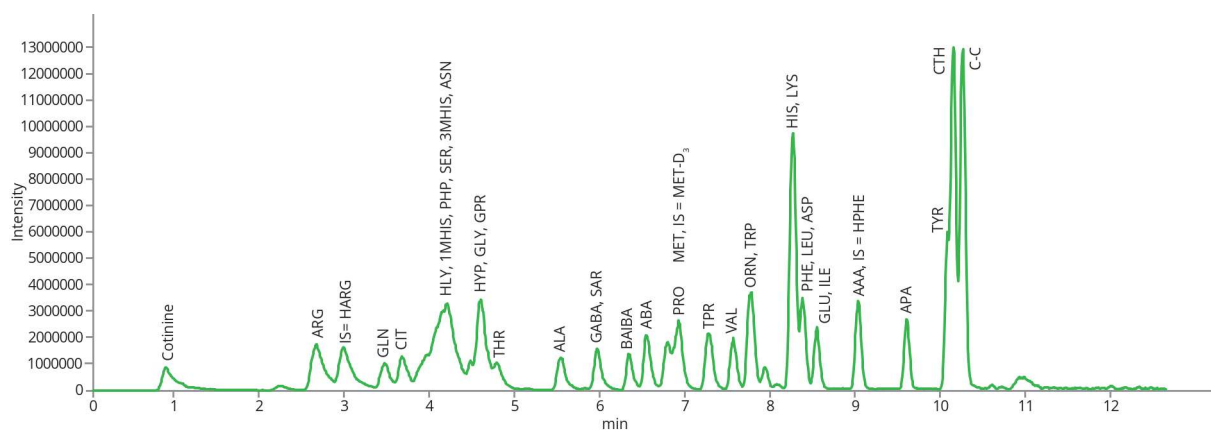
AUTHORIZED DISTRIBUTOR

MZ-Analysentechnik GmbH, Barcelona-Allee 17 • D-55129 Mainz
Tel +49 6131 880 96-0, Fax +49 6131 880 96-20
e-mail: info@mz-at.de, www.mz-at.de

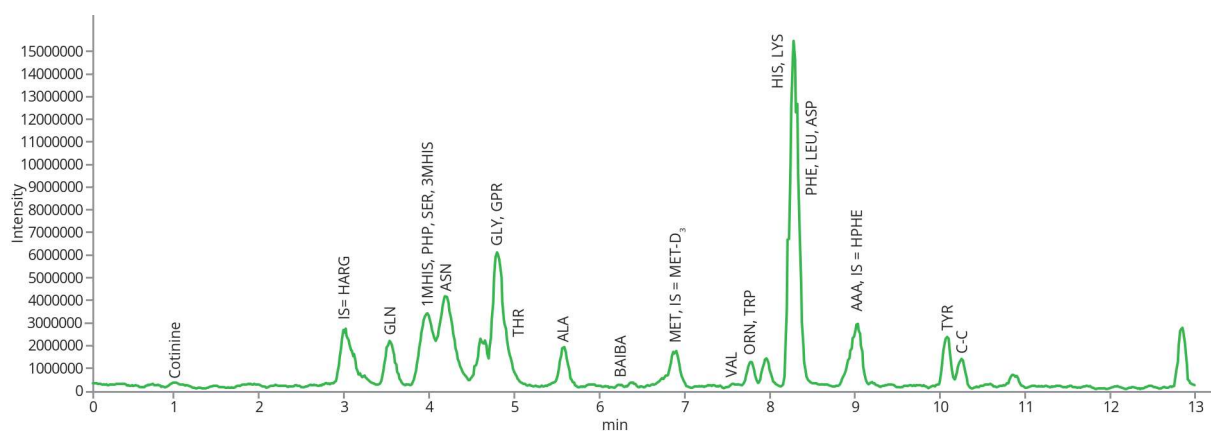
This application was developed by the Biology Centre CAS, České Budějovice, The Czech Republic.



Amino acids analysis in human urine



Standard mixture – LC MetAmino® kit; mass extracted chromatogram; 5 nmol SD1 and SD2 according to the manual [1]



Test mixture of human urine – LC-MetAmino® kit; mass extracted chromatogram; (25 µL of sample)

References:

[1] Chromservis: <https://www.chromservis.eu/en/metamino-kit-400139>