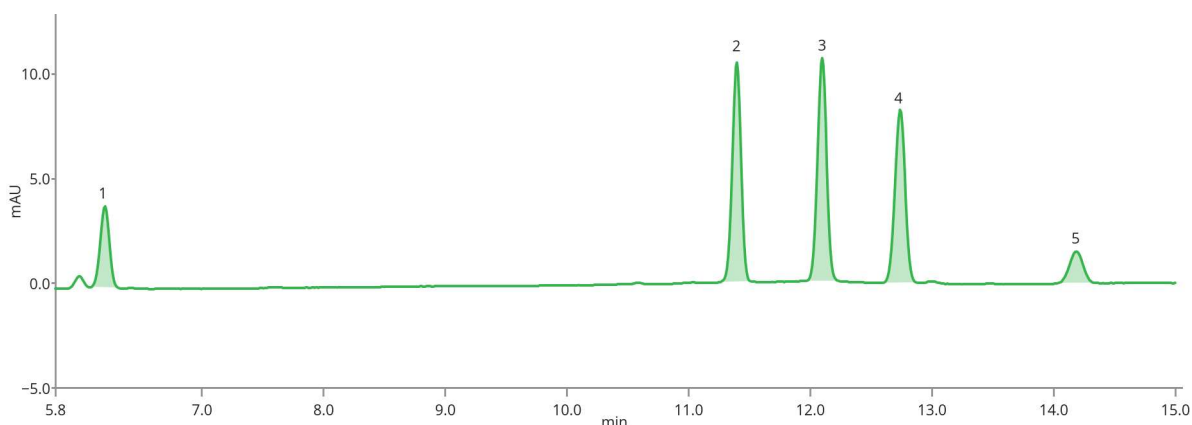


Vitamins A and E

Fat-soluble vitamins are monitored not only in patient's samples, but are also the subject of quality control in various food and dietary supplements.

Substance	Retinol (Vitamin A), CAS Number 68-26-8 <i>delta</i> -Tocopherol (E309), CAS Number 119-13-1 <i>gamma</i> -Tocopherol (E308), CAS Number 54-28-4 <i>alpha</i> -Tocopherol (E307), CAS Number 59-02-9 <i>alpha</i> -Tocopheryl acetate, CAS Number 58-95-7 (RRR- α -isomer)
------------------	---



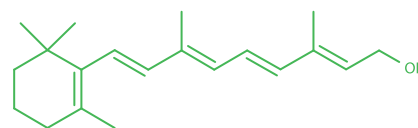
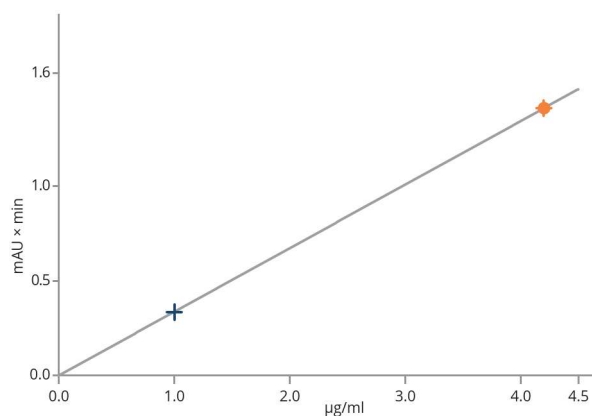
Standard on ARION® column

This application has been developed by WESSLING Hungary Kft.

Vitamins A and E

Column	ARION® Plus C18, 3 µm		
Dimensions	100 mm × 4.6 mm		
Part number	ARI-5720-II46		
Mobile phase	A: Water B: Methanol		
Gradient elution	Time	A (%)	B (%)
	0	15	85
	10	0	100
	18	0	100
Flow rate	1.0 mL/min		
Temperature	40 °C		
Injection volume	5.0 µL		
Detection	UV @284 nm		
Analytes	<ol style="list-style-type: none">1. Retinol (Vitamin A)2. Delta-tocopherol (D-Vitamin E)3. Gamma-tocopherol (Vitamin E γ)4. Alfa-tocopherol (Vitamin E α)5. Alpha-Tocopheryl acetate (Vitamin E acetate)		

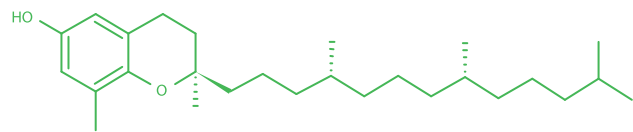
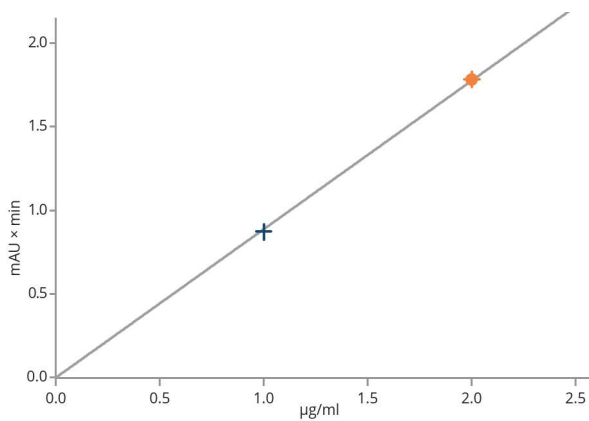
Calibration curves of analytes



Retinol (Vitamin A)

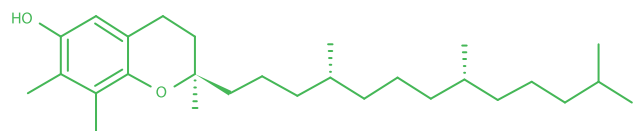
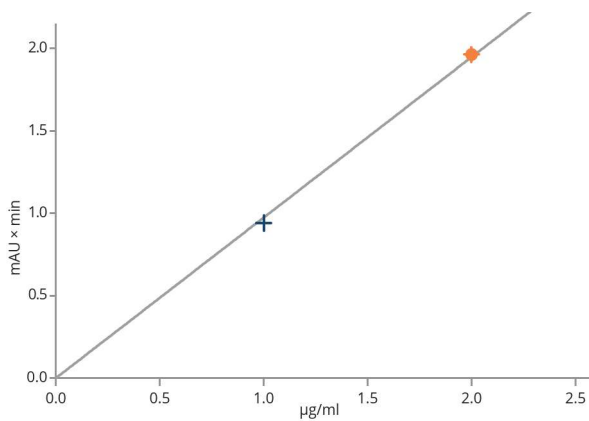
Retinol (Vitamin A)

Vitamins A and E



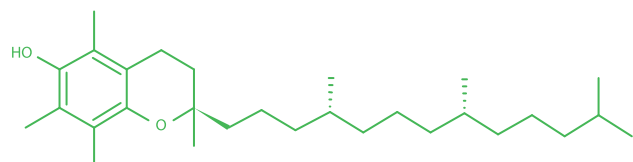
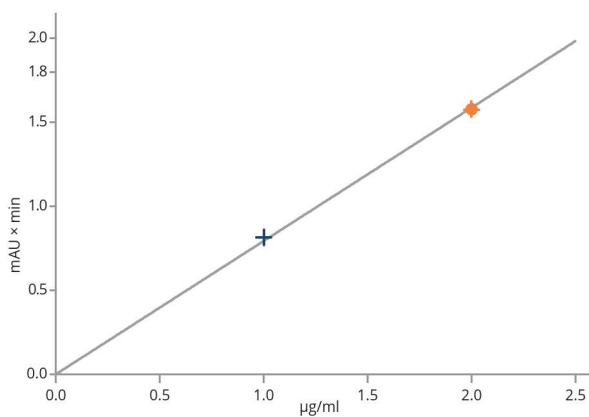
Delta-tocopherol (D-Vitamin E)

Delta-tocopherol (D-Vitamin E)



Gamma-tocopherol (Vitamin E γ)

Gamma-tocopherol (Vitamin E γ)



Alfa-tocopherol (Vitamin E α)

Alfa-tocopherol (Vitamin E α)