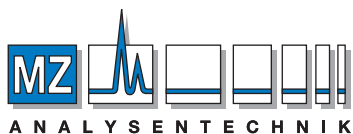


合成甘味料の分離

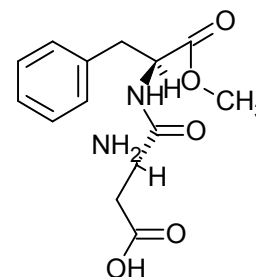
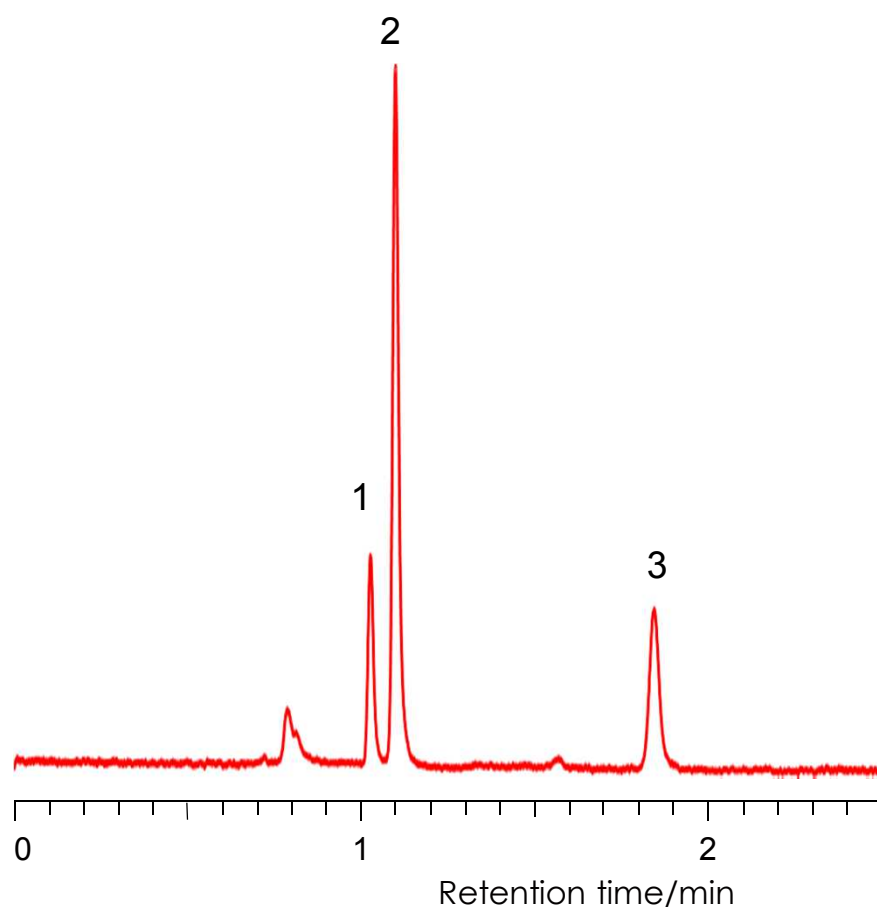
Artificial sweeteners

SunShell HILIC-Amide 2.6 μ m, 100 x 4.6 mm i.d.

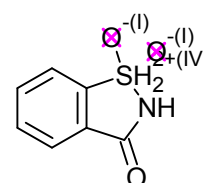


AUTHORIZED DISTRIBUTOR

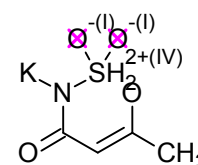
MZ-Analysentechnik GmbH, Barcelona-Allee 17 • D-55129 Mainz
Tel +49 6131 880 96-0, Fax +49 6131 880 96-20
e-mail: info@mz-at.de, www.mz-at.de



1. Aspartame



2. Saccharin



3. Acesulfame K

Column:

SunShell HILIC-Amide 2.6 μ m, 100 x 4.6 mm,
Mobile phase: acetonitrile: 25 mM phosphate buffer (pH2.5) =8:2
Flow rate: 1.0 mL/min ,
Temperature: Ambient
Detection: UV@215 nm
Sample: 1 = Aspartame, 2 = Saccharin, 3 = Acesulfame K