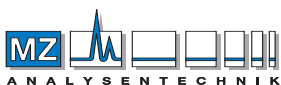


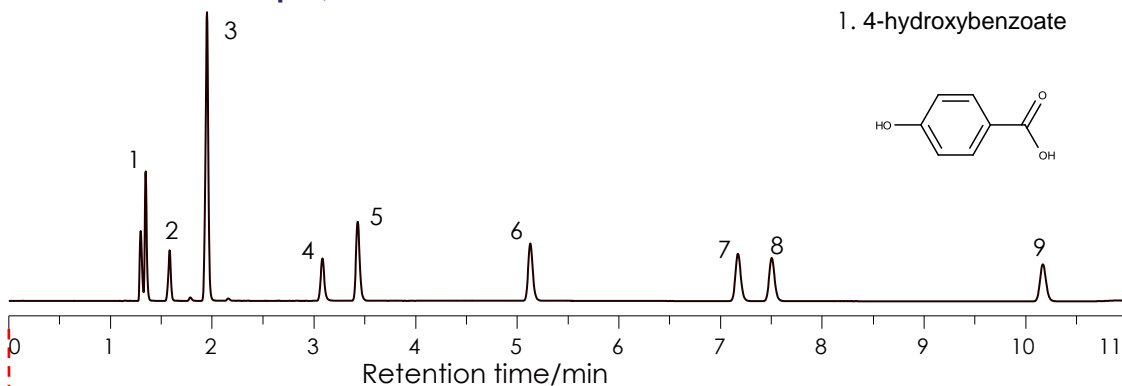
食品添加物の分離



AUTHORIZED DISTRIBUTOR
 MZ-Analysentechnik GmbH, Barcelona-Allee 17 • D-55129 Mainz
 Tel +49 6131 880 96-0, Fax +49 6131 880 96-20
 e-mail: info@mz-at.de, www.mz-at.de

Food additives

SunShell C18 2.6 µm, 150 x 4.6 mm i.d.

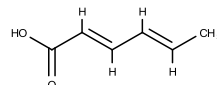
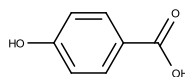


SunShell C18 2.6 µm, 150 x 4.6 mm i.d.

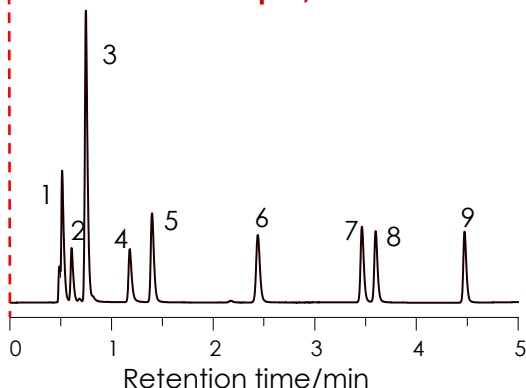
SunShell C18 2 µm, 100 x 2.1 mm i.d.

1. 4-hydroxybenzoate

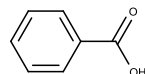
2. Sorbic acid



SunShell C18 2 µm, 100 x 2.1 mm i.d.

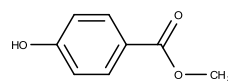
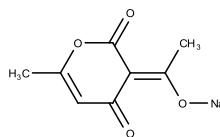


3. benzoic acid



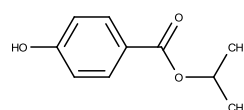
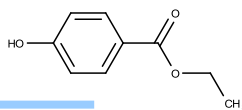
4. Dehydroacetic acid Na

5. methyl 4-hydroxybenzoate

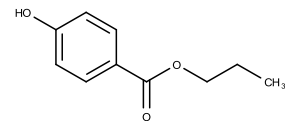


6. ethyl 4-hydroxybenzoate

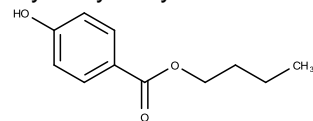
7. isopropyl 4-hydroxybenzoate



8. propyl 4-hydroxybenzoate



9. butyl 4-hydroxybenzoate



Mobile phase: A) 20 mM Ammonium formate pH4.9

B) Acetonitrile

Time (min)	0	10	12
%B (2.6 µm, 150 x 4.6 mm i.d.)	30	50	30

Time (min)	0	5	6
%B (2 µm, 100 x 2.1 mm i.d.)	30	80	30

Flow rate : 1.0 mL / min (2.6 µm, 150 x 4.6 mm i.d.)

: 0.4 mL / min (2 µm, 100 x 2.1 mm i.d.)

Temperature : 40 °C

Pressure : 21.0MPa (2.6 µm, 150 x 4.6 mm i.d.)

: 44.3MPa (2 µm, 100 x 2.1 mm i.d.)

Detection : UV@240 nm

SunShell C18カラムを使用する事で良好な分離を得られました。

圧力は上がってしまいますが、2µmカラムを使用する事で測定サイクルを1/2にする事が出来ます。また、流速も1/2以下になるため、使用する移動相は1/4以下になります。

Instrument	
Hitachi Chromaster®	
Detector:	5410
Oven:	5310
AutoSampler:	5260
Pump:	5160

