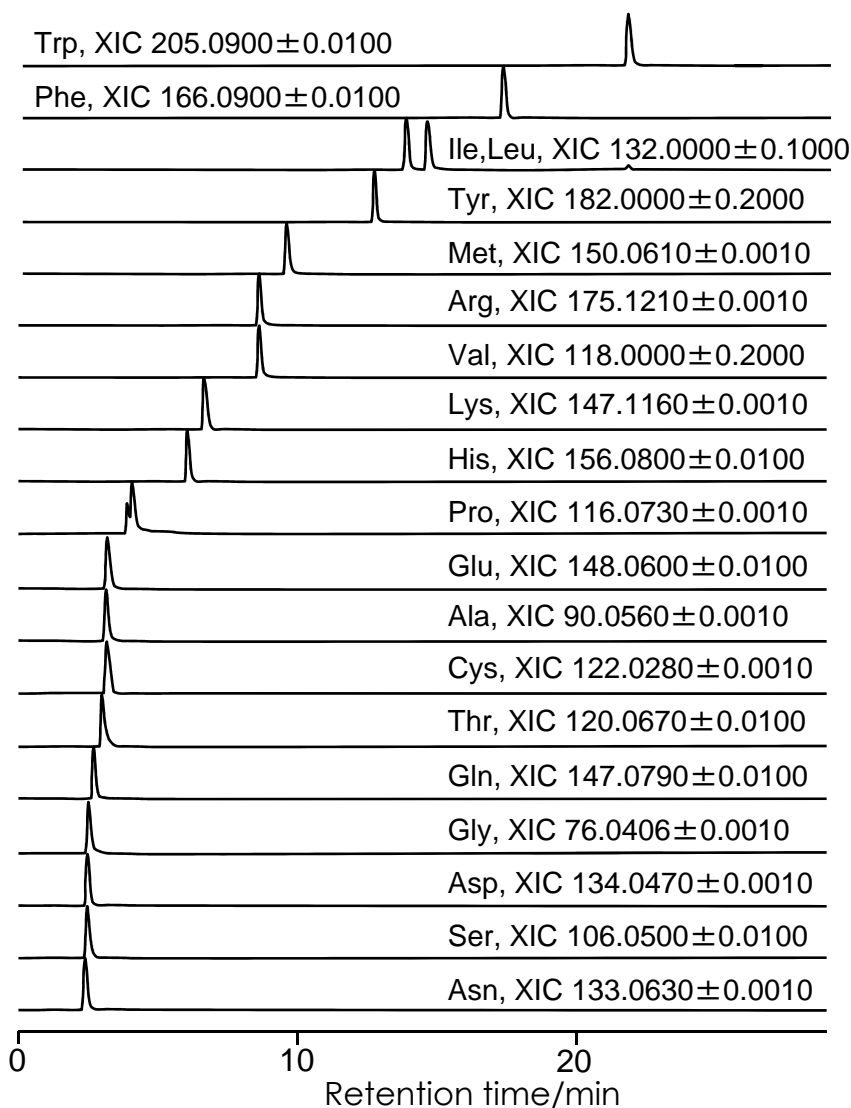


アミノ酸の分離 (LC/MS) (2)

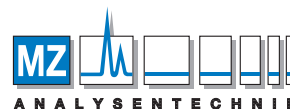
Amino acids LC/MS (2)

SunShell RP-AQUA 2.6 μ m, 150 x 2.1 mm i.d.



Column: SunShell RP-AQUA 2.6 μ m, 150 x 2.1 mm
Mobile phase: A) 5 mM HFBA, B) 5 mM HFBA in CH₃CN / H₂O (9/1)
%B 0% to 20% in 20 min
Flow rate: 0.2 mL / min
Temperature: 40 °C
Detection: MS (NanoFrontier LD)
ESI Positive, Extracted ion chromatogram (EIC)
HPLC: LaChrom Ultra

HFBA: Heptafluorobutyric acid



AUTHORIZED DISTRIBUTOR

MZ-Analysentechnik GmbH
Barcelona-Allee 17 • D-55129 Mainz
Tel +49 6131 880 96-0
Fax +49 6131 880 96-20
e-mail: info@mz-at.de
www.mz-at.de

データ提供: 横浜国立大学 金子竹男先生
横浜国立大学機器分析評価センター

Mass spectra of Ile and Leu

