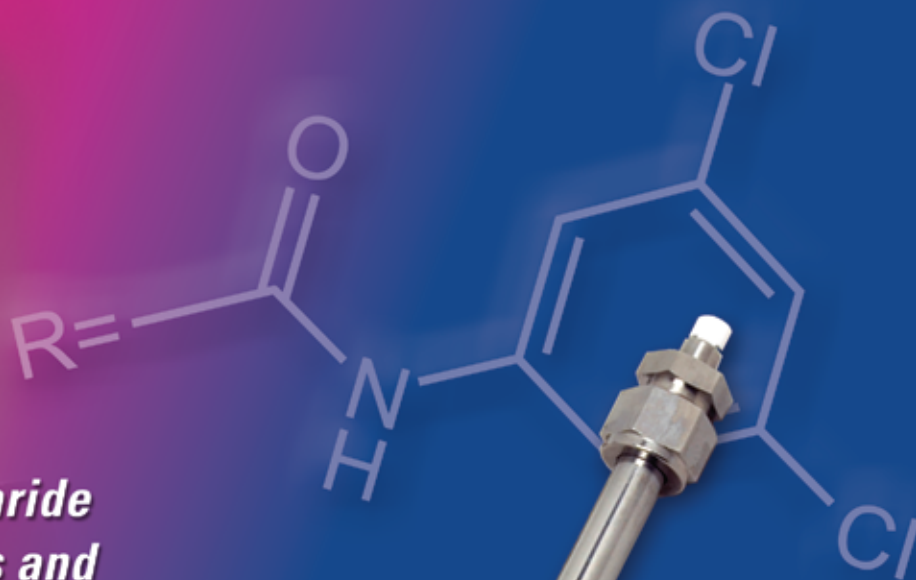




CHIRAL
TECHNOLOGIES INC
DAICEL GROUP

CHIRALPAK® IE™

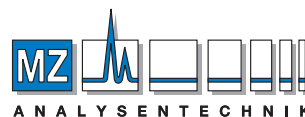
*Immobilized Polysaccharide
chiral stationary phases and
columns — The R^2 Advantage*



- R^2**
- **Reliability** – authentic Daicel CSPs and columns
 - **Robustness** – outstanding durability and extended lifetime
 - **Reproducibility** – easy method validation

Plus:

- Unique enantiorecognition
- Solvent flexibility



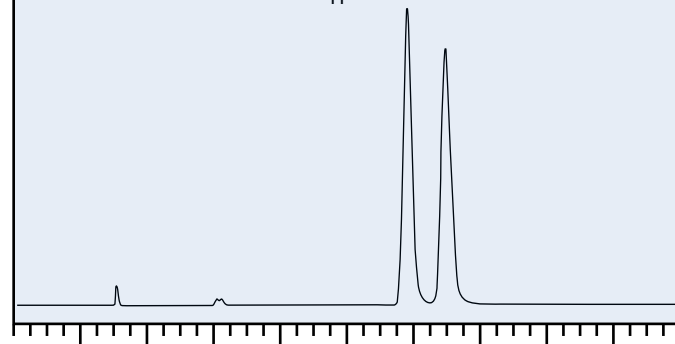
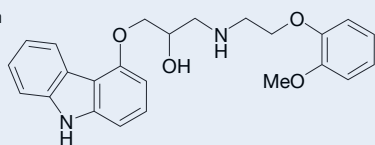
AUTHORIZED DISTRIBUTOR

MZ-Analysentechnik GmbH
Barcelona-Allee 17 • D-55129 Mainz
Tel +49 6131 880 96-0
Fax +49 6131 880 96-20
e-mail: info@mz-at.de
www.mz-at.de

CHIRALPAK® IE™

Carvedilol

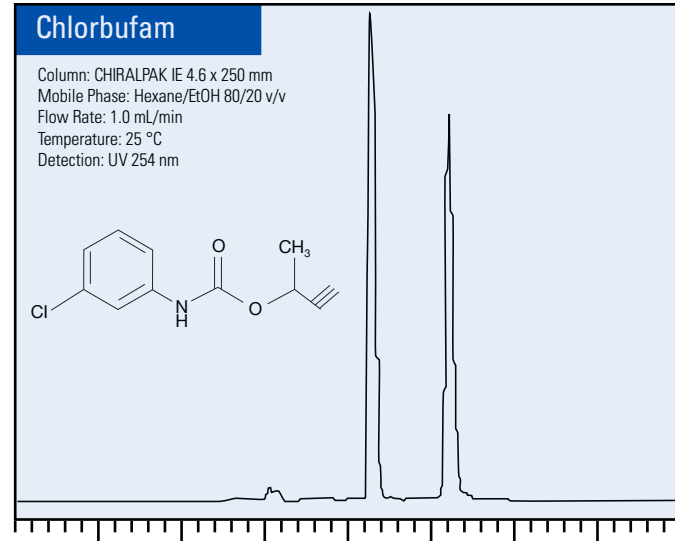
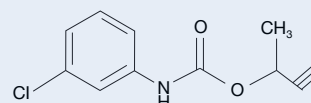
Column: CHIRALPAK IE 4.6 x 250 mm
 Mobile Phase: Hexane/EtOH/DEA
 80/20/0.1 v/v/v
 Flow Rate: 1.0 mL/min
 Temperature: 25 °C
 Detection: UV 254 nm



Minutes

Chlorbufam

Column: CHIRALPAK IE 4.6 x 250 mm
 Mobile Phase: Hexane/EtOH 80/20 v/v
 Flow Rate: 1.0 mL/min
 Temperature: 25 °C
 Detection: UV 254 nm

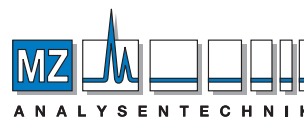


Minutes

For more information about all of our proprietary columns and CSPs, call 1-800-6CHIRAL, or visit us online at www.chiraltech.com.

| PART NO. | PRODUCT NAME | PARTICLE SIZE (µm) | ID (mm) | LENGTH (mm) | PRODUCT TYPE |
|----------|--------------|--------------------|---------|-------------|--------------------|
| 85020 | CHIRALPAK IE | 20 | 1 kg | | CSP |
| 85225 | CHIRALPAK IE | 20 | 4.6 | 250 | Method Development |
| 85233 | CHIRALPAK IE | 20 | 10 | 100 | SMB (set of 8) |
| 85235 | CHIRALPAK IE | 20 | 10 | 250 | Semi-Prep |
| 85242 | CHIRALPAK IE | 20 | 21 | 50 | Semi-Prep Guard |
| 85245 | CHIRALPAK IE | 20 | 21 | 250 | Semi-Prep |
| 85255 | CHIRALPAK IE | 20 | 50 | 250 | Semi-Prep |
| 85256 | CHIRALPAK IE | 20 | 50 | 500 | Preparative |
| 85266 | CHIRALPAK IE | 20 | 100 | 500 | Preparative |
| 85275 | CHIRALPAK IE | 20 | 30 | 250 | Semi-Prep |
| 85935 | CHIRALPAK IE | 20 | 10 | 250 | SFC Semi-Prep |
| 85945 | CHIRALPAK IE | 20 | 21 | 250 | SFC Semi-Prep |
| 85955 | CHIRALPAK IE | 20 | 50 | 250 | SFC Semi-Prep |
| 85975 | CHIRALPAK IE | 20 | 30 | 250 | SFC Semi-Prep |
| 85311 | CHIRALPAK IE | 5 | 4.0 | 10 | Guard Cartridges |
| 85324 | CHIRALPAK IE | 5 | 4.6 | 150 | Analytical |
| 85325 | CHIRALPAK IE | 5 | 4.6 | 250 | Analytical |
| 85335 | CHIRALPAK IE | 5 | 10 | 250 | Semi-Prep |
| 85337 | CHIRALPAK IE | 5 | 10 | 20 | Semi-Prep Guard |

| PART NO. | PRODUCT NAME | PARTICLE SIZE (µm) | ID (mm) | LENGTH (mm) | PRODUCT TYPE |
|----------|----------------|--------------------|---------|-------------|-----------------------|
| 85345 | CHIRALPAK IE | 5 | 20 | 250 | Semi-Prep |
| 85375 | CHIRALPAK IE | 5 | 30 | 250 | Semi-Prep |
| 85394 | CHIRALPAK IE | 5 | 2.1 | 150 | Analytical |
| 85422 | CHIRALPAK IE | 5 | 4.6 | 50 | SFC Guard |
| 85423 | CHIRALPAK IE | 5 | 4.6 | 100 | SFC Screening Columns |
| 85435 | CHIRALPAK IE | 5 | 10 | 250 | SFC Semi-Prep |
| 85445 | CHIRALPAK IE | 5 | 21 | 250 | SFC Semi-Prep |
| 85455 | CHIRALPAK IE | 5 | 50 | 250 | SFC Preparative |
| 85475 | CHIRALPAK IE | 5 | 30 | 250 | SFC Semi-Prep |
| 85511 | CHIRALPAK IE-3 | 3 | 4.0 | 10 | Guard Cartridges |
| 85522 | CHIRALPAK IE-3 | 3 | 4.6 | 50 | Analytical |
| 85523 | CHIRALPAK IE-3 | 3 | 4.6 | 100 | Analytical |
| 85524 | CHIRALPAK IE-3 | 3 | 4.6 | 150 | Analytical |
| 85525 | CHIRALPAK IE-3 | 3 | 4.6 | 250 | Analytical |
| 85592 | CHIRALPAK IE-3 | 3 | 2.1 | 50 | Analytical |
| 85593 | CHIRALPAK IE-3 | 3 | 2.1 | 100 | Analytical |
| 85594 | CHIRALPAK IE-3 | 3 | 2.1 | 150 | Analytical |
| 85595 | CHIRALPAK IE-3 | 3 | 2.1 | 250 | Analytical |



MZ-Analysentechnik GmbH
 Barcelona-Allee 17 • D-55129 Mainz
 Tel +49 6131 880 96-0
 Fax +49 6131 880 96-20
 e-mail: info@mz-at.de
www.mz-at.de

AUTHORIZED DISTRIBUTOR