



Empore™ EZ-Trace Workstation

- Four Channel Manual Solid Phase Extraction System

Empore EZ-Trace

Empore EZ-Trace Solid Phase Extraction (SPE) extraction workstation is designed to improve the efficiency of the traditional disk and cartridge SPE workflow by allowing users to perform up to 4 extractions simultaneously. This manual, vacuum-controlled extraction workstation offers a high quality, cost-effect alternative to other high-priced, automated options.

The Empore EZ-Trace workstation is universally compatible with all Empore 47 / 90mm disks and cartridges. The unique independent channel design ensures that each extraction is precisely controlled, preventing cross-contamination with the other channels. High-throughput Flow path switches provide a unique, environmentally friendly extraction by collecting organic and aqueous wastes in separate reservoirs.

Product Features:

- Universal Compatibility
- User Friendly Layout
- Independent Channel Design
- Precise Flow Rate Control
- High Sample Flow Rate
- High-throughput Flow Path Switches
- Solvent Soaking Capability
- Inert Sample Pathways
- Separate Organic and Aqueous Waste Collection



- 1 Designed to have 4 independently operated extraction channels.
- 2 Adapters are compatible with Empore 47/90mm disks and cartridges.
- 3 Elution and waste collection switching valve.
- 4 Organic and aqueous waste collection switching valve.
- 5 Needle valves for precision flow control.
- 6 Separate reservoirs for organic and aqueous waste collection.
- 7 Vacuum pump controlled extraction (sold separately).

Technical Specifications:

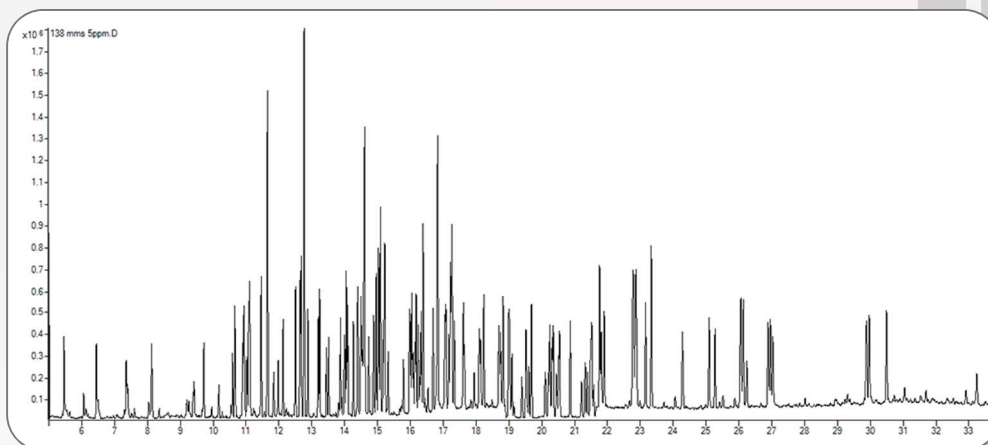
Compatibility	Empore 47/90mm disks and cartridges and other vendors' disks and cartridges
Number of Extraction Channels	4
Dimensions (L×W×H; mm)	520×290×440
Weight (kg)	12
SKU	98-0604-0801-7
Empore Catalog #	8000
Optional Accessories	Aqueous waste tank (PN 98-0604-0803-3) Vacuum pump (PN 98-0604-0802-5)

Applications:

Any Empore disk or cartridge application. Perfect for large environmental samples.

Below is an example application that:

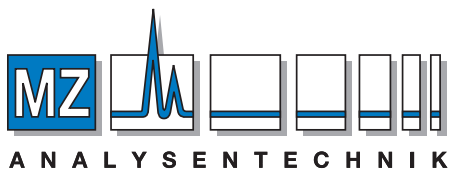
Uses the Empore EZ-Trace for the extraction of SVOCs using the Empore SDB-XC disk by EPA Method 525.3.



Chromatogram of the separation of 125 analytical calibration standards, 3 surrogate, and 4 IS compounds (132 total).

Recovery of EPA Method 525.3 standard compounds

	Reagent Water			Ground Water
	0.2	2.0	5.0	2.0
$\mu\text{g L}^{-1}$	0.2	2.0	5.0	2.0
$\geq 70\%$ Recovery	118	123	123	123
avg. Rec. (%RSD)	89.9 (7.4)	90.9 (5.8)	94.4 (3.4)	93.4 (4.5)



AUTHORIZED DISTRIBUTOR

MZ-Analysentechnik GmbH, Barcelona-Allee 17 • D-55129 Mainz

Tel +49 6131 880 96-0, Fax +49 6131 880 96-20

e-mail: info@mz-at.de, www.mz-at.de



CDS Analytical Headquarters:

465 Limestone Road P.O. Box 277 Oxford, PA 19363-0277 Tel: 800.541.6593 610.932.3636 www.cdsanalytical.com