



Flow Cytometry

Cell Sorting	34
Instruments	34
Consumables	38
Flow Cytometry Reagents	41
Antibody Labeling Kits	41
Cell Viability Assays	42
Cell Proliferation Assays	44

Cell Sorting

Cell sorting provides a method to sort or isolate a homogenous population of cells from a heterogeneous mixture of cells based on intracellular and/or extracellular properties, typically using fluorescence. Expressed fluorescent proteins, such as green fluorescent protein (GFP), or fluorophores conjugated to antibodies bind to markers of interest, which allows for a starting population to be sorted to greater than 99% purity. While cell sorting is commonly used in fields such as immunology, cancer biology, and stem cell biology, it is quickly becoming a useful tool in broader research studies from microbiology to neuroscience. Cell sorting can also be used as an upstream tool for proteomic or genomic experiments to achieve more specific results by reducing background noise or false positives.

Instruments

See Also

S3e Biosafety System Class I: page 37.

Cell sorting consumables: page 38.

Flow cytometry reagents: page 41.

Cell counting: page 30.

S3e™ Cell Sorter

The S3e cell sorter is the first truly walk-away automated cell sorter available to scientists. The S3e is a compact cell sorter equipped with one or two lasers and up to four fluorescence detectors plus forward and side scatter detection. The cell sorter utilizes established jet-in-air technology in which cells are analyzed directly within the stream before being sorted. Samples can be sorted at high speeds while sensitivity and purity are maintained.

Expertly engineered ProDrop™ technology automates the drop delay calculation and droplet break-off monitoring, thereby simplifying one of the most complex and error-prone aspects of cell sorting. The drop delay is calculated through direct counting of bead events, ensuring extraordinarily high accuracy and precision.

The S3e features the AutoGimbal™ system, a highly sophisticated system combining five picomotor controllers, imaging, and software algorithms to enable a hands-free automated process for nozzle tip and stream to optics alignment. The AutoGimbal system provides the added confidence and reproducibility in the sort setup to achieve the best sort results day to day.

The S3e cell sorter is an easy-to-use benchtop sorter for both flow cores and cell biology laboratories. Affordable without compromising performance, this full-featured cell sorter provides researchers access to cell sorting without the need for a dedicated operator.

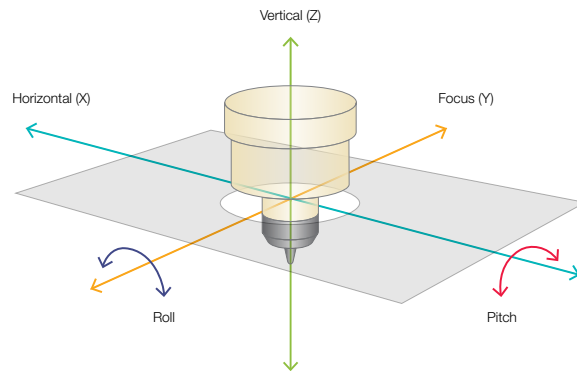


Features include:

- **Simplified instrument setup** — automated drop delay calculation and droplet break-off monitoring enable precise 1–4 color sorting with minimal training
- **Hands-free nozzle tip alignment** — features AutoGimbal system for fully automatic and walk-away setup
- **Compact design** — only 70 x 65 x 65 cm (2.3 x 2.1 x 2.1 ft) in dimension, it includes an onboard fluidics and temperature control system
- **High speed and high purity** — sorts cells fast while maintaining high sensitivity and purity
- **2-way cell sorting** — sorts samples into 2 different defined populations at the same time
- **Intuitive interface** — features user-friendly ProSort™ software for effortless instrument control and sort logic definition

Core capabilities of the AutoGimbal system are:

- High-resolution automated alignment driven by software
- Software controlled using image processing and algorithms
- Precise positioning of the nozzle and stream trajectory are fine-tuned with 5-axis piezo-driven submicron motion control
- 3 axes (x, y, and z) for optimal positioning of the nozzle stream at the intersection of the lasers and detectors
- 2 axes (roll and pitch) for adjusting the stream trajectory necessary for accurate drop delay determination and stream alignment
- Reproducible and reliable mechanism with full nozzle accessibility



For More Information
 Web: bio-rad.com/cellsorter
 Request or download bulletins: 6614 and #10032007

S3e Cell Sorter System

Features

Performance	Droplet frequency	37–43 kHz
	Sorting type	True jet-in-air for high-performance sorting
	Sorting rate	No hardware limitations for sort rate, limited only by droplet frequency and application
	Sorting purity	>99% pure
	Sensitivity	<125 MESF for FITC and PE
	Temperature control	Sample and collection temperature control from 4–37°C using Peltier solid-state system
Lasers/Optics	One-laser system	Primary: 488 nm 100 mW
	Two-laser system	Primary: 488 nm 100 mW Secondary: 561 nm 100 mW or 640 nm 100 mW
	Detectors	Forward scatter (FSC) with photomultiplier tube (PMT) Side scatter (SSC) with PMT 2 fluorescence detectors with PMT (one laser) 4 fluorescence detectors with PMT (two lasers)
	Filters (488 laser)	Long pass: 495DLP, 560DLP, 540LP Band pass: 488/6, 525/30
	Filters (488/561 lasers)	Long pass: 495DLP, 560DLP, 593DLP, 655LP Band pass: 488/6, 525/30, 615/25, 586/25
	Filters (488/640 lasers)	Long pass: 495DLP, 560DLP, 640DLP, 700LP Band pass: 488/6, 526/48, 593/40, 670/30, 700LP
Fluidics	Nozzle	100 µm fixed
	Pressure	30 psi fixed
	Sheath	Onboard dilution of 8x sheath fluid or direct use of 1x sheath fluid
	Minimum sample loading	200 µl
Sorting	Directions	Two way
	Mode	Single, purity, enrichment
	Collection	Up to 5 x 5 ml sample tubes each direction Up to 5 x 1.5 ml tubes each direction Microscope slides 8-well strip each direction
	Physical Specifications	Dimensions (W x D x H)
Weight		90 kg (instrument only)

See Also

ProLine rainbow beads: page 38.
 ProFlow sort grade 8x sheath fluid: page 39.
 S3e fluidic container: page 40.

Ordering Information

Catalog #	Description
-----------	-------------

S3e Cell Sorter

1451005	S3e Cell Sorter (488 nm) , 488 nm 100 mW laser, includes 2 fluorescence detectors with filters, AutoGimbal system, ProSort software
1451006	S3e Cell Sorter (488/561 nm) , 488 nm and 561 nm 100 mW lasers, includes 4 fluorescence detectors with filters, AutoGimbal system, ProSort software
1451008	S3e Cell Sorter (488/640 nm) , 488 nm and 640 nm 100 mW lasers, includes 4 fluorescence detectors with filters, AutoGimbal system, ProSort software
1451078	S3e Biosafety System Class I
1451029	S3e Cell Sorter (488 nm) with S3e Biosafety System Class I
1451030	S3e Cell Sorter (488/561 nm) with S3e Biosafety System Class I
1451032	S3e Cell Sorter (488/640 nm) with S3e Biosafety System Class I

Accessories

1441001	S3e Sheath Cap Assembly , white
1441002	S3e DI Water Cap Assembly , blue
1441003	S3e Waste Cap Assembly , red
1441005	S3e Filter Block A , empty with 2 dichroic filter holders
1441006	S3e Filter Block B , empty with 2 dichroic filter holders
1441007	S3e Individual Filter Holder , black, empty
1441008	Neutral Density Filter , optical density 1.0
1441009	S3e Nozzle Tip , 100 µm
1441010	S3e Nozzle O-Ring with Alignment Disk , pkg of 2
1441011	S3e Collection Adaptor Set
1441012	Hex Driver , 2 mm
1441013	S3e Individual Dichroic Filter Holder , empty
1451076	S3e Power Conditioner , international
1451077	S3e Power Conditioner , U.S.
1451065	S3e Cell Sorter Accessory Kit , includes 100 µm nozzle tip, 2 nozzle O-rings, 2 nozzle alignment disks, 1 ml syringe, 2 neutral density filters (1.0), 2 mm hex driver, spanner wrench
1451086	ProLine Universal Calibration Beads , includes 3 x 5 ml bottles of ready-to-use beads for alignment verification and drop delay determination on the S3e cell sorter
1451082	ProFlow Sort Grade 8x Sheath Fluid , includes 5 x 4 L ready-to-use, sterile, preservative-free phosphate buffered saline (PBS) solutions in gamma-irradiated S3e fluidic containers
1451083	ProFlow Sort Grade Water , includes 5 x 4 L sterile, endotoxin-free water in gamma-irradiated S3e fluidic containers
1451084	S3e Fluidic Container , 3 x 4 L gamma-irradiated sterile containers for use on the S3 or S3e cell sorter
1451085	ProLine Rainbow Beads , includes a 5 ml bottle containing a mixture of beads dyed with 8 different fluorescence intensities for excitation at wavelengths between 365–650 nm

S3e™ Biosafety System Class I

The S3e Biosafety System Class I is an aerosol containment hood custom designed for the S3 or S3e cell sorter, which provides users and the environment protection from aerosols created during the cell sorting process. It is an affordable alternative to traditional large and expensive biosafety hoods commonly offered for cell sorters.

The S3e Biosafety System Class I sits directly on the benchtop and contains the compact S3 or S3e™ cell sorter. Its easy-to-open, magnetically attached vinyl walls provide ready access to all sides of the cell sorter during operation, cleaning and maintenance, or service.

Fully integrated with and monitored by the S3 or S3e cell sorter's ProSort™ software, users have real-time information about HEPA filter life and the temperature of the system inside. Fan speed is determined based on the cell sorter operation mode — sorting or idle. The HEPA filter provides protection at 99.997% for 0.3 µm particles. The system is able to perform a 100% air exchange six to eight times per minute around the S3 or S3e cell sorter.

The system adheres to the biosafety requirements of the International Society for Advancement of Cytometry (ISAC) for aerosol containment.



Product features include:

- **Compact and affordable** — small footprint for an economical alternative to large and expensive traditional biosafety hoods
- **Software controlled** — full integration with ProSort software for fan speed regulation and temperature monitoring in real time
- **Fully accessible** — easily opened vinyl walls are magnetically attached, allowing access to all 4 sides of the cell sorter for cleaning and maintenance
- **Quiet and energy efficient** — generates low vibration and sound pressure levels; specialized fans and low backpressure from the HEPA filter reduce energy consumption

For More Information

Web: bio-rad.com/S3eBiosafetyMore

Request or download bulletins: 6404 and 6503

Ordering Information

Catalog #	Description
1451005	S3e Cell Sorter (488 nm) , 488 nm 100 mW laser, includes 2 fluorescence detectors with filters, 2 fluidic containers with connectors, software
1451006	S3e Cell Sorter (488/561 nm) , 488 nm and 561 nm 100 mW lasers, includes 4 fluorescence detectors with filters, 2 fluidic containers with connectors, software
1451008	S3e Cell Sorter (488/640 nm) , 488 nm and 640 nm 100 mW lasers, includes 4 fluorescence detectors with filters, AutoGimbal system, ProSort software
1451078	S3e Biosafety System Class I
1451029	S3e Cell Sorter (488 nm) with S3e Biosafety System Class I
1451030	S3e Cell Sorter (488/561 nm) with S3e Biosafety System Class I
1451032	S3e Cell Sorter (488/640 nm) with S3e Biosafety System Class I
1451076	S3e Power Conditioner , international
1451077	S3e Power Conditioner , U.S.

Consumables

ProLine™ Universal Calibration Beads

ProLine universal calibration beads are designed to verify the alignment performance and determine the drop delay on any S3™ or S3e™ cell sorter with a 488, 488/561, or 488/640 nm laser configuration. Each bottle contains a single population of ready-to-use fluorescent beads for a total of 30 quality control (QC) tests.

Product features include:

- Ready-to-use fluorescent beads do not require dilution
- Alignment and drop delay can be performed with 1 reagent in less than 7 min
- Pass/fail performance result with ProSort™ software
- Trending QC information in ProSort software for tracking the performance of your S3 or S3e cell sorter



For More Information

Web: bio-rad.com/prolineuniversal

Request or download bulletins: 6614 and #10041517

See Also

ProFlow sort grade
8x sheath fluid:
page 39.

ProFlow sort
grade water:
page 40.

S3e fluidic container:
page 40.

ProLine™ Rainbow Beads

ProLine rainbow beads are designed for instrument performance monitoring on the S3 or S3e cell sorter. Each bottle contains 3.0–3.4 μm beads with eight different fluorescence intensities. Beads can be excited with wavelengths between 365–650 nm.

- Easily check the sensitivity and linearity of your S3 or S3e cell sorter with 1 set of beads
- Track fluorescence fluctuations with bead lots validated on the S3 or S3e cell sorter to ensure accurate baselines
- Use on other flow cytometry and cell sorter instruments



For More Information

Web: bio-rad.com/s3emore

Request or download bulletin: 6614

Ordering Information

Catalog #	Description
1451085	ProLine Rainbow Beads , includes a 5 ml bottle containing a mixture of beads dyed with 8 different fluorescence intensities for excitation at wavelengths between 365–650 nm
1451086	ProLine Universal Calibration Beads , 15 ml (3 x 5 ml)

ProFlow™ Sort Grade 8x Sheath Fluid

ProFlow sort grade 8x sheath fluid is a ready-to-use, sterile, endotoxin- and preservative-free phosphate buffered saline solution. Each lot is tested for cytotoxicity and particulates and is bottled in gamma-irradiated containers to ensure sterility. Up to 5 weeks of run time is available per case when it is used on the S3™ or S3e™ cell sorter. The S3 or S3e cell sorter employs its internal fluidics system to automatically dilute ProFlow sort grade 8x sheath fluid and creates 32 L of 1x sheath solution from each container, generating 160 L per case.

Product features include:

- **No manual dilution required** — the S3 and S3e cell sorters' unique internal fluidics chamber automatically generates a 1x solution, ensuring accurate dilution and minimizing potential contamination
- **Easy container swapping** — prepackaged, sterile S3e fluidic container bypasses the need to fill a new container during a sort, minimizing the risk of contamination
- **Minimum storage requirements** — one 20 L case creates 160 L of 1x sheath solution, freeing your storage space for other purposes

For More Information

Web: bio-rad.com/sheath

Request or download bulletins: 6614 and #10030825



See Also

ProLine universal calibration beads: page 38.

ProLine rainbow beads: page 38.

ProFlow sort grade water: page 40.

S3e fluidic container: page 40.

Ordering Information

Catalog #	Description
1451082	ProFlow Sort Grade 8x Sheath Fluid, 20 L (5 x 4 L)

See Also

ProLine universal calibration beads: page 38.

ProLine rainbow beads: page 38.

ProFlow sort grade 8x sheath fluid: page 39.

ProFlow™ Sort Grade Water

ProFlow sort grade water is a sterile, endotoxin-free solution designed to give the best sort results when combined with ProFlow sort grade 8x sheath fluid on the S3™ or S3e™ cell sorter system. Each lot is prepared by reverse osmosis, passed through fine carbon, deionized through two resin beds, serially filtered twice through 0.1 µm positively charged membranes, and dispensed into gamma-irradiated S3e fluidic containers.



For More Information

Web: bio-rad.com/s3emore

Request or download bulletin: 6614

Ordering Information

Catalog #	Description
1451083	ProFlow Sort Grade Water , includes 5 x 4 L sterile, endotoxin-free water in gamma-irradiated S3e fluidic containers

S3e™ Fluidic Container

S3e fluidic containers are specifically designed for use on the S3 or S3e cell sorter. Easily store your solutions in the S3e fluidic containers for quick container swaps during a run. Each 4 L container is gamma irradiated to ensure sterility.



For More Information

Web: bio-rad.com/s3emore

Request or download bulletin: 6614

Ordering Information

Catalog #	Description
1451084	S3e Fluidic Container , 3 x 4 L gamma-irradiated sterile containers for use on the S3 or S3e cell sorter

Flow Cytometry Reagents

Antibody Labeling Kits

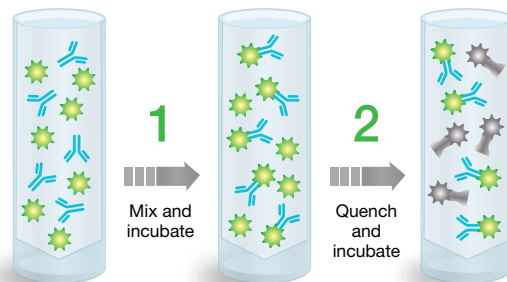
Antibody Labeling Kits

ReadiLink antibody labeling kits offer easy fluorescence conjugation in microscale volumes. Each kit provides all the essential components to perform two 50 µg conjugation reactions with monoclonal/polyclonal antibodies. Available across a wide range of excitation and emission wavelength combinations, the ReadiLink kits can be used to easily conjugate any antibody of interest for use in multicolor flow cytometry experiments.

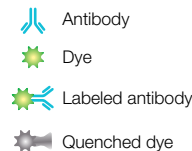
- Efficiently labels microscale volumes of antibodies in 2 easy steps
- Forms a stable carboxamide bond with proprietary fluorescent dye
- Eliminates background fluorescence interference from free labeling dye with proprietary quench buffer

For More Information

Web: bio-rad.com/readilink1



Quickly label your antibody of interest in two easy steps with ReadiLink antibody labeling kits.



See Also

Cell sorting consumables: page 38.
Cell counting: page 30.

Ordering Information

Catalog #	Description
1351001	ReadiLink 350/440 Antibody Labeling Kit , includes 2 vials of labeling dye, reaction buffer, and dye quench buffer for labeling 2 x 50 µg of antibodies
1351002	ReadiLink 492/516 Antibody Labeling Kit , includes 2 vials of labeling dye, reaction buffer, and dye quench buffer for labeling 2 x 50 µg of antibodies
1351003	ReadiLink 555/570 Antibody Labeling Kit , includes 2 vials of labeling dye, reaction buffer, and dye quench buffer for labeling 2 x 50 µg of antibodies
1351004	ReadiLink 594/610 Antibody Labeling Kit , includes 2 vials of labeling dye, reaction buffer, and dye quench buffer for labeling 2 x 50 µg of antibodies
1351005	ReadiLink 633/655 Antibody Labeling Kit , includes 2 vials of labeling dye, reaction buffer, and dye quench buffer for labeling 2 x 50 µg of antibodies
1351006	ReadiLink 647/674 Antibody Labeling Kit , includes 2 vials of labeling dye, reaction buffer, and dye quench buffer for labeling 2 x 50 µg of antibodies
1351007	ReadiLink 680/701 Antibody Labeling Kit , includes 2 vials of labeling dye, reaction buffer, and dye quench buffer for labeling 2 x 50 µg of antibodies
1351008	ReadiLink 700/713 Antibody Labeling Kit , includes 2 vials of labeling dye, reaction buffer, and dye quench buffer for labeling 2 x 50 µg of antibodies
1351009	ReadiLink 750/780 Antibody Labeling Kit , includes 2 vials of labeling dye, reaction buffer, and dye quench buffer for labeling 2 x 50 µg of antibodies
1351010	ReadiLink 790/811 Antibody Labeling Kit , includes 2 vials of labeling dye, reaction buffer, and dye quench buffer for labeling 2 x 50 µg of antibodies
1351011	ReadiLink 405/454 Antibody Labeling Kit , includes 2 vials of labeling dye, reaction buffer, and dye quench buffer for labeling 2 x 50 µg of antibodies
1351012	ReadiLink 405/508 Antibody Labeling Kit , includes 2 vials of labeling dye, reaction buffer, and dye quench buffer for labeling 2 x 50 µg of antibodies
1351013	ReadiLink 405/537 Antibody Labeling Kit , includes 2 vials of labeling dye, reaction buffer, and dye quench buffer for labeling 2 x 50 µg of antibodies

Cell Viability Assays

VivaFix™ Cell Viability Assay

Bio-Rad's VivaFix cell viability assays provide a sensitive method for determining the viability of mammalian cells by flow cytometry, cell sorting, and microscopy.

Taking advantage of an array of proprietary amine reactive dyes, VivaFix cell viability assays enable researchers to distinguish between live and dead cells, providing at least a 100-fold difference in fluorescence intensity between the two populations. The brightness of VivaFix dyes is preserved upon treatment with fixative agents and can be used with biohazardous samples to track cell viability after fixation.



Product features include:

- Optimal discrimination between dead and live cell populations
- Compatible with cell fixation
- 8 different excitation/emission wavelength combinations to fit most multicolor experiments

For More Information

Web: bio-rad.com/vivafix

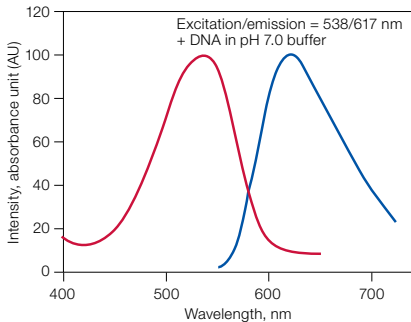
Request or download bulletins: 6559 and #10041645

Ordering Information

Catalog #	Description
1351111	VivaFix 353/442 Cell Viability Assay , pkg of 1, kit includes 4 x 50 test vials and 250 µl of DMSO, for running 200 assays
1351112	VivaFix 410/450 Cell Viability Assay , pkg of 1, kit includes 4 x 50 test vials and 250 µl of DMSO, for running 200 assays
1351113	VivaFix 408/512 Cell Viability Assay , pkg of 1, kit includes 4 x 50 test vials and 250 µl of DMSO, for running 200 assays
1351114	VivaFix 398/550 Cell Viability Assay , pkg of 1, kit includes 4 x 50 test vials and 250 µl of DMSO, for running 200 assays
1351115	VivaFix 498/521 Cell Viability Assay , pkg of 1, kit includes 4 x 50 test vials and 250 µl of DMSO, for running 200 assays
1351116	VivaFix 547/573 Cell Viability Assay , pkg of 1, kit includes 4 x 50 test vials and 250 µl of DMSO, for running 200 assays
1351117	VivaFix 583/603 Cell Viability Assay , pkg of 1, kit includes 4 x 50 test vials and 250 µl of DMSO, for running 200 assays
1351118	VivaFix 649/660 Cell Viability Assay , pkg of 1, kit includes 4 x 50 test vials and 250 µl of DMSO, for running 200 assays

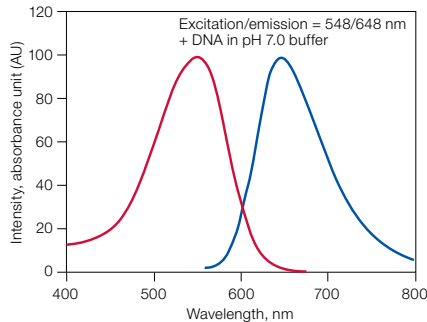
ReadiDrop™ Cell Viability Assays

Designed for ease of use in cell sorting and flow cytometry applications, ReadiDrop™ cell viability assays remove the traditional manual weighing, pipetting, and dilution steps required with commonly available cell viability dyes. Simply add one or two drops to assess the health of your cells.



ReadiDrop Propidium Iodide

- Cell impermeant nucleic acid-binding dye that enhances fluorescence 20- to 30-fold after binding to double-stranded DNA/RNA
- Ready-to-use formulation in PBS without preservatives
- Stable at room temperature
- Maximum excitation: 535 nm
- Maximum emission: 617 nm



ReadiDrop 7-AAD

- Cell impermeant DNA binding dye with a high affinity for GC-rich regions of double-stranded DNA
- Ready-to-use formulation in PBS without preservatives
- Stable at room temperature
- Maximum excitation: 546 nm
- Maximum emission: 647 nm

For More Information
Web: bio-rad.com/readidrop1

Ordering Information

Catalog #	Description
1351101	ReadiDrop Propidium Iodide , includes 3 x 3 ml bottles of ready-to-use ultra-pure grade propidium iodide suspended in PBS for dead cell exclusion in cell sorting and flow cytometry applications
1351102	ReadiDrop 7-AAD , includes 3 x 3 ml bottles of ready-to-use 7-aminoactinomycin D (7-AAD) suspended in PBS for dead cell exclusion in cell sorting and flow cytometry applications

Cell Proliferation Assays

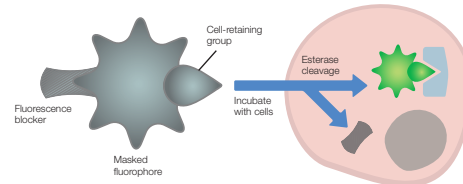
CytoTrack™ Cell Proliferation Assay

CytoTrack cell proliferation assays are designed to efficiently stain live cells for excellent resolution of each generation in a population of dividing cells. Using a proprietary chemistry, the CytoTrack dye reacts with intracellular proteins and is effectively retained in the cell without efflux, allowing resolution of up to ten cell divisions. As cell division occurs, the dye is successively halved and the different generations can be determined based on the decrease in fluorescence intensity.

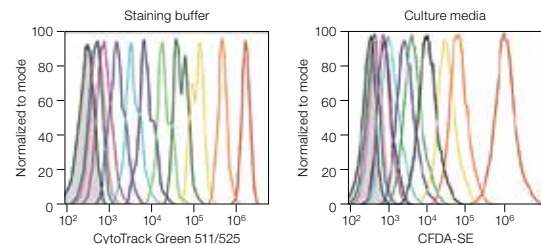
- Save time by using the dyes directly in your cell culture media
- Fix and permeabilize your cells for intracellular analysis using standard formaldehyde-containing fixatives and saponin-based permeabilization buffers
- Easily combine CytoTrack dyes with fluorescent proteins or antibody-labeled fluorophores for multicolor cell analysis

For More Information

Web: bio-rad.com/cytotrack



Consisting of three components, CytoTrack dyes efficiently label live cells for visualizing up to ten cell divisions.



Resolve up to ten cell divisions in staining buffer or culture media.

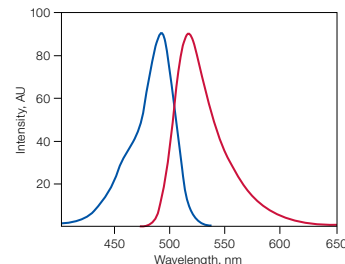
Ordering Information

Catalog #	Description
1351202	CytoTrack Blue 403/454 , pkg of 1, kit includes 4 vials blue dye and 1 vial DMSO for 200 cell proliferation tests
1351203	CytoTrack Green 511/525 , pkg of 1, kit includes 4 vials green dye and 1 vial DMSO for 200 cell proliferation tests
1351204	CytoTrack Yellow 542/556 , pkg of 1, kit includes 4 vials yellow dye and 1 vial DMSO for 200 cell proliferation tests
1351205	CytoTrack Red 628/660 , pkg of 1, kit includes 4 vials red dye and 1 vial DMSO for 200 cell proliferation tests

CFDA-SE Cell Proliferation Assay

CFDA-SE cell proliferation assay provides carboxyfluorescein diacetate succinimidyl ester (CFDA-SE) in a convenient and easy-to-use format. CFDA-SE is a cell-permeable dye that fluoresces after the acetate groups are cleaved by intracellular esterases, creating carboxyfluorescein succinimidyl ester (CFSE). As the succinimidyl ester group reacts with primary amines of intracellular proteins, CFSE is retained in the cell and is successively halved during cell divisions.

- Visualize up to 8 cell divisions
- Minimize contamination and reduce dilution steps with smaller vial size



CFDA-SE excitation/emission is 492/517 nm in 0.1 M NaOH. Excitation wavelength (—); emission wavelength (—). AU, absorbance unit.

For More Information

Web: bio-rad.com/cytotrack1

Ordering Information

Catalog #	Description
1351201	CFDA-SE Cell Proliferation Assay , includes 5 x 100 µg vials 5(6)-carboxyfluorescein diacetate succinimidyl ester, CFDA-SE

Subject Index

Antibody Labeling Kits, 41
CFDA-SE Cell Proliferation Assay, 44
CytoTrack™ Cell Proliferation Assay, 44
ProFlow™ Sort Grade 8x Sheath Fluid, 39
ProFlow™ Sort Grade Water, 40
ProLine™ Rainbow Beads, 38
ProLine™ Universal Calibration Beads, 38
ReadiDrop™ Cell Viability Assays, 43
S3e™ Cell Sorter, 34
S3e™ Biosafety System Class I, 37
S3e™ Fluidic Container, 40
VivaFix™ Cell Viability Assay, 42

