



Bio-Plex® Multiplex System

Bio-Plex® Multiplex System	298
Instruments, Software, and Tools	298
Bio-Plex® Assays	305
Bio-Plex Pro™ Human MMP and TIMP Assays	305
Bio-Plex Pro RBM Human Metabolic and Hormone Panels	306
Bio-Plex Pro Human Inflammation Assays	307
Bio-Plex Pro Cytokine, Chemokine, and Growth Factor Assays	309
Bio-Plex Pro Cell Signaling Assays	315
Bio-Plex Pro RBM Apoptosis Assays	317
Bio-Plex Pro RBM Kidney Toxicity Assays	318
Bio-Plex Pro Human Cancer Biomarker Panels	319
Bio-Plex Pro Diabetes Assays	321
Bio-Plex Pro Human Isotyping Assays	323
Bio-Plex Pro Human Acute Phase Assay Panel	324
Bio-Plex COOH Beads and Related Reagents	325



Bio-Plex® Multiplex System

The Bio-Plex multiplex platform is built on the most flexible technology available. Bio-Rad offers instruments to satisfy a variety of research needs and budgets for multiplex applications. These readers include the versatile Bio-Plex 200 system and the high-throughput capacity Bio-Plex 3D suspension array system.

 [Learn More about the Technology](#)
 Web: bio-rad.com/tech/bio-plex

Instruments, Software, and Tools

Bio-Plex System Selection Guide

	Bio-Plex 200	Bio-Plex 3D
		
Features	Versatile — accommodates multiple users Flexible — can read both magnetic and nonmagnetic assays One acquisition and analysis software package User-friendly data management	Meets high-throughput needs Optimal for labs with fewer budget restrictions Offers robotics interfacing
Read time (1 x 96-well plate)	~45 min	~20 min
Plate compatibilities	96-well	96- and 384-well
Number of measurable analytes/well	100	500
Assay compatibility	All magnetic and nonmagnetic (polystyrene) bead-based assays	Most magnetic and all nonmagnetic (polystyrene) bead-based assays
Acquisition software	Bio-Plex Manager	xPONENT
Analysis software	Bio-Plex Manager and Bio-Plex Data Pro	Bio-Plex Manager and Bio-Plex Data Pro
Robotics and LIMS/LIS compatible	—	Yes*
On-site training	Included	Included
Footprint (W x D x H)	16.9 x 20.1 x 9.1" (43 x 51 x 23 cm)	23 x 25.7 x 18" (58.4 x 65.3 x 45.7 cm)

* Included in xPONENT automation module.

Bio-Plex® 200 System

The Bio-Plex 200 system integrates xMAP suspension array technology with a reliable instrument, dedicated software, and validation tools. The system includes:

- **Array reader** — distinguish up to 100 different color-coded bead sets, each representing a different assay. Results in up to 9,600 data points in 45 min from a familiar 96-well format
- **Optional high-throughput fluidics (HTF)** — delivers up to 20 L of sheath fluid (40 plates) without user intervention
- **Bio-Plex MCV plate IV** — customized for hands-free startup, shutdown, and performance testing
- **Bio-Plex Manager™ software** — controls the instrument, data acquisition, and analysis (Standard and Security Editions)

Time-saving features include:

- Simplified startup, shutdown, control, and pre- and post-run maintenance routines
- Sophisticated analysis and instrument control software
- Automated IQ/OQ



- Integrated system validation and calibration logs for a record of system performance
- Superior curve fitting, statistics reporting, and charting features
- Calibration capabilities for both broad and low range standard dilutions

For More Information

Web: bio-rad.com/bio-plex200

Request or download bulletin: 6006

Ordering Information

Catalog #	Description
171000201	Bio-Plex 200 System , 100–240 V, includes array reader, microplate platform, Bio-Plex Manager software with workstation license, PC, monitor, calibration kit, validation kit 4.0, MCV plate IV, Bio-Plex reservoir, 20 L sheath fluid, spare sample needle
171000205	Bio-Plex 200 System with HTF , same as #171000201 with high-throughput fluidics (HTF)

Bio-Plex 200 Accessories and Replacement Parts

171203050	Bio-Plex Reservoir
171000055	Sheath Fluid , 1x, 20 L
171002002	Communication Cable , 3' CAN BUS cable, connects the array reader with the HTF system
171002003	Communication Cable , 5' USB cable, connects the array reader with a PC USB port
171002010	Sheath Fluid Bottle , 1 L
171002012	Sheath Waste Bottle , 1 L
171002020	Sample Needle , 4.6" (11.6 cm)
171002024	Alignment Guide , aligns the array reader on the microplate platform
171002026	Needle Adjustment Wrench
171002030	Protective Shield for Sample Needle
171002032	Air Intake Filter
171002033	Syringe Seal
171002034	Syringe Seal with Cylinder
171002038	Sheath Fluid Filter with Quick Connect Tubing , removes particles >5 µm in diameter
171002040	Sheath Cube Filter , pkg of 1, air tubing HTF to reader, sheath tubing HTF to reader, tubing sheath container to HTF (including 10 µm filter), and waste tubing (reader to waste container)
171002056	HTF Tubing , pkg of 1, air tubing HTF to reader, sheath tubing HTF to reader, tubing sheath container to HTF (including 10 µm filter), waste tubing (reader to waste container)
171002023	Needle Guide , allows sample needle access to microplates

Bio-Plex 200 System Performance Validation and Calibration Tools

171203001	Bio-Plex Validation Kit 4.0 , includes optics validation, reporter validation, classify validation, and fluidics validation bead sets for approximately 50 validation routines using Bio-Plex Manager software, current version (Standard or Security Edition), and MCV plate IV
171203033	Bio-Plex MCV Plate IV , for use with Bio-Plex Manager software, current version (Standard or Security Edition), and validation kit 4.0
171203060	Bio-Plex Calibration Kit , includes Cal1 and Cal2 calibration beads for approximately 50 daily calibration routines

Bio-Plex® 3D Multiplex System

The Bio-Plex 3D multiplex system is the next-generation multiplexing platform based on xMAP technology. Expanded multiplexing capability, faster time to results, and automation capability make it the platform of choice for high-throughput testing for nucleic acid and protein applications.

Features include:

- Rapid read times — twice as fast as with the Bio-Plex 200 system
- Measurement of up to 500 unique analytes in a single sample
- 96- and 384-well plate capability
- Laboratory information system (LIMS/LIS)-compatible software
- Automation-compatible tray design and software
- Robotics interfacing capabilities
- Compatibility with magnetic or nonmagnetic assays
- Bio-Plex Manager™ software for data analysis
- On-site training

For More Information

Web: bio-rad.com/bio-plex3D

Request or download bulletins: 5967 and 5980



Bio-Plex 3D Suspension Array System with Bio-Plex Manager Software

System Throughput Capabilities

Test (50 µl well volume, 2,500 beads/well)	Read Time*	Tests/Hr
96-well (100-plex)	18 min	32,000
384-well (100-plex)	1 hr 15 min	30,700
96-well (500-plex)	45 min	64,000
384-well (500-plex)	2 hr 15 min	85,000

* Read times measured across four instruments. Actual results may vary.

Ordering Information

Catalog #	Description
BioPlex3D	Bio-Plex 3D Multiplex System , includes Bio-Plex 3D multiplex system, xPONENT acquisition software, PC, calibration and verification reagents, Bio-Plex Manager desktop license
892018500001*	xPONENT 21 CFR Part 11 Software Module , enables U.S. FDA 21 CFR Part 11 compliance
892018700001*	xPONENT Automation Module , enables interfacing with robotics workstations
171022001*	Swivel Base , allows rotation of the instrument away from the robotics workstation for maintenance and sample loading
892018600001*	xPONENT LIS Software Module , enables interfacing with LIMS/LIS databases
892018200001*	xPONENT Extra Seat Licenses , 3 additional seats of xPONENT software
FM3D-CAL-K25	Bio-Plex 3D Calibration Kit , good for 25 uses; includes reagents, CD, 25 stripwells
FM3D-PVER-K25	Bio-Plex 3D Performance Verification Kit , good for 25 uses; kit includes reagents, fluidics, CD, 25 stripwells

* All additional accessories may be purchased through Bio-Rad Laboratories, Inc. at the time of system purchase. Post-system purchase accessories must be purchased directly from Luminex Corporation.

Bio-Plex[®] MAGPIX[™] Multiplex Reader Accessories and Software

Ordering Information

Catalog # Description

Kits and Reagents

171213003	Bio-Plex MAGPIX Drive Fluid , 4 x 700 ml drive fluid for use with Bio-Plex MAGPIX multiplex reader
171213001	Bio-Plex MAGPIX Calibration Kit , calibration kit good for 25 uses; kit includes 5 ml calibrator, microspheres, CD, pkg of 25 8-well strips
171213002	Bio-Plex MAGPIX Verification Kit , verification kit good for 25 uses; kit includes MAGPIX verifier, 5 ml of microspheres, MAGPIX fluidics 1, MAGPIX fluidics 2, MAGPIX performance verification kit CD, pkg of 25 8-well strips

Bio-Plex MAGPIX Software

171051555	Bio-Plex Manager MP Software Upgrade , includes Bio-Plex Manager MP software, getting started guide, probe height adjustment plate, upgrade quick guide, and Bio-Plex Manager 6.1
-----------	--

Bio-Plex MAGPIX Accessories

171012004	Bio-Plex MAGPIX Replacement Waste Fluid Container , pkg of 1, 850 ml container, holds waste fluid, for use with Bio-Plex MAGPIX reader
171012005	Bio-Plex MAGPIX Sample Probe , sample probe needle for use with Bio-Plex MAGPIX multiplex reader
171012006	Bio-Plex MAGPIX Sample Probe Height Adjustment Kit , sample probe height adjustment kit for use with Bio-Plex MAGPIX multiplex reader
171012008	Bio-Plex MAGPIX 96-Well Plate Heater Block , 96-well plate heater block for use with Bio-Plex MAGPIX multiplex reader
30034376	Bio-Plex Pro Wash Station , for magnetic bead-based assays, includes magnetic plate carrier, waste bottle, 2 liquid bottles
171020100	Bio-Plex Handheld Magnetic Washer , includes magnetic washer and adjustment hex tools for use in manual wash steps for all Bio-Plex magnetic assays
171061000	Bio-Plex Probe Height Adjustment Plate , replacement plate for Bio-Plex MAGPIX multiplex reader

Bio-Plex Pro[™] Washing Accessories

Automated Bio-Plex Pro Wash Station

The Bio-Plex Pro wash station streamlines multiplex assays by eliminating manual wash steps. Bio-Plex Pro wash stations help decrease variability and increase consistency in results between experiments and are specifically designed to perform Bio-Plex assay wash steps. Benefits include:

- Reliable and reproducible results
- Optimized onboard protocols
- Simple ELISA-like workflow

The Bio-Plex Pro wash station incorporates a magnetic plate carrier for simple and reliable hands-free washing of 96-well plates.

Wash stations include preset wash programs that have been optimized for Bio-Plex assays.

Bio-Plex Handheld Magnetic Washer

The Bio-Plex handheld magnetic washer is used in manual wash steps for all Bio-Plex magnetic assays.



Ordering Information

Catalog #	Description
30034376	Bio-Plex Pro Wash Station , includes magnetic plate carrier, waste bottle, 2 buffer bottles for use with magnetic beads
171020100	Bio-Plex Handheld Magnetic Washer , includes magnetic washer and adjustment hex tools for washing all Bio-Plex magnetic assays

Accessories

171025001	Bio-Plex Pro Flat Bottom Plates , 40 x 96-well plates, for washing magnetic beads using the Bio-Plex Pro or Bio-Plex Pro II wash stations
171304500	Bio-Plex Wash Buffer , 1.5 L
171304502	Filter Plate , 1 x 96-well filter plate with clear plastic lid, plate holder tray, for washing nonmagnetic beads using the Bio-Plex Pro II wash station, optional vacuum manifold; sealing tape not included

Bio-Plex Manager™ Software, Standard Edition

Bio-Plex Manager software is a comprehensive, all-in-one software package that provides advanced data analysis for multiplex assays.

Simple Operation

- Ability to self train — just follow the steps outlined on the screen
- Familiar Windows interface — no new terms or menus to learn

Save Time

- Simplified input — values for standards are easy to enter; automatic addition of new lots reduces setup time
- Automated data processing — proprietary algorithm automatically sets the appropriate dynamic range and identifies data points outside this range
- Immediate recalculation of results efficiently updates data when settings are changed

Use Tools That Meet Your Unique Needs

- Superior sensitivity and dynamic range with onboard Brendan Scientific StatLIA 4PL and 5PL weighted curve-fitting models
- Data normalization using multiple internal controls (housekeeping genes) for gene expression applications
- Gene Manager analysis module for presence and absence analysis, pathogen detection, and genotyping applications

Analyze Data with Easy-to-Use Reports

- Automated export of standard curve graphs
- View of all wells or summary (average) of replicate samples
- Data organized by sample type, group, or well
- One-click navigation between analytes
- Flexible data presentation

Data Export, Cross-Platform Capabilities, and System Compatibility

- Import and analyze data from xPONENT and other third-party software
- Use any commercial or custom xMAP assay built on any Luminex microsphere
- Copy and paste data into popular word processing and presentation software applications
- Export to text, XML, and Excel in column or 96-well format
- Analyze data in LIMS and other third-party software by customizing export options
- Request Bio-Plex Manager 4.1.1 software for installation on Luminex systems with IS 2.3 software

Bio-Plex Manager Software Licenses

License	Capabilities and Uses
Instrument control	Full-system, data acquisition and analysis; included with all Bio-Plex 200 systems
Desktop	Single-user license for protocol setup and data analysis; does not control the array reader
Network	Multiuser (5, 10, 25, or 50) licenses for data access from a server; does not control the array reader
Security Edition	Enables U.S. FDA 21 CFR Part 11 compliance

System Requirements

CPU	Pentium 4 or higher, PC only
Operating system	Windows XP Professional, Windows 7

For More Information

Web: bio-rad.com/bio-plexmanager
Request or download bulletin: 5613

Ordering Information

Catalog #	Description
171STND01	Bio-Plex Manager Software , 1-user desktop license, to analyze Bio-Plex data and generate protocols, does not operate the instrument
171STND05	Bio-Plex Manager Software , 5-user desktop license to analyze Bio-Plex data and generate protocols, does not operate the instrument
171STND10	Bio-Plex Manager Software , 10-user desktop license to analyze Bio-Plex data and generate protocols, does not operate the instrument
171STND25	Bio-Plex Manager Software , 25-user desktop license to analyze Bio-Plex data and generate protocols, does not operate the instrument

Contact Bio-Rad Technical Support to verify whether your current system is compatible with these software products.

Bio-Plex Manager™ Software Conversions and Upgrades

Bio-Plex Manager software conversions and upgrades allow you to upgrade previous versions of Bio-Plex Manager or convert non Bio-Plex® systems to run like a Bio-Plex 200 system.

- **Preprogrammed routine processes** — automate startup, calibration, validation, run, and shutdown
- **Unattended routine operations** — program pre- and post-run maintenance operations to save time

Ordering Information

Catalog #	Description
171STND23	Bio-Plex Manager Software for IS 2.3 System , system license, most current version, for converting Luminex IS and xPONENT systems
171SUPG30	Bio-Plex Manager Software for 3.0 Instrument Control Software , system license for upgrading standard or security software version 3.0 to current Bio-Plex Manager version (Security Edition upgrade requires #171SCRT00)
171SUPG40	Bio-Plex Manager Software for 4.0 Instrument Control Software , system license for upgrading the standard or security software version 4.0 to current Bio-Plex Manager version (Security Edition upgrade requires #171SCRT00)
171SUPG41	Bio-Plex Manager Software for 4.1 Instrument Control Software , system license for upgrading the standard or security software version 4.1 to current Bio-Plex Manager version (Security Edition upgrade requires #171SCRT00)
171SUPG50	Bio-Plex Manager Software for 5.0 Instrument Control Software , system license for upgrading the standard or security software version 5.0 to current Bio-Plex Manager version (Security Edition upgrade requires #171SCRT00)

Bio-Plex Manager™ Software, Security Edition

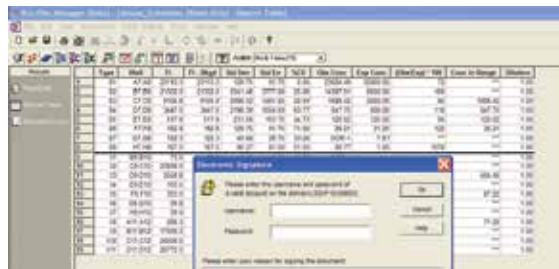
Includes all Standard Edition software features and has built-in security features for U.S. FDA 21 CFR Part 11 compliance:

- Control user log-in with different user levels for access to different functions
- Audit trails
- Secure protocol and data files
- Secure databases for reporting of calibration, validation, and instrument operations

For More Information

Web: bio-rad.com/bio-plexmanager

Request or download bulletin: 5613



Electronic signature window allows you to bring documents into a secure environment.

Ordering Information

Catalog #	Description
-----------	-------------

- | | |
|-----------|--|
| 171SCRT00 | Bio-Plex Manager Instrument Control License , Security Edition, upgrades workstation with Bio-Plex Manager software, allows compliance with U.S. FDA 21 CFR Part 11 regulations |
| 171SCRT01 | Bio-Plex Manager Software , Security Edition desktop, includes 1-user desktop license, allows compliance with U.S. FDA 21 CFR Part 11 regulations. Does not operate the instrument. |
| 171SCRT05 | Bio-Plex Manager Software , Security Edition desktop, includes 5-user network license, allows compliance with U.S. FDA 21 CFR Part 11 regulations. Does not operate the instrument. |

Contact Bio-Rad Technical Support to verify whether your current system is compatible with these software products.

Bio-Plex Data Pro™ Software

Bio-Plex Data Pro software simplifies the management and analysis of large datasets generated from multiplex assays. The software allows up to ten data file imports per project; optional Bio-Plex Data Pro Plus software is available for projects with more than ten data file imports.

Organize Data

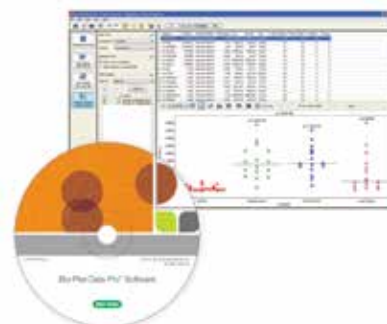
- Merge, import, sort, and filter data from multiple datasets

Automate Calculations

- Perform common calculations and statistical tests quickly and confidently

Visualize Results

- Present data clearly with customized graphs and tables



For More Information and to Download a Free Trial
Web: bio-rad.com/datapro

Ordering Information

Catalog #	Description
-----------	-------------

- | | |
|-----------|--|
| 171001523 | Bio-Plex Data Pro Plus Software , includes 5 Bio-Plex Data Pro Plus software licenses |
| 171001513 | Bio-Plex Data Pro Software , includes 5 Bio-Plex Data Pro software licenses |

Bio-Plex® Assays

Bio-Plex Pro™ Human MMP and TIMP Assays

The Bio-Plex Pro assays for human matrix metalloproteinases (MMPs) and tissue inhibitors of matrix metalloproteinases (TIMPs) consist of panels of 9 MMPs and 4 TIMPs.

MMPs degrade extracellular matrix proteins, whereas TIMPs work to inhibit the activity of MMPs. Studying MMPs and TIMPs together can reveal disruptions in the balance of activity between these two protein families, providing insights into complex disease states.

These immunoassays are built on magnetic beads to enable robust quantification of multiple proteins in human samples for research involving the following conditions and disease pathways:

Associated Research	Associated Pathways
Cancer	Inflammation
Cardiovascular disease	Metastasis
Infectious disease	Apoptosis
Autoimmune disease	Angiogenesis
Neurology	Tumor invasion
	Wound healing

Product features include:

- Single dilution factor protocol, measure 9 MMPs with less work
- Magnetic beads for simplified plate processing
- Flexible ordering options — order either premixed all-in-one kits or singleplex sets, or customize your assay with the Bio-Plex assay builder (bio-rad.com/assaybuilder)
- Single-level quality controls with lot-specific ranges
- Assay quick guide to get you started right away
- High-quality design for robust and reproducible measurements

For More Information

Web: bio-rad.com/bio-plexmmpsandtimp
 Request or download bulletin: 6551

Analytes in the MMP Panel	Analytes in the TIMP Panel
MMP-1	TIMP-1
MMP-2	TIMP-2
MMP-3	TIMP-3
MMP-7	TIMP-4
MMP-8	
MMP-9	
MMP-10	
MMP-12	
MMP-13	

Ordering Information

Catalog # Description

Bio-Plex Pro Human MMP and TIMP Premixed All-in-One Kits

171AM001M	Bio-Plex Pro Human MMP Panel 9-Plex , 1 x 96-well, includes coupled magnetic capture beads, premixed detection antibodies, standards, quality controls, detection antibody diluent HB, standard diluent HB, sample diluent HB, assay buffer, wash buffer, streptavidin-PE, 96-well flat bottom plate, sealing tape, and instructions, for the detection of MMP-1, MMP-2, MMP-3, MMP-7, MMP-8, MMP-9, MMP-10, MMP-12, and MMP-13
171AM002M	Bio-Plex Pro Human TIMP Panel 4-Plex , 1 x 96-well, includes coupled magnetic capture beads, premixed detection antibodies, standards, quality controls, detection antibody diluent HB, diluent HD, assay buffer, wash buffer, streptavidin-PE, 96-well flat bottom plate, sealing tape, and instructions, for the detection of TIMP-1, TIMP-2, TIMP-3, and TIMP-4

Bio-Plex Pro MMP Singleplex Sets

171BM001M	MMP-1 Set	171BM006M	MMP-9 Set
171BM002M	MMP-2 Set	171BM007M	MMP-10 Set
171BM003M	MMP-3 Set	171BM008M	MMP-12 Set
171BM004M	MMP-7 Set	171BM009M	MMP-13 Set
171BM005M	MMP-8 Set		

Standards

171DM0001	MMP Standard , 1 pkg of 1 vial, lyophilized mixture of 9 standard analytes: MMP-1, MMP-2, MMP-3, MMP-7, MMP-8, MMP-9, MMP-10, MMP-12, and MMP-13
171DM0501	MMP Standard , pkg of 50 lot-matched vials, lyophilized mixture of 9 standard analytes: MMP-1, MMP-2, MMP-3, MMP-7, MMP-8, MMP-9, MMP-10, MMP-12, and MMP-13

Bio-Plex Pro™ RBM Human Metabolic and Hormone Panels

The Bio-Plex Pro RBM human metabolic and hormone panels, developed in partnership with Myriad RBM®, comprise a highly relevant set of biomarkers involved in diabetes, obesity, metabolic syndrome, cardiovascular disease, and hormonal control of metabolism and reproductive organs.

The assays are built on magnetic beads to enable robust quantification of multiple proteins in human serum, plasma, and cell culture media samples. Assays are offered as premixed all-in-one kits for research involving:

- Gut hormones and adipokines
- Pituitary hormones
- Diabetes, type I and type II
- Metabolic syndrome
- Obesity
- Cardiovascular disease
- Inflammation

Key features include:

- Analytically validated to standards set forth by the Clinical Laboratory Standards Institute (CLSI)
- Manufactured in accordance with GMP guidelines
- Lot-to-lot correlation specification of $R^2 \geq 0.9$ for consistently reproducible results
- 2-level quality controls with lot-specific ranges
- Assay quick guide to get you started right away
- Fastest available assay protocols and a convenient all-in-one kit format
- Magnetic beads for simplified plate processing

For More Information

Web: bio-rad.com/bio-plexmetabolic
Request or download bulletin: 6571

The Bio-Plex Pro RBM human metabolic and hormone assays are available in 7 panels:

Human Metabolic Panel 1	Human Metabolic Panel 2	Human Metabolic Panel 3	Human Metabolic Panel 4	Human Hormone Panel 1	Human IGFBP Panel	Human IGF Panel
C-Peptide	FGF-21	AAT	ANGPTL3	FSH	IGFBP-1	IGF-1
Cortisol	FGF-23	AGP-1	Chemerin	GH	IGFBP-2	IGF-2
Pancreatic polypeptide	Galectin-3	Hemopexin	DPP4	LH	IGFBP-3	
Proinsulin	sLeptin R	RBP-4	Protein S	Prolactin	IGFBP-4	
Peptide YY	Omentin-1	Transferrin	SEPP	TSH	IGFBP-5	
	Pentraxin-3	Transthyretin			IGFBP-6	
	PON-1	VDBP			IGFBP-7	
	Vaspin					

Ordering Information

Catalog #	Description
-----------	-------------

Human Metabolic Premixed All-in-One Kits

- | | |
|-----------|--|
| 171AMR1CK | Bio-Plex Pro RBM Human Metabolic Panel 1 , 1 x 96-well, includes premixed magnetic capture beads and detection antibodies, standards, 2-level controls, standard diluent, buffers (blocking, sample dilution, and 10x assay), 10x streptavidin-PE, flat bottom plate/seals, and instructions, for the detection of C-Peptide, cortisol, pancreatic polypeptide, proinsulin, and peptide YY |
| 171AMR2CK | Bio-Plex Pro RBM Human Metabolic Panel 2 , 1 x 96-well, includes premixed magnetic capture beads and detection antibodies, standards, 2-level controls, standard diluent, buffers (blocking, sample dilution, and 10x assay), 10x streptavidin-PE, flat bottom plate/seals, and instructions, for the detection of FGF-21, FGF-23, galectin-3, sLeptin R, omentin-1, pentraxin-3, PON-1, and vaspin |
| 171AMR3CK | Bio-Plex Pro RBM Human Metabolic Panel 3 , 1 x 96-well, includes premixed magnetic capture beads and detection antibodies, standards, 2-level controls, standard diluent, buffers (blocking, sample dilution, and 10x assay), 10x streptavidin-PE, flat bottom plate/seals, and instructions, for the detection of AAT, AGP-1, hemopexin, RBP-4, transferrin, transthyretin, and VDBP |

continues

Ordering Information

Catalog #	Description
171AMR4CK	Bio-Plex Pro RBM Human Metabolic Panel 4 , 1 x 96-well, includes premixed magnetic capture beads and detection antibodies, standards, 2-level controls, standard diluent, buffers (blocking, sample dilution, and 10x assay), 10x streptavidin-PE, flat bottom plate/seals, and instructions, for the detection of ANGPTL3, chemerin, DPP4, protein S, and SEPP
171AHR1CK	Bio-Plex Pro RBM Human Hormone Panel 1 , 1 x 96-well, includes premixed magnetic capture beads and detection antibodies, standards, 2-level controls, standard diluent, buffers (blocking, sample dilution, and 10x assay), 10x streptavidin-PE, flat bottom plate/seals, and instructions, for the detection of FSH, GH, LH, prolactin, and TSH
171AGR1CK	Bio-Plex Pro RBM Human IGFBP Panel , 1 x 96-well, includes premixed magnetic capture beads and detection antibodies, standards, 2-level controls, standard diluent, buffers (blocking, sample dilution, and 10x assay), 10x streptavidin-PE, flat bottom plate/seals, and instructions, for the detection of IGFBP-1, IGFBP-2, IGFBP-3, IGFBP-4, IGFBP-5, IGFBP-6, and IGFBP-7
171AFR1CK	Bio-Plex Pro RBM Human IGF panel , 1 x 96-well, includes premixed magnetic capture beads and detection antibodies, standards, 2-level controls, standard diluent, buffers (blocking, sample dilution, and 10x assay), 10x streptavidin-PE, flat bottom plate/seals, and instructions, for the detection of IGF-1 and IGF-2

Bio-Plex Pro™ Human Inflammation Assays

The Bio-Plex Pro human inflammation assays consist of 37 assays for biomarkers associated with inflammation pathways and consist of a 37-plex, 24-plex, and Treg cytokine 12-plex assay and 37 singleplex sets that can be combined for a custom multiplex kit.

The assays are built on magnetic beads to enable robust quantification of multiple proteins in human serum, plasma, and cell culture media samples. These assays are perfect for broad research applications, including academic and preclinical studies in:

- Inflammation
- Autoimmune diseases
- Cancer research

Key features include:

- **Reproducibility** — validated to meet analytical standards
- **Reliability** — lot-to-lot calibration with low variability
- **Speed to results** — Up to 1,480 data points in 4 hours
- **Flexible ordering options** — order either premixed all-in-one kits or singleplex sets, or customize your assay with the Bio-Plex assay builder (bio-rad.com/assaybuilder)

For More Information

Web: bio-rad.com/bio-plexhumaninflammation
Request or download bulletin: 6625

The Bio-Plex Pro human inflammation panel includes the following targets:

APRIL / TNFSF13	sIL-6R α	IL-27 (p28)	Osteocalcin
BAFF / TNFSF13B	IL-8	IL-28A / IFN- λ 2	Osteopontin
sCD30 / TNFRSF8	IL-10	IL-29 / IFN- λ 1	Pentraxin-3
sCD163 Set	IL-11	IL-32	sTNFR-1
Chitinase 3-like 1	IL-12 (p40)	IL-34	sTNFR-2
gp130 / sIL-6R β	IL-12 (p70)	IL-35	TSLP
IFN- α 2	IL-19	LIGHT / TNFSF14	TWEAK / TNFSF12
IFN- β	IL-20	MMP-1	
IFN- γ	IL-22	MMP-2	
IL-2	IL-26	MMP-3	

Ordering Information

Catalog # Description

Bio-Plex Pro Human Inflammation Premixed All-in-One Kits

171AL001M	Bio-Plex Pro Human Inflammation Panel 1, 37-Plex , 1 x 96-well, includes coupled magnetic beads, detection antibodies, standards, control, buffers, diluents, streptavidin-PE, 96-well plate, and sealing tape, for the detection of 37 human inflammation biomarkers
171AL002M	Bio-Plex Pro Human Inflammation Panel 2, 24-Plex , 1 x 96-well, includes coupled magnetic beads, detection antibodies, standards, control, buffers, diluents, streptavidin-PE, 96-well plate, and sealing tape, for the detection of 24 human inflammation biomarkers
171AL003M	Bio-Plex Pro Human Inflammation Treg Cytokine Panel , 1 x 96-well, includes coupled magnetic beads, detection antibodies, standards, control, buffers, diluents, streptavidin-PE, 96-well plate, and sealing tape, for the detection of 12 human Treg biomarkers

Bio-Plex Pro Human Inflammation Singleplex Sets

171BL001M	APRIL / TNFSF13 Set	171BL021M	IL-27 (p28) Set
171BL002M	BAFF / TNFSF13B Set	171BL022M	IL-28A / IFN-λ2 Set
171BL003M	sCD30 / TNFRSF8 Set	171BL023M	IL-29 / IFN-λ1 Set
171BL004M	sCD163 Set	171BL024M	IL-32 Set
171BL005M	Chitinase 3-like 1 Set	171BL025M	IL-34 Set
171BL006M	gp130 / sIL-6Rβ Set	171BL026M	IL-35 Set
171BL007M	IFN-α2 Set	171BL027M	LIGHT / TNFSF14 Set
171BL008M	IFN-β Set	171BL028M	MMP-1 Set
171BL009M	IFN-γ Set	171BL029M	MMP-2 Set
171BL010M	IL-2 Set	171BL030M	MMP-3 Set
171BL011M	sIL-6Rα Set	171BL031M	Osteocalcin Set
171BL012M	IL-8 Set	171BL032M	Osteopontin Set
171BL013M	IL-10 Set	171BL033M	Pentraxin-3 Set
171BL014M	IL-11 Set	171BL034M	sTNFR-1 Set
171BL015M	IL-12 (p40) Set	171BL035M	sTNFR-2 Set
171BL016M	IL-12 (p70) Set	171BL036M	TSLP Set
171BL017M	IL-19 Set	171BL037M	TWEAK / TNFSF12 Set
171BL018M	IL-20 Set	171DL0001	Std, 1PK
171BL019M	IL-22 Set	171DL0050	Std, 50PK
171BL020M	IL-26 Set		

Standards

171304090M	Bio-Plex Pro Reagent Kit III Flat Bottom Plate , 1 x 96-well, includes detection antibody diluent HB, standard diluent HB, sample diluent HB, assay buffer, concentrated wash buffer, streptavidin-PE, flat bottom plate, sealing tape, for magnetic separation methods
171DL0001	Bio-Plex Pro Human Inflammation Panel 1, 37-Plex Standard , pkg of 1 vial lyophilized mixture of 37 standard analytes
171DL0050	Bio-Plex Pro Human Inflammation Panel 1, 37-Plex Standard , pkg of 50 lot-matched vials, lyophilized mixture of 37 standard analytes

Bio-Plex Pro™ Cytokine, Chemokine, and Growth Factor Assays

Bio-Plex Pro cytokine, chemokine, and growth factor assays are magnetic bead-based multiplex immunoassays offering accurate and reproducible measurements of multiple analytes simultaneously. These assays have been developed to provide reliable performance with the flexibility required to meet all of your research needs. Assays are available for human, mouse, or rat studies.

Key features includes:

- **Magnetic beads** — automated plate washing and improved reproducibility across experiments
- **Increased productivity** — measure multiple analytes simultaneously, get results in about 3 hours
- **Flexible ordering options** — order either premixed all-in-one kits or singleplex sets, or customize your assay with the Bio-Plex assay builder (bio-rad.com/assaybuilder)

- **Cross-platform compatibility** — can be used with all xMAP life science instruments supplied by any Luminex partner
- **Convenient pathway panels** — Th17, Th1/Th2, and TGF-β available

For More Information

Web: bio-rad.com/CCGFassays

Request or download bulletins: 5828, 6054, 6100, and 6110

Human Assays

Human Assays — Available Analytes

6Ckine / CCL21	IL-1α	IL-18	PDGF-BB
Basic FGF	IL-1β*	IP-10 / CXCL10*	RANTES
BCA-1 / CXCL13	IL-1ra	I-TAC / CXCL11	SCF
CTACK / CCL27*	IL-2*	LIF	SCGF-β
ENA-78 / CXCL5	IL-2Rα	MCP-1 / CCL2*	SCYB16 / CXCL16
Eotaxin / CCL11*	IL-3	MCP-2 / CCL8	SDF-1α
Eotaxin-2 / CCL24	IL-4*	MCP-3 / CCL7*	SDF-1α+β / CXCL12
Eotaxin-3 / CCL26	IL-5	MCP-4 / CCL13	TARC / CCL17
Fractalkine / CX3CL1	IL-6*	M-CSF	TECK / CCL25
GCP-2 / CXCL6	IL-7	MDC / CCL22	TGF-β1
G-CSF	IL-8 / CXCL8*	MIF*	TGF-β2
GM-CSF*	IL-9	MIG / CXCL9*	TGF-β3
Gro-α / CXCL1*	IL-10*	MIP-1α / CCL3*	TNF-α*
Gro-β / CXCL2	IL-12 (p40)	MIP-1β	TNF-β
HGF	IL-12 (p70)	MIP-1δ / CCL15	TRAIL
I-309 / CCL1	IL-13	MIP-3α / CCL20	VCAM-1
ICAM-1	IL-15	MIP-3β / CCL19	VEGF
IFN-α2	IL-16*	MPIF-1 / CCL23	
IFN-γ*	IL-17A	β-NGF	

* Analyte is present in multiple panels. If multiplexing, select analytes from the same panel to avoid cross reactivity.

Ordering Information

Catalog # Description

Human Cytokine Premixed All-in-One Kits*

M5000007A	Bio-Plex Pro Human Cytokine 8-Plex Panel , 1 x 96-well, includes coupled magnetic beads, detection antibodies, standards, assay buffer, wash buffer, detection antibody diluent, streptavidin-PE, flat bottom plate, sealing tape, standard diluent, sample diluent, for the detection of IL-2, IL-4, IL-6, IL-8, IL-10, GM-CSF, IFN- γ , TNF- α
M5000031YV	Bio-Plex Pro Human Cytokine 17-Plex Panel , 1 x 96-well, includes coupled magnetic beads, detection antibodies, standards, assay buffer, wash buffer, detection antibody diluent, streptavidin-PE, flat bottom plate, sealing tape, standard diluent, sample diluent, for the detection of IL-1 β , IL-2, IL-4, IL-5, IL-6, IL-7, IL-8, IL-10, IL-12 (p70), IL-13, IL-17, G-CSF, GM-CSF, IFN- γ , MCP-1, MIP-1 β , TNF- α
MF0005KMII	Bio-Plex Pro Human Cytokine 21-Plex Panel , 1 x 96-well, includes coupled magnetic beads, detection antibodies, standards, assay buffer, wash buffer, detection antibody diluent, streptavidin-PE, flat bottom plate, sealing tape, standard diluent, sample diluent, for the detection of IL-1 α , IL-2R α , IL-3, IL-12 (p40), IL-16, IL-18, CTACK, GRO- α , HGF, IFN- α 2, LIF, MCP-3, M-CSF, MIF, MIG, β -NGF, SCF, SCGF- β , SDF-1 α , TNF- β , TRAIL
M500KCAFOY	Bio-Plex Pro Human Cytokine 27-Plex Panel , 1 x 96-well, includes coupled magnetic beads, detection antibodies, standards, assay buffer, wash buffer, detection antibody diluent, streptavidin-PE, flat bottom plate, sealing tape, standard diluent, sample diluent, for the detection of IL-1 β , IL-1ra, IL-2, IL-4, IL-5, IL-6, IL-7, IL-8, IL-9, IL-10, IL-12 (p70), IL-13, IL-15, IL-17, basic FGF, eotaxin, G-CSF, GM-CSF, IFN- γ , IP-10, MCP-1, MIP-1 α , MIP-1 β , PDGF-BB, RANTES, TNF- α , VEGF
M5000005L3	Bio-Plex Pro Human Cytokine Th1/Th2 Panel , 1 x 96-well, includes coupled magnetic beads, detection antibodies, standards, assay buffer, wash buffer, detection antibody diluent, streptavidin-PE, flat bottom plate, sealing tape, standard diluent, sample diluent, for the detection of IL-2, IL-4, IL-5, IL-10, IL-12 (p70), IL-13, GM-CSF, IFN- γ , TNF- α

Bio-Plex Pro Human Cytokine Singleplex Sets, Group I**, 1 x 96-Well

171B5001M	IL-1β Set	171B5026M	TNF-α Set
171B5002M	IL-1ra Set	171B5027M	VEGF Set
171B5003M	IL-2 Set	171B6001M	IL-1α Set
171B5004M	IL-4 Set	171B6002M	IL-2Rα Set
171B5005M	IL-5 Set	171B6003M	IL-3 Set
171B5006M	IL-6 Set	171B6004M	IL-12 (p40) Set
171B5007M	IL-7 Set	171B6005M	IL-16 Set
171B5008M	IL-8 Set	171B6006M	CTACK Set
171B5009M	IL-9 Set	171B6007M	GRO-α Set
171B5010M	IL-10 Set	171B6008M	HGF Set
171B5011M	IL-12 (p70) Set	171B6009M	ICAM-1 Set
171B5012M	IL-13 Set	171B6010M	IFN-α2 Set
171B5013M	IL-15 Set	171B6011M	LIF Set
171B5014M	IL-17A Set	171B6012M	MCP-3 Set
171B5015M	Eotaxin Set	171B6013M	M-CSF Set
171B5016M	Basic FGF Set	171B6014M	MIF Set
171B5017M	G-CSF Set	171B6015M	MIG Set
171B5018M	GM-CSF Set	171B6016M	β-NGF Set
171B5019M	IFN-γ Set	171B6017M	SCF Set
171B5020M	IP-10 Set	171B6018M	SCGF-β Set
171B5021M	MCP-1 Set	171B6019M	SDF-1α Set
171B5022M	MIP-1α Set	171B6020M	TNF-β Set
171B5023M	MIP-1β Set	171B6021M	TRAIL Set
171B5024M	PDGF-BB Set	171B6022M	VCAM-1 Set
171B5025M	RANTES Set		

Note: IL-18 is available only in multiplex format.

Standards

171D50001	Bio-Plex Pro Human Cytokine Standards , pkg of 1 vial, lyophilized mixture of 48 analytes
171D10501	Bio-Plex Pro Human Cytokine Standards , pkg of 50 lot-matched vials, lyophilized mixture of 48 analytes

Reagent Kit — for use with human cytokine singleplex sets

171304070M	Bio-Plex Pro Reagent Kit with Flat Bottom Plate , 1 x 96-well, includes flat bottom plate, assay buffer, wash buffer, detection antibody diluent, streptavidin-PE, sealing tape, standard diluent, sample diluent, and instructions, for magnetic separation methods
------------	---

* Please contact your local Bio-Rad Sales Representative for pricing and availability of 10 x 96-well assay kits.

** Includes coupled magnetic beads and detection antibody. Requires the appropriate reagent kit and standards. Singleplex sets should not be mixed with others from different panels or groups.

continues

Ordering Information

Catalog # Description

Human Th17 Premixed All-in-One Kit

171AA001M **Bio-Plex Pro Human Th17 Cytokine 15-Plex Panel**, 1 x 96-well, includes premixed coupled magnetic beads, detection antibodies, standards, 2-level controls, detection antibody diluent, standard diluent HB, sample diluent HB, assay buffer, wash buffer, streptavidin-PE, 96-well flat bottom plate, sealing tape, and instructions, for detecting IL-1 β , IL-4, IL-6, IL-10, IL-17A, IL-17F, IL-21, IL-22, IL-23, IL-25, IL-31, IL-33, IFN- γ , sCD40L, TNF- α , (IL-17A/F available as singleplex only)

Bio-Plex Pro Human Th17 Cytokine Singleplex Sets, 1 x 96-Well**

171BA001M	IL-1β	171BA009M	IL-23
171BA002M	IL-4	171BA010M	IL-25
171BA003M	IL-6	171BA011M	IL-31
171BA004M	IL-10	171BA012M	IL-33
171BA005M	IL-17A	171BA013M	IFN-γ
171BA006M	IL-17F	171BA014M	sCD40L
171BA007M	IL-21	171BA015M	TNF-α
171BA008M	IL-22	171BA016M	IL-17A/F**

Standards

171DA0001 **Bio-Plex Pro Human Th17 Cytokine Standard**, pkg of 1 vial, lyophilized mixture of 16 standard analytes
 171DA0501 **Bio-Plex Pro Human Th17 Cytokine Standard**, pkg of 50 lot-matched vials, lyophilized mixture of 16 standard analytes

Reagent Kit II — for use with human Th17 cytokine singleplex sets

171304055M **Bio-Plex Pro Reagent Kit II with Flat Bottom Plate**, 1 x 96-well, includes detection antibody diluent, standard diluent HB, sample diluent HB, assay and wash buffers, streptavidin-PE, flat bottom plate, and sealing tape, for magnetic separation methods

Human Chemokine Premixed All-in-One Kit

171AK99MR2 **Bio-Plex Pro Human Chemokine Panel 40-plex**, 1 x 96-well, includes premixed coupled magnetic beads, detection antibodies, standards, single-level controls, detection antibody diluent HB, standard diluent HB, sample diluent HB, assay buffer, wash buffer, streptavidin-PE, 96-well flat bottom plate, sealing tape, and instructions, for detecting 40 human chemokines shown below.

Bio-Plex Pro Human Cytokine Singleplex Sets, Group II, 1 x 96-Well**

171BK11MR2	6Ckine / CCL21 Set	171BK33MR2	IL-16 Set
171BK12MR2	BCA-1 / CXCL13 Set	171BK34MR2	IP-10 / CXCL10 Set
171BK13MR2	CTACK / CCL27 Set	171BK35MR2	I-TAC / CXCL11 Set
171BK14MR2	ENA-78 / CXCL5 Set	171BK36MR2	MCP-1 / CCL2 Set
171BK15MR2	Eotaxin / CCL11 Set	171BK37MR2	MCP-2 / CCL8 Set
171BK16MR2	Eotaxin-2 / CCL24 Set	171BK38MR2	MCP-3 / CCL7 Set
171BK17MR2	Eotaxin-3 / CCL26 Set	171BK39MR2	MCP-4 / CCL13 Set
171BK18MR2	Fractalkine / CX3CL1	171BK41MR2	MDC / CCL22 Set
171BK19MR2	GCP-2 / CXCL6 Set	171BK42MR2	MIF Set
171BK21MR2	GM-CSF Set	171BK43MR2	MIG / CXCL9 Set
171BK22MR2	Gro-α / CXCL1 Set	171BK44MR2	MIP-1α / CCL3 Set
171BK23MR2	Gro-β / CXCL2 Set	171BK46MR2	MIP-1δ / CCL15 Set
171BK24MR2	I-309 / CCL1 Set	171BK47MR2	MIP-3α / CCL20 Set
171BK25MR2	IFN-γ Set	171BK48MR2	MIP-3β / CCL19 Set
171BK26MR2	IL-1β Set	171BK49MR2	MPIF-1 / CCL23 Set
171BK27MR2	IL-2 Set	171BK51MR2	SCYB16 / CXCL16 Set
171BK28MR2	IL-4 Set	171BK52MR2	SDF-1α+β / CXCL12 Set
171BK29MR2	IL-6 Set	171BK53MR2	TARC / CCL17 Set
171BK31MR2	IL-8 / CXCL8 Set	171BK54MR2	TECK / CCL25 Set
171BK32MR2	IL-10 Set	171BK55MR2	TNF-α Set

Standards

171DK0001 **Bio-Plex Pro Human Chemokine Standard**, pkg of 1 vial, lyophilized mixture of 40 standard analytes
 171DK0050 **Bio-Plex Pro Human Chemokine Standard**, pkg of 50 lot-matched vials, lyophilized mixture of 40 standard analytes

Reagent Kit III — for use with human cytokine singleplex sets from groups I and II

171304090M **Bio-Plex Pro Reagent Kit III Flat Bottom Plate**, 1 x 96-well, includes detection antibody diluent HB, standard diluent HB, sample diluent HB, assay buffer, concentrated wash buffer, streptavidin-PE, flat bottom plate, sealing tape, for magnetic separation methods

** Includes coupled magnetic beads and detection antibody. Requires the appropriate reagent kit and standards. Singleplex sets should not be mixed with others from different panels or groups.

Mouse Assays

Mouse Assays – Available Analytes

Basic FGF	IL-5	IL-22	MIP-1 α
CD40L	IL-6	IL-23 (p19)	MIP-1 β
Eotaxin	IL-9	IL-25 / IL-17E	MIP-2
G-CSF	IL-10	IL-27 (p28)	MIP-3 α
GM-CSF	IL-12 (p40)	IL-31	PDGF-BB
Gro / KC	IL-12 (p70)	IL-33	RANTES
IFN- γ	IL-13	ICAM-1	TGF- β 1
IL-1 α	IL-15	KC	TGF- β 2
IL-1 β	IL-17A	LIF	TGF- β 3
IL-2	IL-17F	MCP-1 / MCAF	TNF- α
IL-3	IL-18	M-CSF	VEGF
IL-4	IL-21	MIG	

Ordering Information

Catalog # Description

Mouse Cytokine Premixed All-in-One Kits*

M60000007A	Bio-Plex Pro Mouse Cytokine 8-Plex Panel , 1 x 96-well, includes coupled magnetic beads, detection antibodies, standards, assay buffer, wash buffer, detection antibody diluent, streptavidin-PE, flat bottom plate, sealing tape, standard diluent, sample diluent, for the detection of IL-1 β , IL-2, IL-4, IL-5, IL-10, GM-CSF, IFN- γ , TNF- α
MD0000000EL	Bio-Plex Pro Mouse Cytokine 9-Plex Panel , 1 x 96-well, includes coupled magnetic beads, detection antibodies, standards, assay buffer, wash buffer, detection antibody diluent, streptavidin-PE, flat bottom plate, sealing tape, standard diluent, sample diluent, for the detection of IL-15, IL-18, basic FGF, LIF, M-CSF, MIG, MIP-2, PDGF-BB, VEGF
M60009RDPD	Bio-Plex Pro Mouse Cytokine 23-Plex Panel , 1 x 96-well, includes coupled magnetic beads, detection antibodies, standards, assay buffer, wash buffer, detection antibody diluent, streptavidin-PE, flat bottom plate, sealing tape, standard diluent, sample diluent, for the detection of IL-1 α , IL-1 β , IL-2, IL-3, IL-4, IL-5, IL-6, IL-9, IL-10, IL-12 (p40), IL-12 (p70), IL-13, IL-17, eotaxin, G-CSF, GM-CSF, IFN- γ , KC, MCP-1, MIP-1 α , MIP-1 β , RANTES, TNF- α
M6000003J7	Bio-Plex Pro Mouse Cytokine Th1/Th2 Panel , 1 x 96-well, includes coupled magnetic beads, detection antibodies, standards, assay buffer, wash buffer, detection antibody diluent, streptavidin-PE, flat bottom plate, sealing tape, standard diluent, sample diluent, for the detection of IL-2, IL-4, IL-5, IL-10, IL-12 (p70), GM-CSF, IFN- γ , TNF- α
L6000004C6	Bio-Plex Pro Mouse Cytokine Th1 7-Plex Panel , 1 x 96-well, includes coupled magnetic beads, detection antibodies, standards, assay buffer, wash buffer, detection antibody diluent, streptavidin-PE, flat bottom plate, sealing tape, standard diluent, sample diluent, for the detection of IL-1 β , IL-2, IL-6, IL-10, IL-12 (p70), IFN α , TNF- α
L60000UKVT	Bio-Plex Pro Mouse Cytokine Th2 7-Plex Panel , 1 x 96-well, includes coupled magnetic beads, detection antibodies, standards, assay buffer, wash buffer, detection antibody diluent, streptavidin-PE, flat bottom plate, sealing tape, standard diluent, sample diluent, for the detection of IL-2, IL-4, IL-5, IL-6, IL-9, IL-10, IL-13

Mouse Th17 Premixed All-in-One Kits

M6000007NY	Bio-Plex Pro Mouse Cytokine Th17 Panel A 6-Plex Group I , 1 x 96-well, includes coupled magnetic beads, detection antibodies, standard, assay buffer, wash buffer, detection antibody diluent, streptavidin-PE, flat bottom plate, sealing tape, standard diluent, sample diluent, and instructions, for the detection of IL-1 β , IL-6, IL-10, IL-17A, IFN- γ , TNF- α
171FA001M	Bio-Plex Pro Mouse Cytokine Th17 Panel B 8-Plex Group III , 1 x 96-well, includes coupled magnetic beads, detection antibodies, standards, assay buffer, wash buffer, detection antibody diluent, streptavidin-PE, flat bottom plate, sealing tape, standard diluent, sample diluent, for the detection of CD40L, IL-17F, IL-21, IL-22, IL-23 (p19), IL-31, IL-33, MIP-3 α

* Please contact your local Bio-Rad Sales Representative for pricing and availability of 10 x 96-well assay kits.

continues

Ordering Information

Catalog #	Description	Catalog #	Description
Bio-Plex Pro Mouse Cytokine Singleplex Sets, Group I*, 1 x 96-Well			
171G5001M	IL-1 α Set	171G5013M	IL-17A Set
171G5002M	IL-1 β Set	171G5014M	Eotaxin Set
171G5003M	IL-2 Set	171G5015M	G-CSF Set
171G5004M	IL-3 Set	171G5016M	GM-CSF Set
171G5005M	IL-4 Set	171G5017M	IFN- γ Set
171G5006M	IL-5 Set	171G5018M	KC Set
171G5007M	IL-6 Set	171G5019M	MCP-1 Set
171G5008M	IL-9 Set	171G5020M	MIP-1 α Set
171G5009M	IL-10 Set	171G5021M	MIP-1 β Set
171G5010M	IL-12 (p40) Set	171G5022M	RANTES Set
171G5011M	IL-12 (p70) Set	171G5023M	TNF- α Set
171G5012M	IL-13 Set		

Standards

171I50001	Bio-Plex Pro Mouse Cytokine Standards Group I, pkg of 1 vial, lyophilized mixture of 23 analytes
171I10501	Bio-Plex Pro Mouse Cytokine Standards Group I, pkg of 50 lot-matched vials, lyophilized mixture of 23 analytes

Bio-Plex Pro Mouse Cytokine Singleplex Sets, Group II*, 1 x 96-Well

171G6001M	IL-15 Set	171G6005M	MIG Set
171G6002M	Basic FGF Set	171G6006M	MIP-2 Set
171G6003M	LIF Set	171G6007M	PDGF-BB Set
171G6004M	M-CSF Set	171G6008M	VEGF Set

Standards

171I60001	Bio-Plex Pro Mouse Cytokine Standards Group II, pkg of 1 vial, lyophilized mixture of 9 analytes
171I10502	Bio-Plex Pro Mouse Cytokine Standards Group II, pkg of 50 lot-matched vials, lyophilized mixture of 9 analytes

Bio-Plex Pro Mouse Cytokine Singleplex Sets, Group III*, 1 x 96-Well

171GA001M	CD40L Set	171GA007M	IL-27 (p28) Set
171GA002M	IL-17F Set	171GA008M	IL-31 Set
171GA003M	IL-21 Set	171GA009M	IL-33 Set
171GA004M	IL-22 Set	171GA010M	ICAM-1 Set**
171GA005M	IL-23 (p19) Set	171GA011M	MIP-3 α Set
171GA006M	IL-25 Set		

Standards

171IA0001	Bio-Plex Pro Mouse Cytokine Standards Group III, pkg of 1 vial, lyophilized mixture for detecting 11 analytes
171IA0501	Bio-Plex Pro Mouse Cytokine Standards Group III, pkg of 50 lot-matched vials, lyophilized mixture for detecting 11 analytes

Reagent Kits – for use with mouse cytokine singleplex sets from Groups I, II, and III

171304070M	Bio-Plex Pro Reagent Kit with Flat Bottom Plate , 1 x 96-well, includes flat bottom plate, assay buffer, wash buffer, detection antibody diluent, streptavidin-PE, sealing tape, standard diluent, sample diluent, and instructions, for magnetic separation methods
171304071	Bio-Plex Pro Reagent Kit , 10 x 96-well, includes assay buffer, wash buffer, detection antibody diluent, streptavidin-PE, sealing tape, standard diluent, sample diluent
171304080M	Bio-Plex Pro High Dilution Reagent Kit , 1 x 96-well, includes assay buffer, wash buffer, detection antibody diluent, streptavidin-PE, flat bottom plate, sealing tape, standard diluent, sample diluent

* Includes coupled magnetic beads and detection antibody. Requires the appropriate reagent kit and standards. Singleplex sets should not be mixed with others from different panels or groups.

** Requires high dilution reagent kit.

Rat Assays

Rat Assays — Available Analytes

EPO	IL-4	IL-17A	RANTES
G-CSF	IL-5	IL-18*	TGF- β 1
GM-CSF	IL-6	KC	TGF- β 2
Gro / KC	IL-7	MCP-1	TGF- β 3
IFN- γ	IL-10	M-CSF	TNF- α
IL-1 α	IL-12 (p40)	MIP-1 α	VEGF
IL-1 β	IL-12 (p70)	MIP-2	
IL-2	IL-13	MIP-3 α	

* IL-18 is not available as a singleplex.

Ordering Information

Catalog # Description

Rat Cytokine Premixed All-in-One Kits*

171K1001M	Bio-Plex Pro Rat Cytokine 24-Plex Panel , 1 x 96-well, includes coupled magnetic beads, detection antibodies, standards, assay buffer, wash buffer, detection antibody diluent, streptavidin-PE, flat bottom plate, sealing tape, standard diluent, sample diluent, for the detection of EPO, G-CSF, GM-CSF, Gro/KC, IFN- γ , IL-1 α , IL-1 β , IL-2, IL-4, IL-5, IL-6, IL-7, IL-10, IL-12 (p70), IL-13, IL-17A, IL-18, MCP-1, M-CSF, MIP-1 α , MIP-3 α , RANTES, TNF- α , VEGF
171K1002M	Bio-Plex Pro Rat Cytokine Th1/Th2 12-Plex Panel , 1 x 96-well, includes coupled magnetic beads, detection antibodies, standard, assay buffer, wash buffer, detection antibody diluent, streptavidin-PE, flat bottom plate, sealing tape, standard diluent, sample diluent and instructions, for the detection of IL- α , IL-1 β , IL-2, IL-4, IL-5, IL-6, IL-10, IL-12 (p70), IL-13, GM-CSF, IFN- γ , TNF- α

Catalog # Description Catalog # Description

Bio-Plex Pro Rat Cytokine Singleplex Sets**, 1 x 96-Well

171L1002M	EPO Set	171L1015M	IL-12 (p40) Set
171L1003M	G-CSF Set	171L1016M	IL-12 (p70) Set
171L1004M	GM-CSF Set	171L1017M	IL-13 Set
171L1005M	Gro / KC Set	171L1018M	IL-17A Set
171L1006M	IFN-γ Set	171L1020M	M-CSF Set
171L1007M	IL-1α Set	171L1027M	MCP-1 Set
171L1008M	IL-1β Set	171L1021M	MIP-1α Set
171L1009M	IL-2 Set	171L1022M	MIP-2 Set
171L1010M	IL-4 Set	171L1023M	MIP-3α Set
171L1011M	IL-5 Set	171L1024M	RANTES Set
171L1012M	IL-6 Set	171L1025M	TNF-α Set
171L1013M	IL-7 Set	171L1026M	VEGF Set
171L1014M	IL-10 Set		

Standards

171NZ0001	Bio-Plex Pro Rat Cytokine Standards , pkg of 1 vial, lyophilized mixture of 31 analytes. Compatible with rat cytokine and rat diabetes assays
171NZ0501	Bio-Plex Pro Rat Cytokine Standards , pkg of 50 lot-matched vials, lyophilized mixture of 31 rat analytes. Compatible with rat cytokine and rat diabetes assays

Reagent Kits — for use with human cytokine singleplex sets from groups I and II

171304070	Bio-Plex Pro Reagent Kit , 1 x 96-well, includes assay buffer, wash buffer, detection antibody diluent, streptavidin-PE, sealing tape, standard diluent, sample diluent, for vacuum separation methods
171304070M	Bio-Plex Pro Reagent Kit with Flat Bottom Plate , 1 x 96-well, includes flat bottom plate, assay buffer, wash buffer, detection antibody diluent, streptavidin-PE, sealing tape, standard diluent, sample diluent, and instructions, for magnetic separation methods
171304071	Bio-Plex Pro Reagent Kit , 10 x 96-well, includes assay buffer, wash buffer, detection antibody diluent, streptavidin-PE, sealing tape, standard diluent, sample diluent

* Please contact your local Bio-Rad Sales Representative for pricing and availability of 10 x 96-well assay kits.

** Includes coupled magnetic beads and detection antibody. Requires the appropriate reagent kit and standards. Singleplex sets should not be mixed with others from different panels or groups.

Multi-Species TGF- β Assays

Ordering Information

Catalog # Description

Bio-Plex Pro TGF- β Premixed All-in-One Kit (compatible with Human, Mouse, and Rat samples)

171W4001M **Bio-Plex Pro TGF- β 3-plex Assay**, 1 x 96-well, includes coupled magnetic beads, detection antibodies, standards, assay buffer, wash buffer, detection antibody diluent, streptavidin-PE, flat bottom plate, sealing tape, standard diluent, sample diluent, for the detection of TGF- β 1, TGF- β 2, TGF- β 3

Bio-Plex Pro TGF- β Singleplex Sets*, 1 x 96-Well

171V4001M **TGF- β 1 Set**
 171V4002M **TGF- β 2 Set**
 171V4003M **TGF- β 3 Set**

Standards

171X40001 **Bio-Plex Pro TGF- β Standard**, pkg of 1 vial, lyophilized standard for detecting TGF- β 1, TGF- β 2, and TGF- β 3 analytes
 171X40501 **Bio-Plex Pro TGF- β Standard**, pkg of 50 lot-matched vials, lyophilized standard for detecting TGF- β 1, TGF- β 2, and TGF- β 3 analytes

Reagent Kits – for use with rat cytokine and TGF- β singleplex sets

171304070 **Bio-Plex Pro Reagent Kit**, 1 x 96-well, includes assay buffer, wash buffer, detection antibody diluent, streptavidin-PE, sealing tape, standard diluent, sample diluent, for vacuum separation methods
 171304070M **Bio-Plex Pro Reagent Kit with Flat Bottom Plate**, 1 x 96-well, includes flat bottom plate, assay buffer, wash buffer, detection antibody diluent, streptavidin-PE, sealing tape, standard diluent, sample diluent, and instructions, for magnetic separation methods
 171304071 **Bio-Plex Pro Reagent Kit**, 10 x 96-well, includes assay buffer, wash buffer, detection standards, assay buffer, wash buffer, detection antibody diluent, streptavidin-PE, flat bottom plate, sealing tape, standard diluent, sample diluent, for the detection of TGF- β 1, TGF- β 2, TGF- β 3

Bio-Plex Pro Assay Accessories

171304500 **Bio-Plex Wash Buffer**, 1.5 L
 171025001 **Bio-Plex Pro Flat Bottom Plates****, 40 x 96-well plates
 171304502 **Filter Plate**, 1 x 96-well filter plate with clear plastic lid, plate-holder tray, sealing tape not included

* Includes coupled magnetic beads and detection antibody. Requires the appropriate reagent kit and standards. Singleplex sets should not be mixed with others from different panels or groups.

** Required for washing Bio-Plex Pro assays or other magnetic bead-based assays using Bio-Plex Pro and Bio-Plex Pro II wash stations.

Note: x-Plex assay panels can be ordered with any combination of available assays. For more information, go to bio-rad.com/bio-plex/assaybuilder.

Bio-Plex Pro™ Cell Signaling Assays

Cell Signaling Assays

The Bio-Plex Pro cell signaling assays are magnetic bead-based immunoassays designed to meet the sensitivity needs of the most discerning scientists. The multiplex format enables robust, reproducible, and simultaneous measurement of proteins involved in key intracellular signaling pathways. Choose from a broad selection of phosphoprotein and total protein targets to investigate pathways associated with cancer, cardiovascular disorders, inflammation, drug mechanism of action, diabetes, toxicology, and neurological disorders.

These assays incorporate several features to enhance both quality and ease of use:

- Assay quick guide to get you started right away
- Assay protocol optimized for exceptional sensitivity and broad dynamic range
- Flexible ordering options — order singleplex sets or visit bio-rad.com/assaybuilder to configure a custom premixed kit

Bio-Plex Assays

Bio-Plex Pro Cell Signaling Assays

bio-rad.com/bio-plex

Available Assays

Phosphoprotein	Lysate Control*	Catalog #
Akt (Ser ⁴⁷³) Akt (Thr ³⁰⁸) Erk1/2 (Thr ²⁰² /Tyr ²⁰⁴ , Thr ¹⁸⁵ /Tyr ¹⁸⁷)	GSK-3 α / β (Ser ²¹ /Ser ⁹) MEK1 (Ser ²¹⁷ /Ser ²²¹) EGF-treated HEK-293	171-YZ0001
c-Jun (Ser ⁶³) JNK (Thr ¹⁸³ /Tyr ¹⁸⁵) p38 MAPK (Thr ¹⁸⁰ /Tyr ¹⁸²)	ATF-2 (Thr ⁷¹) CREB (Ser ¹³³) p53 (Ser ¹⁵) UV-treated HEK-293	171-YZ0009
EGFR (Tyr ¹⁰⁶⁸)	EGFR (Tyr ¹¹⁷³) EGF-treated HeLa	171-YZ0002
HER-2 (Tyr ¹²⁴⁸) HSP27 (Ser ⁷⁸)	p90 RSK (Ser ³⁸⁰) S6 ribosomal protein (Ser ²³⁵ /Ser ²³⁶) EGF-treated SK-BR-3	171-YZ0003
IGF-1R (Tyr ¹¹³¹)	IR- β (Tyr ¹¹⁴⁶) IGF-1-treated HEK-293	171-YZ0005
I κ B- α (Ser ³² /Ser ³⁶) NF- κ B p65 (Ser ⁵³⁶)	Smad2 (Ser ⁴⁶⁵ /Ser ⁴⁶⁷) IR- β (Tyr ¹¹⁴⁶) TNF- α -treated HeLa	171-YZ0008
p70 S6 Kinase (Thr ⁴²¹ /Ser ⁴²⁴)	p70 S6 Kinase (Thr ³⁸⁹) NGF β -treated PC-12	171-YZ0006
PDGFR- α (Tyr ⁷⁵⁴) PDGFR- β (Tyr ⁷⁵¹) BAD (Ser ¹³⁶)	IRS-1 (Ser ⁶³⁶ /Ser ⁶³⁹) mTOR (Ser ²⁴⁴⁸) PTEN (Ser ³⁸⁰) PDGF-treated NIH3T3	171-YZ0007
Stat1 (Tyr ⁷⁰¹) Stat3 (Ser ⁷²⁷)	Stat3 (Tyr ⁷⁰⁵) IFN- α -treated HeLa	171-YZ0004
VEGFR-2 (Tyr ¹¹⁷⁵)	VEGF-treated HUVEC	171-YZ0010
ZAP-70 (Tyr ³¹⁹)	H ₂ O ₂ -treated Jurkat	171-YZ0012
Btk (Tyr ²²³) Lyn (Tyr ⁵⁰⁷)	PI3K p85 (Tyr ⁴⁵⁸) Syk (Tyr ³⁵²) H ₂ O ₂ -treated Ramos	171-YZ0011
c-Abl (Tyr ²⁴⁵) Src (Tyr ⁴¹⁶)	Untreated K-562 Src-transfected NIH3T3	171-YZT003 171-YZ0013
Negative control for all phosphoprotein assays	Phosphatase-treated HeLa	171-YZB001

Total Target	Lysate Control*	Catalog #
Total Akt Total Erk 1/2 Total GSK-3 β Total I κ B- α	Total JNK Total MEK1 Total mTOR Total p38 MAPK	Total p70 S6 Kinase Total PTEN Total Smad2 Total IGF-1R
Total c-Jun Total CREB	Untreated HeLa	171-YZT002
Total Src	Untreated HEK-293	171-YZT001
Total Btk	Src-transfected NIH3T3	171-YZ0013
Total ZAP-70	H ₂ O ₂ -treated Ramos	171-YZ0011
Total HER-2	H ₂ O ₂ -treated Jurkat	171-YZ0012
Negative control for all target assays	EFG-treated SK-BR-3	171-YZ0003
	Detection antibody diluent**	

Housekeeping Protein	Lysate Control*	Catalog #
Human GAPDH	Untreated HeLa	171-YZT002
β -Actin	Untreated HeLa	171-YZT002
Negative control for all target assays	Detection antibody diluent**	

* All controls are shipped as one vial of lyophilized cell lysate.

** Included with the Bio-Plex Pro cell signaling reagent kit (#171304006M).

For More Information

Web: bio-rad.com/cellsignalingassays

Request or download bulletins: 5405 and 5483

Ordering Information

Catalog #	Description
-----------	-------------

Premixed All-in-One Kits

LQ00006JKOK0RR

Bio-Plex Pro Cell Signaling Akt Panel 8-Plex Assay, 1 x 96-well

LQ00000S6KLB1S

Bio-Plex Pro Cell Signaling MAPK Panel 9-Plex Assay, 1 x 96-well

continues

Ordering Information

Catalog #	Phosphoprotein	Catalog #	Phosphoprotein
Phosphoprotein Singleplex Sets*			
171V50001M	Akt (Ser ⁴⁷³)	171V50033M	mTOR (Ser ²⁴⁴⁸)
171V50002M	Akt (Thr ³⁰⁹)	171V50013M	NF-κB p65 (Ser ⁵³⁶)
171V50024M	ATF-2 (Thr ⁷¹)	171V50014M	p38 MAPK (Thr ¹⁸⁰ /Tyr ¹⁸²)
171V50025M	BAD (Tyr ²²³)	171V50034M	p53 (Ser ¹⁵)
171V50026M	Btk (Tyr ²²³)	171V50016M	p70 S6 kinase (Thr ³⁸⁹)
171V50027M	c-Abl (Tyr ²⁴⁵)	171V50015M	p70 S6 kinase (Thr ⁴²¹ /Ser ⁴²⁴)
171V50003M	c-Jun (Ser ⁶³)	171V50035M	p90 RSK (Ser ³⁸⁰)
171V50028M	CREB (Ser ¹³³)	171V50017M	PDGFR-α (Tyr ⁷⁵⁴)
171V50004M	EGFR (Tyr ¹⁰⁶⁸)	171V50018M	PDGFR-β (Tyr ⁷⁵¹)
171V50005M	EGFR (Tyr ¹¹⁷³)	171V50036M	PI3K p85 (Tyr ⁴⁵⁸)
171V50006M	Erk 1/2 (Thr ²⁰² /Tyr ²⁰⁴ , Thr ¹⁸⁵ /Tyr ¹⁸⁷)	171V50037M	PTEN (Ser ³⁸⁰)
171V50007M	GSK-3α/β (Ser ²¹ /Ser ⁹)	171V50038M	S6 ribosomal protein (Ser ²³⁵ /Ser ²³⁶)
171V50008M	HER-2 (Tyr ¹²⁴⁸)	171V50019M	Smad2 (Ser ⁴⁶⁵ /Ser ⁴⁶⁷)
171V50029M	HSP27 (Ser ⁷⁸)	171V50039M	Src (Tyr ⁴¹⁶)
171V50009M	IGF-1R (Tyr ¹¹³¹)	171V50020M	Stat1 (Tyr ⁷⁰¹)
171V50031M	IR-β (Tyr ¹¹⁴⁶)	171V50021M	Stat3 (Ser ⁷²⁷)
171V50030M	IRS-1 (Ser ⁶³⁶ /Ser ⁶³⁹)	171V50022M	Stat3 (Tyr ⁷⁰⁵)
171V50010M	IκB-α (Ser ³² /Ser ³⁶)	171V50040M	Syk (Tyr ³⁵²)
171V50011M	JNK (Thr ¹⁸³ /Tyr ¹⁸⁵)	171V50023M	VEGFR-2 (Tyr ¹¹⁷⁵)
171V50032M	Lyn (Tyr ⁵⁰⁷)	171V50041M	ZAP-70 (Tyr ³¹⁹)
171V50012M	MEK1 (Ser ²¹⁷ /Ser ²²¹)		
Total Target Singleplex Sets*			
171V60001M	Akt	171V60007M	JNK
171V60012M	Btk	171V60008M	MEK1
171V60002M	c-Jun	171V60015M	mTOR
171V60013M	CREB	171V60009M	p38 MAPK
171V60003M	Erk1/2	171V60010M	p70 S6 kinase
171V60004M	GSK-3β	171V60016M	PTEN
171V60005M	HER-2	171V60011M	Smad2
171V60014M	IGF-1R	171V60017M	Src
171V60006M	IκB-α	171V60018M	ZAP-70
Housekeeping Protein Singleplex Sets*			
171V60019M	Human GAPDH	171V60020M	β-Actin

Bio-Plex Pro Cell Signaling Reagents — cell signaling reagent kits are required to run the singleplex sets

- 171304006M **Bio-Plex Pro Cell Signaling Reagent Kit**, 1 x 96-well, includes assay cell lysis buffer, cell lysis factor QG, cell wash buffer, bead resuspension buffer, detection antibody diluent, wash buffer, streptavidin-PE, 96-well flat bottom plate, sealing tape, instructions
- 171304515 **Bio-Plex Pro Cell Signaling Wash Buffer**, 330 ml, for 1 x 96-well assay, for use with Bio-Plex Pro cell signaling assays only, compatible with both magnetic and vacuum separation methods

* Lysate controls are recommended for singleplex sets.

Bio-Plex Pro™ RBM Apoptosis Assays

Apoptosis Assays

The Bio-Plex Pro RBM apoptosis assays, developed in partnership with Myriad RBM, comprise a highly relevant set of intracellular proteins involved in the commitment, onset, and induction of apoptosis by the intrinsic pathway. The assays are built on magnetic beads to enable robust quantification of multiple proteins in cell and tissue lysates, and are available as premixed all-in-one kits.



Key features include:

- Analytically validated to standards set forth by the Clinical Laboratory Standards Institute (CLSI)
- Manufactured in accordance with GMP guidelines
- Lot-to-lot correlation specification of $R^2 \geq 0.9$ for consistently reproducible results
- 2-level quality controls with lot-specific ranges
- Assay quick guide to get you started right away

- Fastest available assay protocols and a convenient all-in-one kit format
- Magnetic beads for simplified plate processing

Available Bio-Plex Pro RBM Apoptosis Analytes

Panel 1	Panel 2	Panel 3
Bak	Bad	Active caspase-3
Bax	Bax / Bcl-2 dimer	Bcl-xL / Bak dimer
Lamin B	Bcl-xL	Mcl-1 / Bak dimer
Smac	Bim	Survivin
	Mcl-1	

Ordering Information

Catalog #	Description
-----------	-------------

Bio-Plex Pro RBM Apoptosis Assays

171WAR1CK	Bio-Plex Pro RBM Apoptosis Panel 1 , 1 x 96-well all-in-one kit that includes premixed magnetic capture beads and detection antibodies, standards, 2-level controls, standard diluent, buffers (blocking, lysate dilution (LDB), cytosolic extraction (CEB), 10x assay), 10x streptavidin-PE, flat bottom plate, plate seals, and instructions, for the detection of the following analytes in cell and tissue lysates: Bak, Bax, Lamin B, and Smac
171WAR2CK	Bio-Plex Pro RBM Apoptosis Panel 2 , 1 x 96-well all-in-one kit that includes premixed magnetic capture beads and detection antibodies, standards, 2-level controls, standard diluent, buffers (blocking, lysate dilution (LDB), cytosolic extraction (CEB), 10x assay), 10x streptavidin-PE, flat bottom plate, plate seals, and instructions, for the detection of the following analytes in cell and tissue lysates: Bad, Bax / Bcl-2 dimer, Bcl-xL, Bim, and Mcl-1
171WAR3CK	Bio-Plex Pro RBM Apoptosis Panel 3 , 1 x 96-well all-in-one kit that includes premixed magnetic capture beads and detection antibodies, standards, 2-level controls, standard diluent, buffers (blocking, lysate dilution (LDB), cytosolic extraction (CEB), 10x assay), 10x streptavidin-PE, flat bottom plate, plate seals, and instructions, for the detection of the following analytes in cell and tissue lysates: active caspase-3, Bcl-xL / Bak dimer, Mcl-1 / Bak dimer, and survivin

Bio-Plex Pro™ RBM Kidney Toxicity Assays

Kidney Toxicity Assays

The Bio-Plex Pro RBM kidney toxicity assays, developed in partnership with Myriad RBM, comprise a highly relevant set of biomarkers for early detection and characterization of kidney toxicity/injury.

The assays are built on magnetic beads to enable robust quantification of multiple proteins in human, canine, and rat urine samples.

Key features include:

- Analytically validated to standards set forth by the Clinical Laboratory Standards Institute (CLSI)
- Manufactured in accordance with GMP guidelines



- Lot-to-lot correlation specification of $R^2 \geq 0.9$ for consistently reproducible results
- 2-level quality controls with lot-specific ranges
- Assay quick guide to get you started right away
- Fastest available assay protocols and a convenient all-in-one kit format
- Magnetic beads for simplified plate processing

Ordering Information

Catalog #	Description
-----------	-------------

Bio-Plex Pro RBM Kidney Toxicity Assays

171ATR1CK	Bio-Plex Pro RBM Human Kidney Toxicity Panel 1 , 1 x 96-well, includes premixed magnetic capture beads, premixed detection antibodies, standards mix, 2-level controls, blocking buffer, standard diluent, sample dilution buffer, 10x assay buffer, 10x streptavidin-PE, 96-well flat bottom plate, plate seals, and instructions, for the detection of the following analytes: calbindin, clusterin, GST- π , IL-18, KIM-1, MCP-1
-----------	--

continues

Ordering Information

Catalog #	Description
171ATR2CK	Bio-Plex Pro RBM Human Kidney Toxicity Panel 2 , 1 x 96-well, includes premixed magnetic capture beads, premixed detection antibodies, standards mix, 2-level controls, blocking buffer, standard diluent, sample dilution buffer, 10x assay buffer, 10x streptavidin-PE, 96-well flat bottom plate, plate seals, and instructions, for the detection of the following analytes: albumin, B2M, cystatin C, NGAL, osteopontin, TFF3
171QTR1CK	Bio-Plex Pro RBM Canine Kidney Toxicity Panel 1 , 1 x 96-well, includes premixed magnetic capture beads, premixed detection antibodies, standards mix, 2-level controls, blocking buffer, standard diluent, sample dilution buffer, 10x assay buffer, 10x streptavidin-PE, 96-well flat bottom plate, plate seals, and instructions, for the detection of the following analytes: clusterin, KIM-1, MCP-1, NGAL
171QTR2CK	Bio-Plex Pro RBM Canine Kidney Toxicity Albumin Kit , 1 x 96-well, includes premixed magnetic capture beads, premixed detection antibodies, standards mix, 2-level controls, blocking buffer, standard diluent, sample dilution buffer, 10x assay buffer, 10x streptavidin-PE, 96-well flat bottom plate, plate seals, and instructions, for the detection of albumin
171KTR1CK	Bio-Plex Pro RBM Rat Kidney Toxicity Panel 1 , 1 x 96-well, includes premixed magnetic capture beads, premixed detection antibodies, standards mix, 2-level controls, blocking buffer, standard diluent, sample dilution buffer, 10x assay buffer, 10x streptavidin-PE, 96-well flat bottom plate, plate seals, and instructions, for the detection of the following analytes: clusterin, IL-18, KIM-1, MCP-1, osteopontin
171KTR2CK	Bio-Plex Pro RBM Rat Kidney Toxicity Panel 2 , 1 x 96-well, includes premixed magnetic capture beads, premixed detection antibodies, standards mix, 2-level controls, blocking buffer, standard diluent, sample dilution buffer, 10x assay buffer, 10x streptavidin-PE, 96-well flat bottom plate, plate seals, and instructions, for the detection of the following analytes: B2M, calbindin, cystatin C, NGAL
171KTR3CK	Bio-Plex Pro RBM Rat Kidney Toxicity Albumin Kit , 1 x 96-well, includes premixed magnetic capture beads, premixed detection antibodies, standards mix, 2-level controls, blocking buffer, standard diluent, sample dilution buffer, 10x assay buffer, 10x streptavidin-PE, 96-well flat bottom plate, plate seals, and instructions, for the detection of albumin

Bio-Plex Pro™ Human Cancer Biomarker Panels**Human Cancer Biomarker Panels**

Bio-Plex Pro human cancer biomarker panels are a unique blend of magnetic bead-based assays designed to meet the needs of the most discerning preclinical and clinical researchers. The multiplex format enables robust and reproducible measurement of 34 cancer biomarkers involved in disease processes such as angiogenesis, metastasis, cell proliferation, cell adhesion/migration, apoptosis, and inflammation. The assays incorporate several features to enhance both quality and ease of use:

- **Magnetic beads** — simplified plate processing and improved reproducibility
- **Flexible ordering options** — available in 16- and 18-plex premixed all-in-one kits, singleplex sets, or customized assays using the Bio-Plex assay builder (bio-rad.com/assaybuilder)
- **Optimized protocols** — high precision and broad assay working ranges
- **Assay quick guide** — to get you started right away
- **2-level quality controls** — included with premixed kits
- **Robustness** — tested in serum, plasma, and other biological fluids



- **Convenience** — all-in-one kit format
- **Compatible** — with Bio-Plex™ 200, Bio-Plex 3D, and Bio-Plex® MAGPIX™ systems

For More Information

Web: bio-rad.com/bio-plexprocancer

Request or download bulletins: 6156 and 6159

Available Human Cancer Biomarker Panel 1 Analytes

sEGFR	sIL-6R α	Prolactin
FGF-basic	Leptin	SCF
Follistatin	Osteopontin	sTIE-2
G-CSF	PDGF-AB/BB	sVEGFR-1
sHER-2 / neu	PECAM-1	sVEGFR-2
HGF		

Available Human Cancer Biomarker Panel 2 Analytes

Angiopoietin-2	IGFBP-1	TGF- α
sCD40L	IL-6	TNF- α
EGF	IL-8	uPA
Endoglin	IL-18*	VEGF-A
sFASL	PAI-1	VEGF-C
HB-EGF	PLGF	VEGF-D

* IL-18 is not available as a singleplex.

Ordering Information

Catalog #	Description
-----------	-------------

Human Premixed All-in-One Kit

171AC500M	Bio-Plex Pro Human Cancer Biomarker Panel 1, 16-Plex , 1 x 96-well, includes premixed coupled magnetic beads, detection antibodies, standard, 2-level controls, detection antibody diluent, standard diluent HB, sample diluent HB, assay and wash buffers, streptavidin-PE, 96-well flat bottom plate, sealing tape, and instructions, for detection of sEGFR, FGF-basic, follistatin, G-CSF, sHER-2 / neu, HGF, sIL-6R α , leptin, osteopontin, PDGF-AB/BB, PECAM-1, prolactin, SCF, sTIE-2, sVEGFR-1, sVEGFR-2
171AC600M	Bio-Plex Pro Human Cancer Biomarker Panel 2, 18-Plex , 1 x 96-well, includes premixed coupled magnetic beads, detection antibodies, standard, 2-level controls, detection antibody diluent, standard diluent HB, sample diluent HB, assay and wash buffers, streptavidin-PE, 96-well flat bottom plate, sealing tape, and instructions, for detection of angiopoietin-2, sCD40L, EGF, endoglin, sFASL, HB-EGF, IGFBP-1, IL-6, IL-8, IL-18, PAI-1, PLGF, TGF- α , TNF- α , uPA, VEGF-A, VEGF-C, VEGF-D

Catalog #	Description	Catalog #	Description
-----------	-------------	-----------	-------------

Bio-Plex Pro Human Cancer Biomarker Panel 1 Singleplex Sets*, 1 x 96-Well (receptors, cytokines, chemokines, growth factors, and hormones)

171BC501M	sEGFR Set	171BC509M	Osteopontin Set
171BC502M	FGF-basic Set	171BC511M	PDGF-AB/BB Set
171BC503M	Follistatin Set	171BC510M	PECAM-1 Set
171BC504M	G-CSF Set	171BC512M	Prolactin Set
171BC505M	HGF Set	171BC513M	SCF Set
171BC506M	sHER-2 / neu Set	171BC514M	sTIE-2 Set
171BC507M	sIL-6Rα Set	171BC515M	sVEGFR-1 Set
171BC508M	Leptin Set	171BC516M	sVEGFR-2 Set

Standards

171DC5000	Bio-Plex Pro Human Cancer Biomarker Panel 1, 16-Plex Standards , pkg of 1 vial, lyophilized mixture of 16 standard analytes
171DC5001	Bio-Plex Pro Human Cancer Biomarker Panel 1, 16-Plex Standards , pkg of 50 lot-matched vials, lyophilized mixture of 16 standard analytes

Bio-Plex Pro Human Cancer Biomarker Panel 2 Singleplex Sets*, 1 x 96-Well (ligands, cytokines, chemokines, and growth factors)

171BC601M	Angiopoietin-2 Set	171BC611M	PAI-1 Set
171BC602M	sCD40L Set	171BC612M	PLGF Set
171BC603M	EGF Set	171BC613M	TGF-α Set
171BC604M	Endoglin Set	171BC614M	TNF-α Set
171BC605M	sFASL Set	171BC615M	uPA Set
171BC606M	HB-EGF Set	171BC616M	VEGF-A Set
171BC607M	IGFBP-1 Set	171BC617M	VEGF-C Set
171BC608M	IL-6 Set	171BC618M	VEGF-D Set
171BC609M	IL-8 Set		

Standards

171DC6000	Bio-Plex Pro Human Cancer Biomarker Panel 2, 18-Plex Standards , pkg of 1 vial, lyophilized mixture of 18 standard analytes
171DC6001	Bio-Plex Pro Human Cancer Biomarker Panel 2, 18-Plex Standards , pkg of 50 lot-matched vials, lyophilized mixture of 18 standard analytes

Reagent Kits II — for use with human cancer biomarker panels 1 and 2

171304055M	Bio-Plex Pro Reagent Kit II with Flat Bottom Plate , 1 x 96-well, includes detection antibody diluent, standard diluent HB, sample diluent HB, assay and wash buffers, streptavidin-PE, flat bottom plate, and sealing tape, for use with magnetic separation methods
------------	--

* Includes coupled magnetic beads and detection antibody. Requires the appropriate reagent kit and standards. Singleplex sets should not be mixed with others from different panels or groups.

Bio-Plex Pro™ Diabetes Assays

Diabetes Assays

The Bio-Plex Pro diabetes assays are magnetic bead-based multiplex assays designed for enhanced assay sensitivity and assay working ranges. These assays detect human, non-human primate, mouse, and rat diabetes-related biomarkers using as little as 12.5 µl of sample per well.

Key features include:

- **Increased productivity** — measure up to 10 diabetes and obesity markers, plus adiponectin and adipsin, in only 3 hours
- **Expanded multiplexability** — mix diabetes assays with a host of compatible assays from our cytokine menu
- **Option to use a magnetic wash station** — simplify assay workflow and improve data consistency between experiments
- **Flexible ordering options** — order either premixed all-in-one kits or singleplex sets, or customize your assay with the Bio-Plex assay builder (bio-rad.com/assaybuilder)



- **Robustness** — performance tested in serum and plasma matrices
- **Cross-platform compatibility** — can be used with all xMAP life science instruments supplied by any Luminex partner

For More Information

Web: bio-rad.com/bio-plexprodiabetes

Request or download bulletins: 6342 and 6119

Available Bio-Plex Pro Diabetes Assays

Human (compatible with non-human primate samples)*	Mouse	Rat
Adiponectin	Adiponectin	Ghrelin
Adipsin	Ghrelin	GLP-1
C-Peptide	GIP	Glucagon
Ghrelin	GLP-1	Leptin
GIP	Glucagon	PAI-1
GLP-1	Insulin	
Glucagon	Leptin	
Insulin	PAI-1	
Leptin	Resistin	
PAI-1		
Resistin		
Visfatin		

* See instruction manual for details.

Ordering Information

Catalog # Description

Human Premixed All-in-One Kits (compatible with non-human primate samples)

171A7001M	Bio-Plex Pro Human Diabetes 10-Plex Panel , 1 x 96-well, includes premixed coupled magnetic beads, detection antibodies, standards, assay and wash buffers, detection antibody diluent, streptavidin-PE, flat bottom plate, sealing tape, standard and sample diluents for the detection of C-Peptide, ghrelin, GIP, GLP-1, glucagon, insulin, leptin, PAI-1, resistin, and visfatin
171A7002M	Bio-Plex Pro Human Diabetes Adipsin and Adiponectin Assays , 1 x 96-well, includes coupled magnetic beads, detection antibodies, standards, assay and wash buffers, detection antibody diluent, streptavidin-PE, flat bottom plate, sealing tape, serum-based diluent for the detection of adipsin and adiponectin
171A7003M	Bio-Plex Pro Human Diabetes Adiponectin Assay , 1 x 96-well, includes coupled magnetic beads, detection antibodies, standards, assay and wash buffers, detection antibody diluent, streptavidin-PE, flat bottom plate, sealing tape, serum-based diluent for the detection of adiponectin
171A7004M	Bio-Plex Pro Human Diabetes Adipsin Assay , 1 x 96-well, includes coupled magnetic beads, detection antibodies, standards, assay and wash buffers, detection antibody diluent, streptavidin-PE, flat bottom plate, sealing tape, serum-based diluent for the detection of adipsin

Catalog # Description Catalog # Description

Bio-Plex Pro Human Diabetes Singleplex Sets*, 1 x 96-Well

171B7003M	C-Peptide Set	171B7008M	Insulin Set
171B7004M	Ghrelin Set	171B7009M	Leptin Set
171B7005M	GIP Set	171B7010M	PAI-1 Set
171B7006M	GLP-1 Set	171B7011M	Resistin Set
171B7007M	Glucagon Set	171B7012M	Visfatin Set

Standards

171D70001	Bio-Plex Pro Human Diabetes Standards , pkg of 1 vial, lyophilized mixture of 12 analytes
171D70050	Bio-Plex Pro Human Diabetes Standards , pkg of 50 lot-matched vials, lyophilized mixture of 12 analytes

Mouse Premixed All-in-One Kits

171F7001M	Bio-Plex Pro Mouse Diabetes 8-Plex Panel , 1 x 96-well, includes coupled magnetic beads, detection antibodies, standards, assay and wash buffers, detection antibody diluent, streptavidin-PE, filter plate, flat bottom plate, sealing tape, standard and sample diluents for the detection of ghrelin, GIP, GLP-1, glucagon, insulin, leptin, PAI-1, and resistin
171F7002M	Bio-Plex Pro Mouse Diabetes Adiponectin Assay , 1 x 96-well, includes coupled magnetic beads, detection antibodies, standards, assay and wash buffers, detection antibody diluent, streptavidin-PE, filter plate, flat bottom plate, sealing tape, serum-based diluent for the detection of adiponectin

* Includes coupled magnetic beads and detection antibody. Requires the appropriate reagent kit and standards. Singleplex sets should not be mixed with others from different panels or groups.

continues

Ordering Information

Catalog #	Description	Catalog #	Description
Bio-Plex Pro Mouse Diabetes Singleplex Sets*, 1 x 96-Well			
171G7002M	Ghrelin Set	171G7006M	Insulin Set
171G7003M	GIP Set	171G7007M	Leptin Set
171G7004M	GLP-1 Set	171G7008M	PAI-1 Set
171G7005M	Glucagon Set	171G7009M	Resistin Set

Standards

171I70001	Bio-Plex Pro Mouse Diabetes Standards , pkg of 1 vial, lyophilized mixture of 9 standard analytes, includes adiponectin, ghrelin, GIP, GLP-1, glucagon, insulin, leptin, PAI-1, and resistin
171I70050	Bio-Plex Pro Mouse Diabetes Standards , pkg of 50 lot-matched vials, lyophilized mixture of 9 standard analytes, includes adiponectin, ghrelin, GIP, GLP-1, glucagon, insulin, leptin, PAI-1, and resistin

Bio-Plex Pro Rat Diabetes Singleplex Sets*, 1 x 96-Well

171L7001M	Ghrelin Set	171L7006M	Leptin Set
171L7003M	GLP-1 Set	171L7007M	PAI-1 Set
171L7004M	Glucagon Set		

Standards

171NZ0001	Bio-Plex Pro Rat Standards , pkg of 1 vial, lyophilized mixture of 31 standard analytes. Compatible with rat cytokine and rat diabetes assays
171NZ0501	Bio-Plex Pro Rat Standards , pkg of 50 lot-matched vials, lyophilized mixture of 31 standard analytes. Compatible with rat cytokine and rat diabetes assays

Reagent Kit — for use with diabetes singleplex sets

171304070M	Bio-Plex Pro Reagent Kit with Flat Bottom Plate , 1 x 96-well, includes flat bottom plate, assay and wash buffers, detection antibody diluent, streptavidin-PE, sealing tape, standard and sample diluents, and instructions, for use with magnetic separation methods
------------	---

* Includes coupled magnetic beads and detection antibody. Requires the appropriate reagent kit and standards. Singleplex sets should not be mixed with others from different panels or groups.

Bio-Plex Pro™ Human Isotyping Assays

Human Isotyping Assays

Bio-Plex Pro human isotyping assays are magnetic bead-based multiplex immunoassays offering accurate and reproducible measurements of multiple analytes simultaneously. These assays have been developed to provide reliable performance with the flexibility required to meet your research needs. They incorporate several features to enhance both quality and ease of use.

- **Magnetic beads** — simplified plate processing and improved reproducibility
- **Convenience** — all-in-one kit format for both multiplex and singleplex assays

Available Assays

IgG ₁	IgA
IgG ₂	IgM
IgG ₃	IgE
IgG ₄	IgG Total

- **1-level quality control**
- **Optimization** — one diluent optimized for use with samples, standards, and controls
- **Assay quick guide** — to get you started right away

For More Information

Web: bio-rad.com/isotyping
Request or download bulletin: 6344

Ordering Information

Catalog #	Description
-----------	-------------

Bio-Plex Pro Human Isotyping Panel Premixed All-in-One Multiplex Kit

171A3100M	Bio-Plex Pro Human Isotyping Panel, 6-plex , 1 x 96-well, includes coupled magnetic beads, detection antibodies, standards, 1-level quality controls, detection antibody diluent, isotyping diluent (for use with samples, standards, and controls), assay buffer, wash buffer, streptavidin-PE, 96-well flat bottom plate, sealing tape, assay quick guide, and product data sheet, for detection of IgG ₁ , IgG ₂ , IgG ₃ , IgG ₄ , IgA, and IgM
-----------	---

Bio-Plex Pro Human Isotyping All-in-One Singleplex Kits*

171A3101M	IgA Kit , 1 x 96-well
171A3104M	IgM Kit , 1 x 96-well
171A3102M	IgE Kit , 1 x 96-well
171A3103M	IgG Total Kit , 1 x 96-well

* Singleplex kits are specific for each assay indicated and include coupled magnetic beads, detection antibodies, standards, 1-level quality controls, detection antibody diluent, isotyping diluent (for use with samples, standards, and controls), assay buffer, wash buffer, streptavidin-PE, 96-well flat bottom plate, sealing tape, assay quick guide, and product data sheet.

Bio-Plex Pro™ Human Acute Phase Assay Panel

Human Acute Phase Assay Panel

Inflammation in response to tissue injury, infection, sepsis, cardiovascular disease, and diabetes typically involves the production and release of multiple acute phase proteins from the liver. The Bio-Plex Pro human acute phase assay panels deliver accurate and reproducible measurement of nine of the most commonly measured acute phase biomarkers in just 3 hours with as little as 13 µl of sample. Bio-Plex Pro human acute phase assay features include:

- **Bio-Plex Pro human acute phase 5-plex assay panel** — includes ferritin, fibrinogen, procalcitonin, serum amyloid A, and tissue plasminogen activator
- **Bio-Plex Pro human acute phase 4-plex assay panel** — includes α-2-macroglobulin, CRP, haptoglobin, and serum amyloid P
- Validated in serum, plasma, and culture supernatant

Available Bio-Plex Pro Human Acute Phase Assays

α-2-macroglobulin	Procalcitonin
CRP	SAA
Ferritin	SAP
Fibrinogen	Tissue plasminogen activator
Haptoglobin	

- Compatible with the Bio-Plex® 200 system and all Luminex 100- and 200-based readers (uses 25 bead map)

For optimal performance, the acute phase panel exists as separate 5-plex and 4-plex assays with distinct sample dilution requirements.

For More Information

Web: bio-rad.com/bio-plexproacutephase

Request or download bulletin: 5650

Ordering Information

Catalog #	Description
-----------	-------------

Complete Kits*

171A4S07M	Bio-Plex Pro Human Acute Phase 5- + 4-Plex Panel Complete Kit , 1 x 96-well
171A4C09M	Bio-Plex Pro Human Acute Phase 4-Plex Panel Complete Kit , 1 x 96-well
171A4C07M	Bio-Plex Pro Human Acute Phase 5-Plex Panel Complete Kit , 1 x 96-well

* Kits are specific for each assay indicated and include coupled magnetic beads, detection antibodies, standards, 1-level quality controls, detection antibody diluent, isotyping diluent (for use with samples, standards, and controls), assay buffer, wash buffer, streptavidin-PE, 96-well flat bottom plate, sealing tape, assay quick guide, and product data sheet.

continues

Ordering Information

Catalog #	Description
Assay Kits*	
171A4007M	Bio-Plex Pro Human Acute Phase 5-Plex Panel , 1 x 96-well, includes premixed coupled magnetic beads, detection antibodies, standards, and controls for the detection of ferritin, fibrinogen, procalcitonin, serum amyloid A, tissue plasminogen activator; requires acute phase reagent kit and acute phase diluent kit
171A4008M	Bio-Plex Pro Human Acute Phase 5-Plex Panel , 10 x 96-well, requires 10 acute phase reagent kits and 10 acute phase diluent kits
171A4009M	Bio-Plex Pro Human Acute Phase 4-Plex Panel , 1 x 96-well, includes premixed coupled magnetic beads, detection antibodies, standards, and controls for the detection of α -2-macroglobulin, CRP, haptoglobin, serum amyloid P; requires acute phase reagent kit and acute phase diluent kit
171A4010M	Bio-Plex Pro Human Acute Phase 4-Plex Panel , 10 x 96-well, requires 10 acute phase reagent kits and 10 acute phase diluent kits
Standards	
171D40002	Bio-Plex Pro Human Acute Phase Standards , pkg of 2 vials, lyophilized mixture of 9 standard antigens
171D40006	Bio-Plex Pro Human Acute Phase Standards , pkg of 50 lot-matched vials, lyophilized mixture of 9 standard antigens
Reagent Kit	
171304050	Bio-Plex Pro Human Acute Phase Reagent Kit , 1 x 96-well, includes assay buffer, wash buffer, detection antibody diluent, streptavidin-PE, filter plate, sealing tape
Diluent Kit**	
171305050	Bio-Plex Pro Human Acute Phase Diluent Kit , 1 x 96-well, includes 10 ml serum-based diluent and 300 ml serum-free diluent

* One acute phase reagent kit is required for use with each assay kit.
 ** One acute phase diluent kit is sufficient to perform one 5-plex and one 4-plex assay.

Bio-Plex® COOH Beads and Related Reagents

Bio-Plex Pro™ Magnetic COOH Beads

Carboxylated beads that enable you to build your own magnetic assays for use with either magnetic- or vacuum-based separation protocols during assay preparation. The magnetic beads are available in 20 bead regions in 1 ml vials for immediate delivery (4 ml vials are available with a 30-day lead time). The Bio-Plex® amine coupling kit provides a complete set of reagents for coupling proteins to the beads. For nucleic acid coupling, refer to the instruction manual.

- Suitable for protein and nucleic acid multiplex assays
- Compatible with all Luminex xMAP readers, both Bio-Plex Pro and Bio-Plex Pro II wash stations, and Bio-Plex handheld magnetic washers



For More Information
 Web: bio-rad.com/COOH

Ordering Information

Catalog #	Description
MC100xx01*	Bio-Plex Pro Magnetic COOH Beads , 1 ml
MC100xx04*	Bio-Plex Pro Magnetic COOH Beads , 4 ml

*xx = bead region. Bead regions available: 26–29, 34–37, 43–46, 52–55, and 62–65.

Bio-Plex® Nonmagnetic COOH Beads

Develop your own Bio-Plex suspension array assays using these beads. The beads are internally labeled with two fluorescent dyes. Use the Bio-Plex amine coupling kit to attach nucleic acids, antibodies, or other proteins to polystyrene beads for multianalyte analysis of any sample in a 96-well format.

- **Flexible assays** — quickly add or remove analytes from your menu
- **Ready-to-use reagent kits** — optimized for Bio-Plex COOH beads
- **Complete solution** — one-stop source for all your assay needs
- **Compatibility** — works with 200 and 3D xMAP readers



For More Information
Web: bio-rad.com/COOH

Ordering Information

Catalog #	Description
1715060xx*	Bio-Plex Nonmagnetic COOH Beads , 1.25 x 10 ⁷ beads/ml, 1 ml
1716060xx*	Bio-Plex Nonmagnetic COOH Beads , 16 ml

*xx = bead region. Bead regions available, 11, 16, 18, 20, 24–28, 30, 31, 33, 35, 38, 42–46, 50–53, 56, and 66.

Bio-Plex® Amine Coupling Kit

This kit was developed specifically for immobilizing antibodies or other proteins on Bio-Plex nonmagnetic COOH beads.

- Sufficient reagents for 30 coupling reactions using 100 µl of Bio-Plex COOH beads
- Each coupling reaction supports the analysis of 200 samples
- Tested on proteins from 6–150 kD
- For use with antibodies or other proteins



For More Information
Web: bio-rad.com/COOH

Ordering Information

Catalog #	Description
171406001*	Bio-Plex Amine Coupling Kit , 30 reactions, includes bead wash buffer, bead activation buffer, storage buffer, staining buffer, coupling reaction tubes

Bio-Plex Streptavidin-PE**
171304501 **Bio-Plex Streptavidin-PE**, streptavidin-phycoerythrin for 10 x 96-well reactions

* For protein coupling only.

** Streptavidin-PE is a component of all reagent kits and is available separately.

Subject Index

Apoptosis Assays, 317
Bio-Plex® 3D Multiplex System, 300
Bio-Plex® 200 System, 299
Bio-Plex® Amine Coupling Kit , 326
Bio-Plex Data Pro™ Software, 304
Bio-Plex® MAGPIX™ Multiplex Reader Accessories and Software, 301
Bio-Plex Manager™ Software Conversions and Upgrades, 303
Bio-Plex Manager™ Software, Security Edition, 304
Bio-Plex Manager™ Software, Standard Edition, 302
Bio-Plex® Nonmagnetic COOH Beads, 326
Bio-Plex Pro™ Human Inflammation Assays, 307
Bio-Plex Pro™ Human MMP and TIMP Assays, 305
Bio-Plex Pro™ Magnetic COOH Beads, 325
Bio-Plex Pro™ RBM Human Metabolic and Hormone Panels, 306
Bio-Plex Pro™ Washing Accessories, 301
Cell Signaling Assays, 315
Diabetes Assays, 321
Human Acute Phase Assay Panel, 324
Human Assays, 309
Human Cancer Biomarker Panels, 319
Human Isotyping Assays, 323
Kidney Toxicity Assays, 318
Mouse Assays, 312
Multi-Species TGF- β Assays, 315
Rat Assays, 314

