

Naphthalenes (Substituted)

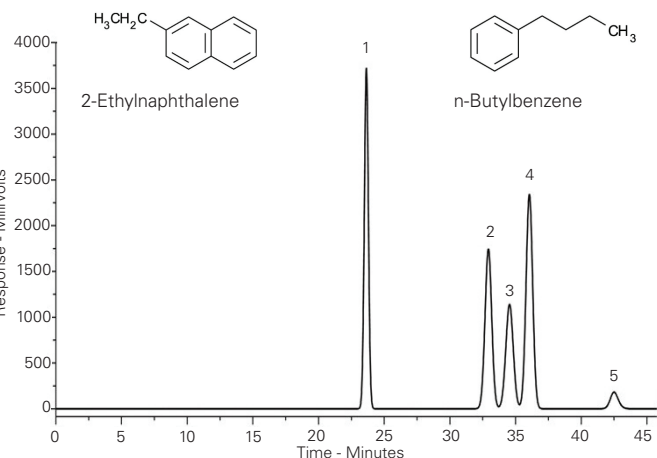
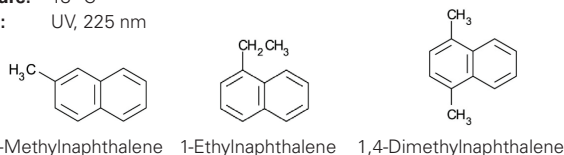
Application #AN3690

Conditions

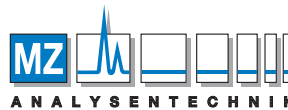
Column: ACE 5 C18
Dimensions: 250 x 4.6 mm
Part Number: ACE-121-2546
Mobile Phase: MeCN/H₂O (51:49 v/v)
Flow Rate: 1.5 mL/min
Temperature: 18 °C
Detection: UV, 225 nm

Analytes

- 2-Methylnaphthalene
- 1-Ethynaphthalene
- 1,4-Dimethylnaphthalene
- 2-Ethynaphthalene
- n-Butylbenzene



Reproduced with permission of Department of Environmental Chemistry, University of Glasgow, UK



AUTHORIZED DISTRIBUTOR

MZ-Analysentechnik GmbH
 Barcelona-Allee 17 • D-55129 Mainz
 Tel +49 6131 880 96-0
 Fax +49 6131 880 96-20
 e-mail: info@mz-at.de
 www.mz-at.de

ACE columns are available in an extensive range of phases, particle sizes and dimensions

visit: www.ace-hplc.com
 or
 email: info@ace-hplc.com

Neonicotinoids in Honey by LC-MS/MS

Application #AN4050

Conditions

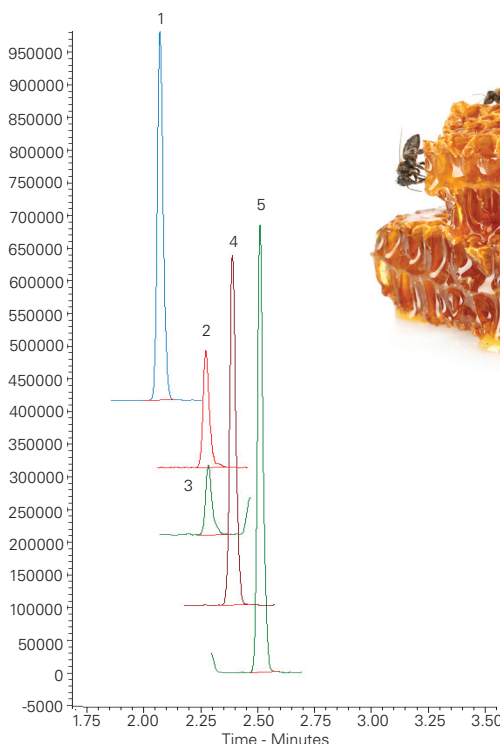
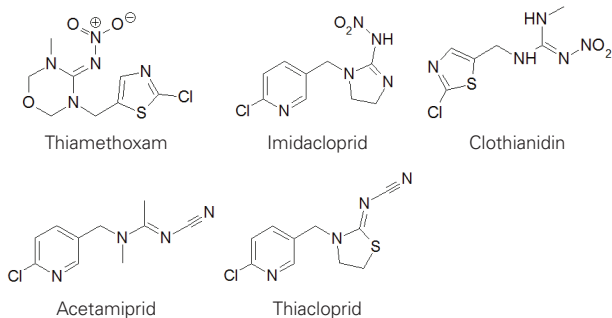
Column: ACE UltraCore 2.5 SuperC18
Dimensions: 100 x 2.1 mm
Part Number: CORE-25A-1002U
Mobile Phase: A: 0.05% ammonia in H₂O
 B: 0.05% ammonia in MeOH
Gradient:

Time (mins)	%B
0	5
3	100

Flow Rate: 0.6 mL/min
Injection: 1 µL (POISe mode)
Temperature: 30 °C
Detection: Shimadzu LCMS-8060
 Positive ion mode HESI
Sample: Honey spiked at 0.1 ppb (QuEChERS extract)

Analytes

- Thiamethoxam (*m/z* 292 → 211)
- Imidacloprid (*m/z* 256 → 175)
- Clothianidin (*m/z* 250 → 169)
- Acetamiprid (*m/z* 223 → 126)
- Thiacloprid (*m/z* 253 → 126)



Reproduced with permission of Shimadzu, France