

# Ghost-Guard-LC

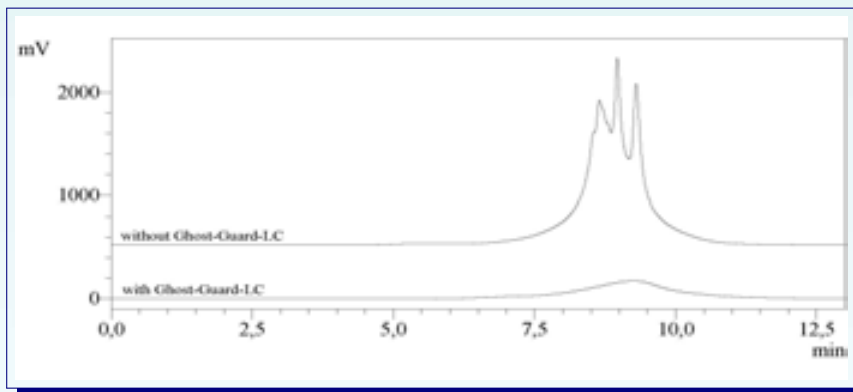
## Online/Inline Mobile Phase Cleaner for Reversed-Phase Gradient HPLC

In gradient elution analysis using a reversed-phase HPLC system, impurities from the mobile phase solvents (mobile phase containers, flow lines, pump, gradient mixer etc.) can cause peaks to appear in chromatograms. If such ghost peaks appear, it can be difficult to distinguish them from peaks corresponding to trace sample components, reducing analysis reliability.

The Ghost-Guard-LC is an mobile phase cleaning column for gradient elution in reversed phase HPLC. Traces of impurities in the mobile phase are removed by the Ghost-Guard-LC and the appearance of ghost peaks is suppressed.

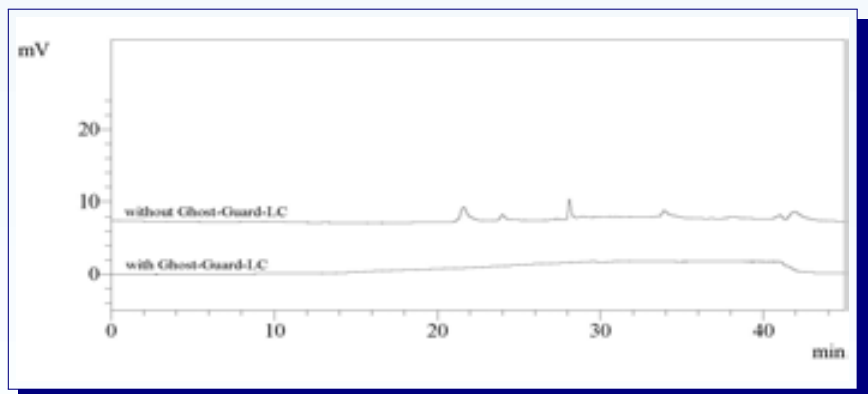


### Chromatograms of Blank Runs (with/without Ghost-Guard-LC)



Analytical Column	Platinum C18/C18 EPS; length: 33 mm, ID: 7 mm; 1.5 $\mu$ m
Mobile Phase A	mixture of 950 ml water, 50 ml methanol and 0.1 ml acetone
Mobile Phase B	methanol
Detection	UV: 220nm
Gradient	Min % A % B
	0 100 0
	2 100 0
	7 10 90
	8 100 0
13 100 0	

Analytical Column	Reprosil-Gold 120 C18; length: 125 mm, ID: 4.6 mm; 3 $\mu$ m
Mobile Phase A	0.5 M $\text{KH}_2\text{PO}_4$ in water pH 4.5
Mobile Phase B	methanol
Detection	UV: 273nm
Gradient	Min % A % B
	0 min 85 15
	5 min 85 15
	29 min 30 70
	39 min 30 70
40 min 85 15	
50 min 85 15	



For more applications see: <http://analyte.de>

ANALYTE Analytical Support  
Leonhardshof 71  
D-64760 Oberzent - Germany  
VAT ID: DE313774795

Phone: 0049-(0)6068-7599042  
Fax: 0049-(0)6068-7599043  
info@analyte.de  
www.analyte.de

# Ghost-Guard-LC

- The Ghost-Guard-LC is easy to install
- Cost-efficient and effective way for elimination of ghost peaks
- Compatible with common HPLC equipment
- Compatible with aqueous buffers and organic solvents

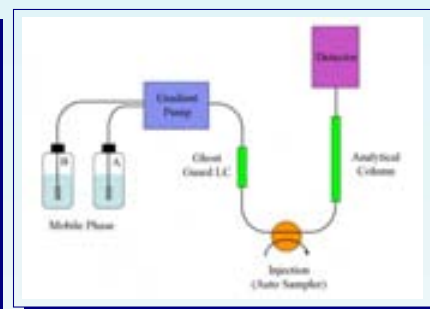
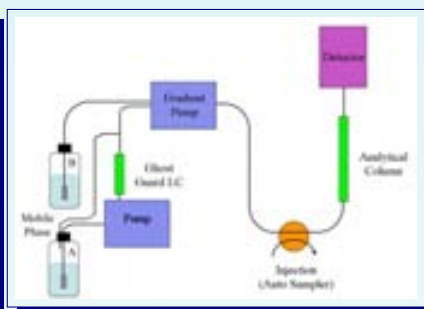
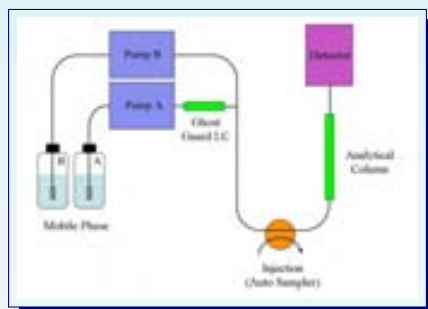
## Installation

Installation of the Ghost-Guard-LC is very easy and it is compatible to common HPLC equipment:

Installation  
high-pressure gradient pump

”Online”-Installation  
low-pressure gradient pump

”Inline”-Installation  
low-pressure gradient pump



A = aqueous mobile phase (e. g. phosphate buffer), B = organic mobile phase (e. g. methanol)

## Ordering Information

<i>Art. No.</i>	<i>Article</i>
ANP00001	Ghost-Guard-LC - 4.6 mm internal diameter and 30 mm length
ANP00008	Ghost-Guard-LC - 4.6 mm internal diameter and 50 mm length

- \* Each Ghost-Guard-LC passes our Quality Control and is shipped with a batch related certificate of analysis
- \* The Ghost-Guard-LC service life differs according to analysis conditions, mobile phase and its purity
- \* When the Ghost-Guard-LC is installed in the ”Inline”-Installation mode on a low-pressure gradient pump the Dwell volume is increased according to the internal volume of the product
- \* Nonpolar reagents (like ion pair reagents) in the mobile phase may be retained by the Ghost-Guard-LC. This will influence retention times and peak shapes
- \* The Ghost-Guard-LC removes nonpolar impurities in the mobile phase and hence a significant reduction in the presence of ghost peaks can be expected. System peaks caused by other factors can not be removed

ANALYTE Analytical Support  
Leonhardshof 71  
D-64760 Oberzent - Germany  
VAT ID: DE313774795

Phone: 0049-(0)6068-7599042  
Fax: 0049-(0)6068-7599043  
info@analyte.de  
www.analyte.de