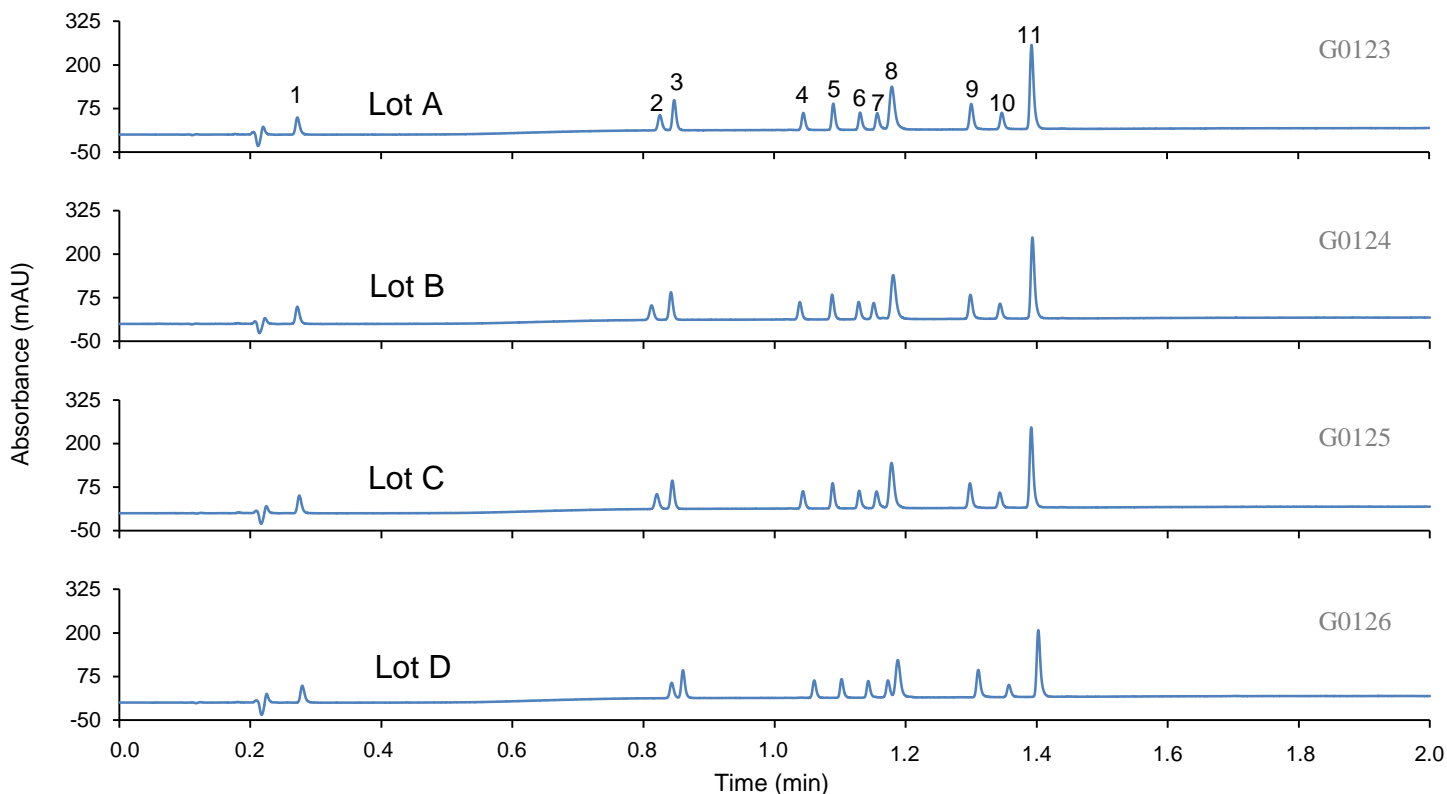


Application Note: 138-PE

HALO 2 Peptide ES-C18 Lot Reproducibility



TEST CONDITIONS:

Columns:

3.0 x 50 mm, HALO 2 Peptide ES-C18, 2 µm
Part Number: 91123-402

Mobile Phase:

A = 0.1% Trifluoroacetic acid in water
B = 0.1% Trifluoroacetic acid in 80/20 acetonitrile/water
Flow Rate: 1.1 mL/min.
Gradient: Hold at 12.5% B for 0.1 min;
12.5% B to 93% B from 0.1 - 2.0 min.
Initial pressure: 278 bar
Temperature: 60 °C
Detection: UV 215 nm, PDA
Injection Volume: 0.5 µL
Sample Solvent: mobile phase A
Response Time: 0.025 sec.
Data Rate: 200 Hz
LC System: Shimadzu Nexera X2
Flow Cell: 1 µL

PEAK IDENTITIES:

1. Gly-Tyr
2. Val-Tyr-Val
3. Angiotensin 1/2 (1-7) amide
4. Met-enkephalin
5. Angiotensin 1/2 (1-8) amide
6. Angiotensin II
7. Leu-enkephalin
8. Ribonuclease A
9. Angiotensin (1-12) (mouse)
10. Bovine Insulin
11. Angiotensin (1-12) (human)

MW
(g/mol)

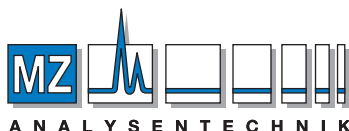
%RSD
(retention times)

238	1.21
380	1.59
898	0.95
574	0.92
1045	0.60
1046	0.61
556	0.82
13,700	0.35
1573	0.46
5733	0.49
1509	0.36

The lot-to-lot reproducibility of HALO 2 Peptide ES-C18 is maintained by tightly controlled manufacturing practices and quality assurance testing. This ensures the reliability of the product over its lifetime.



www.advanced-materials-tech.com



AUTHORIZED DISTRIBUTOR

MZ-Analysentechnik GmbH, Barcelona-Allee 17 • D-55129 Mainz
Tel +49 6131 880 96-0, Fax +49 6131 880 96-20
e-mail: info@mz-at.de, www.mz-at.de