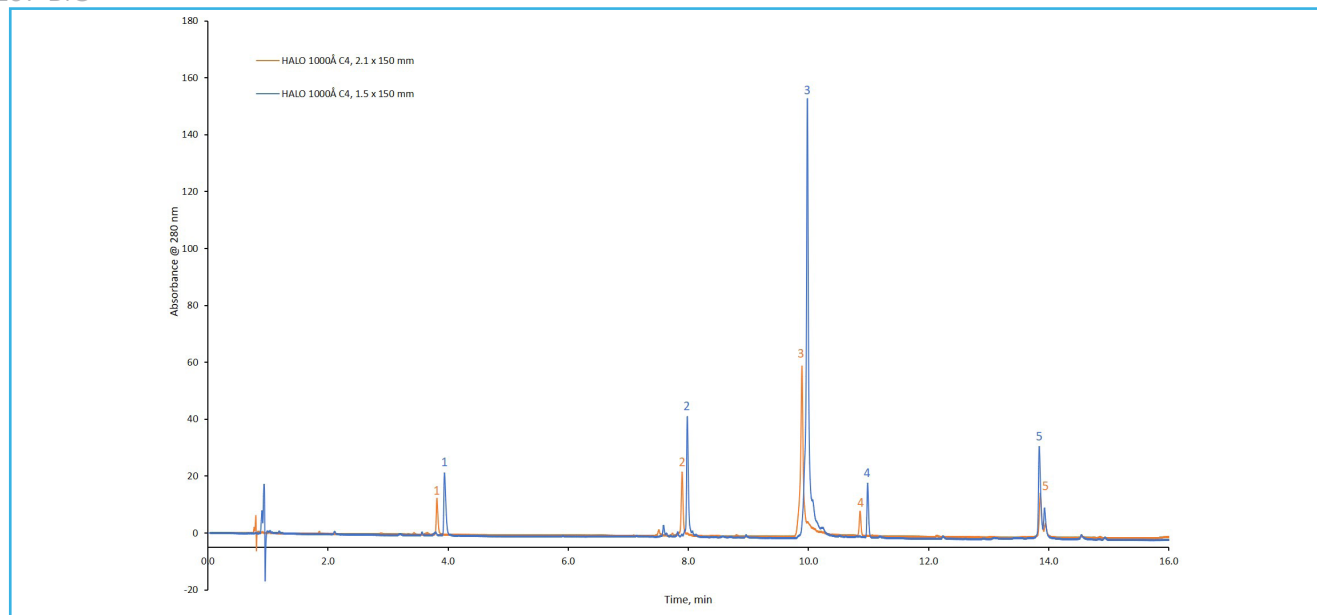




Sensitivity Increase of Mixed Proteins Through the Use of a 1.5 mm ID column

289-BIO



TEST CONDITIONS:

Column: HALO 1000 Å C4, 2.7 µm, 1.5 x 150 mm

Part Number: 9271X-714

Column: HALO 1000 Å C4, 2.7 µm, 2.1 x 150 mm

Mobile Phase A: Water/ 0.1% TFA

Mobile Phase B: 80/20 ACN/Water / 0.1% TFA

Gradient:	Time (min)	%B
	0.00	24
	15.00	57
	16.00	100
	17.00	100
	18.00	24

Flow Rate: 0.2 mL/min for 1.5 mm
0.4 mL/min for 2.1 mm

Pressure: 228 bar/1.5 mm
264 bar/2.1 mm

Temperature: 80 °C

Detection: UV 280 nm, PDA

Injection Volume: 2.0 µL

Sample Solvent: Water

Data Rate: 40 Hz

Response Time: 0.050 sec.

Flow Cell: 1µL

Instrument: Shimadzu Nexera X2

PEAK IDENTITIES

1. Ribonuclease A
2. Lysozyme
3. SiluLite Sigma mAb
4. Alpha-lactalbumin
5. Enolase

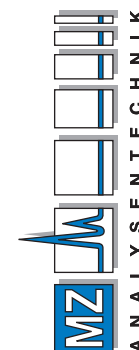
A mix of proteins was separated using a HALO 1000 Å C4 column. The switch from a 2.1 mm to a 1.5 mm ID column gives a significant overall increase in sensitivity while maintaining similar test conditions. Optimization of the post-column tubing reduced the extra column volumes for this experiment. The 1.5 mm ID column can deliver an increase in sensitivity for separations without the investment of a specialized micro flow HPLC system.

AUTHORIZED DISTRIBUTOR

MZ-Analyse-technik GmbH, Barcelona-Allee 17 • D-55129 Mainz

Tel +49 6131 880 96-0, Fax +49 6131 880 96-20

e-mail: info@mz-at.de, www.mz-at.de



AMT_AN_Rev_0

