

Friendly User Interface

- ◆ Real-time display the current status of each channel
- ◆ Batch method editor
- ◆ 200 Methods can be stored

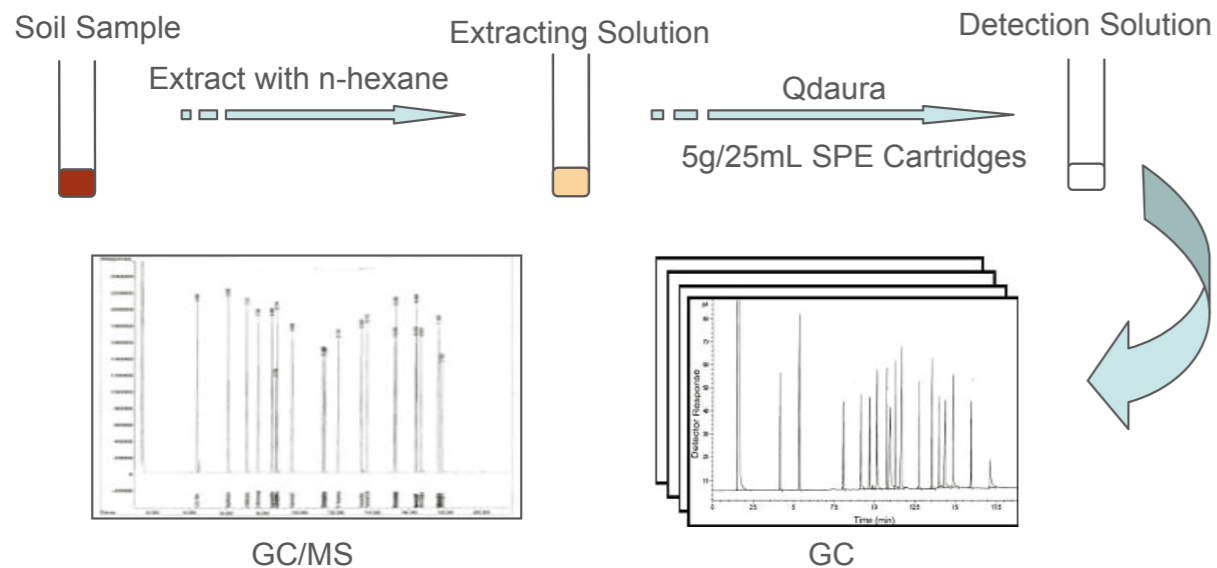


Example Application

- ◆ Extractable Petroleum Hydrocarbons in Soil

No	Sample	Recovery (%)	
		Fraction 1: n-hexane	Fraction 2: dichloromethane
①	100 ppm - 2 Fluorobiphenyl	0	100
②	100 ppm - 2-Bromonaphthalene	2	98
③	50 ppm - C9-C40	98-100	0-2
④	50 ppm - 1-Chlorine octadecane	100	0

- ◆ Solution for Qdaura



Bonna-Agela Technologies

Bonna-Agela Technologies US
2038A Telegraph Rd. Wilmington, DE
19808, USA
Tel: (302) 438 8798
Fax: (302) 636 9339
E-mail: info@bonnaagela.com

Bonna-Agela India
G#212, 2nd Floor, Sector-63, Noida, Uttar Pradesh
Tel: 0120-4225466-71
Fax: 0120-4225465
E-mail: sales@bonnaagela.com

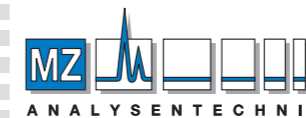
Bonna-Agela China
179 South Street, Teda West Zone,
Tianjin 300462, China
Tel: +86 (22) 25321032/7023
Fax: +86 (22) 25321033
E-mail: service@agela.com.cn



BONNA-AGELA TECHNOLOGIES Qdaura™ Automated SPE Workstation

The Qdaura™ Automated SPE workstation is a 4-channel parallel system specifically designed for high throughput samples processing. It is a powerful system, automating routine SPE procedures from conditioning, sample loading, washing, elution to collection.

The built-in program facilitates rinse step during extraction to eliminate cross-contamination. Each thread of the 4-parallel channel can handle 6 samples in a given method that 24 samples in total can be prepared in a single run. It is an indispensable tool for applications in the area of agricultural and food chemistry, environmental monitoring, clinical testing and forensic analysis.



AUTHORIZED DISTRIBUTOR

MZ-Analysentechnik GmbH
Barcelona-Allee 17 • D-55129 Mainz
Tel +49 6131 880 96-0
Fax +49 6131 880 96-20
e-mail: info@mz-at.de
www.mz-at.de

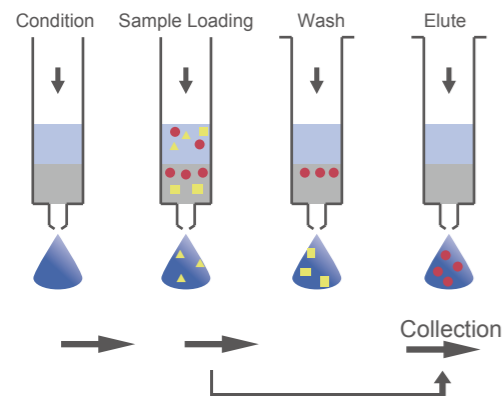
Website: www.bonnaagela.com
E-mail: info@bonnaagela.com

Best Value
Guaranteed Product Quality
Innovation to Benefit Customers

Features of Qdaura™

- ◆ 4 Channels in parallel
- ◆ 6 samples per channel
- ◆ Touch screen PC
- ◆ Designed for bench top application
- ◆ High precision and reproducibility
- ◆ Zero cross-contamination
- ◆ Eliminate human error
- ◆ High throughput

Working Procedure

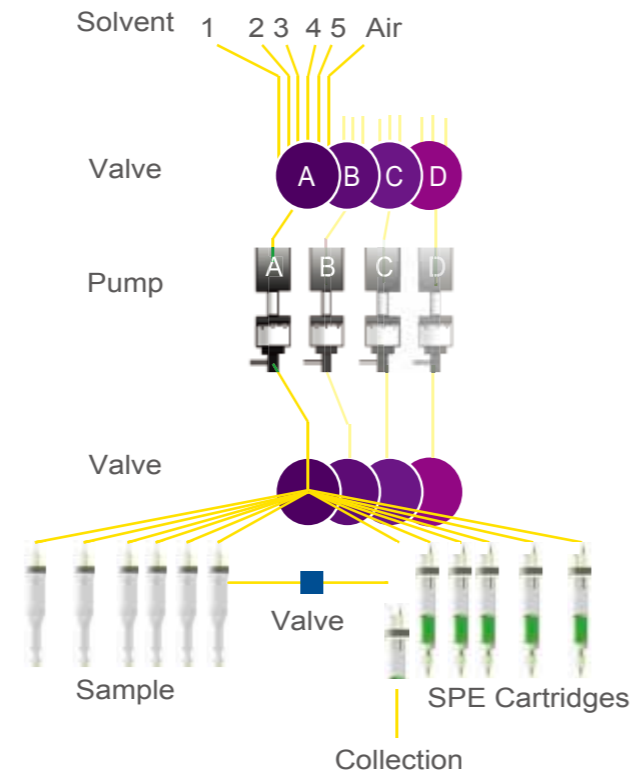


About SPE

Solid-phase extraction(SPE) is a separation process by which compounds of interest that are dissolved or suspended in a liquid phase are separated from other compounds according to their difference of interactions with a solid phase. SPE cartridge is a miniature version of a liquid chromatography column. It can be used to pre-isolate or cleanup samples from a wide matrix including urine, blood, water, beverages, soil and animal tissue. Automated SPE workstation such as Qdaura™ significantly expedites the extraction process to increase workflow.

Specifications

Item	Qdaura
Sample Capacity	24
Channel	4
Solvent	5
Sample Loading	0-30 mL
Flow Rate	0.1-30 mL/min
Pump	Valveless metering pump
Collection	2
Software	Integration Design



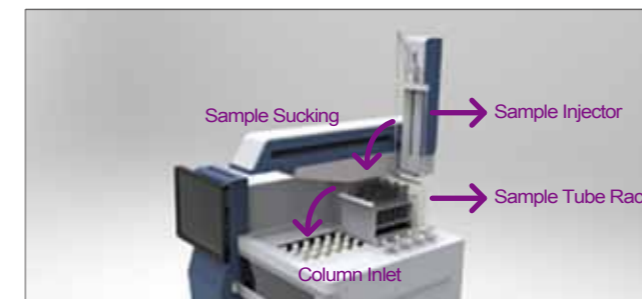
High Precision Switching Valve for Fluid Positioning

- ◆ Electrically activated
- ◆ Zero void
- ◆ Inert contact surface
- ◆ Long Lifetime



Automated Sampling

- ◆ **Zero Contamination**
 - 4 injection needles for 4 channels
 - Effective cleaning for inside or/and outside of the injectors
- ◆ **Large Injection Volume**
 - Single sampling up to 9mL
- ◆ **Time Saving**
 - Greatly cut down the sampling time in traditional manual process
- ◆ **Good Compatibility**
 - Compatible with sample rack in different specifications



Improved performance with position sensing technology

- ◆ **Intelligence and reliable**
 - No occurrence of dried cartridge with online monitoring
- ◆ **Zero Contamination**
 - One sensor needles for one cartridge
- ◆ **Assured accuracy of liquid-handling**
 - Liquid volume is accurately controlled
- ◆ **Good Compatibility**
 - Adjustable needle for cartridges from different vendors
- ◆ **Free Your Time**
 - Just start the system and walk away

